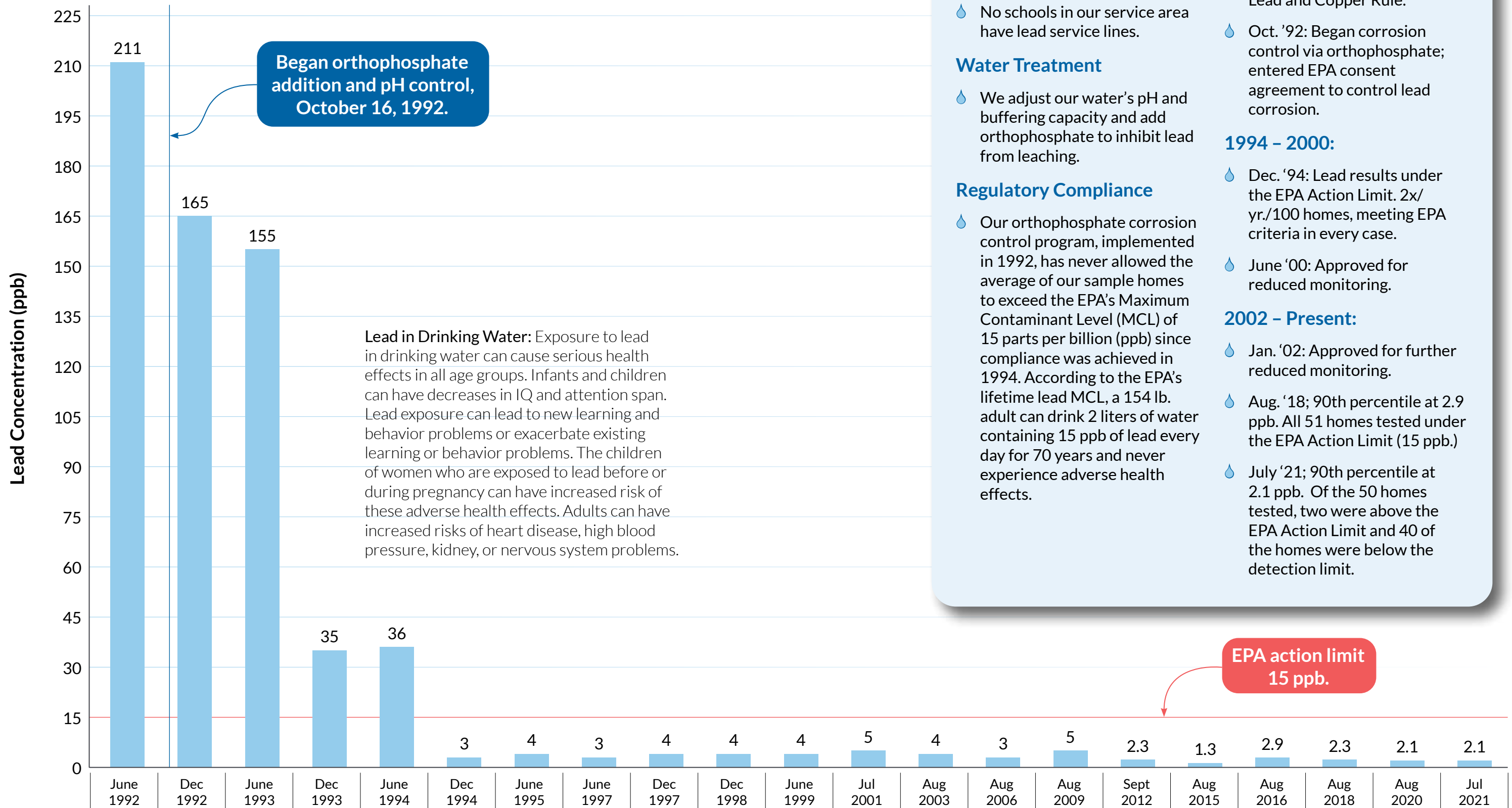


# Lead

## Tier I Lead Values (90th percentile)



### Our Water

- There is no lead in our treated water leaving the plant.
- No schools in our service area have lead service lines.

### Water Treatment

- We adjust our water's pH and buffering capacity and add orthophosphate to inhibit lead from leaching.

### Regulatory Compliance

- Our orthophosphate corrosion control program, implemented in 1992, has never allowed the average of our sample homes to exceed the EPA's Maximum Contaminant Level (MCL) of 15 parts per billion (ppb) since compliance was achieved in 1994. According to the EPA's lifetime lead MCL, a 154 lb. adult can drink 2 liters of water containing 15 ppb of lead every day for 70 years and never experience adverse health effects.

### 1992 - 1994:

- June '92: Reported highest lead levels in US under the new Lead and Copper Rule.
- Oct. '92: Began corrosion control via orthophosphate; entered EPA consent agreement to control lead corrosion.

### 1994 - 2000:

- Dec. '94: Lead results under the EPA Action Limit. 2x/yr./100 homes, meeting EPA criteria in every case.
- June '00: Approved for reduced monitoring.

### 2002 - Present:

- Jan. '02: Approved for further reduced monitoring.
- Aug. '18: 90th percentile at 2.9 ppb. All 51 homes tested under the EPA Action Limit (15 ppb.)
- July '21: 90th percentile at 2.1 ppb. Of the 50 homes tested, two were above the EPA Action Limit and 40 of the homes were below the detection limit.