
Town of Sullivan's Island Historic Resources Survey





NEW SOUTH ASSOCIATES

PROVIDING PERSPECTIVES ON THE PAST

Who we are:

- Established in 1988
- Headquartered in Stone Mountain, Georgia
- Branch office in Columbia, South Carolina for over 30 years
- Women-owned small business
- Extensive experience with city- and countywide surveys in South Carolina and throughout the Southeast



What We Do:

Architectural history

Context development

Archaeology

Preservation planning

Geophysical studies



What is a Historic Architectural Resources Survey?

As per the *Survey Manual for South Carolina Statewide Survey of Historic Properties*, a historic resources survey is:

"the process of systematically identifying historic properties within the boundaries of a specific geographical area, documenting their location and physical characteristics, and evaluating their importance within an appropriate historical context."

"a multi-part process that consists of designing the survey's goals and parameters, conducting research about the survey area, completing fieldwork, data entry and organization, and reporting the findings of the survey."

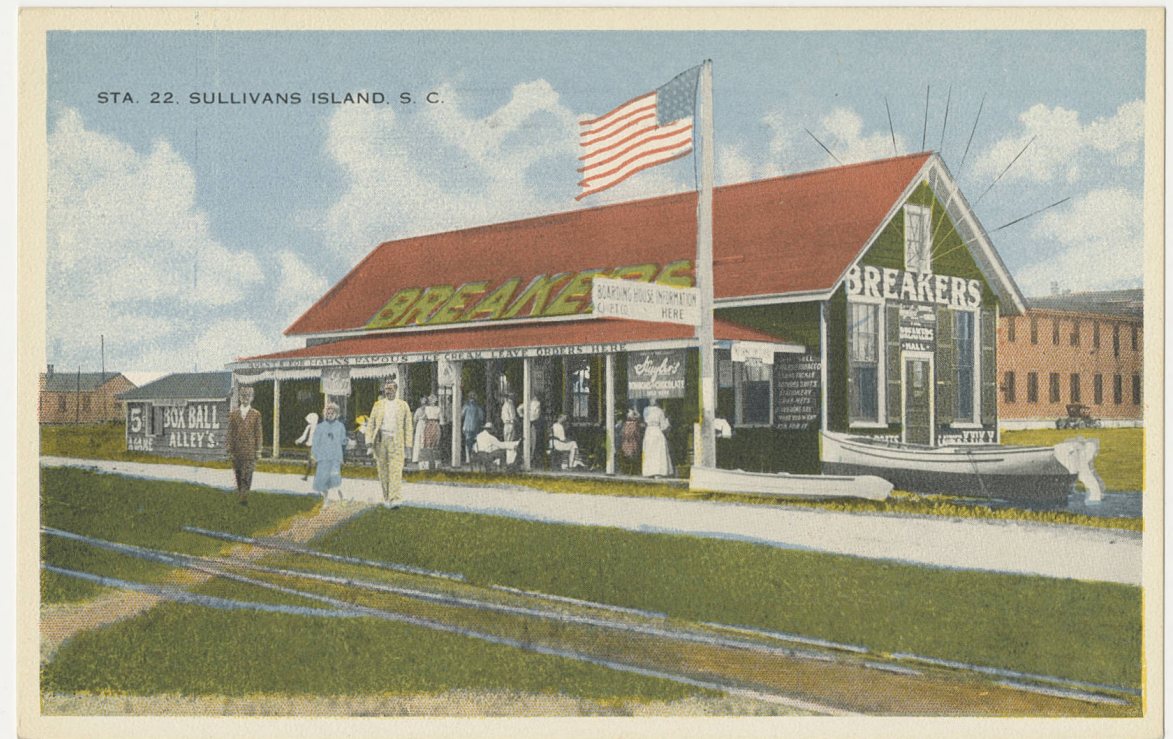
Why Complete a Historic Architectural Resources Survey?

Completed surveys can be used to:

- Identify eligible resources for possible listing in the National Register of Historic Places
- Assist in preservation efforts by Certified Local Governments
- Support local designations of buildings and districts
- Compliance review by government agencies
- Aid preservation and land-use planning
- Increase awareness of, and interest in, a community's historic resources

Town of Sullivan's Island Historic Resources Survey

- Town of Sullivan's Island received a NPS grant through SCDAH to update its historic resource survey
- Revisiting houses, churches, commercial buildings, etc. recorded in previous surveys
- Identifying buildings and structures 40 years old and older that have not been documented
- Fill-in gaps in the data, missing reports
- Inform future update of Historic Preservation Overlay District
- Provide information necessary for Historic Preservation Design Guidelines



Historic Resources Survey Process



South Carolina Grant-Funded Surveys



Project in two parts:

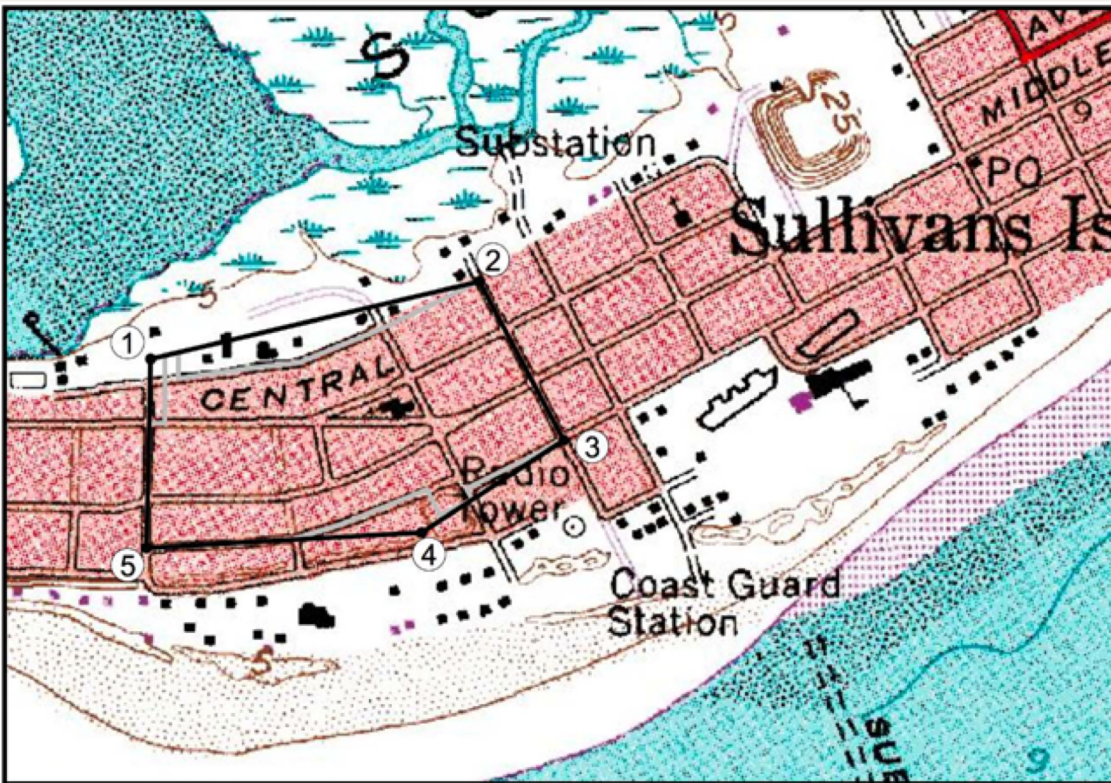
1. Historic Context
 - Will guide the field survey parameters
 - Assist in determining what is important and where are we likely to find it.
2. Identification and documentation of historic architectural resources
 - Will guide later research, projects, and planning

Historic Context

- Historic Context
 - Archival Research:
 - Local and Statewide
 - Existing Secondary Sources:
 - NRHP District Nominations
 - Previous Historic Resources Survey Reports
 - Missing Pieces:
 - African American Context
 - Native American Context



Historic Resources Survey

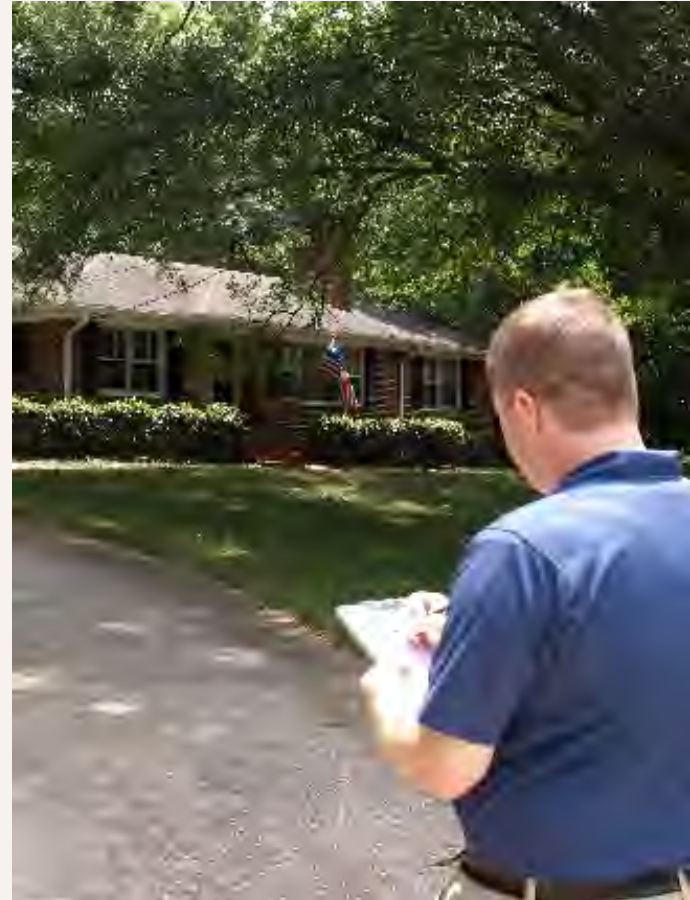


- Survey Preparation

- Create maps from parcel data
 - Tax assessor's records
 - Historic aerial photographs
 - Historic topographic maps
- Import previously recorded data into the survey database

Historic Resources Survey

- Windshield survey
- Document resources
 - Enter architectural details into the survey database on iPad
 - Photograph resource
 - Collect locational data



Columbia Branch Historians

Katie Quinn

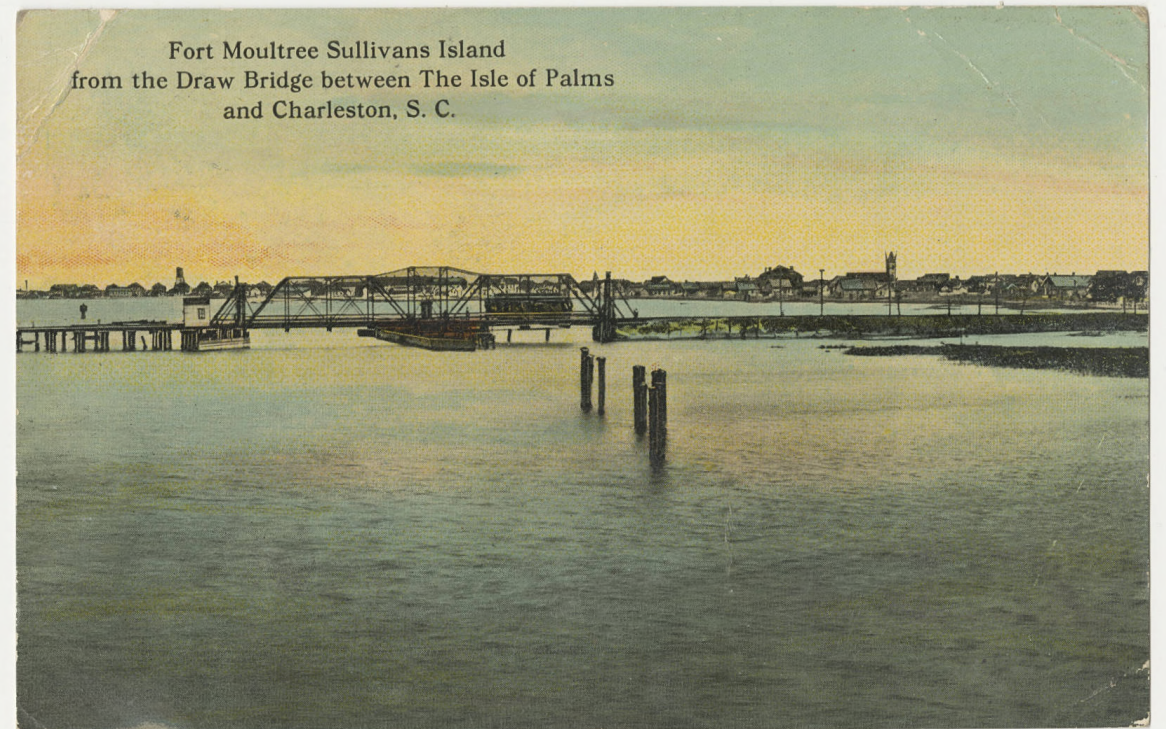


Sean Stucker

- Support Staff:
 - Summer Ciomek - Project Manager
 - Matt Tankersley - Geospatial Data Manager
 - Renee Donnell - Historian who specializes in Oral History

Come talk to us!

Please visit us at the table outside to ask questions about the project or to share any information, histories, or stories about Sullivan's Island.



Thank You!

- Contact Information:

- Summer Ciomek

- sciomek@newsouthassoc.com
 - 770-498-4155 ext. 125

- Katie Quinn

- kquinn@newsouthassoc.com
 - 843-408-3407

