

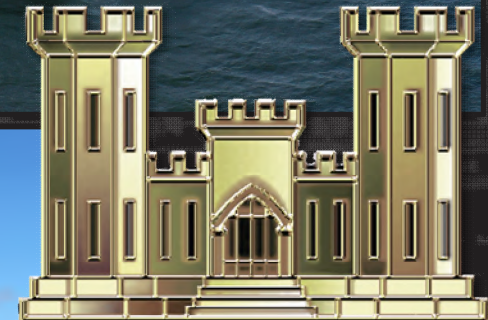
Charleston District

FY24 AIWW Beneficial Use Sediment
Re-handling at Breach Inlet

Sullivan's Island Town Council Meeting
October 17th, 2023

B. Jacob Kyzar, PE
Project Manager

Working Today to Build a Better Tomorrow



US Army Corps
of Engineers®

U.S. ARMY

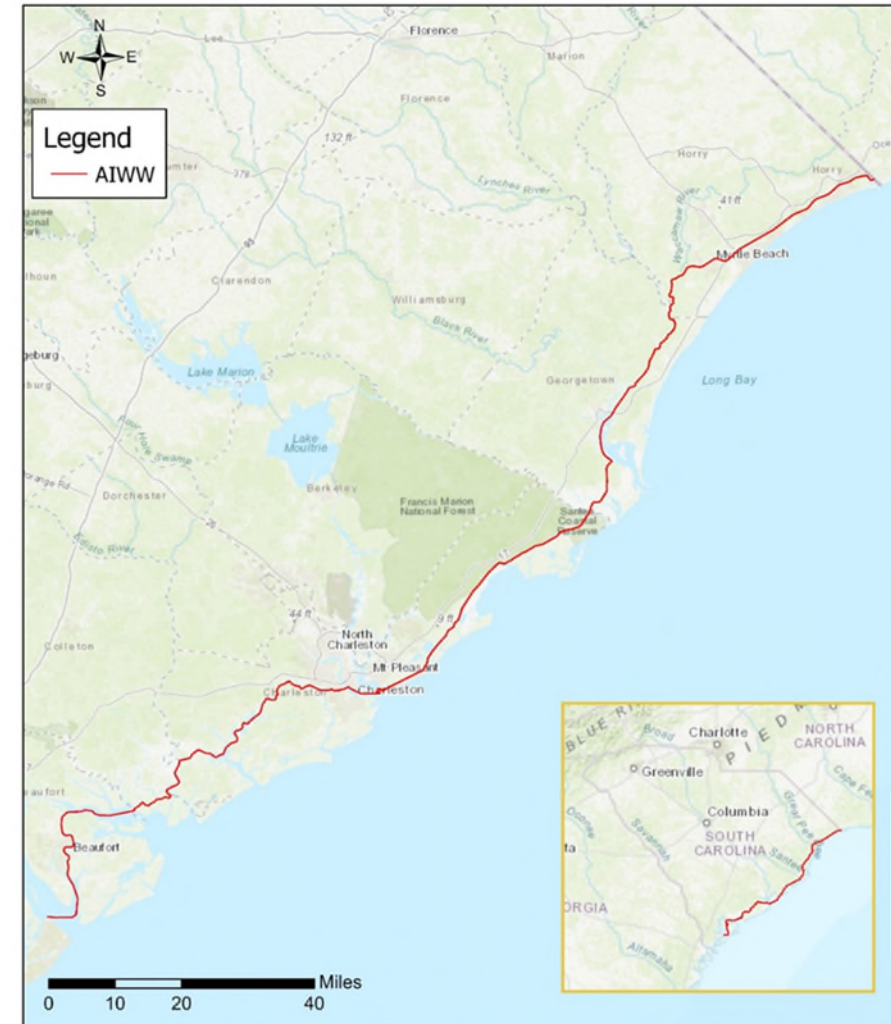


U.S. ARMY

US Army Corps
of Engineers®

PROJECT BACKGROUND

- The Atlantic Intercoastal Waterway (AIWW) is a Federal project, constructed and maintained by the U.S. Army Corps of Engineers (Authorized in 1937)
- ~235 miles total length in S.C. (212 is maintained by Charleston District)
- 12' Depth and 90' Wide along its length.
- Periodic maintenance dredging is conducted where shoals exists to maintain navigation at those dimensions (subject to appropriations)
- Breach Inlet Shoal (in AIWW not inlet) is regularly dredged.



Author: k2op/mr9	Map Date: 12/14/2020	CESAC Atlantic Intracoastal Waterway
Data Sources: USACE Service Layer Credits: World Topographic Map; Sources: Esri, HERE, Garmin, Intermap, Navigation P Corp., GEBCO, USGS, FAO, NPS, NRCAN, GeBCO, IGN, Kadaster NL, Ordnance Survey, Esri, Japan, METI, Esri China (Hong Kong), Swisstopo, Mapbox Contributors, and the GIS User Community	Scale: 1:1,053,139	



U.S. ARMY



US Army Corps
of Engineers®

PROJECT BACKGROUND

3

- Breach Inlet Shoal is periodically dredged, with material being placed in upland placement areas adjacent to AIWW.
- Sites are then dewatered. When full, dikes are raised using the dredged material to create capacity for future dredging needs.
- In past, the Federal standard for disposal has been to dispose of dredged material at lowest acceptable cost.
- Regulations now allow consideration of life cycle costs and environmental benefits in the Federal standard broadening opportunities for beneficial use of dredged material (in this case SAND!)





U.S. ARMY



US Army Corps
of Engineers®

PROPOSED BENEFICIAL USE PROJECT

OVERVIEW

4

- Primary purpose of the project is to regain capacity in several upland dredge placement areas along the AIWW by removing in-situ sand.
- Material will be beneficially used by placing the sand on nearby beaches at Sullivan's Island and IOP.
- Estimated 175,000 CY (17,500 Dump Trucks) of sand placed on Sullivan's Island.

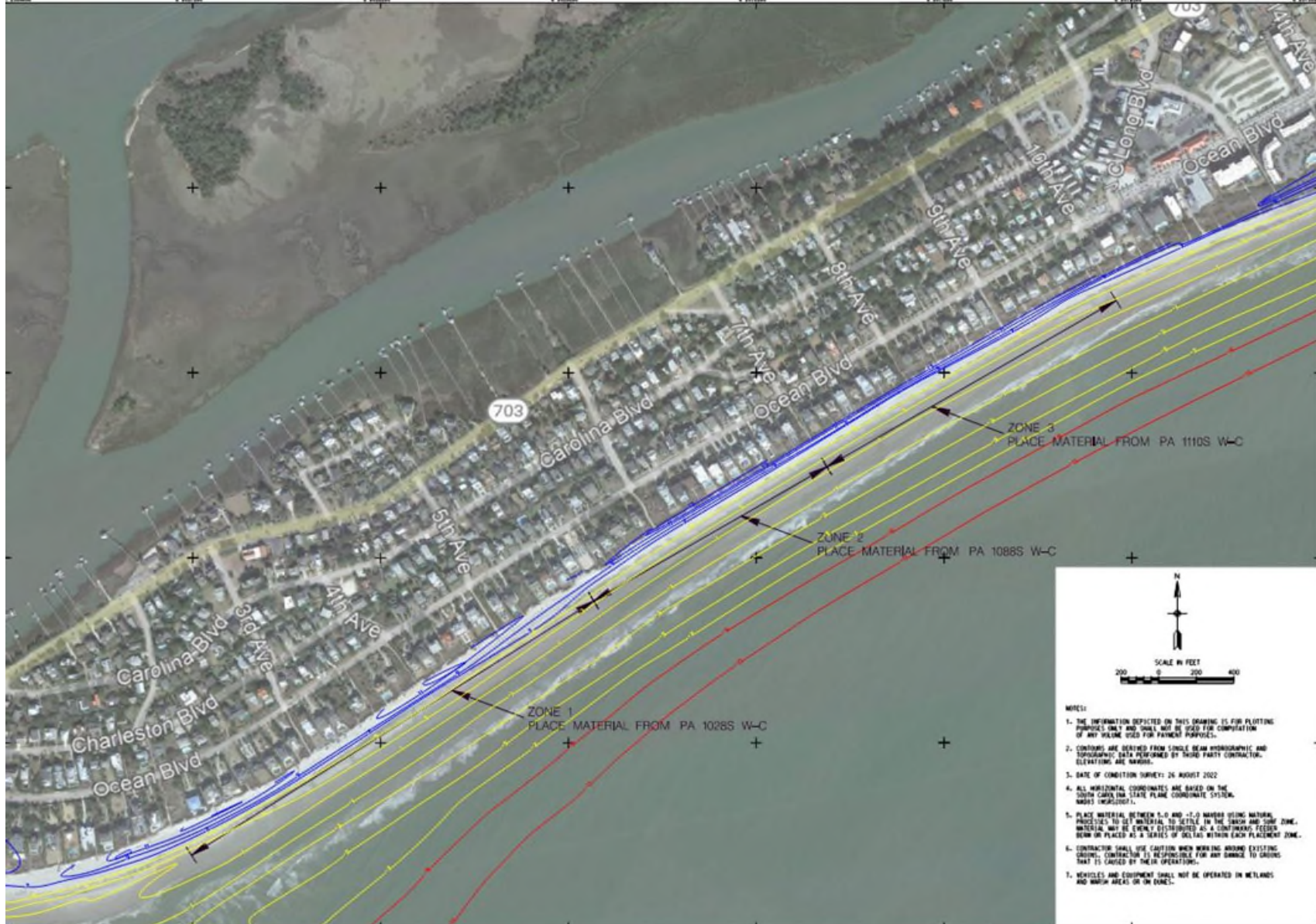




U.S. ARMY



US Army Corps
of Engineers®





U.S. ARMY



US Army Corps
of Engineers®

SCHEDULE

- Award Contract: December 23*
- Construction JAN 23 – JUN 24*
- Estimated 1–2-month placement operation at Sullivan's Island.

*dependent on successful bids





U.S. ARMY



US Army Corps
of Engineers®

DISCUSSION

- Project expectations (beneficial use placement vs. beach renourishment)
 - Material quality, finer sand with some silt
- USACE Future Beneficial use Plans for AIWW Breach Inlet dredging.
- Questions?