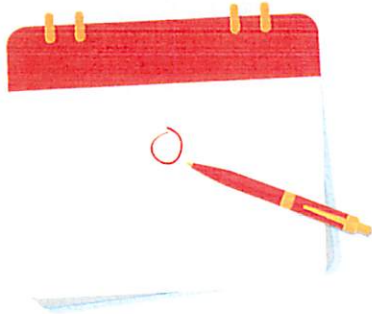


# CHARLESTON COUNTY ENVIRONMENTAL MANAGEMENT



**\*\* NEW RECYCLING COLLECTION SCHEDULE BEGINS JUNE 6TH! \*\***



## ANNOUNCEMENT: NEW COLLECTION SCHEDULE

Republic Services will take over collection of recyclables on **Monday, June 6, 2022**. As part of the transition, the collection schedule will change from four days a week to five days a week.

## FREQUENTLY ASKED QUESTIONS

**Q1:** Will my pickup day change?

**A1:** Some routes will be impacted by the change, but your pickup date will remain the same until June 6, 2022. New collection schedules are posted at [recycle.charlestoncounty.org](http://recycle.charlestoncounty.org) and included in this newsletter. Residents with a change in collection day or week will be notified by postcard as well.

**Q2:** Do I need to order a new cart?

**A2:** Residents do not need to order a new cart. Republic will continue to service the current 95-gallon recycling carts.

**Q3:** What type of recyclables will be accepted?

**A3:** The acceptable material will stay the same including all paper, cardboard, plastic bottles & containers, aluminum & steel cans and glass. Visit [recycle.charlestoncounty.org](http://recycle.charlestoncounty.org) for a detailed list of what to recycle.

**Q4:** What happens on a holiday?

**A4:** If a holiday falls on a weekday, collection will be delayed one (1) day for the remainder of the week. For example, if the holiday falls on Monday, then Monday's collection will be on Tuesday and the one-day delay will occur for the remainder of the week. Collection will occur on Saturdays if needed.

**Q5:** Who do I contact about missed pickups, new carts and cart repairs and questions about recycling?

**A5:** All customer service contacts remain the same. Residents can contact Charleston County using the following methods.

**CITIBOT** Text Hello to (843) 800-4121

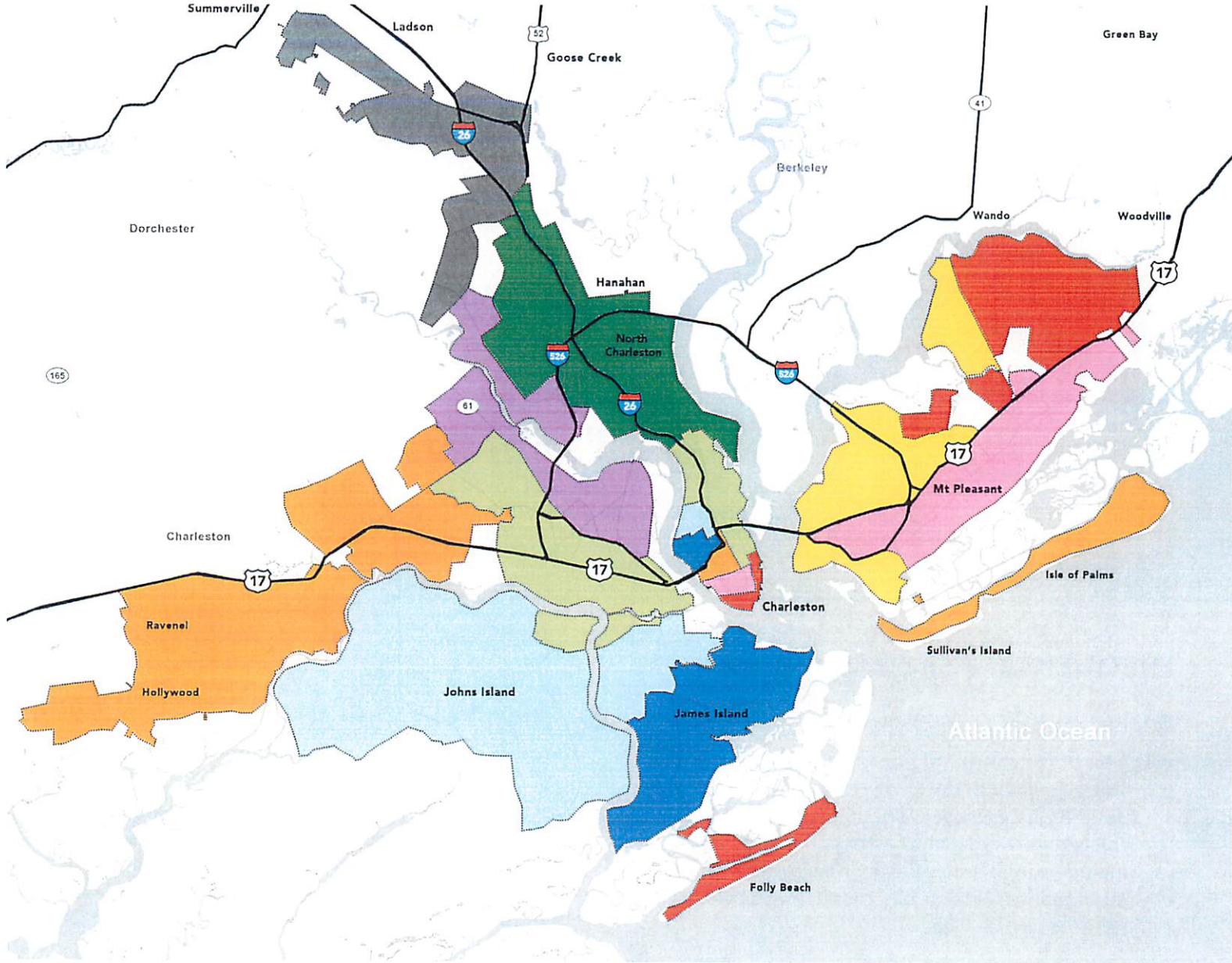
**SOCIAL** Follow us on Facebook  
[@charlestoncountyenvironmentalmanagement](https://www.facebook.com/charlestoncountyenvironmentalmanagement)

**WEB** Visit and live chat [recycle.charlestoncounty.org](http://recycle.charlestoncounty.org)

**EMAIL** [recycle@charlestoncounty.org](mailto:recycle@charlestoncounty.org)

**PHONE** Call (843) 720-7111





- ✓ Residential recycling service occurs every other week.
- ✓ Place all items loose in cart, not in bags or boxes.
- ✓ All material must fit in cart.
- ✓ Place cart at least 3 feet away from any object.
- ✓ Handles facing the house.

- ✓ Have cart out by 7AM on your bi-weekly collection day.
- ✓ No plastic bags. Plastic bags will jam and/or damage automated machinery used to sort and bale recyclables.

When in doubt, throw it out!

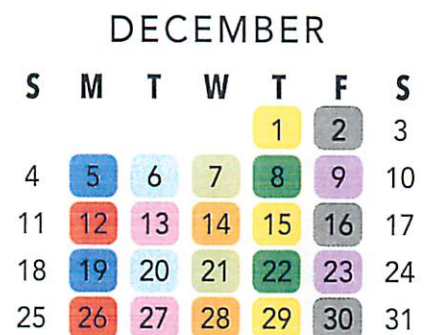
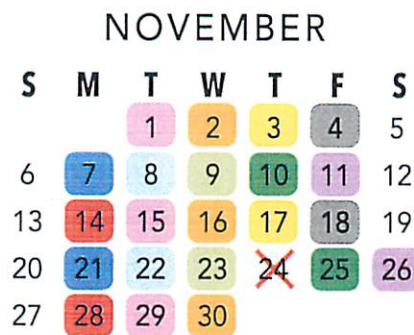
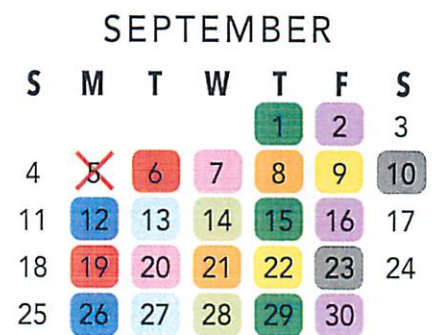


# Residential Recycling Schedule **Beginning June 6, 2022**

<b>COLLECTION WEEK 1</b>	Monday	Tuesday	Wednesday	Thursday	Friday
<b>COLLECTION WEEK 2</b>	Monday	Tuesday	Wednesday	Thursday	Friday

Holidays are indicated by an "X" on the calendar below. You will not receive service on these days.  
 Holiday makeup days occur on the day following your regularly scheduled pickup day.

**Recycling is picked up every other week. Business accounts are picked up weekly and should not use this schedule. If you need assistance identifying your recycling day, please call (843) 720-7111.**



**DO NOT BAG RECYCLABLES**

Place all items loose in the cart,  
 not in bags or boxes. No plastic bags!





**CHARLESTON COUNTY  
ENVIRONMENTAL MANAGEMENT**  
8099 Palmetto Commerce Parkway  
North Charleston, SC 29456

PRSR STD  
U.S. Postage  
**PAID**  
Charleston, SC  
Permit No. 137

ECRWSEDDM  
POSTAL PATRON



## RECYCLE RIGHT!



**PAPER**



**PAPERBOARD &  
CARDBOARD**



**ALUMINUM  
& STEEL CANS**



**PLASTIC BOTTLES  
& CONTAINERS**



**CARTONS**



**GLASS BOTTLE  
& JARS**



## NO PLASTIC BAGS OR FILM

Return clean, dry plastic bags, wraps, and packaging to a local retail or grocery store where available.



Prohibited items will jam and/or damage automated machinery used to sort and bale recyclables.

TRASH INFORMATION



Charleston County Environmental Management does not collect trash, bulk waste, or yardwaste.

These services are managed by the various municipalities and Public Service Districts (PSD) throughout the county.

### Questions About Your Trash Collection?

City of Charleston .....	(843) 724-7311
Folly Beach .....	(843) 588-2447
Isle of Palms .....	(843) 886-5762
James Island PSD .....	(843) 795-9060
Kiawah Island .....	(843) 768-9166
Lincolville .....	(843) 873-3261
Mount Pleasant .....	(843) 884-8517
North Charleston .....	(843) 745-1026
Republic Services .....	(800) 235-4237
Seabrook Island .....	(843) 768-9121
St. Andrews PSD .....	(843) 556-6310
Sullivan's Island .....	(843) 883-3198

**CITIBOT** Text Hello to (843) 800-4121

**SOCIAL** Follow us on Facebook  
@charlestoncountyenvironmentalmanagement

**WEB** Visit and live chat [recycle.charlestoncounty.org](http://recycle.charlestoncounty.org)

**EMAIL** [recycle@charlestoncounty.org](mailto:recycle@charlestoncounty.org)

**PHONE** Call (843) 720-7111