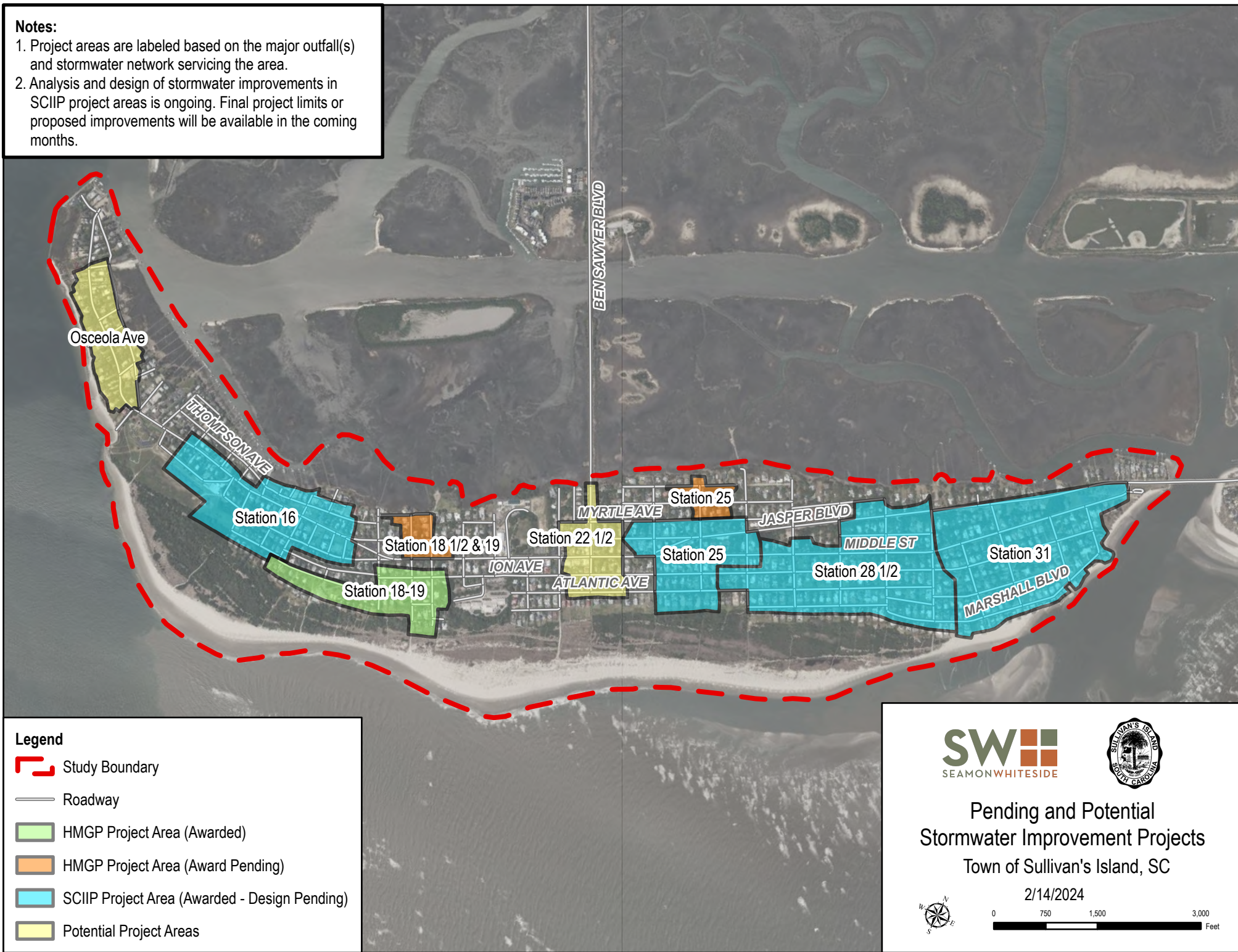


Notes:

1. Project areas are labeled based on the major outfall(s) and stormwater network servicing the area.
2. Analysis and design of stormwater improvements in SCIIIP project areas is ongoing. Final project limits or proposed improvements will be available in the coming months.



Legend

- Study Boundary
- Roadway
- HMGP Project Area (Awarded)
- HMGP Project Area (Award Pending)
- SCIIIP Project Area (Awarded - Design Pending)
- Potential Project Areas



Pending and Potential
Stormwater Improvement Projects
Town of Sullivan's Island, SC

2/14/2024

