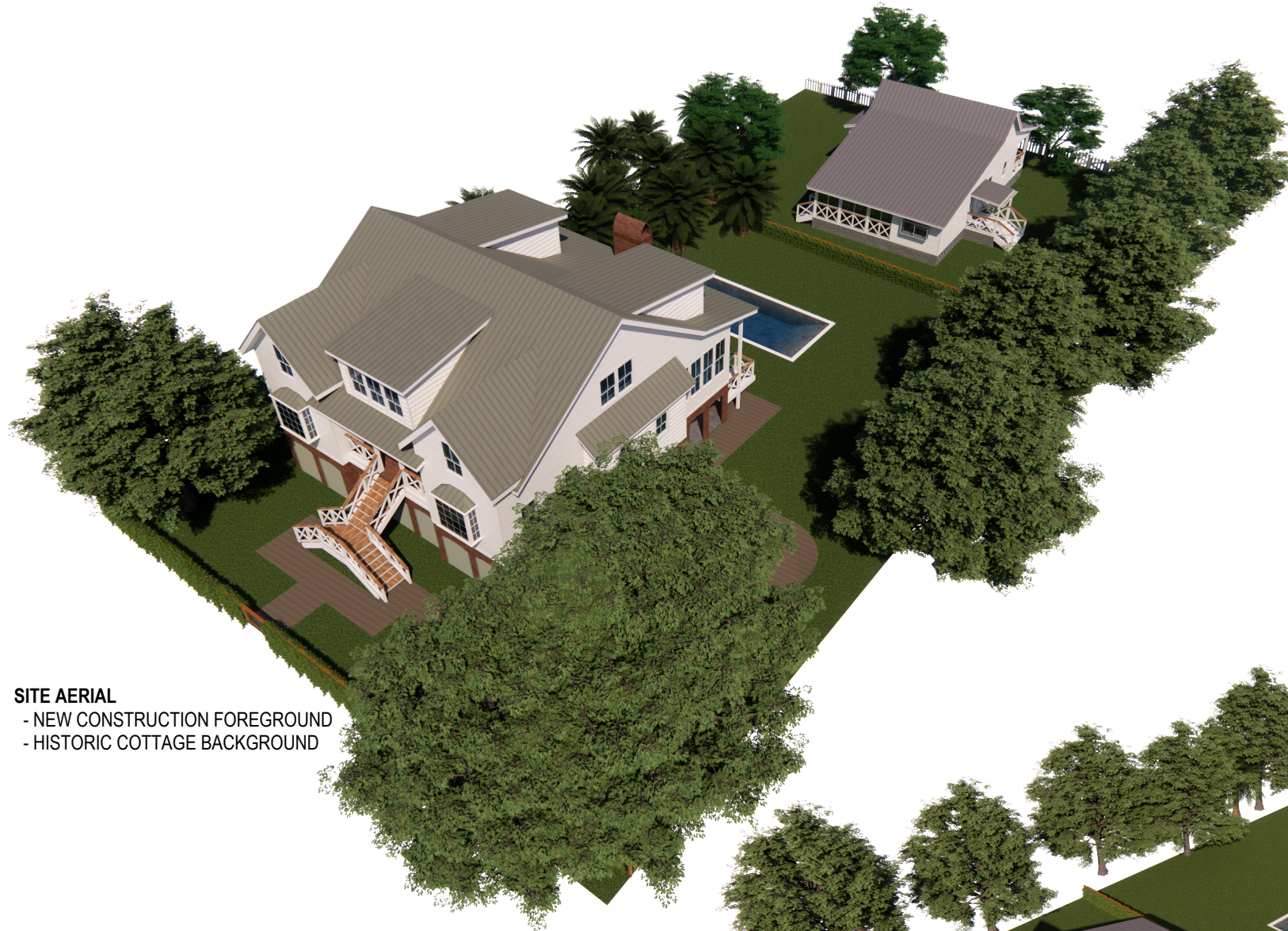


DRAWING INDEX

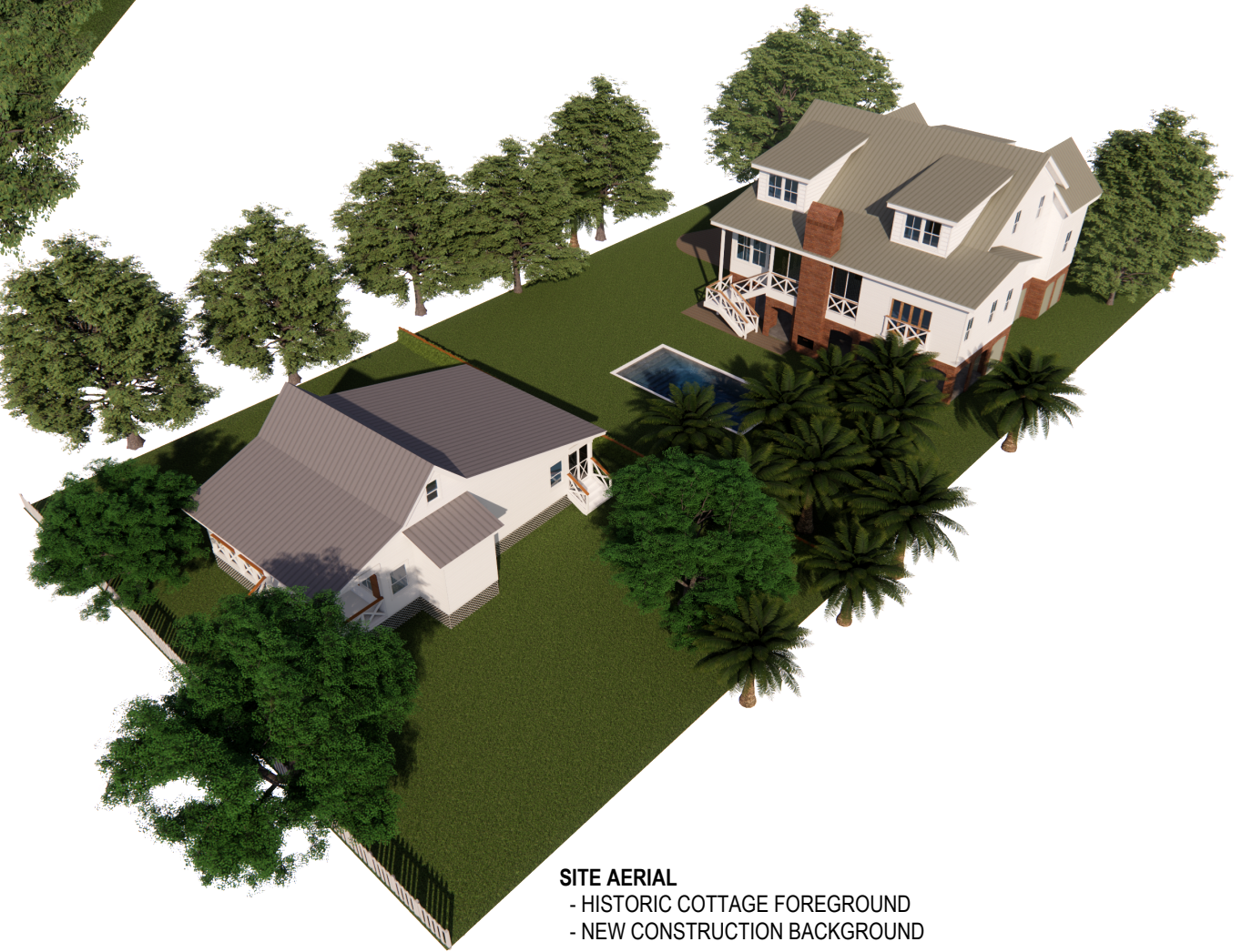
SHEET	SHEET NAME
A-000	COVER
A-100	SURVEY
A-101	EXISTING SITE PLAN
A-102	PROPOSED SITE PLAN
A-103	PROPOSED SITE FLOOR PLAN
HC-A-201	HISTORIC COTTAGE - CURRENT FLOOR PLAN
HC-A-202	HISTORIC COTTAGE - PROPOSED FLOOR PLAN
HC-A-203	HISTORIC COTTAGE - CURRENT ATTIC PLAN
HC-A-204	HISTORIC COTTAGE - PROPOSED ATTIC PLAN
HC-A-701	HISTORIC COTTAGE - EXTERIOR ELEVATIONS
HC-A-702	HISTORIC COTTAGE - EXTERIOR ELEVATIONS
HC-A-703	HISTORIC COTTAGE - EXTERIOR ELEVATIONS
HC-A-704	HISTORIC COTTAGE - EXTERIOR ELEVATIONS
NC-A-200	NEW CONSTRUCTION - GROUND LEVEL PLAN
NC-A-201	NEW CONSTRUCTION - MAIN LEVEL FLOOR PLAN
NC-A-202	NEW CONSTRUCTION - SECOND LEVEL FLOOR PLAN
NC-A-701	NEW CONSTRUCTION - EXTERIOR ELEVATIONS
NC-A-702	NEW CONSTRUCTION - EXTERIOR ELEVATIONS
NC-A-703	NEW CONSTRUCTION - EXTERIOR ELEVATIONS
NC-A-704	NEW CONSTRUCTION - EXTERIOR ELEVATIONS
NC-A-801	NEW CONSTRUCTION - BUILDING SECTION
A-901	PERSPECTIVES
A-902	STREETSCAPE

SITE STATISTICS

2608 MYRTLE AVE	
LOT 86 EAST, ATLANTICVILLE	
LOT SIZE	22,026 SF (.51 ACRES)
PRINCIPAL BUILDING AREA - STANDARD	4,102 SF
PRINCIPAL BUILDING AREA - PROPOSED	4,848 SF
HISTORIC DWELLING	1,199 SF
PROPOSED DWELLING	3,649 SF
PRINCIPAL BUILDING COVERAGE - STANDARD	3,304 SF
PRINCIPAL BUILDING COVERAGE - PROPOSED	3,616 SF
HISTORIC DWELLING	1,199 SF
PROPOSED DWELLING	2,417 SF
IMPERVIOUS COVERAGE - ALLOWABLE	6,607 SF
IMPERVIOUS COVERAGE - PROPOSED	5,300 SF
HISTORIC DWELLING	1,689 SF
PROPOSED DWELLING	3,099 SF
PROPOSED SWIMMING POOL AREA	512 SF



SITE AERIAL
 - NEW CONSTRUCTION FOREGROUND
 - HISTORIC COTTAGE BACKGROUND

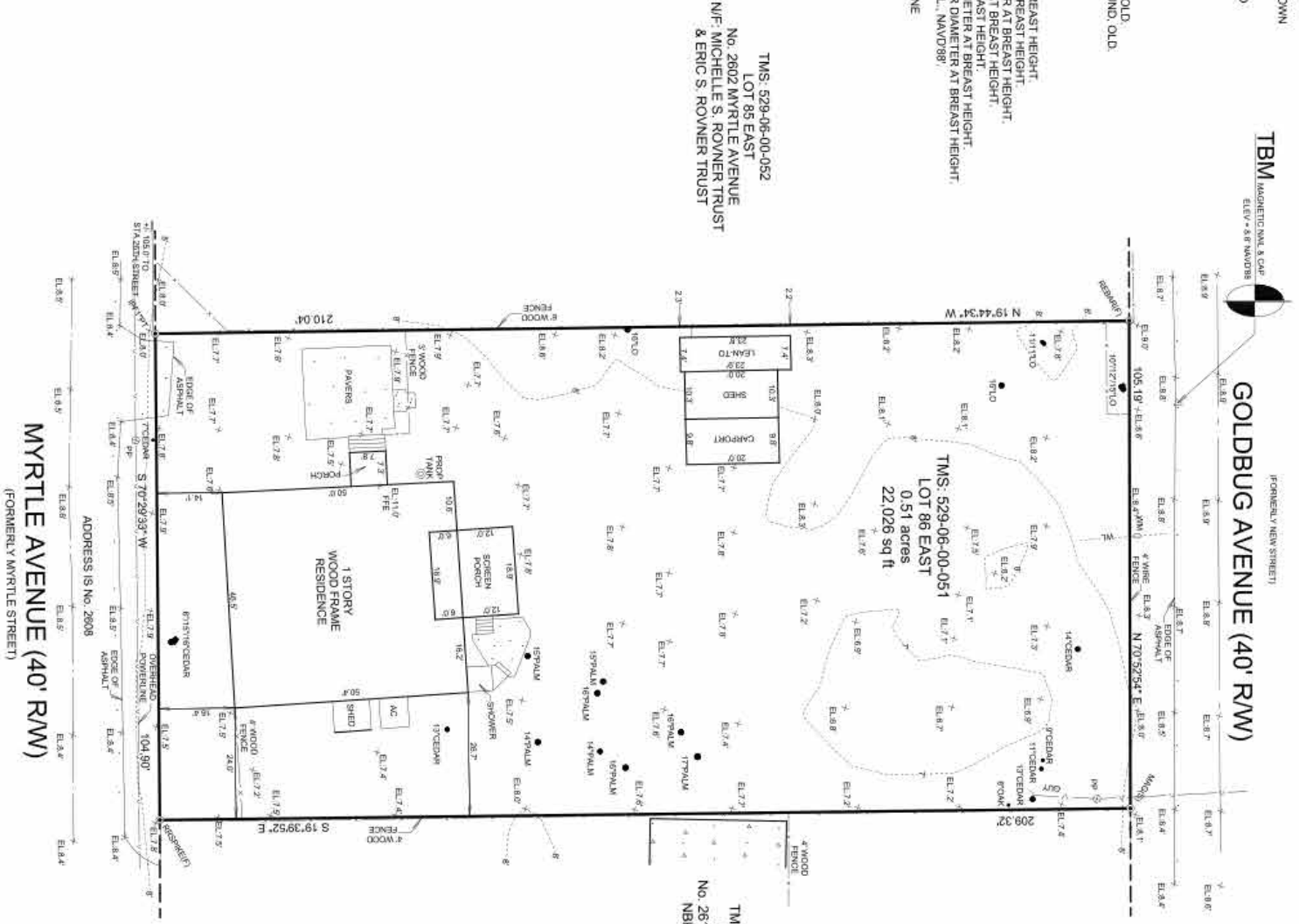


SITE AERIAL
 - HISTORIC COTTAGE FOREGROUND
 - NEW CONSTRUCTION BACKGROUND

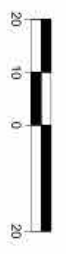
I HEREBY STATE THAT TO THE BEST OF MY KNOWLEDGE, INFORMATION, AND BELIEF, THE SURVEY SHOWN HEREIN WAS MADE IN ACCORDANCE WITH THE REQUIREMENTS OF THE STANDARDS OF PRACTICE MANUAL FOR SURVEYING IN SOUTH CAROLINA, AND MEETS OR EXCEEDS THE REQUIREMENTS FOR A CLASS "A" SURVEY AS SPECIFIED THEREIN. ALSO THERE ARE NO VISIBLE ENCROACHMENTS OR PROJECTIONS OTHER THAN SHOWN. I CERTIFY THAT THE PROPERTY SHOWN HEREON IS IN A SPECIAL FLOOD HAZARD ZONE ACCORDING TO FEMA, AND HAD FLOOD HAZARD BOUNDARY MAPS.

- NOTES:
1. PROPERTY APPEARS IN FLOOD ZONE AE, EL. 10' ON FIRM COMMUNITY-PANEL NUMBER 45019C0339K, MAP REVISED JANUARY 29, 2021.
 2. THE BEARINGS SHOWN ARE MAGNETIC AND SUBJECT TO LOCAL ATTRACTION.
 3. ANYTHING SHOWN OUTSIDE OF THE DEFINED BOUNDARY IS FOR DESCRIPTIVE PURPOSES ONLY.
 4. THIS SURVEY IS BASED ON THE REFERENCE SHOWN AND DOES NOT CONSTITUTE A TITLE SEARCH.
 5. ALL TREES 6" DIAMETER AT BREAKST HEIGHT AND LARGER SHOWN HEREON.

- LEGEND:
- RAILROAD SPIKE FOUND, OLD.
 - REBAR FOUND, TOP PIPE FOUND, OLD.
 - REBAR FOUND, OLD.
 - POWER POLE.
 - GUY WIRE.
 - WATER METER.
 - 6" PALM DIAMETER AT BREAKST HEIGHT.
 - 11" CEDAR DIAMETER AT BREAKST HEIGHT.
 - 18" HACKBERRY DIAMETER AT BREAKST HEIGHT.
 - 15" LIVE OAK DIAMETER AT BREAKST HEIGHT.
 - 6" OAK DIAMETER AT BREAKST HEIGHT.
 - 11" TYPICAL DOUBLE OAK DIAMETER AT BREAKST HEIGHT.
 - 11" TYPICAL SINGLE OAK DIAMETER AT BREAKST HEIGHT.
 - SPOT ELEVATION 0.0' M.S.L. NAVD83.
 - 8" CONTOUR LINE.
 - UNDERGROUND WATER LINE.

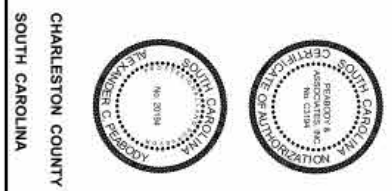


TOPOGRAPHIC PLAT
 OF LOT 86 EAST, ATLANTICVILLE,
 TOWN OF SULLIVAN'S ISLAND, CHARLESTON COUNTY, SOUTH CAROLINA,
 PRESENTLY OWNED BY 806282 TRUST.



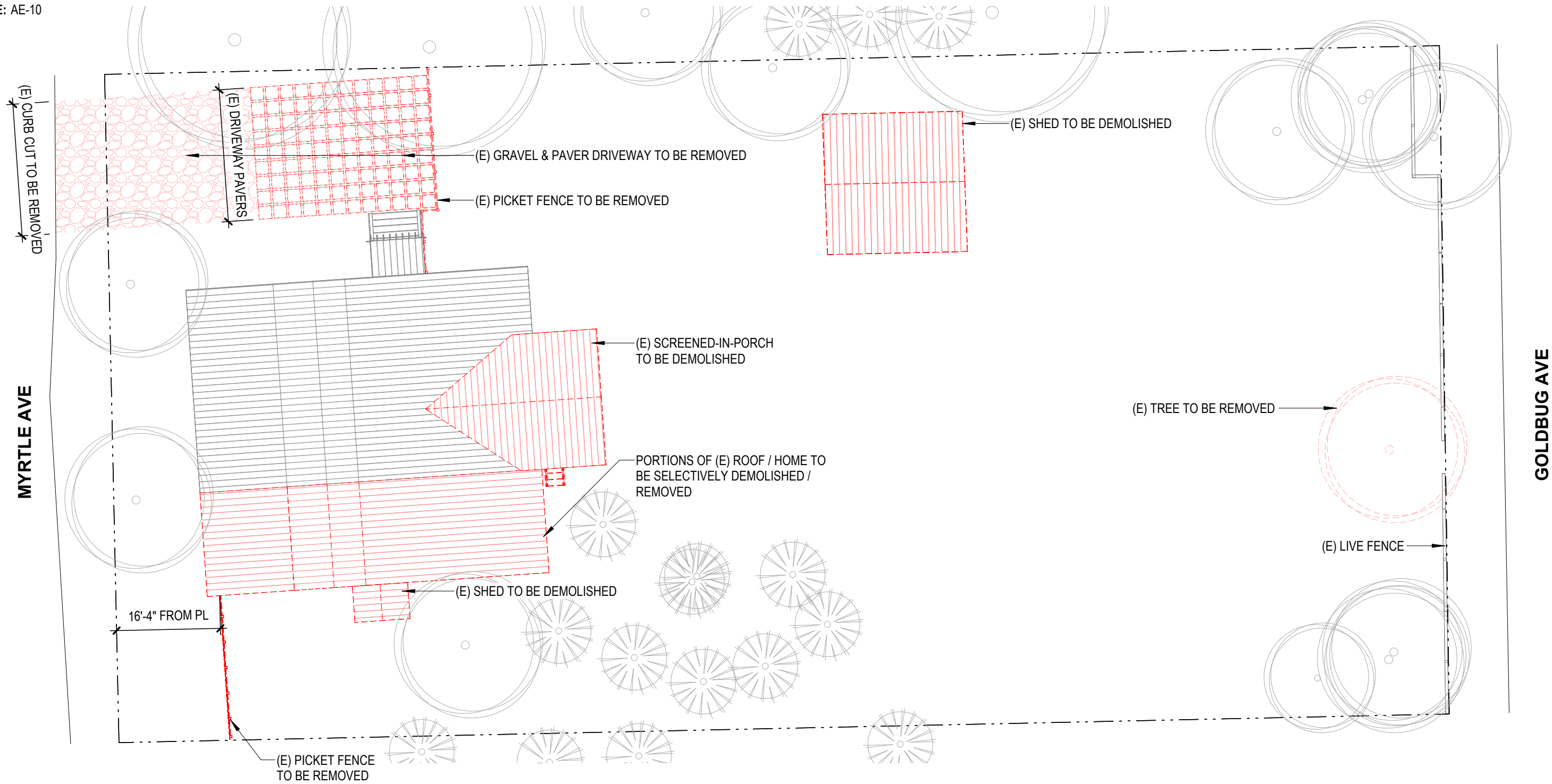
SCALE: 1" = 20'
 DATE: AUGUST 11, 2015
 REV.: SEPTEMBER 13, 2021
 REV.: AUGUST 29, 2024
 REF: PLAT BK. "C", PG. 043
 TMS: 529-06-00-051

[Signature]
 ALEXANDER C. PEABODY, PLS.
 PEABODY & ASSOCIATES, INC.
 PROFESSIONAL LAND SURVEYING
 P.O. BOX 22946 CHARLESTON, SC 29413
 OFFICE 843-723-4225 MOBILE 843-270-4847



CHARLESTON COUNTY
 SOUTH CAROLINA

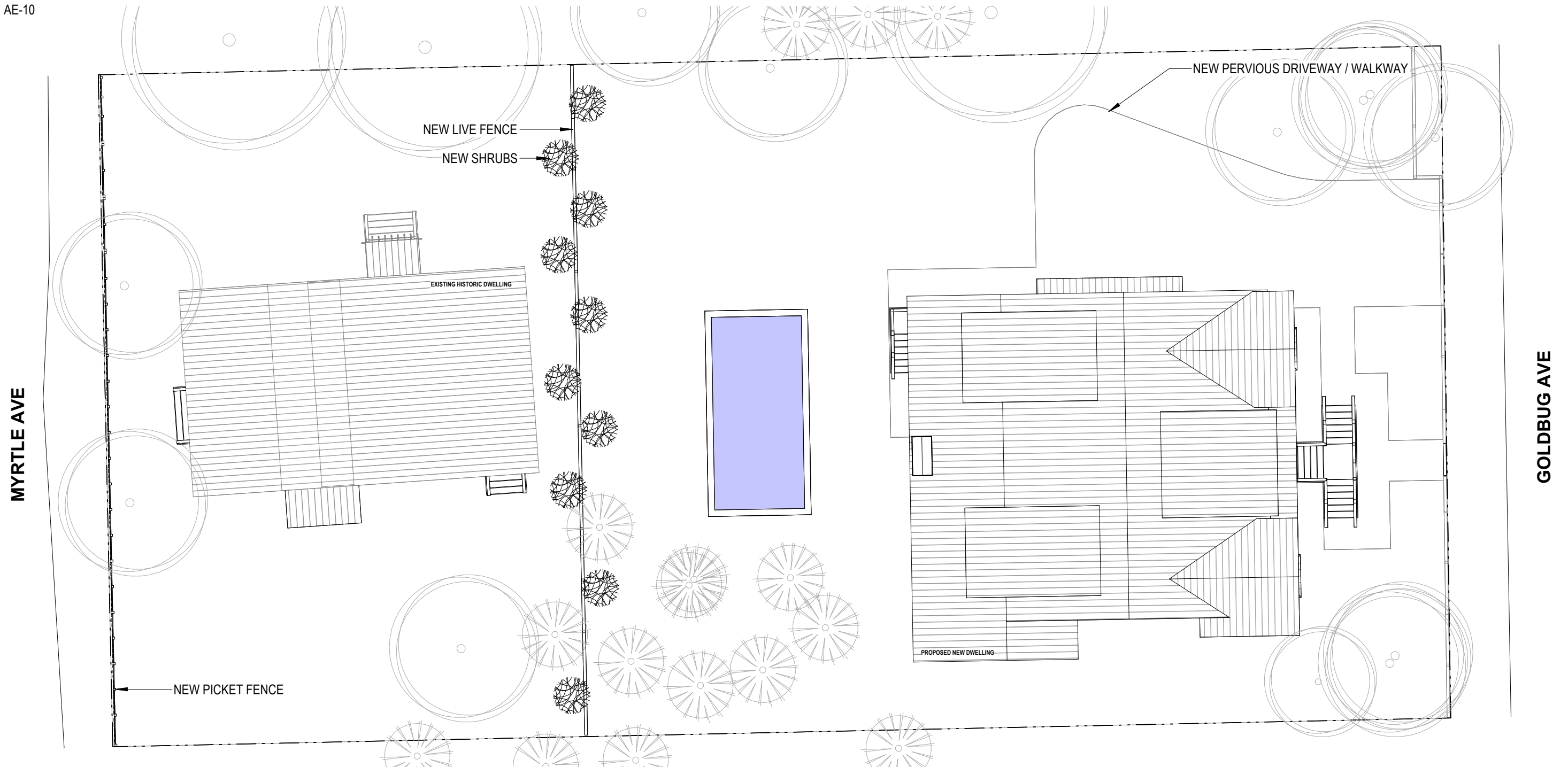
** SIZE REDUCED TO FIT ON 11X17 SHEET **



1 SITE DIAGRAM - EXISTING

SCALE: 1/16" = 1'-0"

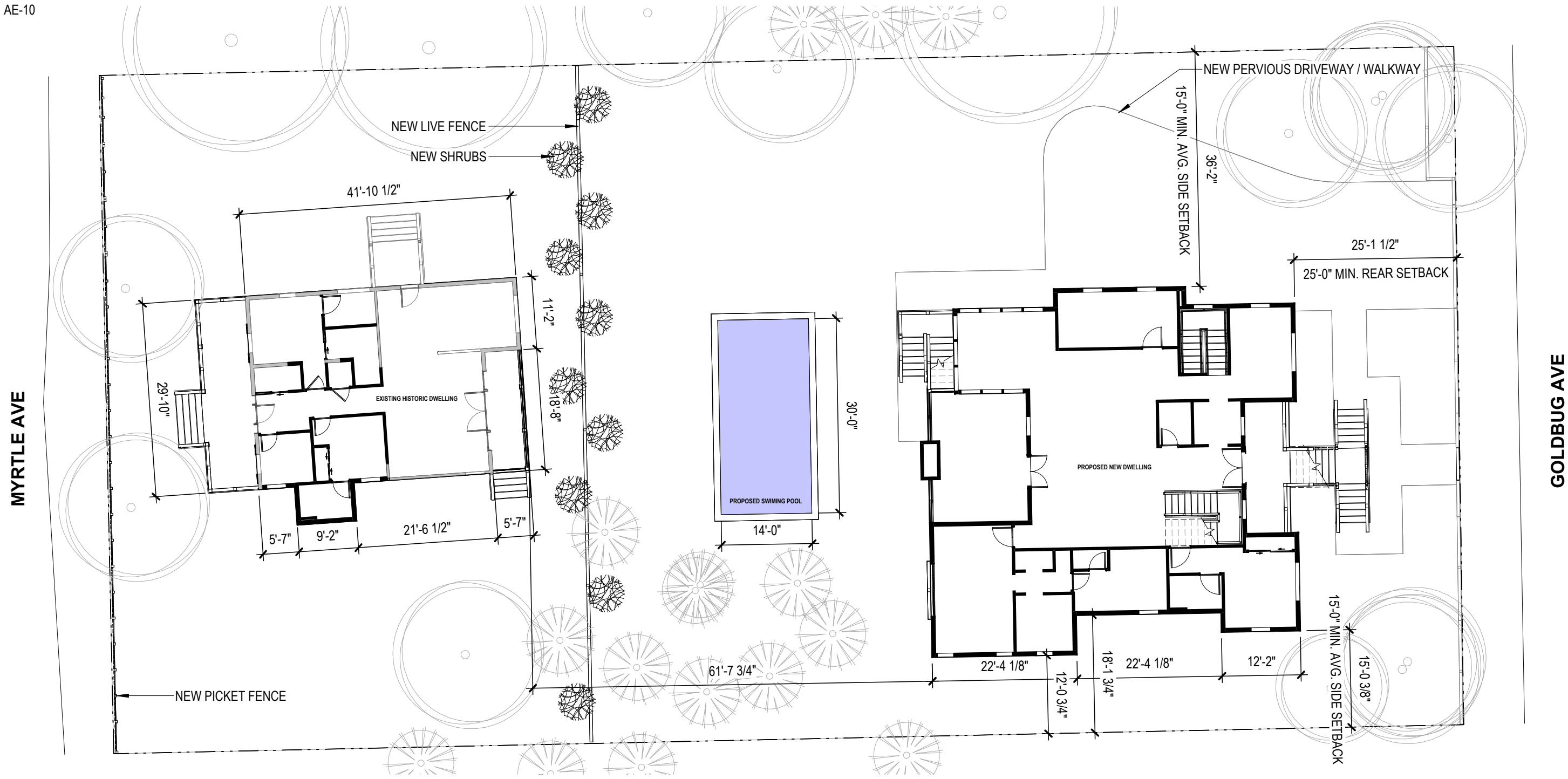




1 SITE DIAGRAM - PROPOSED

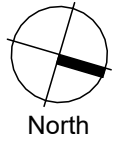
SCALE: 1/16" = 1'-0"





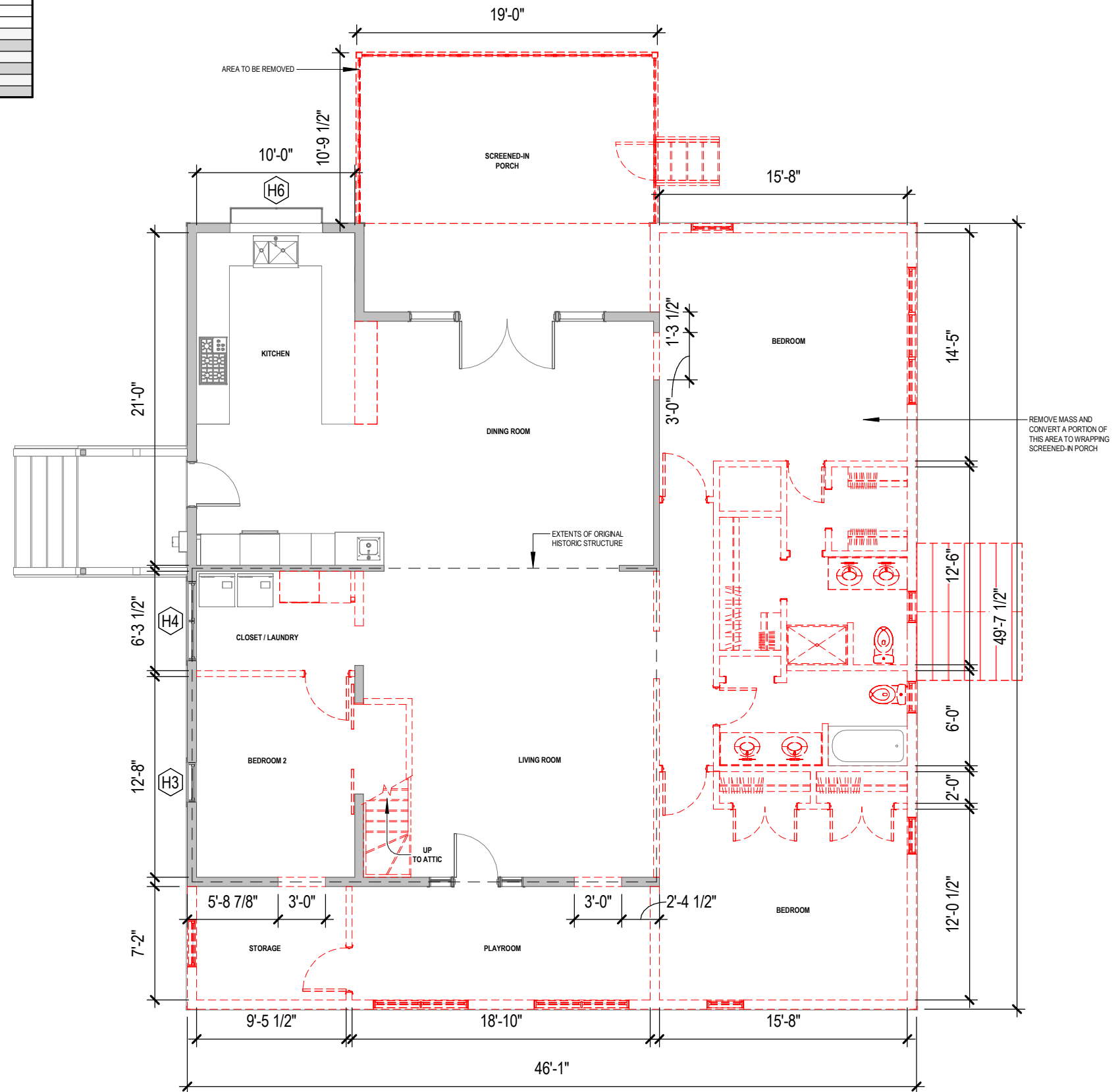
1 SITE DIAGRAM - PROPOSED - PLAN

SCALE: 1/16" = 1'-0"

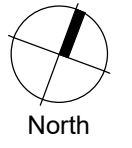


WINDOW SCHEDULE - HISTORIC COTTAGE						
TAG	WIDTH	HEIGHT	TYPE	LITES	FUNCTION	NOTES
H1	36"	54"	SINGLE HUNG	4	OPERABLE	RESTORATION GRADE, 2 OVER 2
H2	36"	54"	SINGLE HUNG	4	OPERABLE	RE-PURPOSED WOOD WINDOWS
H3	30"	48"	SINGLE HUNG	2	OPERABLE	(E) WINDOW TO REMAIN, PRESERVED
H4	60"	48"	SINGLE HUNG	2	OPERABLE	(E) WINDOW TO REMAIN, PRESERVED
H5	28"	42"	SINGLE HUNG	2	OPERABLE	NEW WOOD-CLAD WINDOW
H6	70"	48"	GARDEN	5	FIXED	(E) WINDOW TO REMAIN, PRESERVED

PHASING LEGEND	
	(E) TO BE REMOVED / DEMOLISHED
	(E) TO REMAIN
	NEW

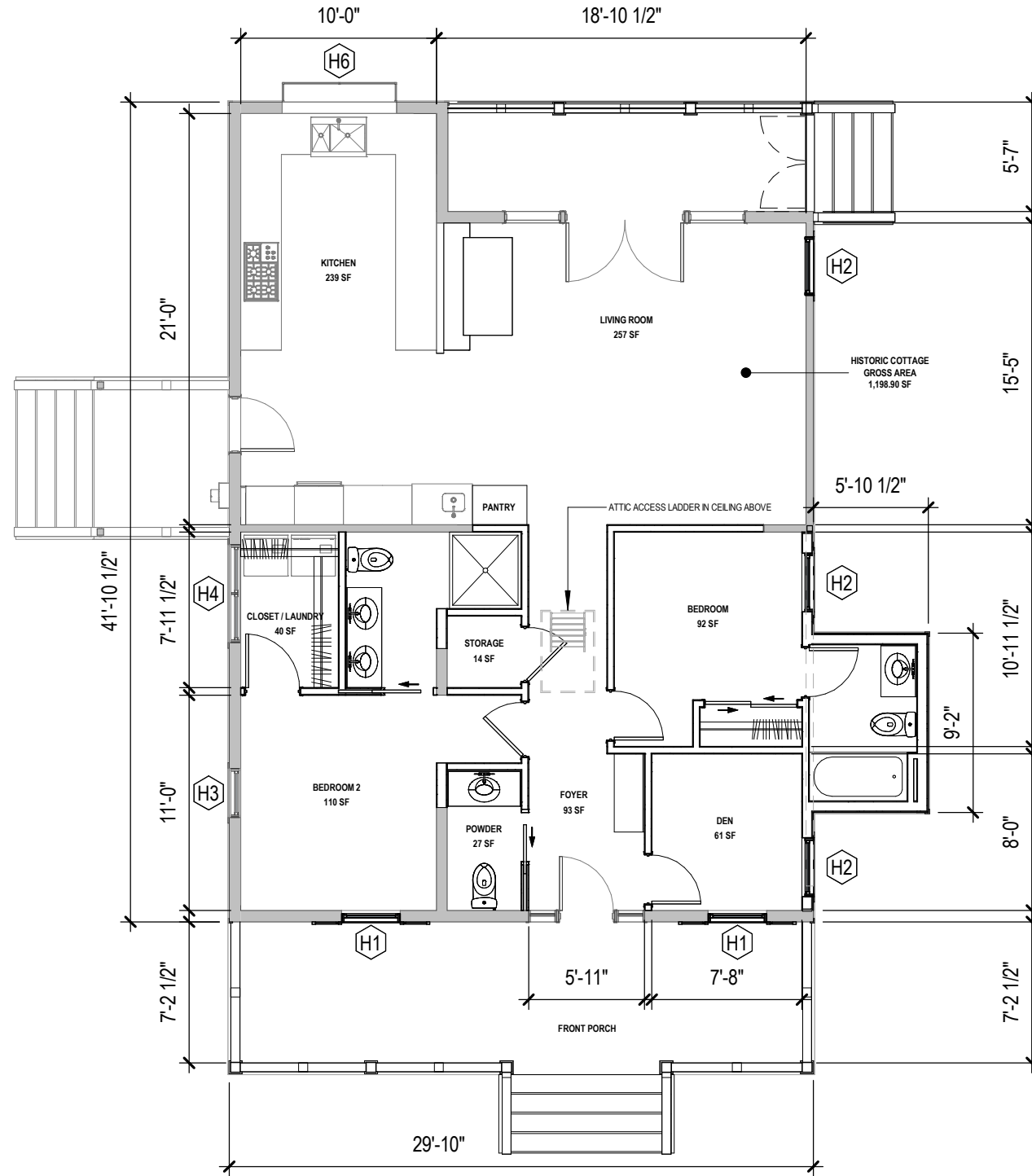


1 FLOOR PLAN- GROUND LEVEL
SCALE: 1/8" = 1'-0"



WINDOW SCHEDULE - HISTORIC COTTAGE						
TAG	WIDTH	HEIGHT	TYPE	LITES	FUNCTION	NOTES
H1	36"	54"	SINGLE HUNG	4	OPERABLE	RESTORATION GRADE, 2 OVER 2
H2	36"	54"	SINGLE HUNG	4	OPERABLE	RE-PURPOSED WOOD WINDOWS
H3	30"	48"	SINGLE HUNG	2	OPERABLE	(E) WINDOW TO REMAIN, PRESERVED
H4	60"	48"	SINGLE HUNG	2	OPERABLE	(E) WINDOW TO REMAIN, PRESERVED
H5	28"	42"	SINGLE HUNG	2	OPERABLE	NEW WOOD-CLAD WINDOW
H6	70"	48"	GARDEN	5	FIXED	(E) WINDOW TO REMAIN, PRESERVED

PHASING LEGEND	
	(E) TO BE REMOVED / DEMOLISHED
	(E) TO REMAIN
	NEW

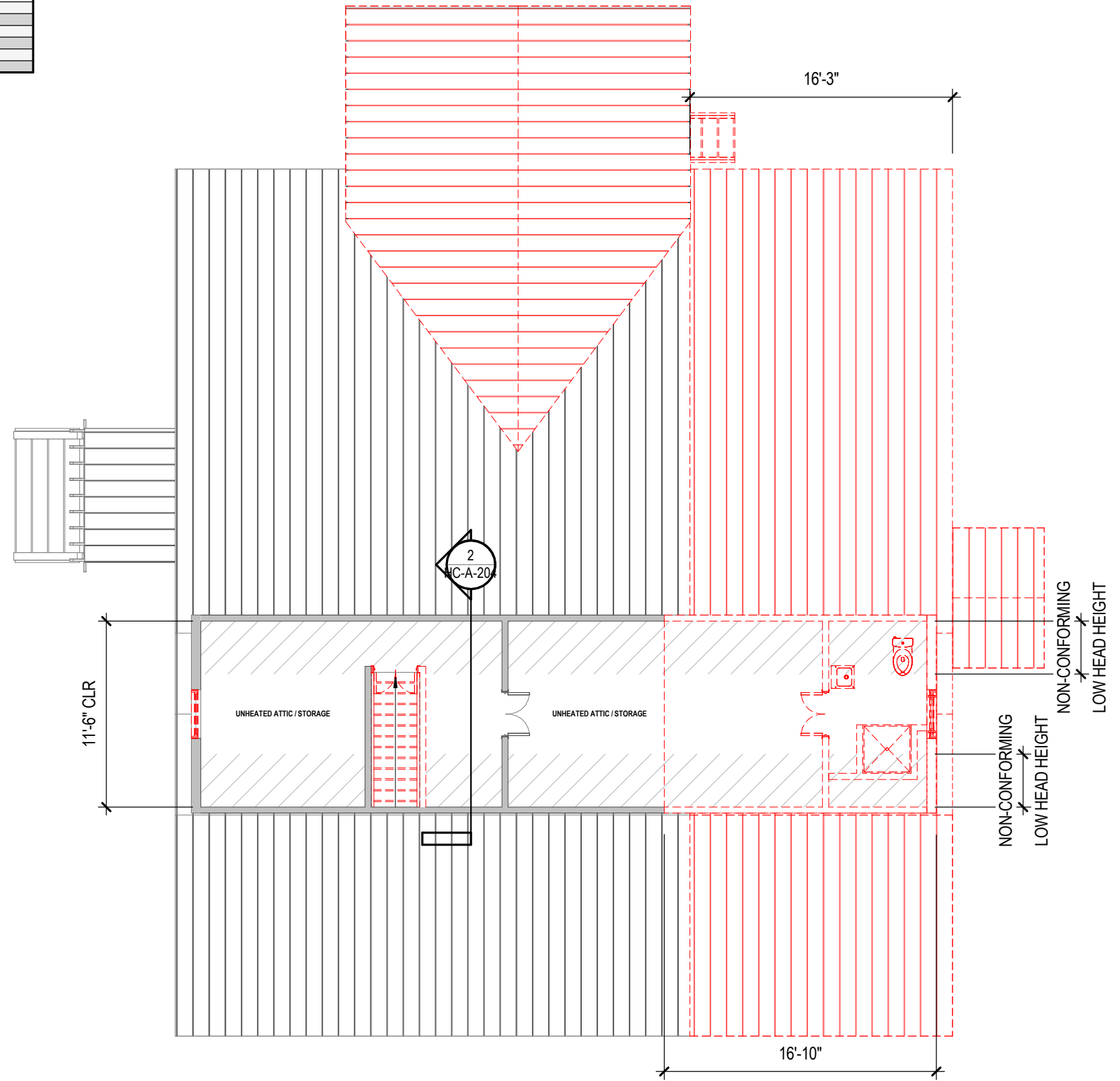


1 FLOOR PLAN- GROUND LEVEL
SCALE: 1/8" = 1'-0"

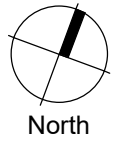


WINDOW SCHEDULE - HISTORIC COTTAGE						
TAG	WIDTH	HEIGHT	TYPE	LITES	FUNCTION	NOTES
H1	36"	54"	SINGLE HUNG	4	OPERABLE	RESTORATION GRADE, 2 OVER 2
H2	36"	54"	SINGLE HUNG	4	OPERABLE	RE-PURPOSED WOOD WINDOWS
H3	30"	48"	SINGLE HUNG	2	OPERABLE	(E) WINDOW TO REMAIN, PRESERVED
H4	60"	48"	SINGLE HUNG	2	OPERABLE	(E) WINDOW TO REMAIN, PRESERVED
H5	28"	42"	SINGLE HUNG	2	OPERABLE	NEW WOOD-CLAD WINDOW
H6	70"	48"	GARDEN	5	FIXED	(E) WINDOW TO REMAIN, PRESERVED

PHASING LEGEND	
	(E) TO BE REMOVED / DEMOLISHED
	(E) TO REMAIN
	NEW

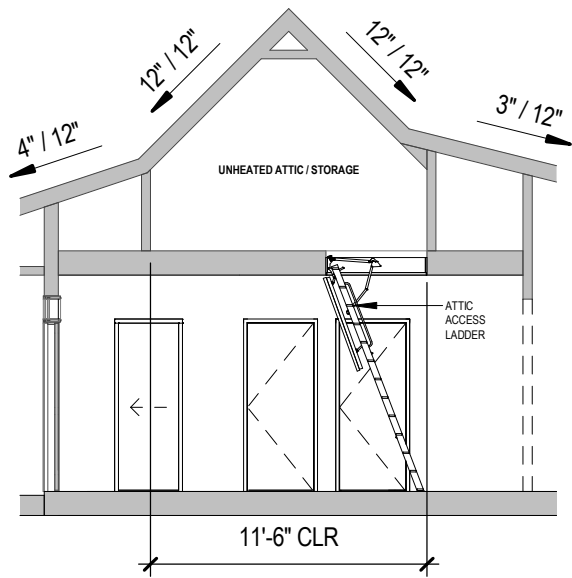


1 FLOOR PLAN- ATTIC
SCALE: 1/8" = 1'-0"



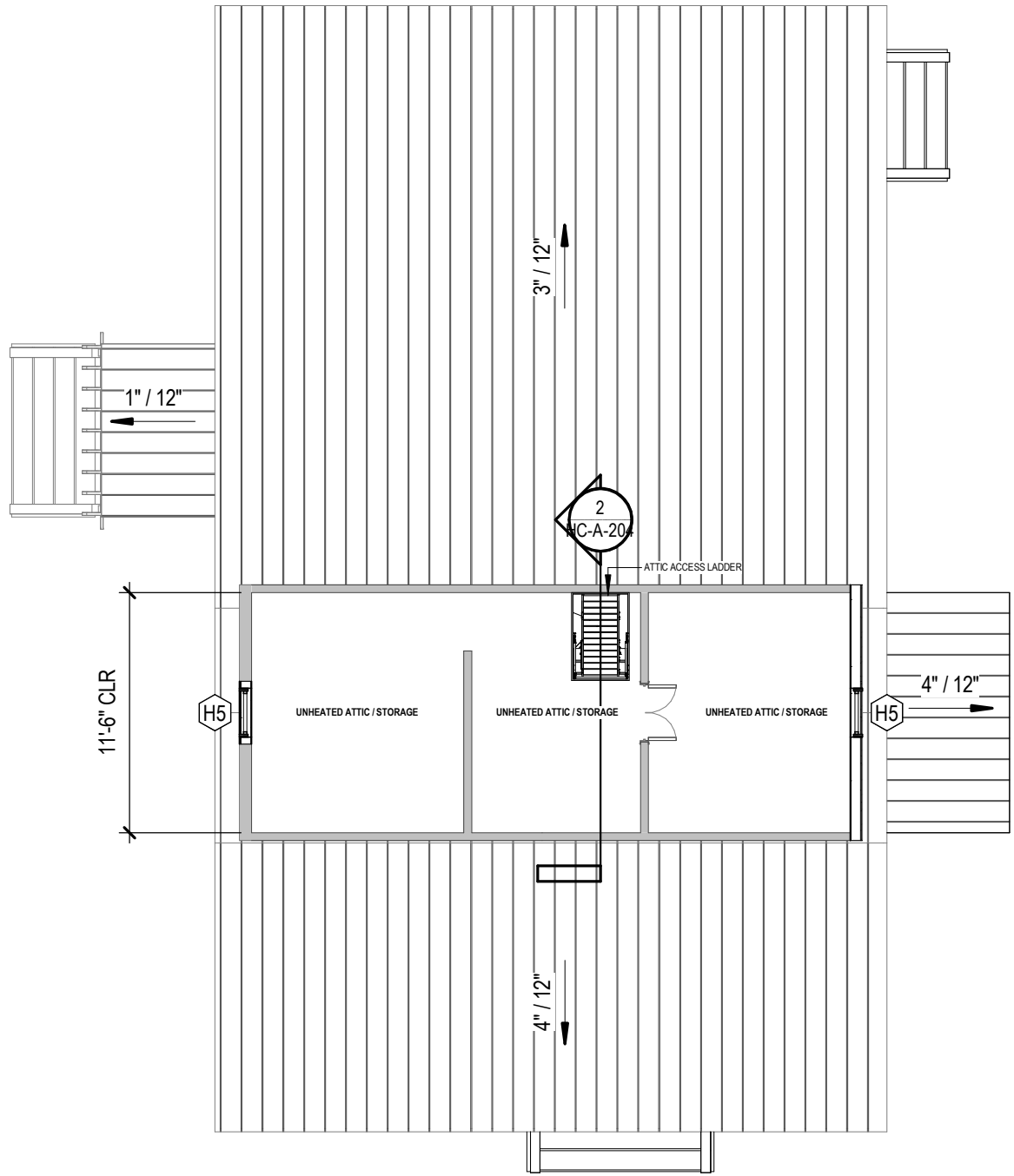
WINDOW SCHEDULE - HISTORIC COTTAGE						
TAG	WIDTH	HEIGHT	TYPE	LITES	FUNCTION	NOTES
H1	36"	54"	SINGLE HUNG	4	OPERABLE	RESTORATION GRADE, 2 OVER 2
H2	36"	54"	SINGLE HUNG	4	OPERABLE	RE-PURPOSED WOOD WINDOWS
H3	30"	48"	SINGLE HUNG	2	OPERABLE	(E) WINDOW TO REMAIN, PRESERVED
H4	60"	48"	SINGLE HUNG	2	OPERABLE	(E) WINDOW TO REMAIN, PRESERVED
H5	28"	42"	SINGLE HUNG	2	OPERABLE	NEW WOOD-CLAD WINDOW
H6	70"	48"	GARDEN	5	FIXED	(E) WINDOW TO REMAIN, PRESERVED

PHASING LEGEND	
	(E) TO BE REMOVED / DEMOLISHED
	(E) TO REMAIN
	NEW



2 SECTION THROUGH ATTIC

SCALE: 1/8" = 1'-0"



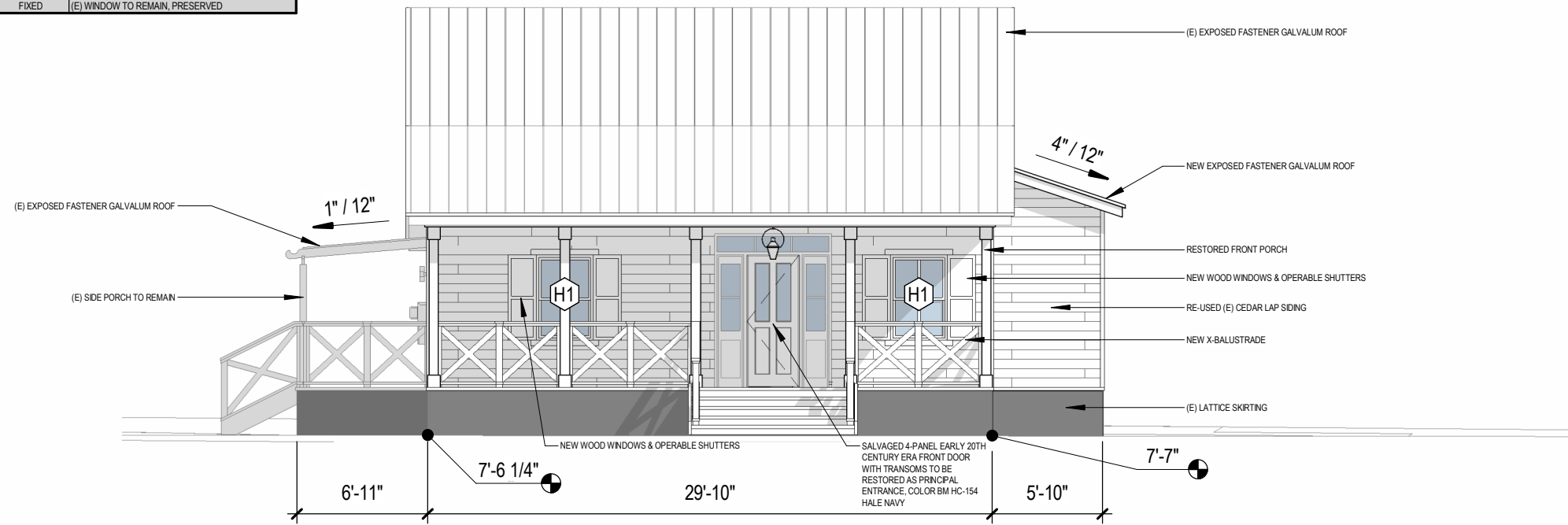
1 FLOOR PLAN- ATTIC

SCALE: 1/8" = 1'-0"

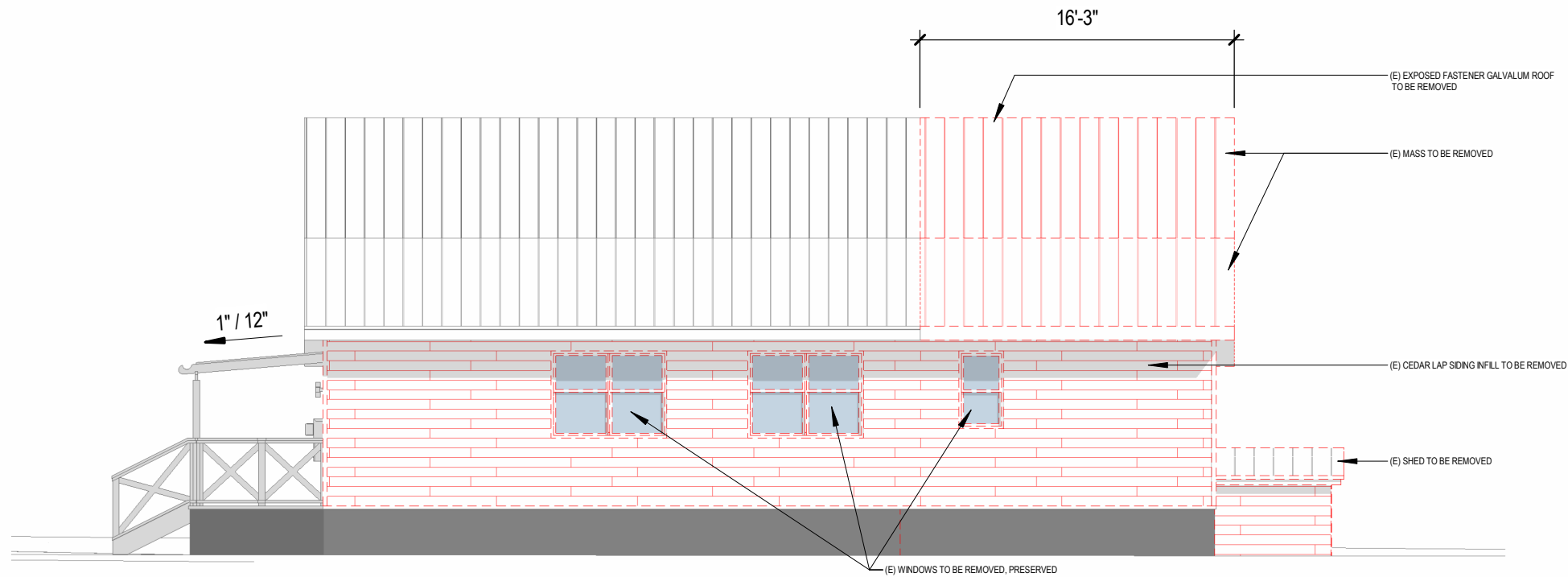


WINDOW SCHEDULE - HISTORIC COTTAGE						
TAG	WIDTH	HEIGHT	TYPE	LITES	FUNCTION	NOTES
H1	36"	54"	SINGLE HUNG	4	OPERABLE	RESTORATION GRADE, 2 OVER 2
H2	36"	54"	SINGLE HUNG	4	OPERABLE	RE-PURPOSED WOOD WINDOWS
H3	30"	48"	SINGLE HUNG	2	OPERABLE	(E) WINDOW TO REMAIN, PRESERVED
H4	60"	48"	SINGLE HUNG	2	OPERABLE	(E) WINDOW TO REMAIN, PRESERVED
H5	28"	42"	SINGLE HUNG	2	OPERABLE	NEW WOOD-CLAD WINDOW
H6	70"	48"	GARDEN	5	FIXED	(E) WINDOW TO REMAIN, PRESERVED

PHASING LEGEND	
	(E) TO BE REMOVED / DEMOLISHED
	(E) TO REMAIN
	NEW



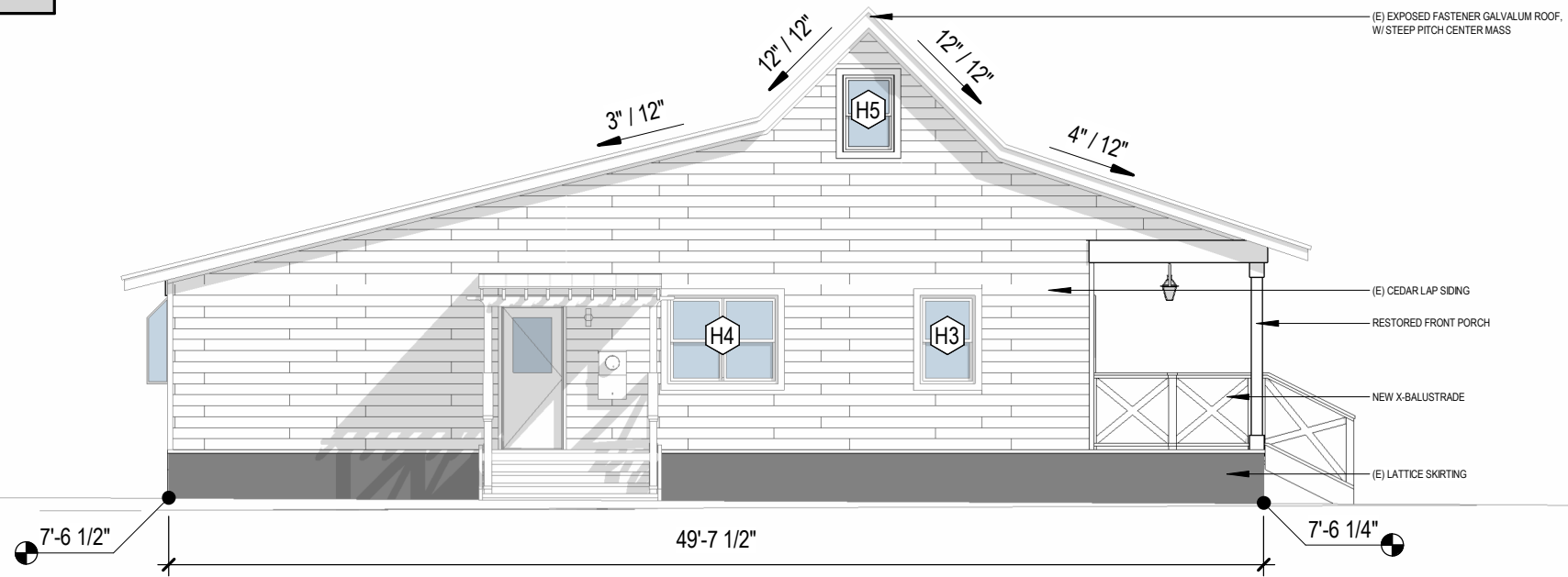
1 ELEVATION - SE - PROPOSED
SCALE: 1/8" = 1'-0"



2 ELEVATION - SE - EXISTING
SCALE: 1/8" = 1'-0"

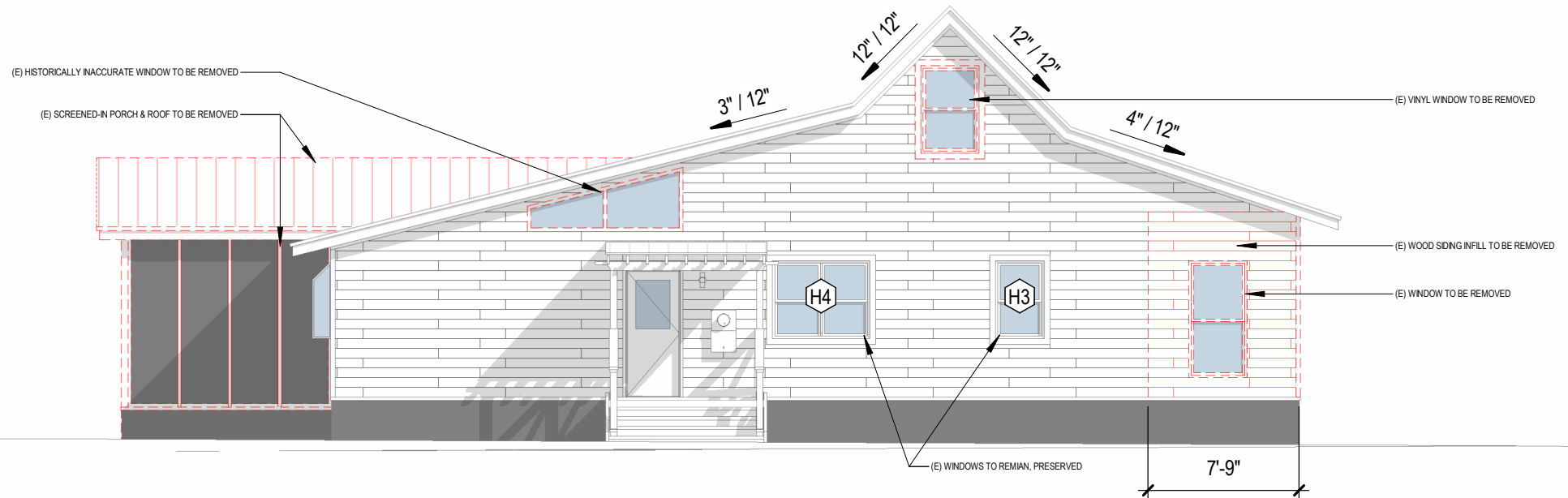
WINDOW SCHEDULE - HISTORIC COTTAGE						
TAG	WIDTH	HEIGHT	TYPE	LITES	FUNCTION	NOTES
H1	36"	54"	SINGLE HUNG	4	OPERABLE	RESTORATION GRADE, 2 OVER 2
H2	36"	54"	SINGLE HUNG	4	OPERABLE	RE-PURPOSED WOOD WINDOWS
H3	30"	48"	SINGLE HUNG	2	OPERABLE	(E) WINDOW TO REMAIN, PRESERVED
H4	60"	48"	SINGLE HUNG	2	OPERABLE	(E) WINDOW TO REMAIN, PRESERVED
H5	28"	42"	SINGLE HUNG	2	OPERABLE	NEW WOOD-CLAD WINDOW
H6	70"	48"	GARDEN	5	FIXED	(E) WINDOW TO REMAIN, PRESERVED

PHASING LEGEND	
	(E) TO BE REMOVED / DEMOLISHED
	(E) TO REMAIN
	NEW



1 ELEVATION - SW - PROPOSED

SCALE: 1/8" = 1'-0"

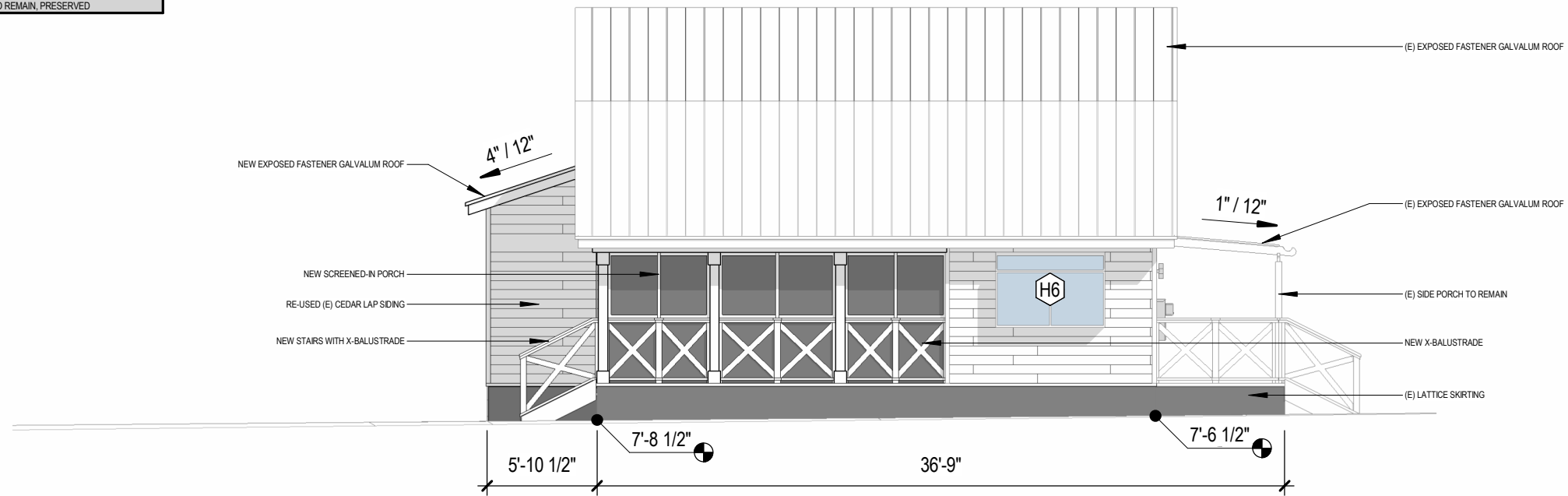


2 ELEVATION - SW - EXISTING

SCALE: 1/8" = 1'-0"

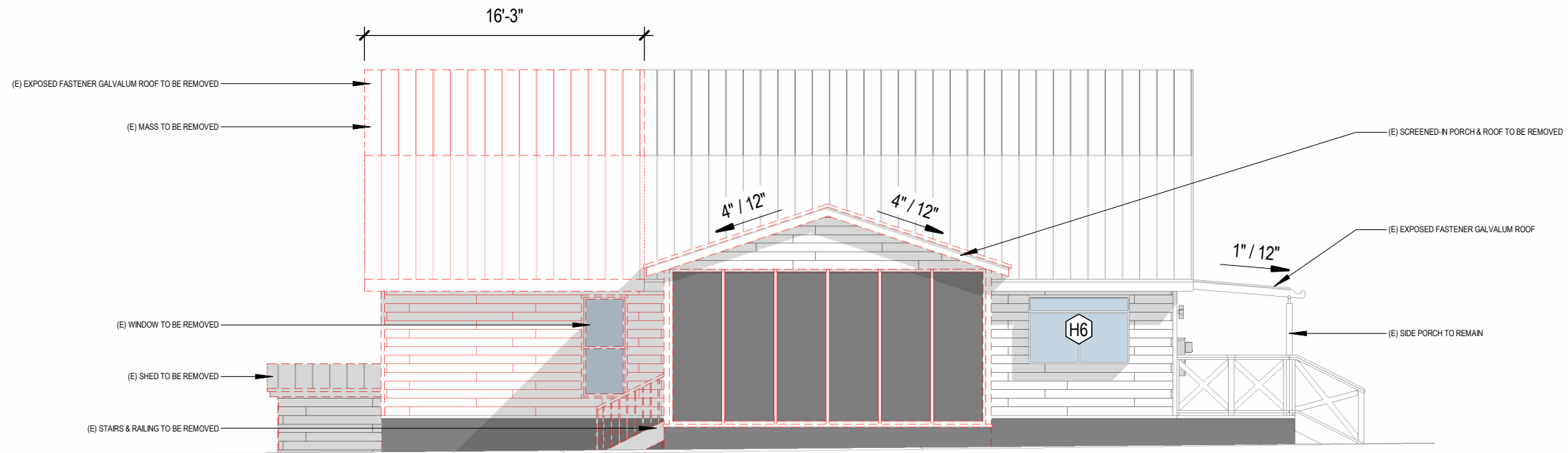
WINDOW SCHEDULE - HISTORIC COTTAGE						
TAG	WIDTH	HEIGHT	TYPE	LITES	FUNCTION	NOTES
H1	36"	54"	SINGLE HUNG	4	OPERABLE	RESTORATION GRADE, 2 OVER 2
H2	36"	54"	SINGLE HUNG	4	OPERABLE	RE-PURPOSED WOOD WINDOWS
H3	30"	48"	SINGLE HUNG	2	OPERABLE	(E) WINDOW TO REMAIN, PRESERVED
H4	60"	48"	SINGLE HUNG	2	OPERABLE	(E) WINDOW TO REMAIN, PRESERVED
H5	28"	42"	SINGLE HUNG	2	OPERABLE	NEW WOOD-CLAD WINDOW
H6	70"	48"	GARDEN	5	FIXED	(E) WINDOW TO REMAIN, PRESERVED

PHASING LEGEND	
	(E) TO BE REMOVED / DEMOLISHED
	(E) TO REMAIN
	NEW



1 ELEVATION - NW - PROPOSED

SCALE: 1/8" = 1'-0"

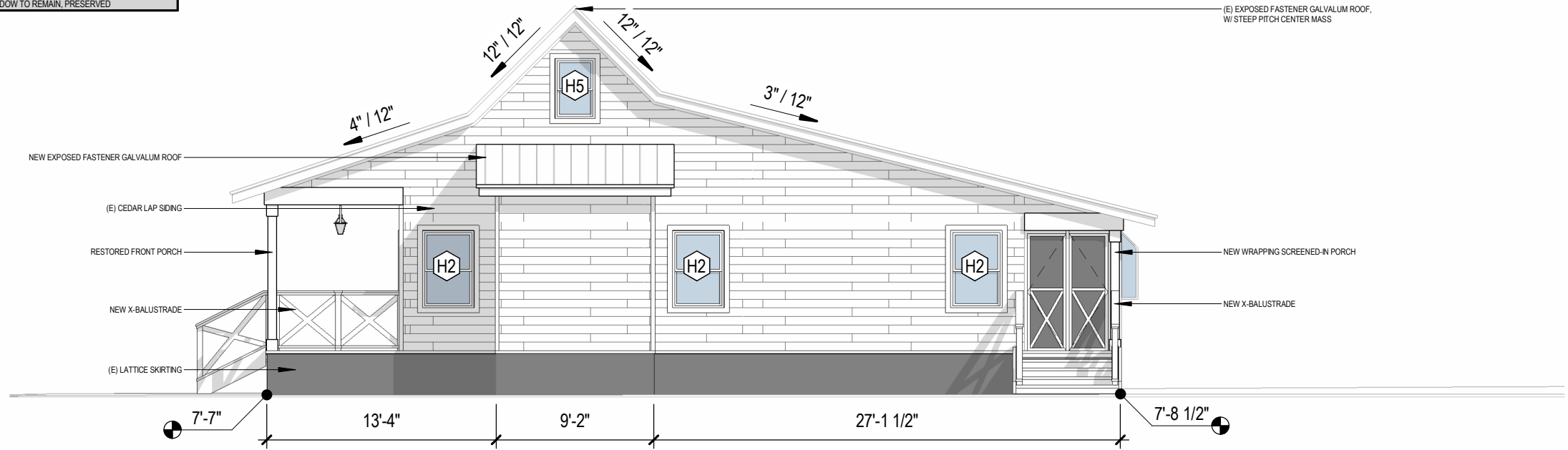


2 ELEVATION - NW - EXISTING

SCALE: 1/8" = 1'-0"

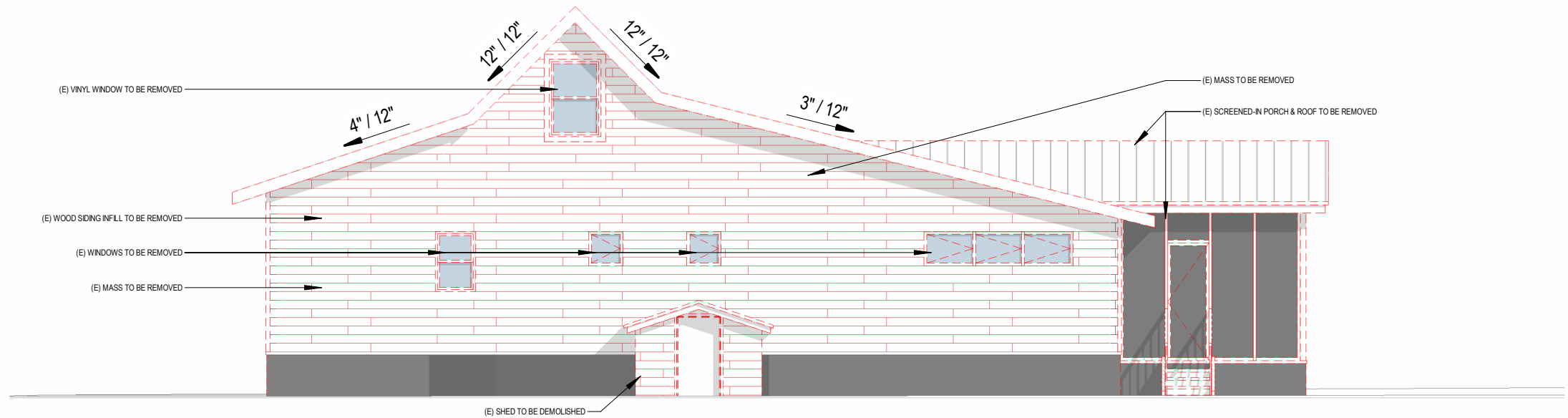
WINDOW SCHEDULE - HISTORIC COTTAGE						
TAG	WIDTH	HEIGHT	TYPE	LITES	FUNCTION	NOTES
H1	36"	54"	SINGLE HUNG	4	OPERABLE	RESTORATION GRADE, 2 OVER 2
H2	36"	54"	SINGLE HUNG	4	OPERABLE	RE-PURPOSED WOOD WINDOWS
H3	30"	48"	SINGLE HUNG	2	OPERABLE	(E) WINDOW TO REMAIN, PRESERVED
H4	60"	48"	SINGLE HUNG	2	OPERABLE	(E) WINDOW TO REMAIN, PRESERVED
H5	28"	42"	SINGLE HUNG	2	OPERABLE	NEW WOOD-CLAD WINDOW
H6	70"	48"	GARDEN	5	FIXED	(E) WINDOW TO REMAIN, PRESERVED

PHASING LEGEND	
	(E) TO BE REMOVED / DEMOLISHED
	(E) TO REMAIN
	NEW



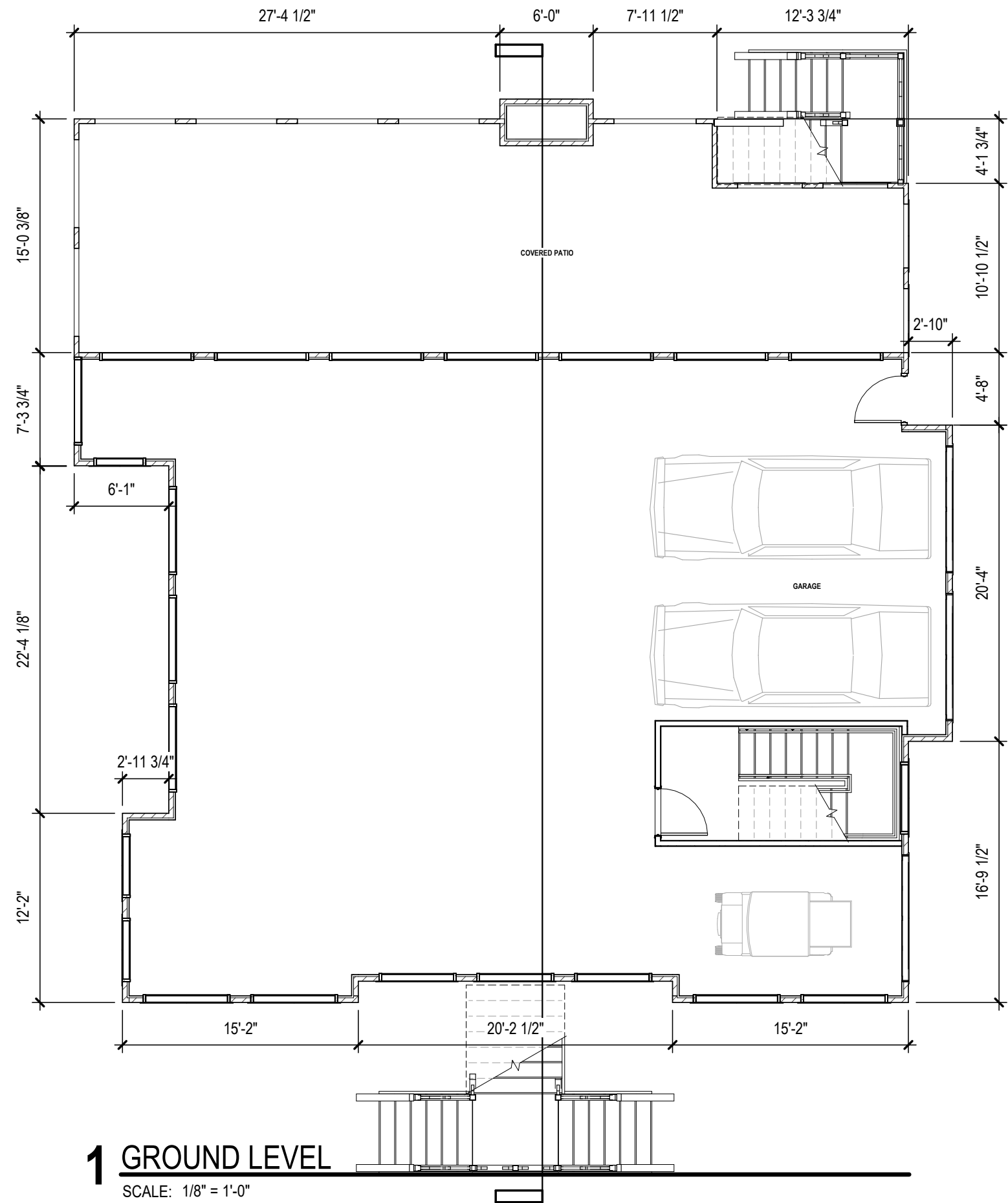
1 ELEVATION - NE - PROPOSED

SCALE: 1/8" = 1'-0"



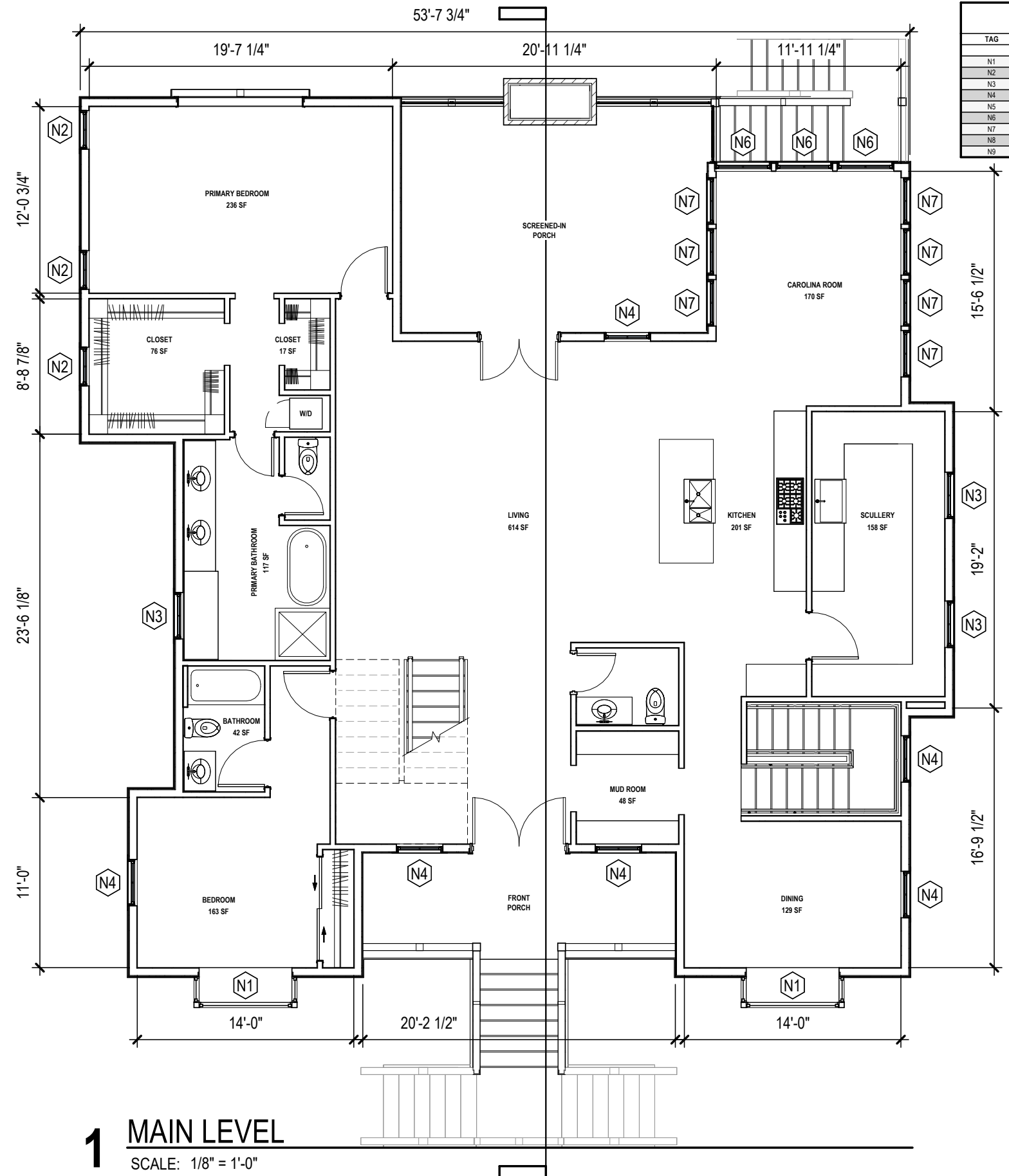
2 ELEVATION - NE - EXISTING

SCALE: 1/8" = 1'-0"



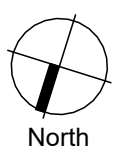
1 GROUND LEVEL
 SCALE: 1/8" = 1'-0"





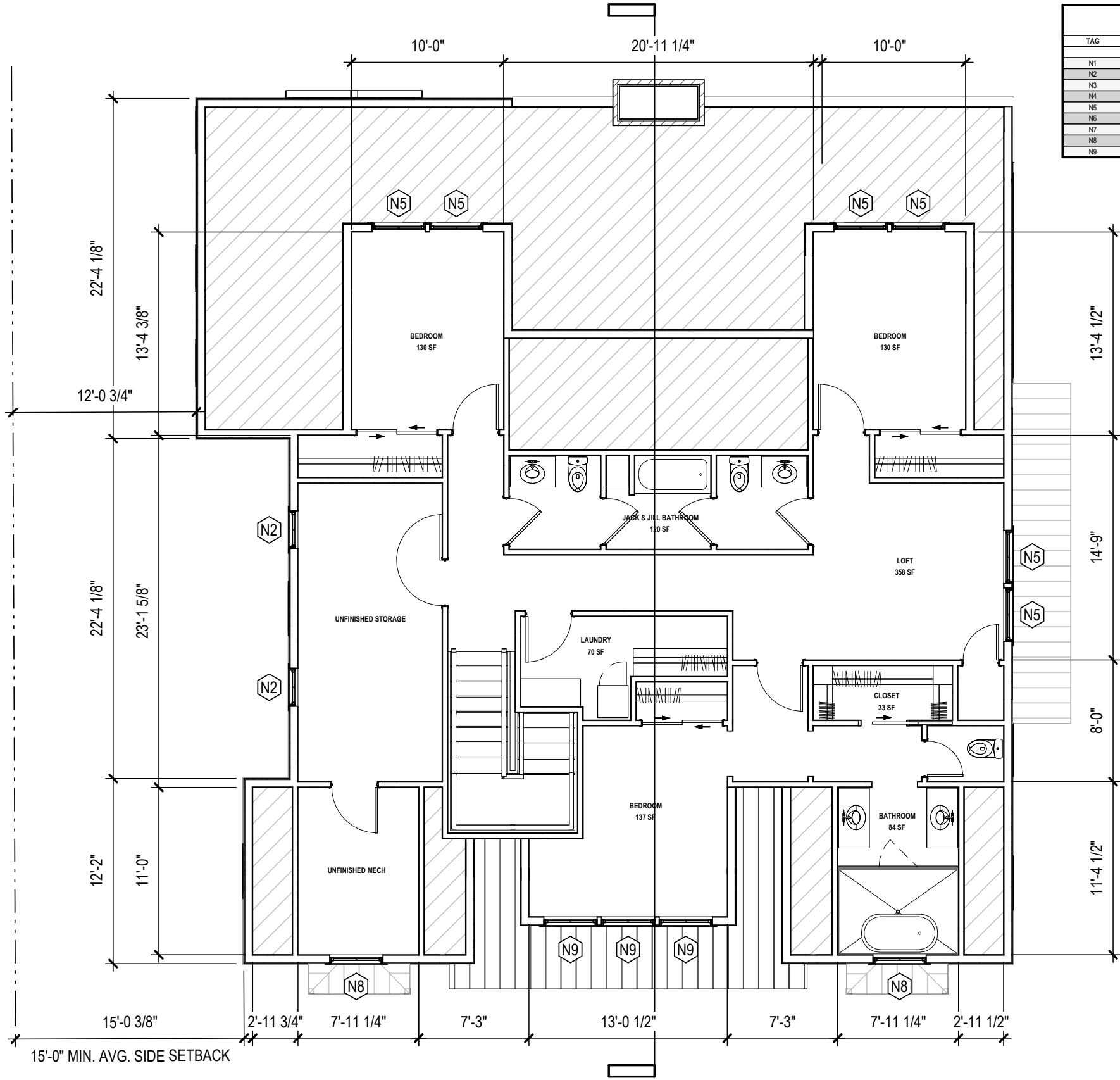
WINDOW SCHEDULE - NEW CONSTRUCTION						
TAG	WIDTH	HEIGHT	TYPE	LITES	FUNCTION	NOTES
N1	72"	72"	BAY	32	FIXED	NEW WOOD-CLAD BAY WINDOW
N2	30"	60"	SINGLE HUNG	4	OPERABLE	NEW WOOD-CLAD WINDOW
N3	36"	48"	SINGLE HUNG	4	OPERABLE	NEW WOOD-CLAD WINDOW
N4	36"	60"	SINGLE HUNG	4	OPERABLE	NEW WOOD-CLAD WINDOW
N5	42"	60"	SINGLE HUNG	4	OPERABLE	NEW WOOD-CLAD WINDOW
N6	44"	84"	SINGLE HUNG	4	OPERABLE	NEW WOOD-CLAD WINDOW
N7	36"	84"	SINGLE HUNG	4	OPERABLE	NEW WOOD-CLAD WINDOW
N8	42"	66"	SINGLE HUNG	4	OPERABLE	NEW WOOD-CLAD WINDOW
N9	42"	60"	SINGLE HUNG	4	OPERABLE	NEW WOOD-CLAD WINDOW

1 MAIN LEVEL
SCALE: 1/8" = 1'-0"



2025-01-17

WINDOW SCHEDULE - NEW CONSTRUCTION						
TAG	WIDTH	HEIGHT	TYPE	LITES	FUNCTION	NOTES
N1	72"	72"	BAY	32	FIXED	NEW WOOD-CLAD BAY WINDOW
N2	30"	60"	SINGLE HUNG	4	OPERABLE	NEW WOOD-CLAD WINDOW
N3	36"	48"	SINGLE HUNG	4	OPERABLE	NEW WOOD-CLAD WINDOW
N4	36"	60"	SINGLE HUNG	4	OPERABLE	NEW WOOD-CLAD WINDOW
N5	42"	60"	SINGLE HUNG	4	OPERABLE	NEW WOOD-CLAD WINDOW
N6	44"	84"	SINGLE HUNG	4	OPERABLE	NEW WOOD-CLAD WINDOW
N7	36"	84"	SINGLE HUNG	4	OPERABLE	NEW WOOD-CLAD WINDOW
N8	42"	66"	SINGLE HUNG	4	OPERABLE	NEW WOOD-CLAD WINDOW
N9	42"	60"	SINGLE HUNG	4	OPERABLE	NEW WOOD-CLAD WINDOW



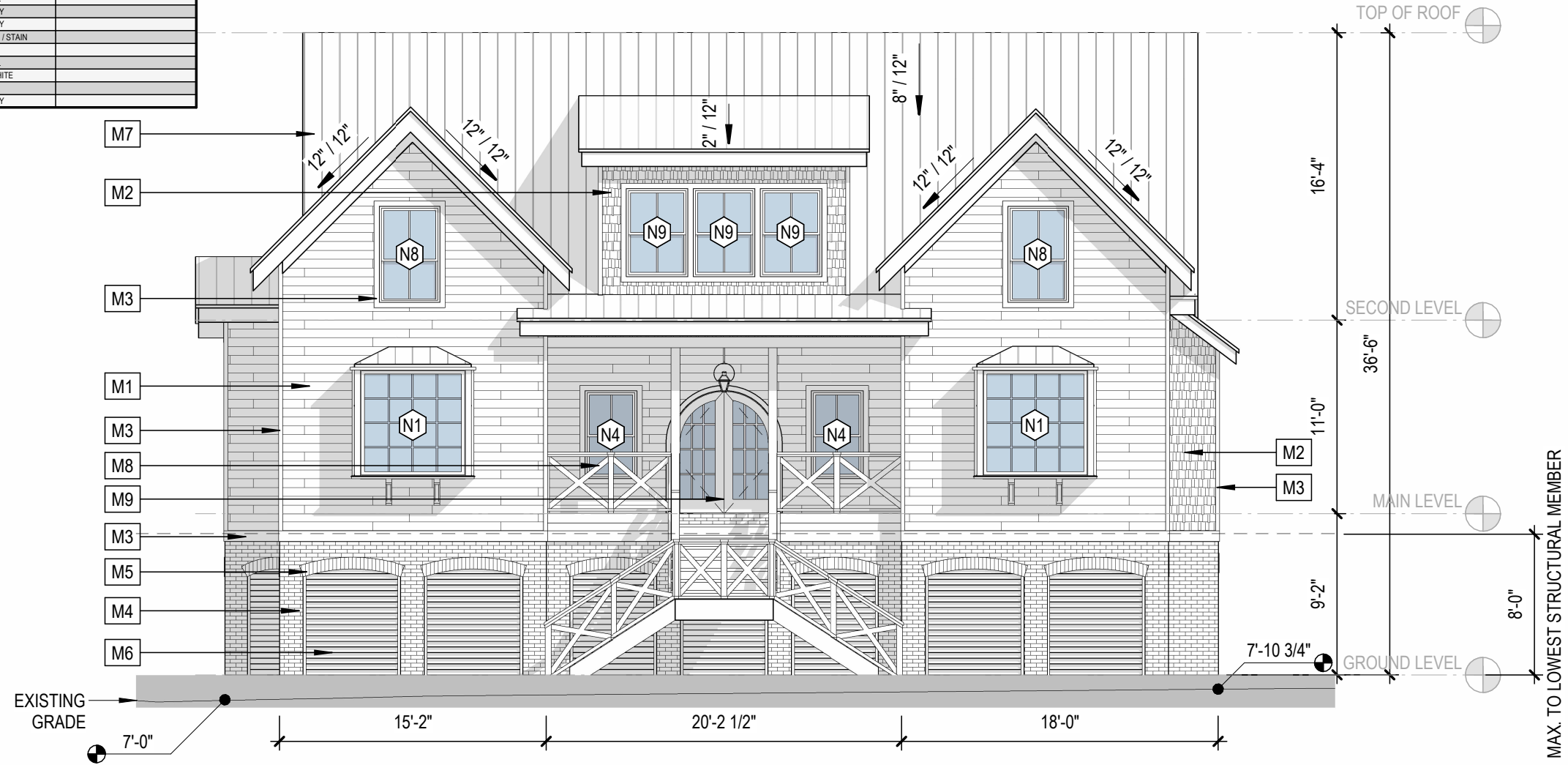
1 SECOND LEVEL
SCALE: 1/8" = 1'-0"



WINDOW SCHEDULE - NEW CONSTRUCTION						
TAG	WIDTH	HEIGHT	TYPE	LITES	FUNCTION	NOTES
N1	72"	72"	BAY	32	FIXED	NEW WOOD-CLAD BAY WINDOW
N2	30"	60"	SINGLE HUNG	4	OPERABLE	NEW WOOD-CLAD WINDOW
N3	36"	48"	SINGLE HUNG	4	OPERABLE	NEW WOOD-CLAD WINDOW
N4	36"	60"	SINGLE HUNG	4	OPERABLE	NEW WOOD-CLAD WINDOW
N5	42"	60"	SINGLE HUNG	4	OPERABLE	NEW WOOD-CLAD WINDOW
N6	44"	84"	SINGLE HUNG	4	OPERABLE	NEW WOOD-CLAD WINDOW
N7	36"	84"	SINGLE HUNG	4	OPERABLE	NEW WOOD-CLAD WINDOW
N8	42"	66"	SINGLE HUNG	4	OPERABLE	NEW WOOD-CLAD WINDOW
N9	42"	60"	SINGLE HUNG	4	OPERABLE	NEW WOOD-CLAD WINDOW

MATERIAL SCHEDULE - NEW CONSTRUCTION			
TAG	DESCRIPTION	COLOR	COMMENTS
M1	JAMES HARDIE PLANK LAP SIDING	OYSTER WHITE	
M2	JAMES HARDIE SHINGLE, STRAIGHT EDGE PANEL	OYSTER WHITE	
M3	JAMES HARDIE TRIM	OYSTER WHITE	
M4	OLD MILL THIN BRICK, FIELD, MODULAR	CITADEL	
M5	OLD MILL THIN BRICK, SEGMENTAL ARCH, MODULAR	CITADEL	
M6	HORIZONTAL SLAT LOUVER, WOOD, PAINTED	ASH GREY	
M7	PRE-FINISHED STANDING SEAM METAL ROOF	ASH GREY	
M8	X-BALUSTRADE W/ STAINED WOOD TOP RAIL	OYSTER WHITE / STAIN	
M9	ARCH TOP 2 PANEL FRENCH DOORS	STAIN	
M10	OLD MILL THIN BRICK, BISHOPS ARCH CHIMNEY, MODULAR	CITADEL	
M11	SCREENED-IN PORCH	OYSTER WHITE	
M12	4 PANEL FRENCH DOORS	STAIN	
M13	BOARD AND BATTEN SECTIONAL GARAGE DOOR	ASH GREY	

ELEVATION CLARIFICATIONS	
BASE FLOOD ELEVATION	10'
DESIGN FLOOD ELEVATION (BASE ELEVATION + 1)	11'
PROPOSED FINISHED GRADE	8.5'

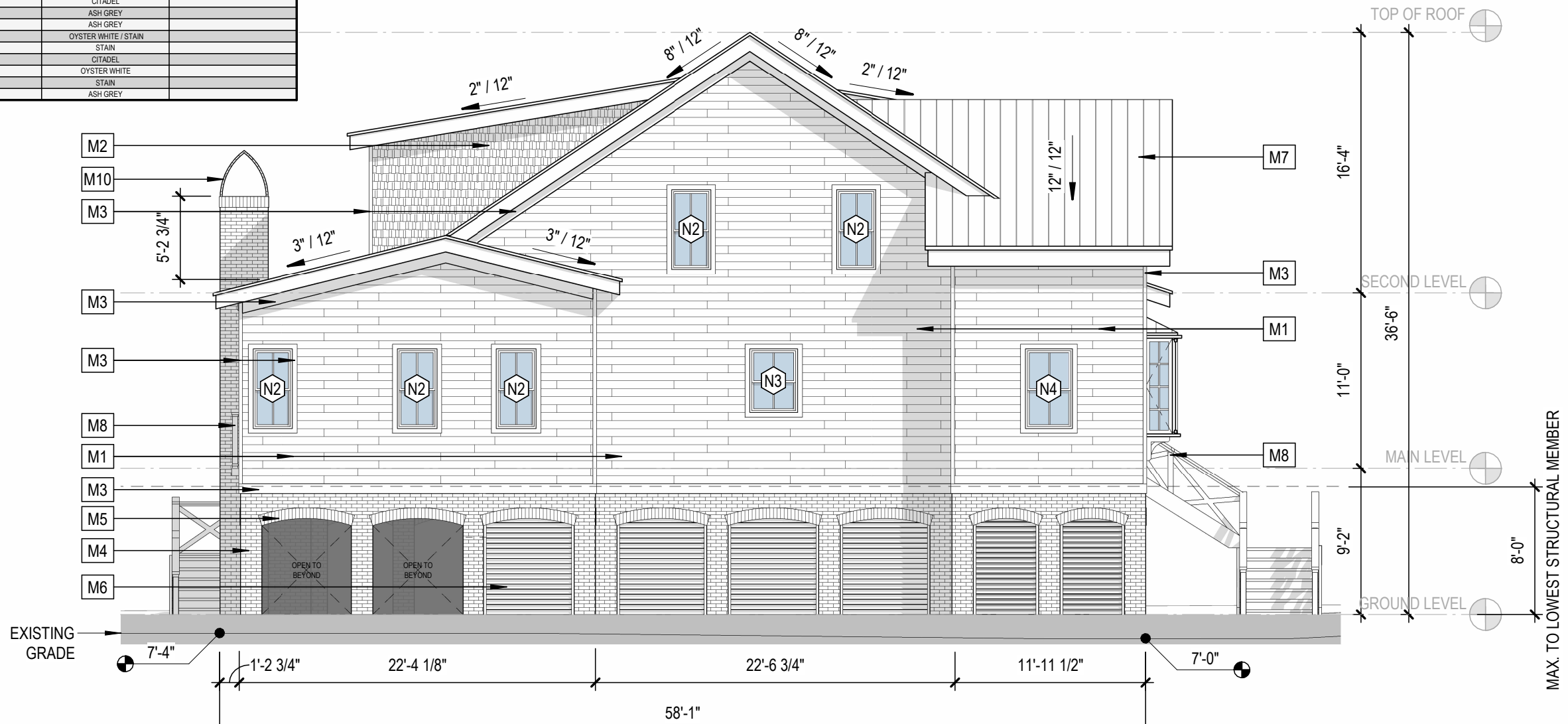


1 ELEVATION - NW - PROPOSED
SCALE: 1/8" = 1'-0"

WINDOW SCHEDULE - NEW CONSTRUCTION						
TAG	WIDTH	HEIGHT	TYPE	LITES	FUNCTION	NOTES
N1	72"	72"	BAY	32	FIXED	NEW WOOD-CLAD BAY WINDOW
N2	30"	60"	SINGLE HUNG	4	OPERABLE	NEW WOOD-CLAD WINDOW
N3	36"	48"	SINGLE HUNG	4	OPERABLE	NEW WOOD-CLAD WINDOW
N4	36"	60"	SINGLE HUNG	4	OPERABLE	NEW WOOD-CLAD WINDOW
N5	42"	60"	SINGLE HUNG	4	OPERABLE	NEW WOOD-CLAD WINDOW
N6	44"	84"	SINGLE HUNG	4	OPERABLE	NEW WOOD-CLAD WINDOW
N7	36"	84"	SINGLE HUNG	4	OPERABLE	NEW WOOD-CLAD WINDOW
N8	42"	42"	SINGLE HUNG	4	OPERABLE	NEW WOOD-CLAD WINDOW
N9	42"	60"	SINGLE HUNG	4	OPERABLE	NEW WOOD-CLAD WINDOW

MATERIAL SCHEDULE - NEW CONSTRUCTION			
TAG	DESCRIPTION	COLOR	COMMENTS
M1	JAMES HARDIE PLANK LAP SIDING	OYSTER WHITE	
M2	JAMES HARDIE SHINGLE, STRAIGHT EDGE PANEL	OYSTER WHITE	
M3	JAMES HARDIE TRIM	OYSTER WHITE	
M4	OLD MILL THIN BRICK, FIELD, MODULAR	CITADEL	
M5	OLD MILL THIN BRICK, SEGMENTAL ARCH, MODULAR	CITADEL	
M6	HORIZONTAL SLAT LOUVER, WOOD, PAINTED	ASH GREY	
M7	PRE-FINISHED STANDING SEAM METAL ROOF	ASH GREY	
M8	X-BALUSTRADE W/ STAINED WOOD TOP RAIL	OYSTER WHITE / STAIN	
M9	ARCH TOP 2 PANEL FRENCH DOORS	STAIN	
M10	OLD MILL THIN BRICK, BISHOPS ARCH CHIMNEY, MODULAR	CITADEL	
M11	SCREENED-IN PORCH	OYSTER WHITE	
M12	4 PANEL FRENCH DOORS	STAIN	
M13	BOARD AND BATTEN SECTIONAL GARAGE DOOR	ASH GREY	

ELEVATION CLARIFICATIONS	
BASE FLOOD ELEVATION	10'
DESIGN FLOOD ELEVATION (BASE ELEVATION + 1)	11'
PROPOSED FINISHED GRADE	8.5'

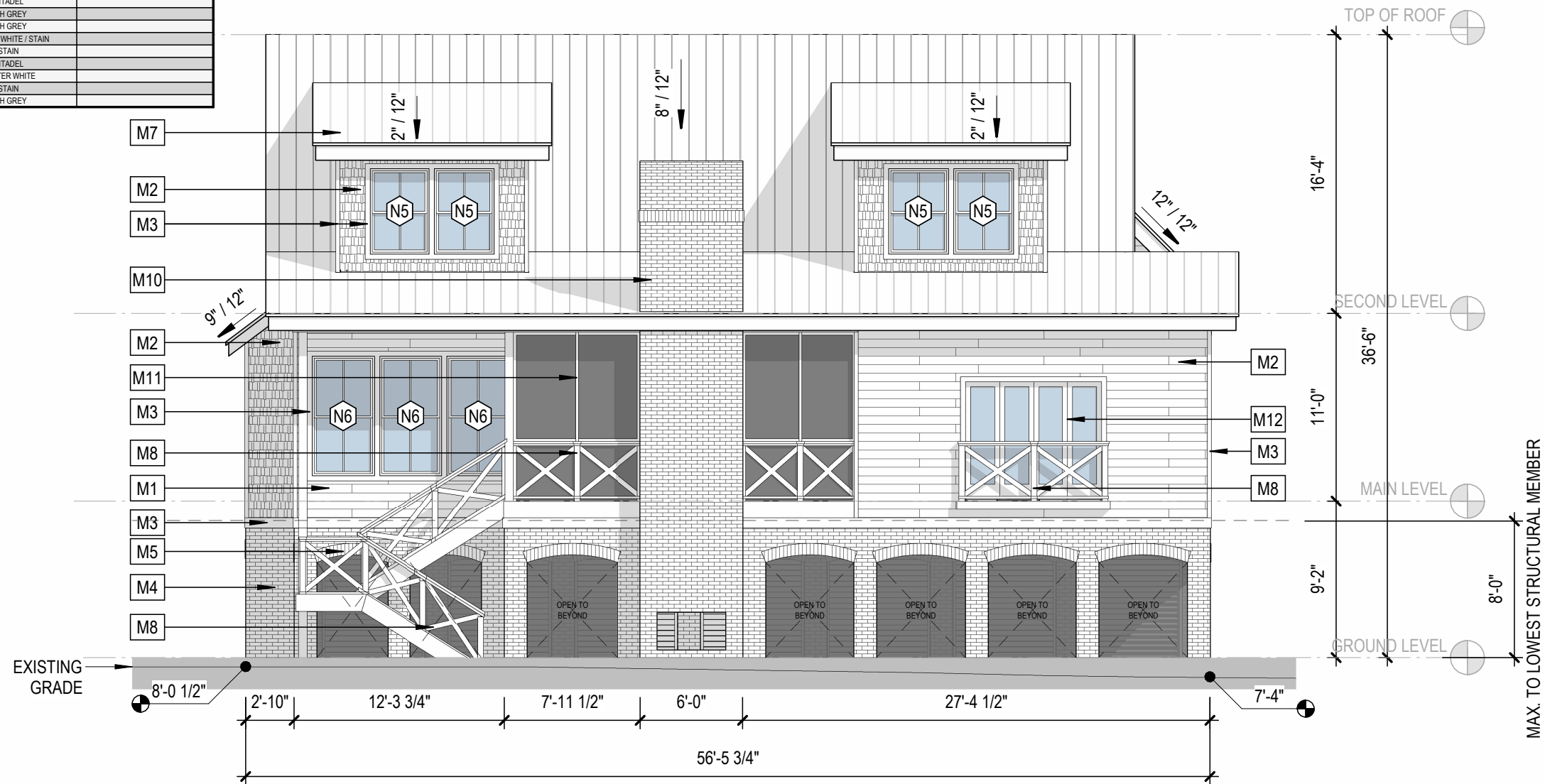


1 ELEVATION - NE - PROPOSED
SCALE: 1/8" = 1'-0"

WINDOW SCHEDULE - NEW CONSTRUCTION						
TAG	WIDTH	HEIGHT	TYPE	LITES	FUNCTION	NOTES
N1	72"	72"	BAY	32	FIXED	NEW WOOD-CLAD BAY WINDOW
N2	30"	60"	SINGLE HUNG	4	OPERABLE	NEW WOOD-CLAD WINDOW
N3	36"	48"	SINGLE HUNG	4	OPERABLE	NEW WOOD-CLAD WINDOW
N4	36"	60"	SINGLE HUNG	4	OPERABLE	NEW WOOD-CLAD WINDOW
N5	42"	60"	SINGLE HUNG	4	OPERABLE	NEW WOOD-CLAD WINDOW
N6	44"	84"	SINGLE HUNG	4	OPERABLE	NEW WOOD-CLAD WINDOW
N7	36"	84"	SINGLE HUNG	4	OPERABLE	NEW WOOD-CLAD WINDOW
N8	42"	66"	SINGLE HUNG	4	OPERABLE	NEW WOOD-CLAD WINDOW
N9	42"	60"	SINGLE HUNG	4	OPERABLE	NEW WOOD-CLAD WINDOW

MATERIAL SCHEDULE - NEW CONSTRUCTION			
TAG	DESCRIPTION	COLOR	COMMENTS
M1	JAMES HARDIE PLANK LAP SIDING	OYSTER WHITE	
M2	JAMES HARDIE SHINGLE, STRAIGHT EDGE PANEL	OYSTER WHITE	
M3	JAMES HARDIE TRIM	OYSTER WHITE	
M4	OLD MILL THIN BRICK, FIELD, MODULAR	CITADEL	
M5	OLD MILL THIN BRICK, SEGMENTAL ARCH, MODULAR	CITADEL	
M6	HORIZONTAL SLAT LOUVER, WOOD, PAINTED	ASH GREY	
M7	PRE-FINISHED STANDING SEAM METAL ROOF	ASH GREY	
M8	X-BALUSTRADE W/ STAINED WOOD TOP RAIL	OYSTER WHITE / STAIN	
M9	ARCH TOP 2 PANEL FRENCH DOORS	STAIN	
M10	OLD MILL THIN BRICK, BISHOPS ARCH CHIMNEY, MODULAR	CITADEL	
M11	SCREENED-IN PORCH	OYSTER WHITE	
M12	4 PANEL FRENCH DOORS	STAIN	
M13	BOARD AND BATTEN SECTIONAL GARAGE DOOR	ASH GREY	

ELEVATION CLARIFICATIONS	
BASE FLOOD ELEVATION	10'
DESIGN FLOOD ELEVATION (BASE ELEVATION + 1')	11'
PROPOSED FINISHED GRADE	8.5'

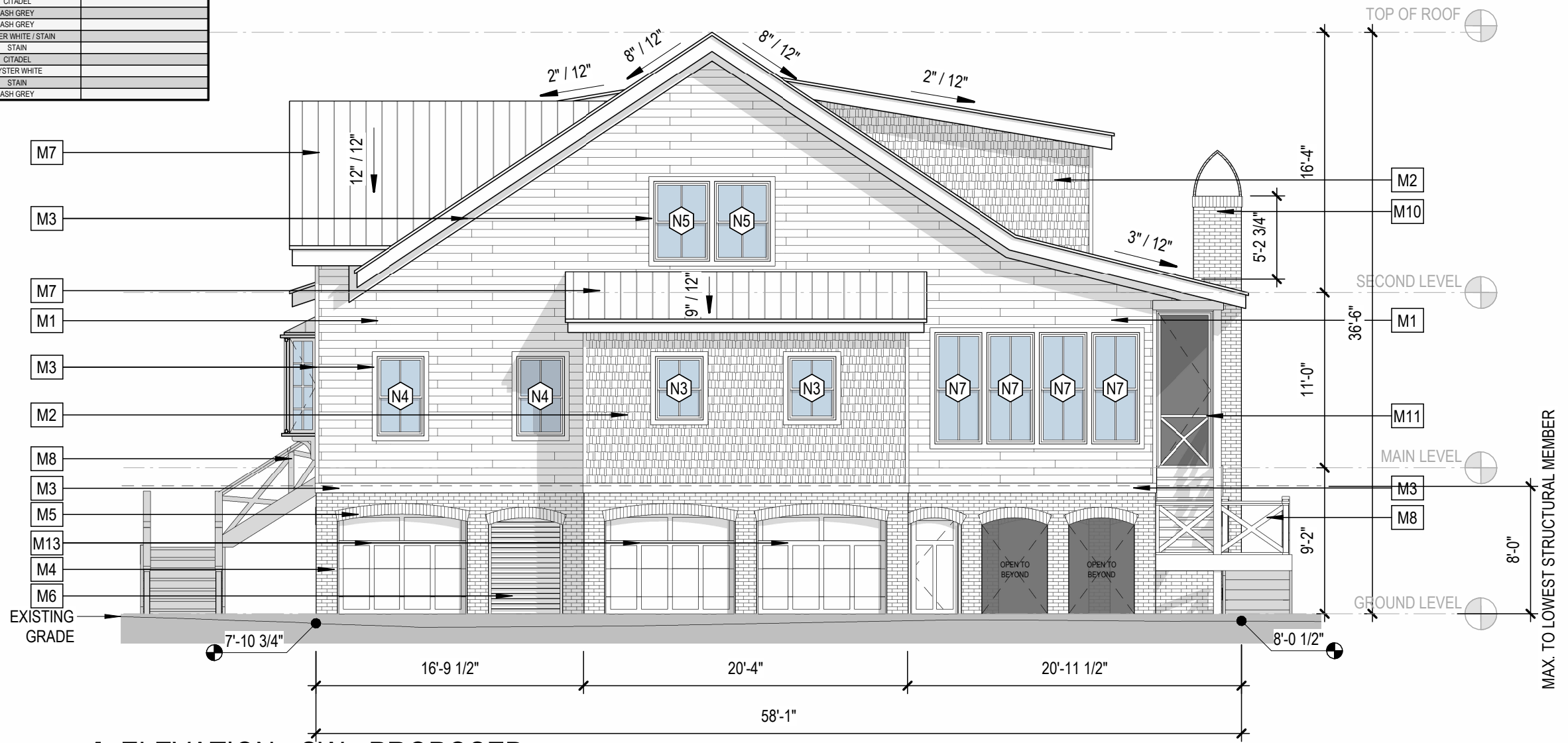


1 ELEVATION - SE - PROPOSED
SCALE: 1/8" = 1'-0"

WINDOW SCHEDULE - NEW CONSTRUCTION						
TAG	WIDTH	HEIGHT	TYPE	LITES	FUNCTION	NOTES
N1	72"	72"	BAY	32	FIXED	NEW WOOD-CLAD BAY WINDOW
N2	30"	60"	SINGLE HUNG	4	OPERABLE	NEW WOOD-CLAD WINDOW
N3	36"	48"	SINGLE HUNG	4	OPERABLE	NEW WOOD-CLAD WINDOW
N4	36"	60"	SINGLE HUNG	4	OPERABLE	NEW WOOD-CLAD WINDOW
N5	42"	60"	SINGLE HUNG	4	OPERABLE	NEW WOOD-CLAD WINDOW
N6	44"	84"	SINGLE HUNG	4	OPERABLE	NEW WOOD-CLAD WINDOW
N7	36"	84"	SINGLE HUNG	4	OPERABLE	NEW WOOD-CLAD WINDOW
N8	42"	66"	SINGLE HUNG	4	OPERABLE	NEW WOOD-CLAD WINDOW
N9	42"	60"	SINGLE HUNG	4	OPERABLE	NEW WOOD-CLAD WINDOW

MATERIAL SCHEDULE - NEW CONSTRUCTION			
TAG	DESCRIPTION	COLOR	COMMENTS
M1	JAMES HARDIE PLANK LAP SIDING	OYSTER WHITE	
M2	JAMES HARDIE SHINGLE, STRAIGHT EDGE PANEL	OYSTER WHITE	
M3	JAMES HARDIE TRIM	OYSTER WHITE	
M4	OLD MILL THIN BRICK, FIELD, MODULAR	CITADEL	
M5	OLD MILL THIN BRICK, SEGMENTAL ARCH, MODULAR	CITADEL	
M6	HORIZONTAL SLAT LOUVER, WOOD, PAINTED	ASH GREY	
M7	PRE-FINISHED STANDING SEAM METAL ROOF	ASH GREY	
M8	X-BALUSTRADE W/ STAINED WOOD TOP RAIL	OYSTER WHITE / STAIN	
M9	ARCH TOP 2 PANEL FRENCH DOORS	STAIN	
M10	OLD MILL THIN BRICK, BISHOPS ARCH CHIMNEY, MODULAR	CITADEL	
M11	SCREENED-IN PORCH	OYSTER WHITE	
M12	4 PANEL FRENCH DOORS	STAIN	
M13	BOARD AND BATTEN SECTIONAL GARAGE DOOR	ASH GREY	

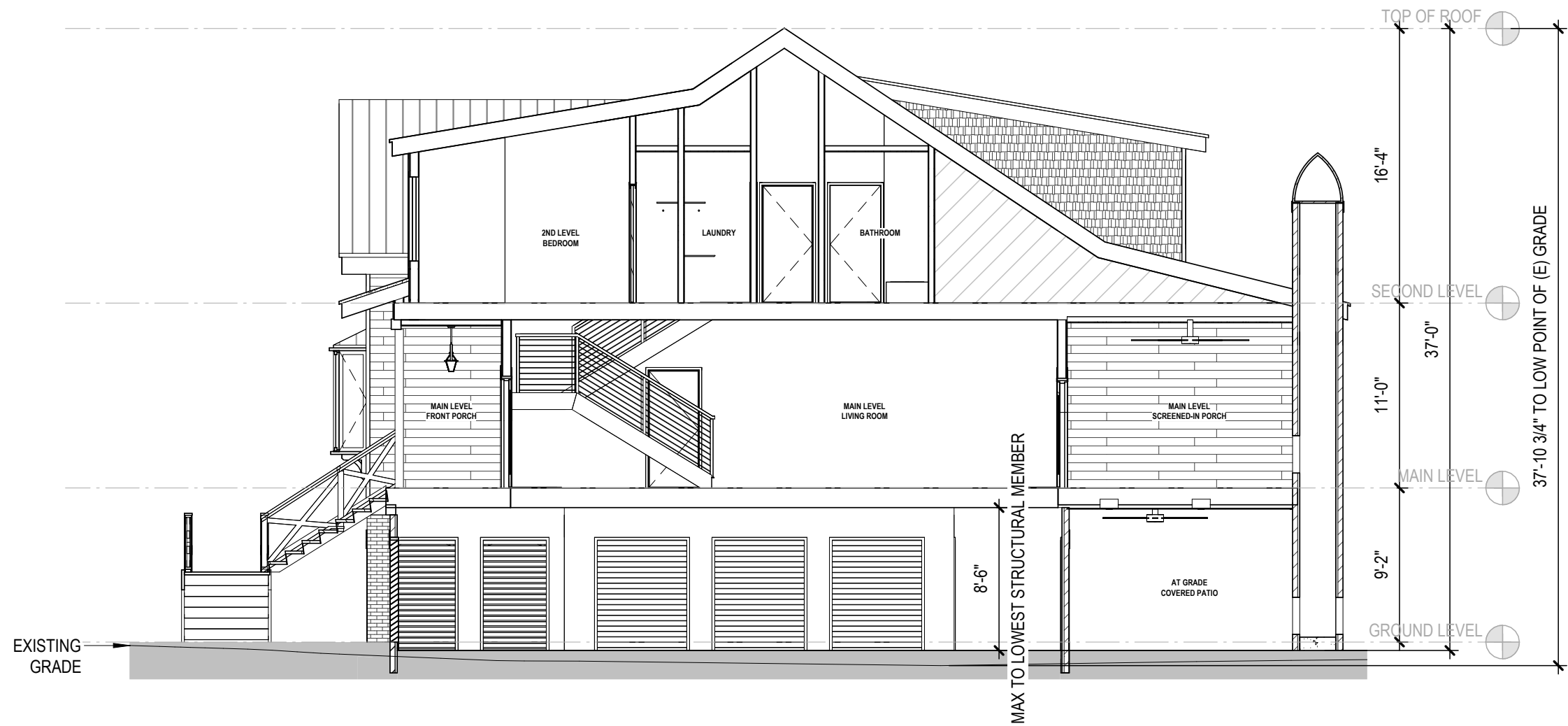
ELEVATION CLARIFICATIONS	
BASE FLOOD ELEVATION	10'
DESIGN FLOOD ELEVATION (BASE ELEVATION + 1)	11'
PROPOSED FINISHED GRADE	8.5'



1 ELEVATION - SW - PROPOSED
SCALE: 1/8" = 1'-0"

ELEVATION CLARIFICATIONS

BASE FLOOD ELEVATION	10'
DESIGN FLOOD ELEVATION (BASE ELEVATION + 1')	11'
PROPOSED FINISHED GRADE	8.5'



1 SECTION - LONGITUDINAL - PROPOSED

SCALE: 1/8" = 1'-0"



NEW CONSTRUCTION - FRONT PERSPECTIVE



HISTORIC COTTAGE - FRONT PERSPECTIVE

NEW CONSTRUCTION - REAR PERSPECTIVE



HISTORIC COTTAGE - REAR PERSPECTIVE





2602 MYRTLE AVE

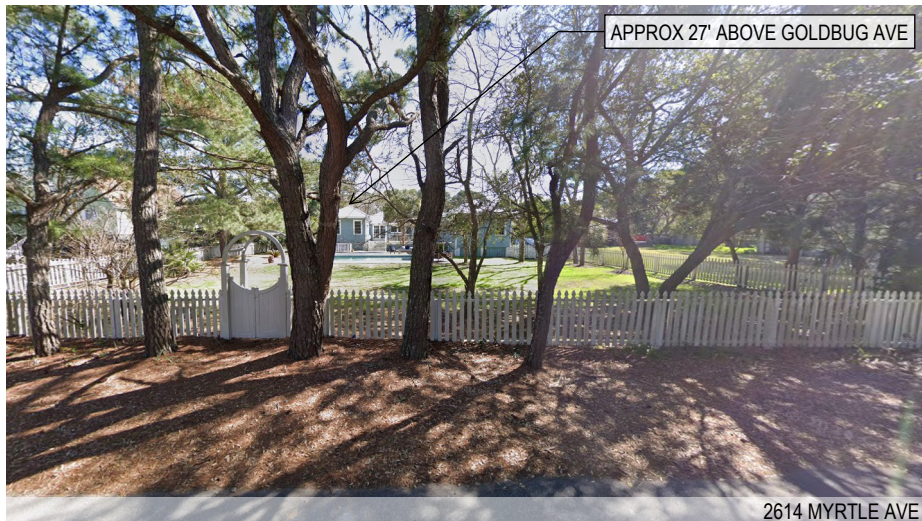


2608 MYRTLE AVE



2614 MYRTLE AVE

MYRTLE AVE STREETScape



APPROX 27' ABOVE GOLDBUG AVE

2614 MYRTLE AVE



2608 MYRTLE AVE



APPROX 44' ABOVE GOLDBUG AVE

2602 MYRTLE AVE

GOLDBUG AVE STREETScape



APPROX 25' ABOVE GOLDBUG AVE

2602 GOLDBUG AVE



APPROX 51' ABOVE GOLDBUG AVE
(HIGHEST ELEV. ON BLOCK ON GOLDBUG AVE W/ 3RD FL)

2608 GOLDBUG AVE



APPROX 40' ABOVE GOLDBUG AVE

2614 GOLDBUG AVE

GOLDBUG AVE STREETScape - ACROSS STREET