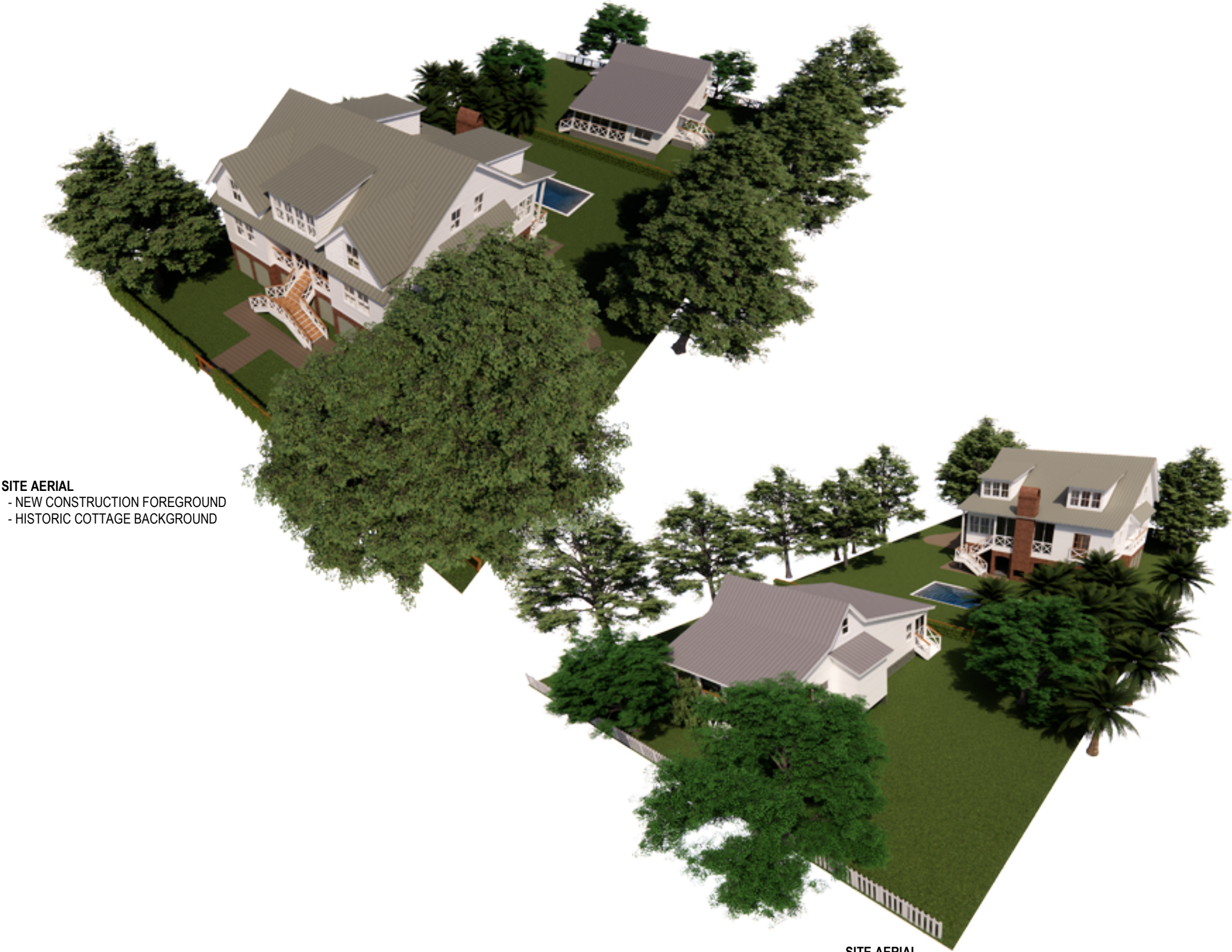


DRAWING INDEX	
SHEET	SHEET NAME
A-000	COVER
A-100	SURVEY
A-101	EXISTING SITE PLAN
A-102	PROPOSED SITE PLAN
A-103	PROPOSED SITE FLOOR PLAN
HC-A-201	HISTORIC COTTAGE - CURRENT FLOOR PLAN
HC-A-202	HISTORIC COTTAGE - PROPOSED FLOOR PLAN
HC-A-203	HISTORIC COTTAGE - CURRENT ATTIC PLAN
HC-A-204	HISTORIC COTTAGE - PROPOSED ATTIC PLAN
HC-A-701	HISTORIC COTTAGE - EXTERIOR ELEVATIONS
HC-A-702	HISTORIC COTTAGE - EXTERIOR ELEVATIONS
HC-A-703	HISTORIC COTTAGE - EXTERIOR ELEVATIONS
HC-A-704	HISTORIC COTTAGE - EXTERIOR ELEVATIONS
NC-A-200	NEW CONSTRUCTION - GROUND LEVEL PLAN
NC-A-201	NEW CONSTRUCTION - MAIN LEVEL FLOOR PLAN
NC-A-202	NEW CONSTRUCTION - SECOND LEVEL FLOOR PLAN
NC-A-701	NEW CONSTRUCTION - EXTERIOR ELEVATIONS
NC-A-702	NEW CONSTRUCTION - EXTERIOR ELEVATIONS
NC-A-703	NEW CONSTRUCTION - EXTERIOR ELEVATIONS
NC-A-704	NEW CONSTRUCTION - EXTERIOR ELEVATIONS
NC-A-801	NEW CONSTRUCTION - BUILDING SECTION
NC-A-802	NEW CONSTRUCTION - DETAILS
A-901	PERSPECTIVES
A-902	STREETSCAPE

SITE STATISTICS	
2608 MYRTLE AVE	
LOT 86 EAST, ATLANTICVILLE	
LOT SIZE	22,026 SF (.51 ACRES)
PRINCIPAL BUILDING AREA - STANDARD	4,102 SF
PRINCIPAL BUILDING AREA - PROPOSED	5,123 SF
HISTORIC DWELLING	1,199 SF
PROPOSED DWELLING	3,924 SF
PRINCIPAL BUILDING COVERAGE - STANDARD	3,304 SF
PRINCIPAL BUILDING COVERAGE - PROPOSED	3,522 SF
HISTORIC DWELLING	1,199 SF
PROPOSED DWELLING	2,323 SF
IMPERVIOUS COVERAGE - ALLOWABLE	6,607 SF
IMPERVIOUS COVERAGE - PROPOSED	5,331 SF
HISTORIC DWELLING	1,689 SF
PROPOSED DWELLING	3,130 SF
PROPOSED SWIMMING POOL AREA	512 SF



SITE AERIAL
- NEW CONSTRUCTION FOREGROUND
- HISTORIC COTTAGE BACKGROUND

SITE AERIAL
- HISTORIC COTTAGE FOREGROUND
- NEW CONSTRUCTION BACKGROUND

1. PROPERTY APPEARS IN FLOOD ZONE AE, EL. 10' ON FEMA COMMUNITY-FIELD NUMBER 4501900539K, MAP REVISION JANUARY 29, 2021.
2. THE BEARINGS SHOWN ARE MAGNETIC AND SUBJECT TO LOCAL ATTRACTION.
3. ANYTHING SHOWN OUTSIDE OF THE DEFINED BOUNDARY IS FOR DESCRIPTIVE PURPOSES ONLY.
4. THIS SURVEY IS BASED ON THE REFERENCE SHOWN AND DOES NOT CONSTITUTE A TITLE SEARCH.
5. ALL TREES & DIAMETER AT BREAST HEIGHT AND LARGER SHOWN HEREIN.

LEGEND:

- RAUROAD SPIKE FOUND, OLD.
- T PINCHED TOP PIPE FOUND, OLD.
- REBAR FOUND, OLD.
- MAGNAIL SET
- POWER POLE
- COT WIRE
- 16" DIAMETER
- 18" DIAMETER AT BREAST HEIGHT
- 11" CEDAR DIAMETER AT BREAST HEIGHT
- 16" HACKBERRY DIAMETER AT BREAST HEIGHT
- 15' LIVE OAK DIAMETER AT BREAST HEIGHT
- 6" OAK DIAMETER AT BREAST HEIGHT
- 11"x11" DOUBLE OAK DIAMETER AT BREAST HEIGHT
- 6"x7's 16" CEDAR C&S DIAMETER AT BREAST HEIGHT
- SPOT ELEVATION 8.0' M.S.L. NAVD83
- 8" CONTOUR LINE
- UNDERGROUND WATER LINE



MAGNETIC NAIL & CAP
ELEV. = 8.8' NAVD83

GOLDBUG AVENUE (40' R/W)



OF LOT 86 EAST, ATLANTICVILLE,
TOWN OF SULLIVAN'S ISLAND, CHARLESTON COUNTY, SOUTH CAROLINA.
PRESENTLY OWNED BY 806282 TRUST.



SCALE: 1" = 20'
DATE: AUGUST 11, 2015
REV: SEPTEMBER 13, 2021
REV: AUGUST 29, 2024
REF: PLAT BK. "E", PG. 043
TMS: 529-06-00-051

ALEXANDER C. PEABODY, PLS
PEABODY & ASSOCIATES, INC.
PROFESSIONAL LAND SURVEYING
P.O. BOX 22646, CHARLESTON, SC 29413
OFFICE 843-723-5225 MOBILE 843-270-4877

CHARLESTON COUNTY
SOUTH CAROLINA



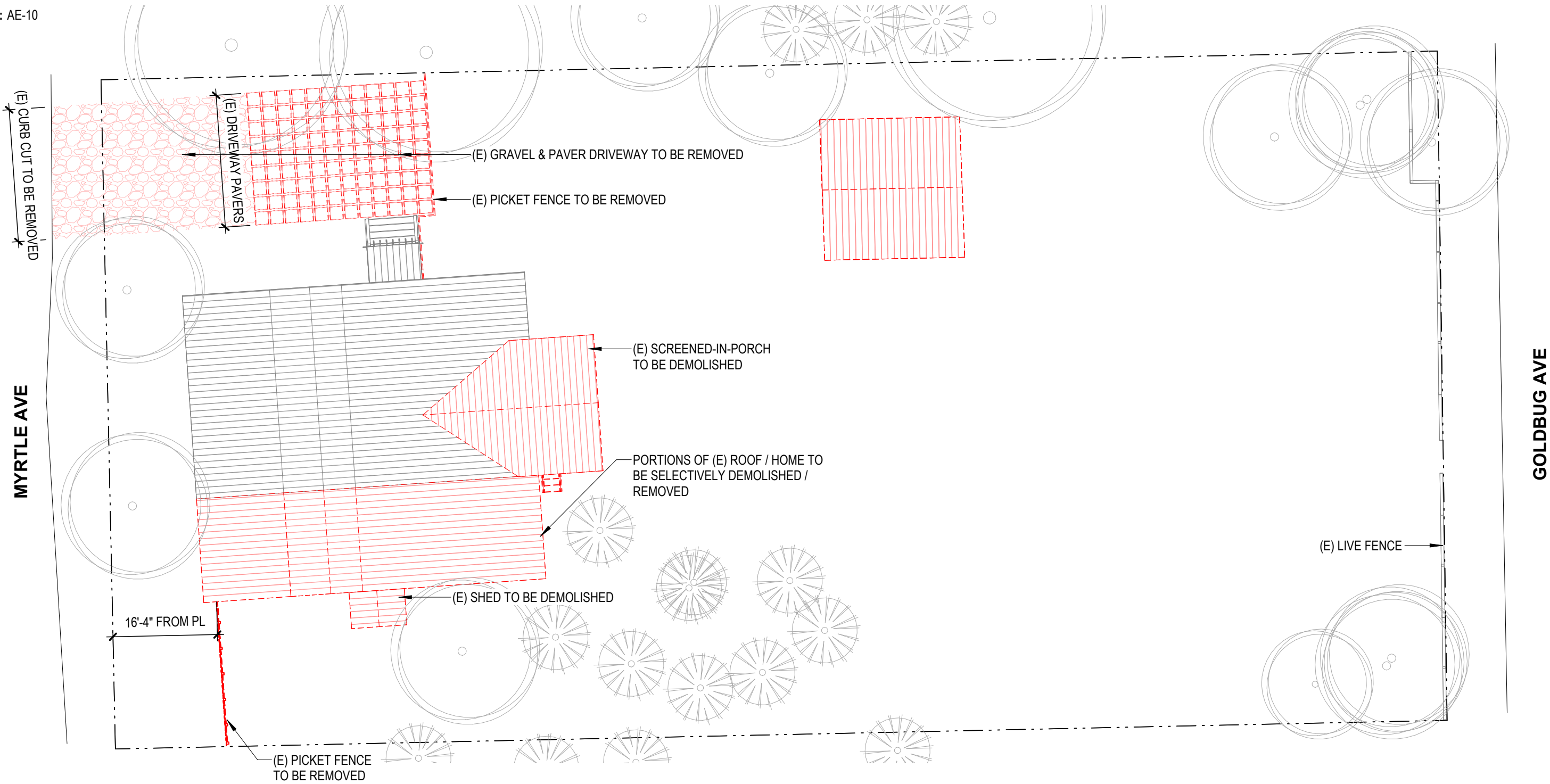
PRIVATE RESIDENCE
2608 MYRTLE AVE, SULLIVANS ISLAND, SC 29482

2608 MYRTLE AVE
LOT 86 EAST, ATLANTICVILLE

LOT SIZE: 22,026 SF

FLOOD ZONE: AE-10

2025-03-21



1 SITE DIAGRAM - EXISTING
SCALE: 1/16" = 1'-0"

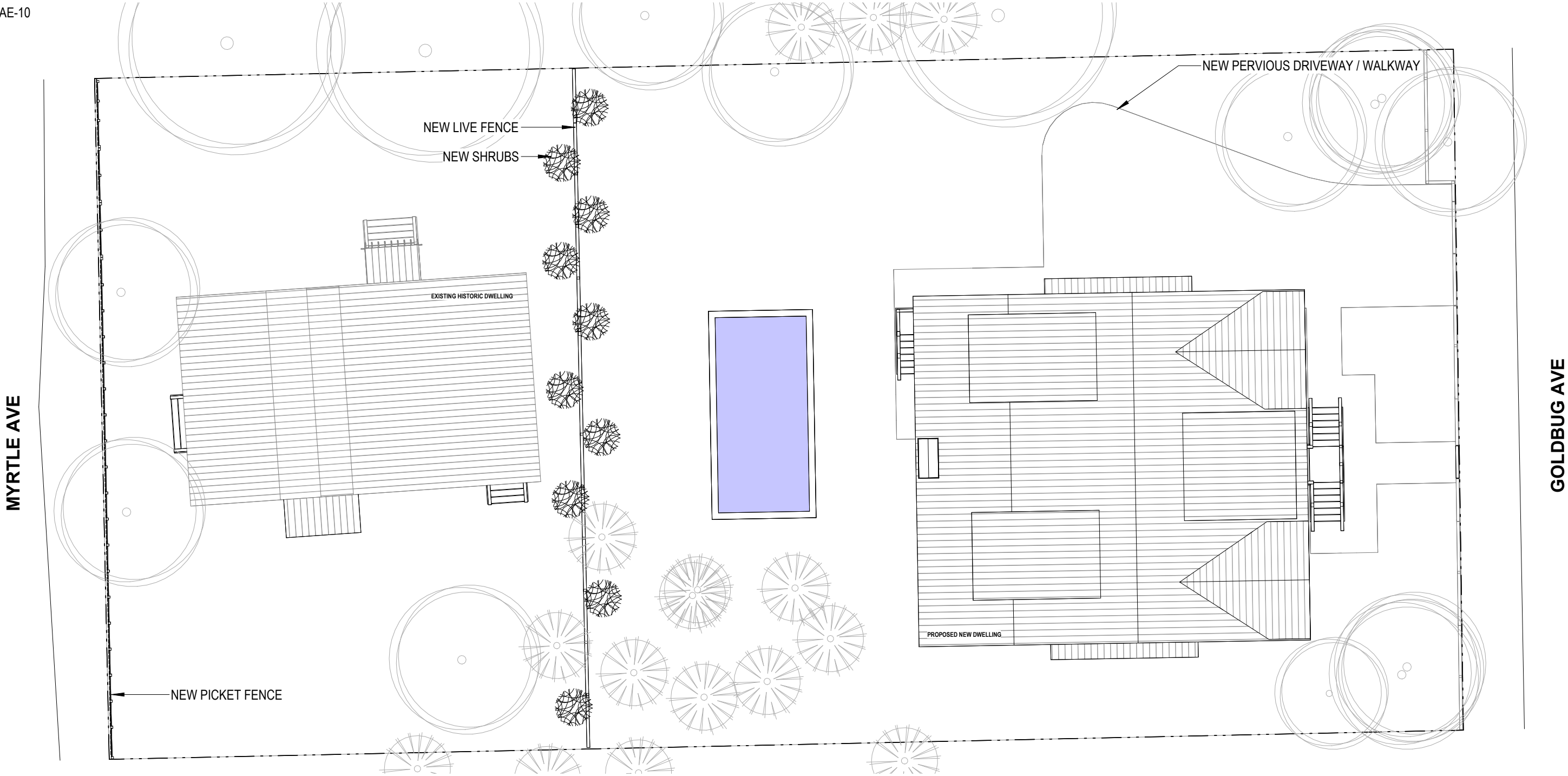


2608 MYRTLE AVE
LOT 86 EAST, ATLANTICVILLE

LOT SIZE: 22,026 SF

FLOOD ZONE: AE-10

2025-03-21



1 SITE DIAGRAM - PROPOSED
SCALE: 1/16" = 1'-0"

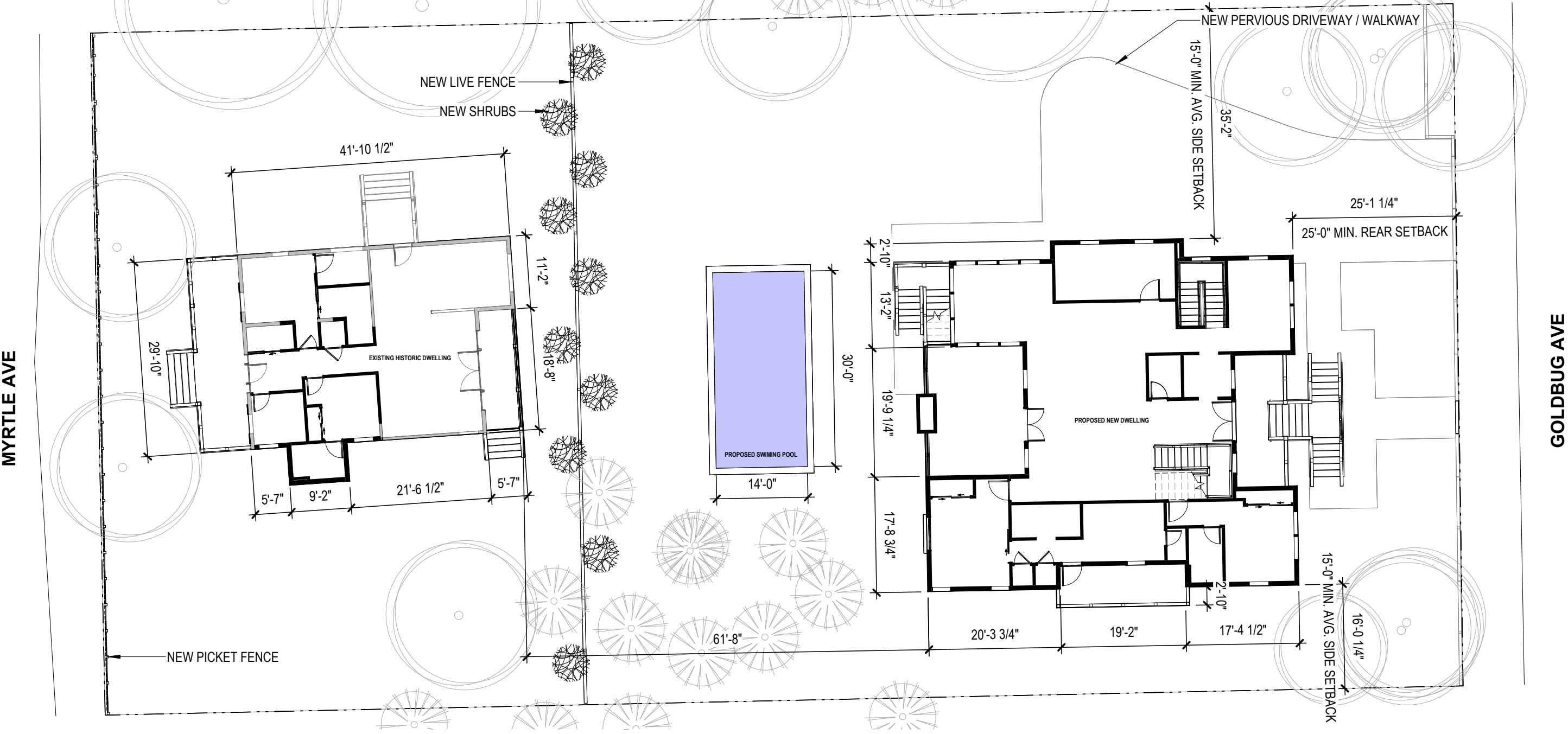


2608 MYRTLE AVE
LOT 86 EAST, ATLANTICVILLE

LOT SIZE: 22,026 SF

FLOOD ZONE: AE-10

2025-03-21



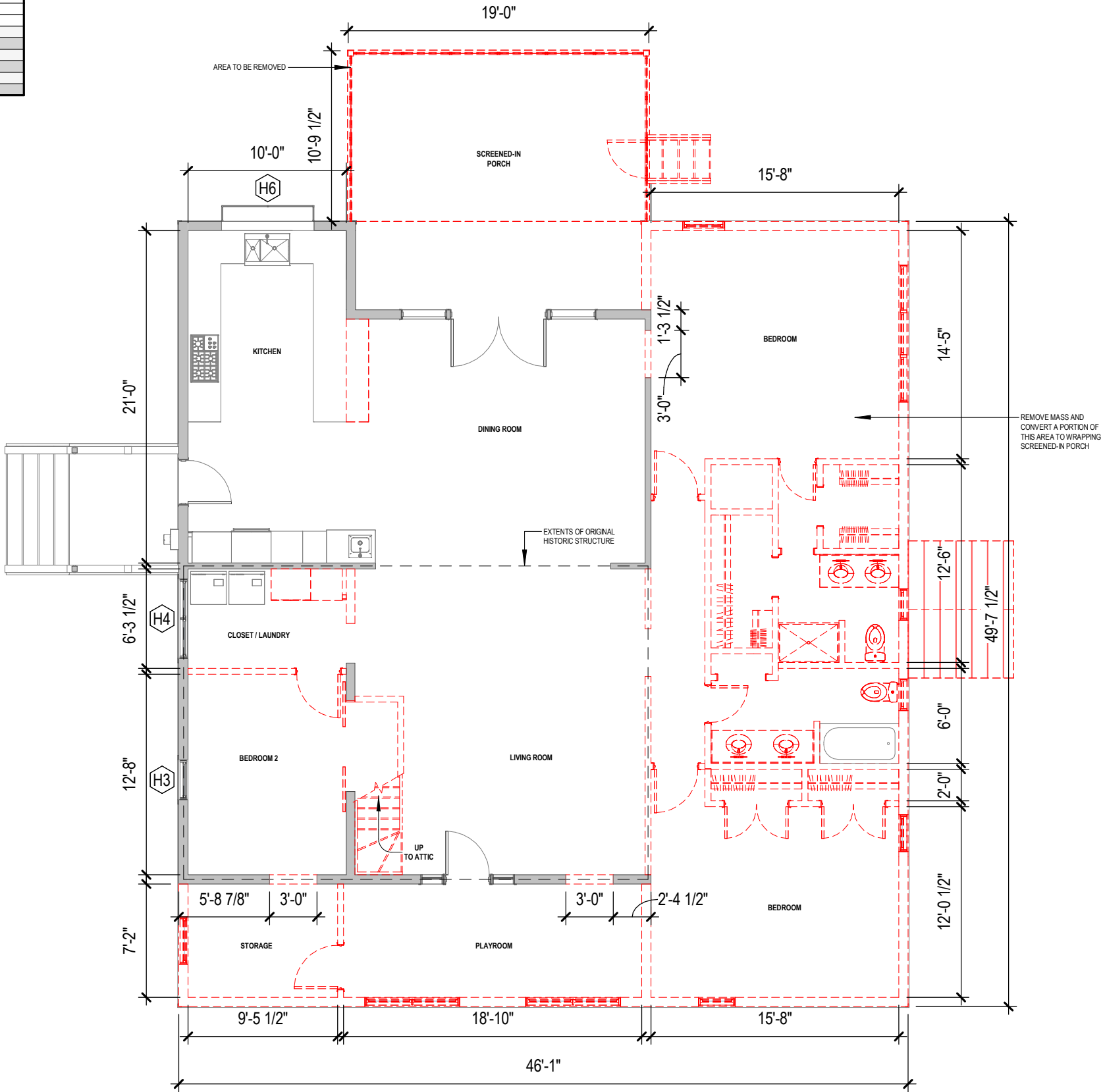
1 SITE DIAGRAM - PROPOSED - PLAN

SCALE: 1/16" = 1'-0"



WINDOW SCHEDULE - HISTORIC COTTAGE						
TAG	WIDTH	HEIGHT	TYPE	LITES	FUNCTION	NOTES
H1	36"	54"	SINGLE HUNG	4	OPERABLE	RESTORATION GRADE, 2 OVER 2
H2	36"	54"	SINGLE HUNG	4	OPERABLE	RE-PURPOSED WOOD WINDOWS
H3	30"	48"	SINGLE HUNG	2	OPERABLE	(E) WINDOW TO REMAIN, PRESERVED
H4	60"	48"	SINGLE HUNG	2	OPERABLE	(E) WINDOW TO REMAIN, PRESERVED
H5	28"	42"	SINGLE HUNG	2	OPERABLE	NEW WOOD-CLAD WINDOW
H6	70"	48"	GARDEN	5	FIXED	(E) WINDOW TO REMAIN, PRESERVED

PHASING LEGEND	
	(E) TO BE REMOVED / DEMOLISHED
	(E) TO REMAIN
	NEW

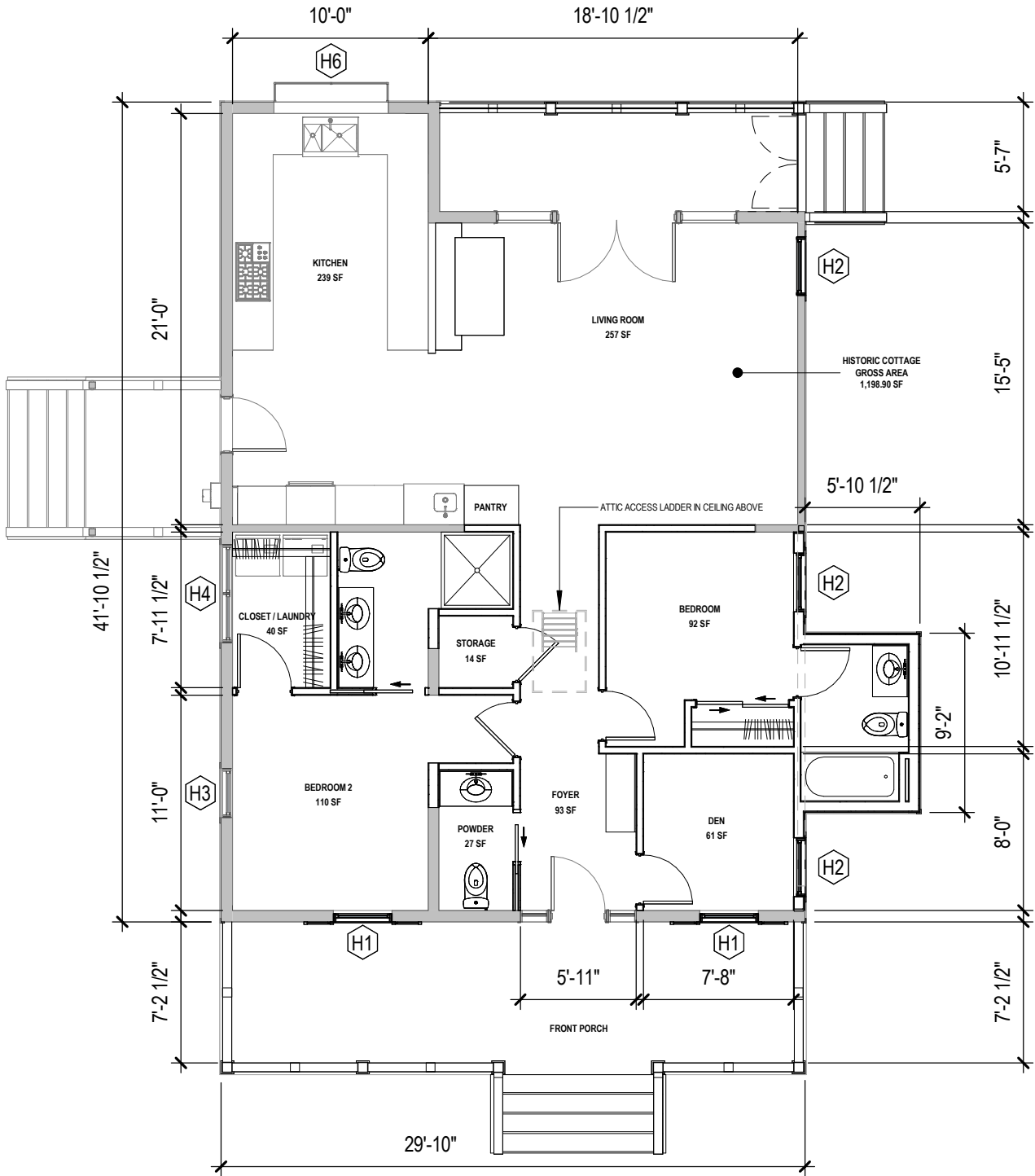


1 FLOOR PLAN- GROUND LEVEL
SCALE: 1/8" = 1'-0"



WINDOW SCHEDULE - HISTORIC COTTAGE						
TAG	WIDTH	HEIGHT	TYPE	LITES	FUNCTION	NOTES
H1	36"	54"	SINGLE HUNG	4	OPERABLE	RESTORATION GRADE, 2 OVER 2
H2	36"	54"	SINGLE HUNG	4	OPERABLE	RE-PURPOSED WOOD WINDOWS
H3	30"	48"	SINGLE HUNG	2	OPERABLE	(E) WINDOW TO REMAIN, PRESERVED
H4	60"	48"	SINGLE HUNG	2	OPERABLE	(E) WINDOW TO REMAIN, PRESERVED
H5	28"	42"	SINGLE HUNG	2	OPERABLE	NEW WOOD-CLAD WINDOW
H6	70"	48"	GARDEN	5	FIXED	(E) WINDOW TO REMAIN, PRESERVED

PHASING LEGEND	
	(E) TO BE REMOVED / DEMOLISHED
	(E) TO REMAIN
	NEW



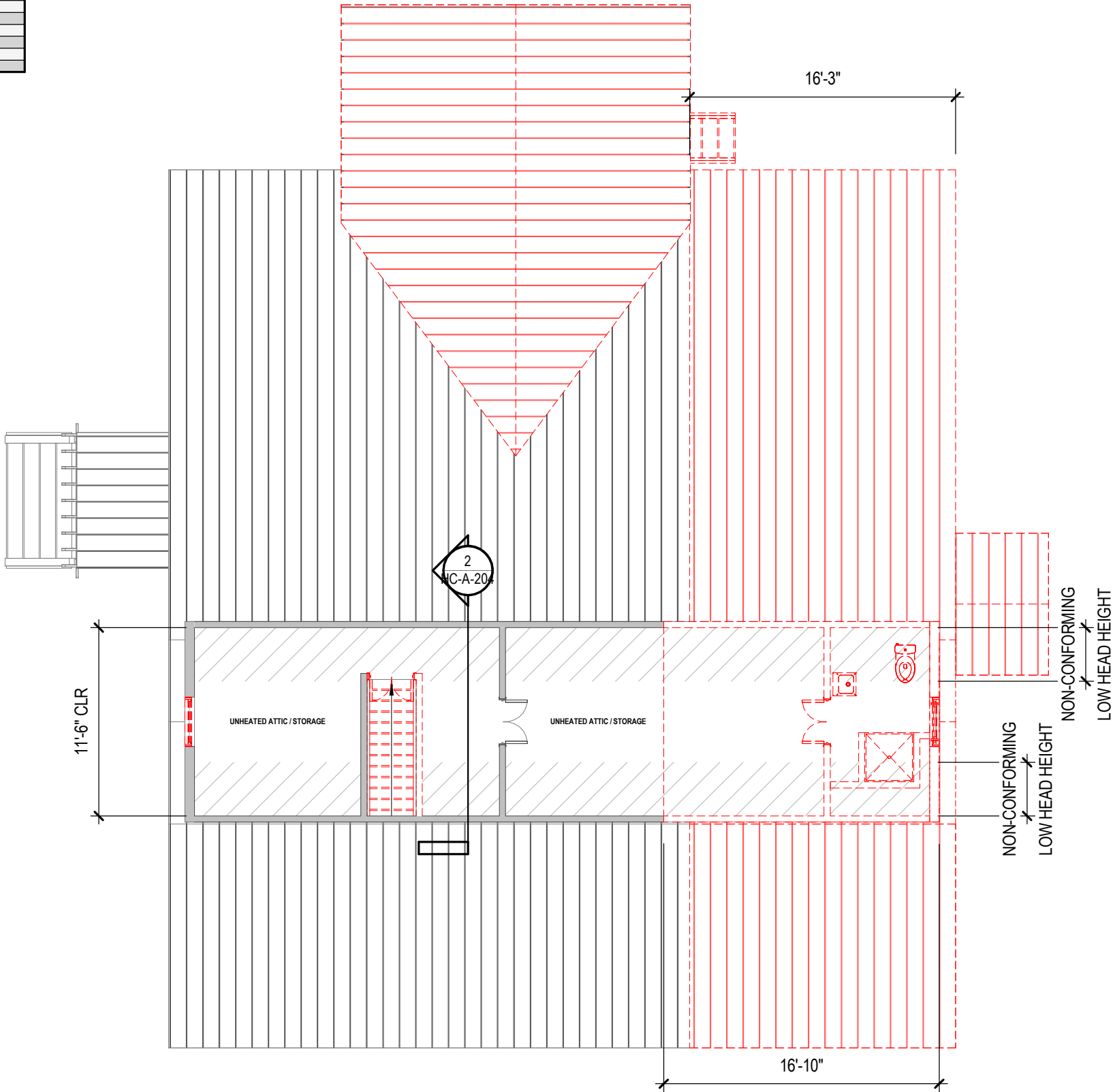
1 FLOOR PLAN- GROUND LEVEL

SCALE: 1/8" = 1'-0"

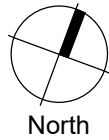


WINDOW SCHEDULE - HISTORIC COTTAGE						
TAG	WIDTH	HEIGHT	TYPE	LITES	FUNCTION	NOTES
H1	36"	54"	SINGLE HUNG	4	OPERABLE	RESTORATION GRADE, 2 OVER 2
H2	36"	54"	SINGLE HUNG	4	OPERABLE	RE-PURPOSED WOOD WINDOWS
H3	30"	48"	SINGLE HUNG	2	OPERABLE	(E) WINDOW TO REMAIN, PRESERVED
H4	60"	48"	SINGLE HUNG	2	OPERABLE	(E) WINDOW TO REMAIN, PRESERVED
H5	28"	42"	SINGLE HUNG	2	OPERABLE	NEW WOOD-CLAD WINDOW
H6	70"	48"	GARDEN	5	FIXED	(E) WINDOW TO REMAIN, PRESERVED

PHASING LEGEND	
	(E) TO BE REMOVED / DEMOLISHED
	(E) TO REMAIN
	NEW

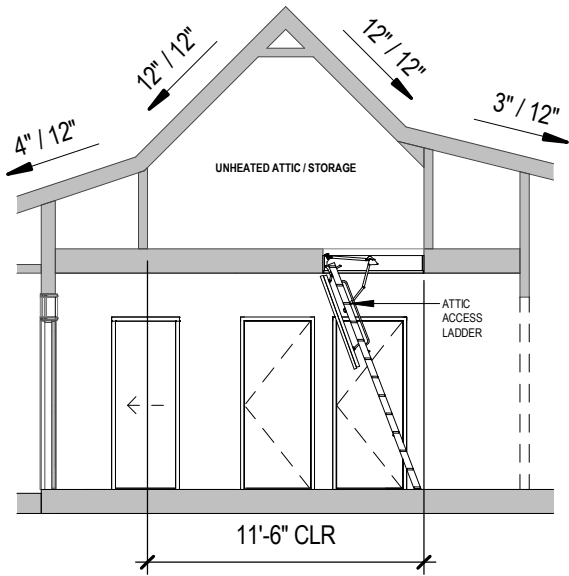


1 FLOOR PLAN- ATTIC
SCALE: 1/8" = 1'-0"

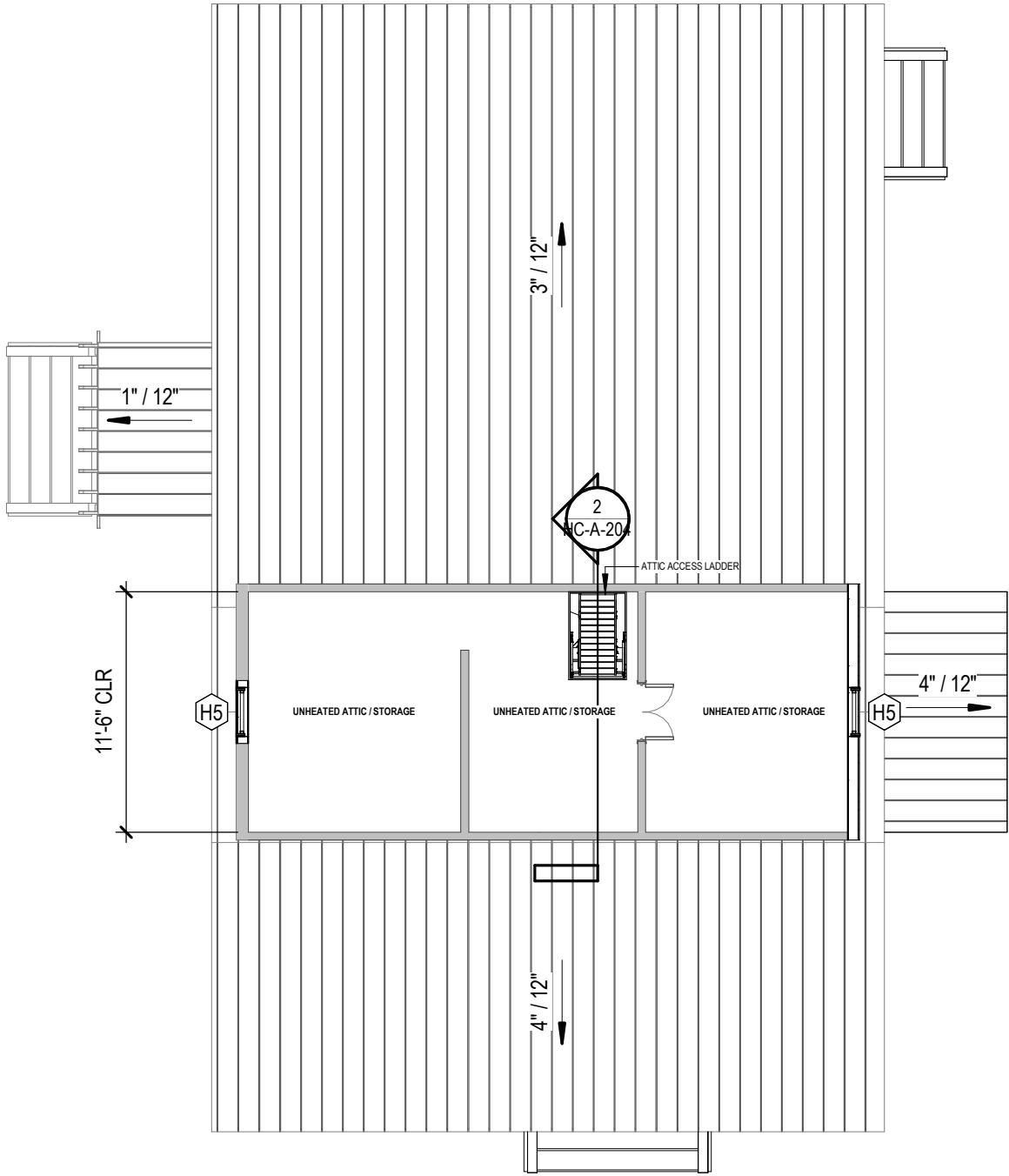


WINDOW SCHEDULE - HISTORIC COTTAGE						
TAG	WIDTH	HEIGHT	TYPE	LITES	FUNCTION	NOTES
H1	36"	54"	SINGLE HUNG	4	OPERABLE	RESTORATION GRADE, 2 OVER 2
H2	36"	54"	SINGLE HUNG	4	OPERABLE	RE-PURPOSED WOOD WINDOWS
H3	30"	48"	SINGLE HUNG	2	OPERABLE	(E) WINDOW TO REMAIN, PRESERVED
H4	60"	48"	SINGLE HUNG	2	OPERABLE	(E) WINDOW TO REMAIN, PRESERVED
H5	28"	42"	SINGLE HUNG	2	OPERABLE	NEW WOOD-CLAD WINDOW
H6	70"	48"	GARDEN	5	FIXED	(E) WINDOW TO REMAIN, PRESERVED

PHASING LEGEND	
	(E) TO BE REMOVED / DEMOLISHED
	(E) TO REMAIN
	NEW



2 SECTION THROUGH ATTIC
SCALE: 1/8" = 1'-0"

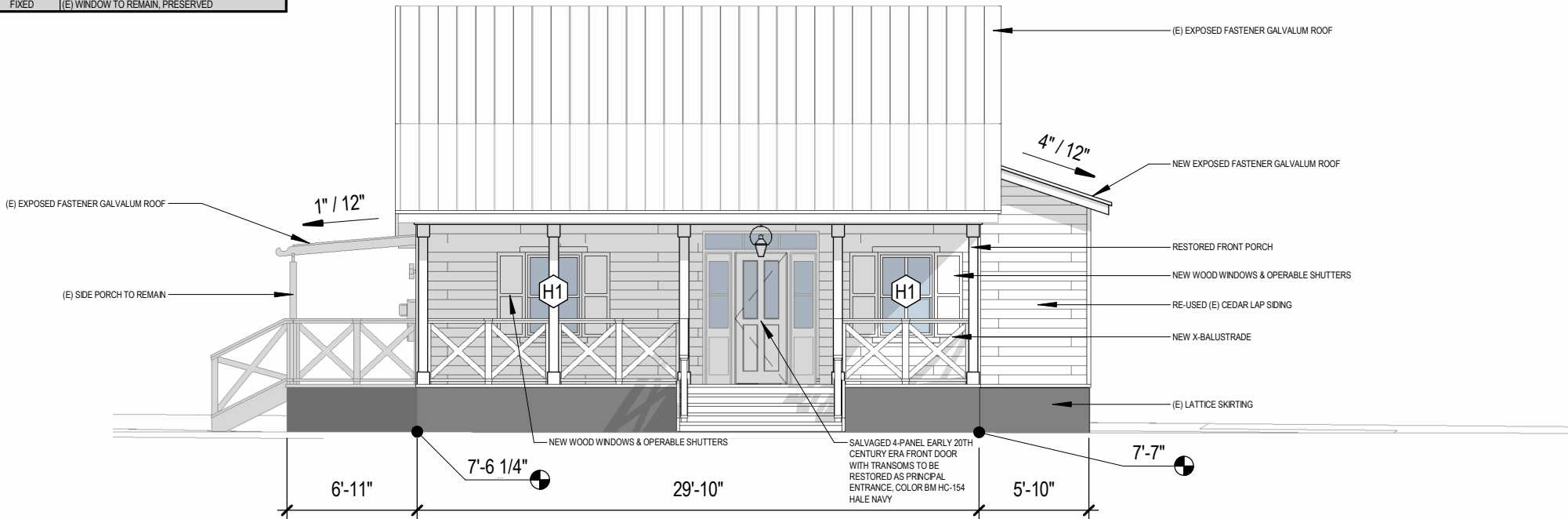


1 FLOOR PLAN- ATTIC
SCALE: 1/8" = 1'-0"

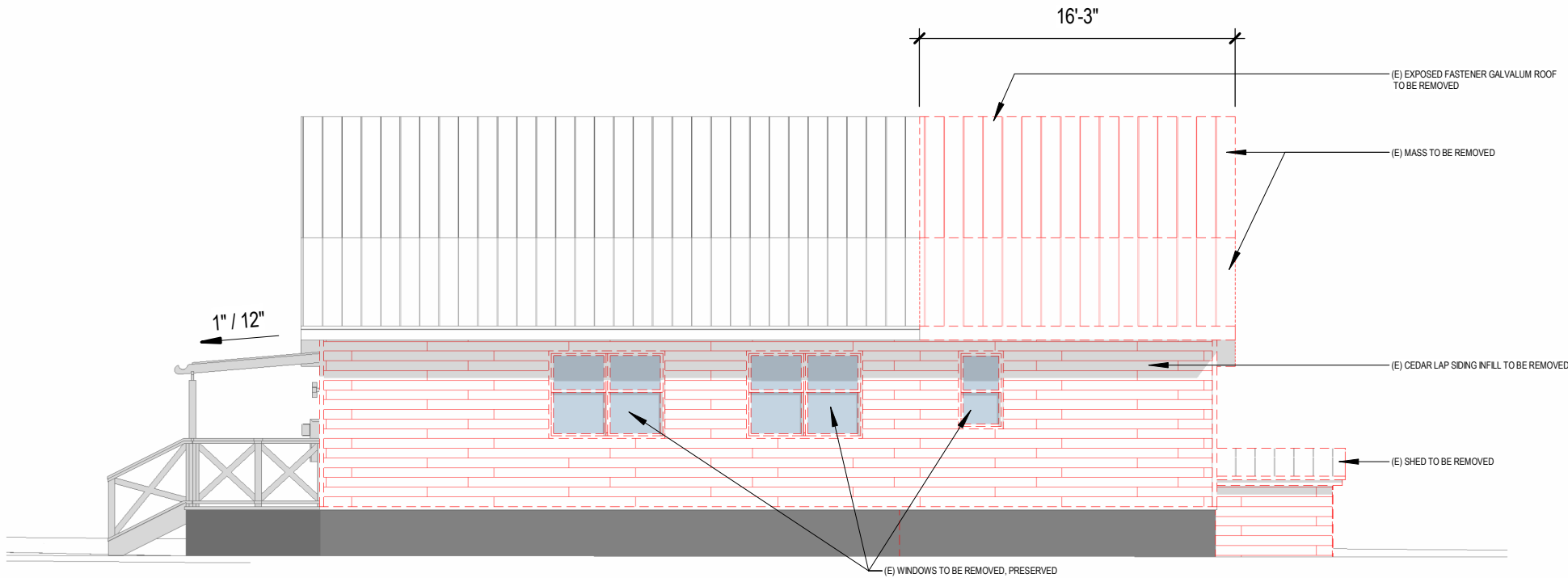


WINDOW SCHEDULE - HISTORIC COTTAGE						
TAG	WIDTH	HEIGHT	TYPE	LITES	FUNCTION	NOTES
H1	36"	54"	SINGLE HUNG	4	OPERABLE	RESTORATION GRADE, 2 OVER 2
H2	36"	54"	SINGLE HUNG	4	OPERABLE	RE-PURPOSED WOOD WINDOWS
H3	30"	48"	SINGLE HUNG	2	OPERABLE	(E) WINDOW TO REMAIN, PRESERVED
H4	60"	48"	SINGLE HUNG	2	OPERABLE	(E) WINDOW TO REMAIN, PRESERVED
H5	28"	42"	SINGLE HUNG	2	OPERABLE	NEW WOOD-CLAD WINDOW
H6	70"	48"	GARDEN	5	FIXED	(E) WINDOW TO REMAIN, PRESERVED

PHASING LEGEND	
	(E) TO BE REMOVED / DEMOLISHED
	(E) TO REMAIN
	NEW



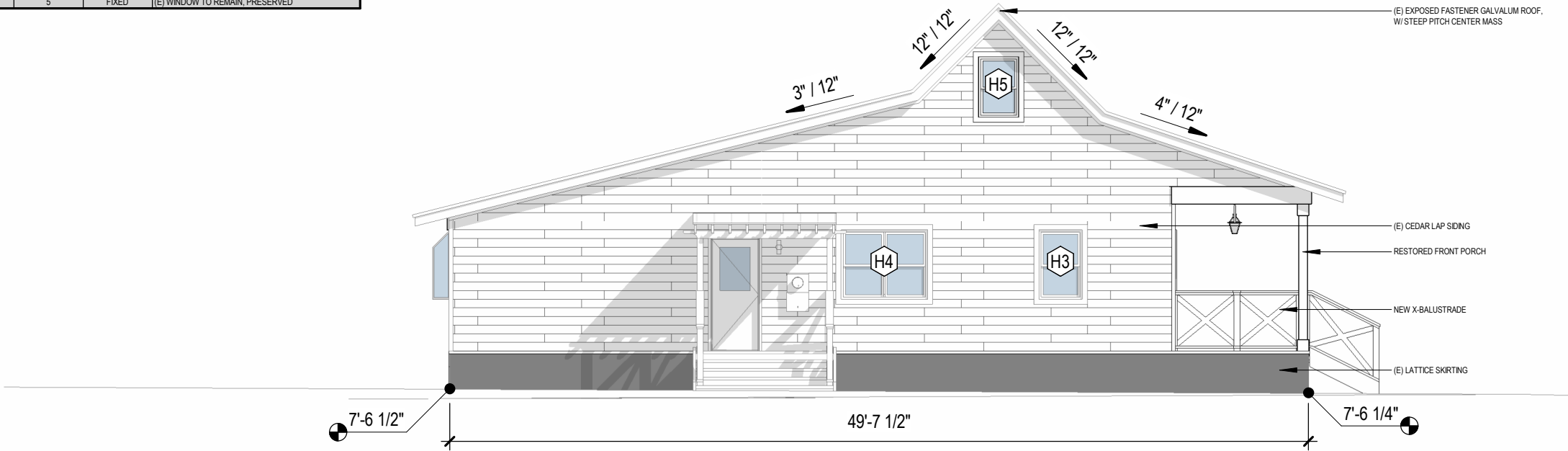
1 ELEVATION - SE - PROPOSED
SCALE: 1/8" = 1'-0"



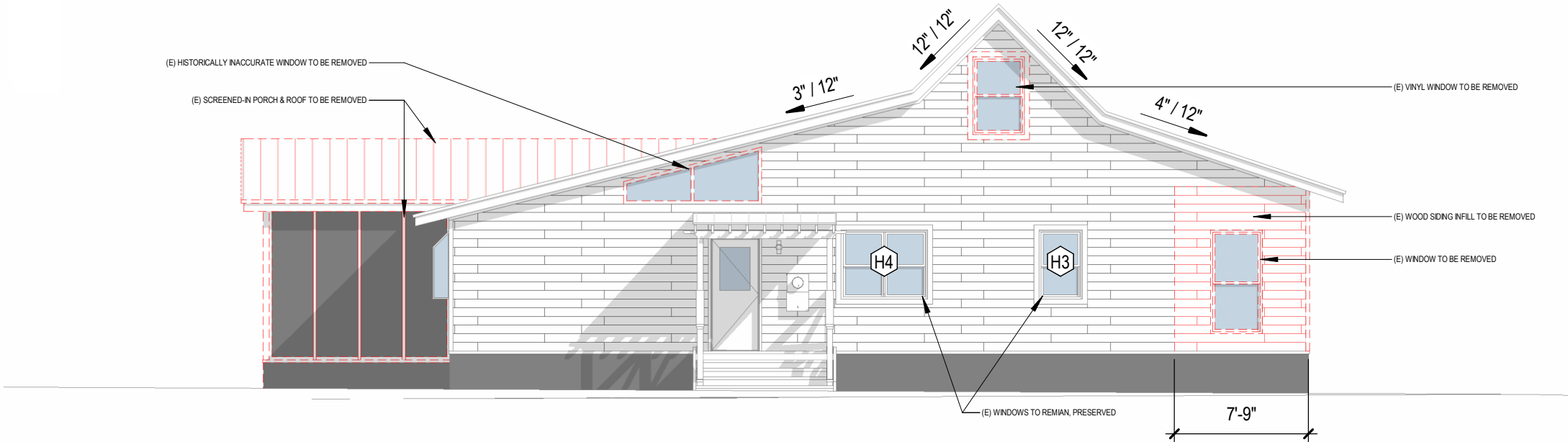
2 ELEVATION - SE - EXISTING
SCALE: 1/8" = 1'-0"

WINDOW SCHEDULE - HISTORIC COTTAGE						
TAG	WIDTH	HEIGHT	TYPE	LITES	FUNCTION	NOTES
H1	36"	54"	SINGLE HUNG	4	OPERABLE	RESTORATION GRADE, 2 OVER 2
H2	36"	54"	SINGLE HUNG	4	OPERABLE	RE-PURPOSED WOOD WINDOWS
H3	30"	48"	SINGLE HUNG	2	OPERABLE	(E) WINDOW TO REMAIN, PRESERVED
H4	60"	48"	SINGLE HUNG	2	OPERABLE	(E) WINDOW TO REMAIN, PRESERVED
H5	28"	42"	SINGLE HUNG	2	OPERABLE	NEW WOOD-CLAD WINDOW
H6	70"	48"	GARDEN	5	FIXED	(E) WINDOW TO REMAIN, PRESERVED

PHASING LEGEND	
	(E) TO BE REMOVED / DEMOLISHED
	(E) TO REMAIN
	NEW



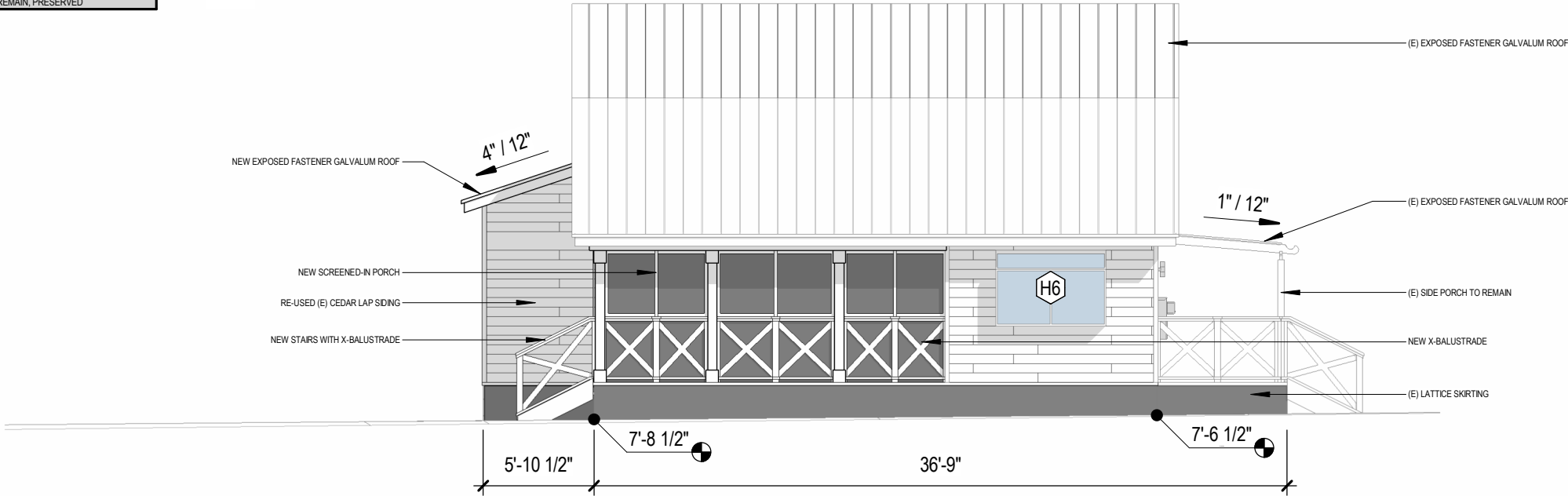
1 ELEVATION - SW - PROPOSED
SCALE: 1/8" = 1'-0"



2 ELEVATION - SW - EXISTING
SCALE: 1/8" = 1'-0"

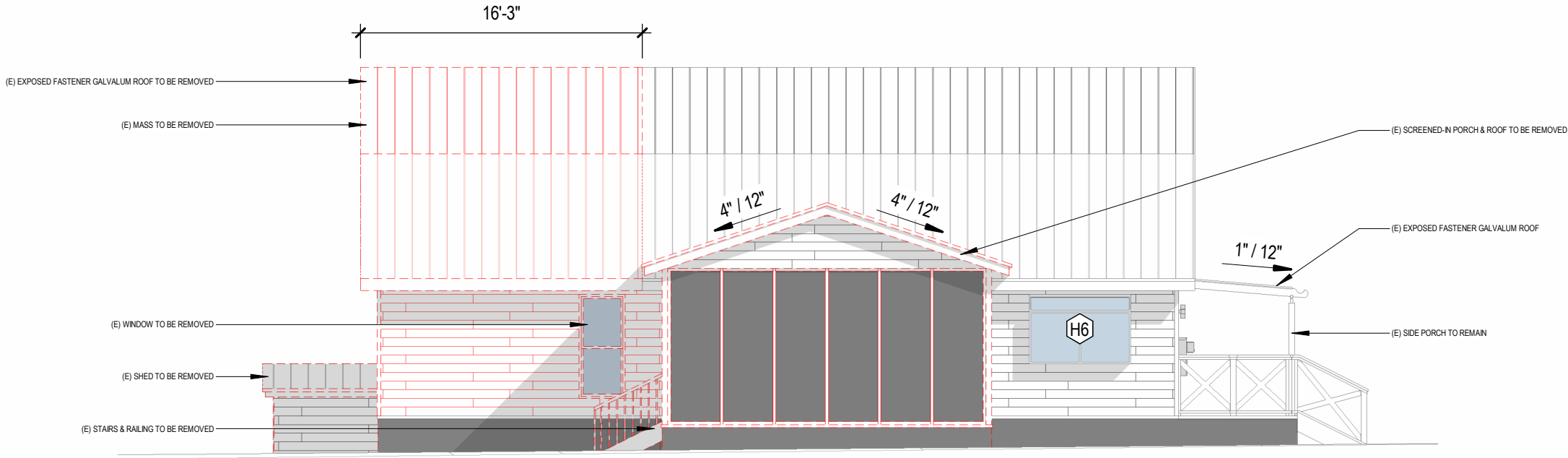
WINDOW SCHEDULE - HISTORIC COTTAGE						
TAG	WIDTH	HEIGHT	TYPE	LITES	FUNCTION	NOTES
H1	36"	54"	SINGLE HUNG	4	OPERABLE	RESTORATION GRADE, 2 OVER 2
H2	36"	54"	SINGLE HUNG	4	OPERABLE	RE-PURPOSED WOOD WINDOWS
H3	30"	48"	SINGLE HUNG	2	OPERABLE	(E) WINDOW TO REMAIN, PRESERVED
H4	60"	48"	SINGLE HUNG	2	OPERABLE	(E) WINDOW TO REMAIN, PRESERVED
H5	28"	42"	SINGLE HUNG	2	OPERABLE	NEW WOOD-CLAD WINDOW
H6	70"	48"	GARDEN	5	FIXED	(E) WINDOW TO REMAIN, PRESERVED

PHASING LEGEND	
	(E) TO BE REMOVED / DEMOLISHED
	(E) TO REMAIN
	NEW



1 ELEVATION - NW - PROPOSED

SCALE: 1/8" = 1'-0"

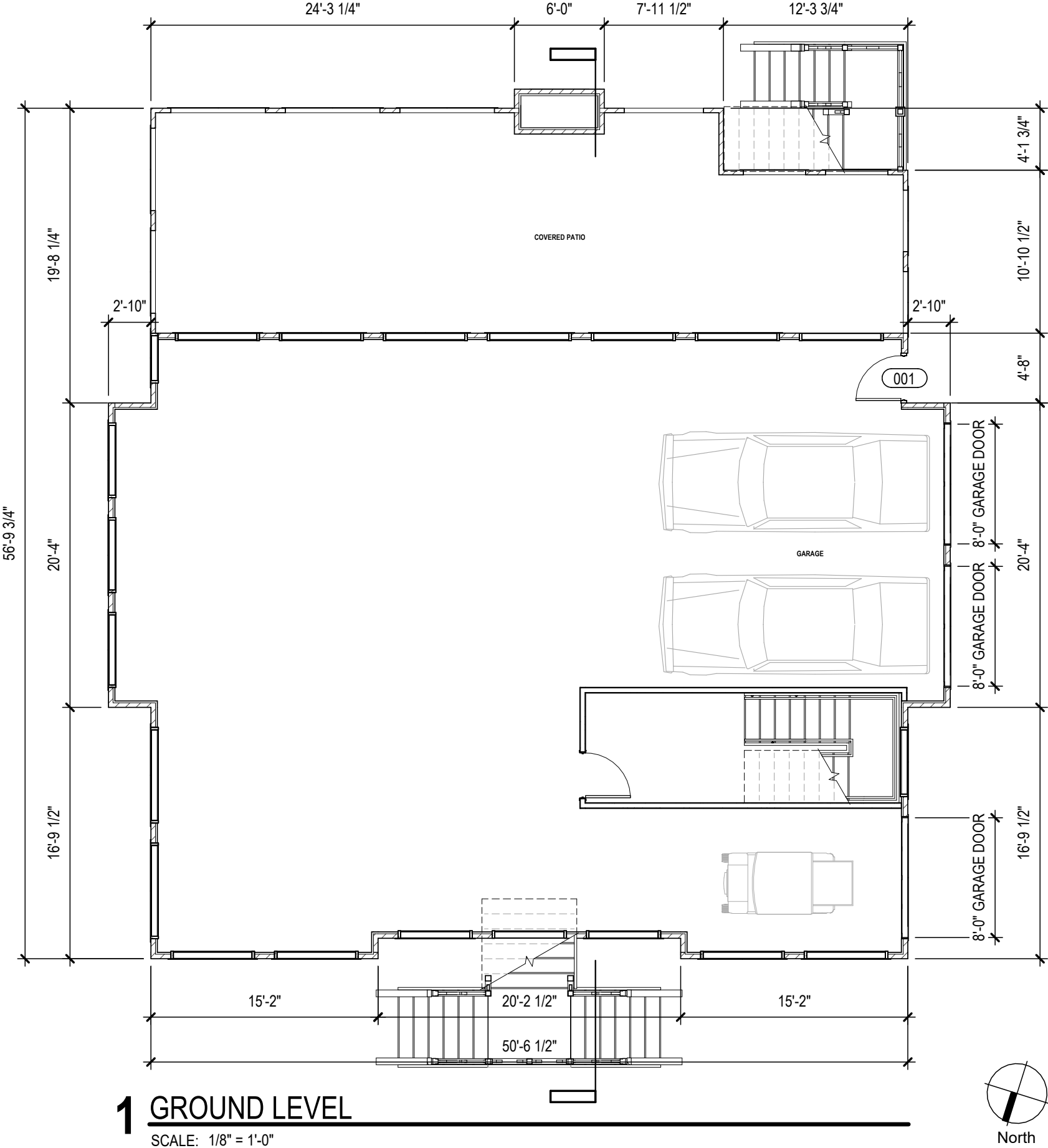


2 ELEVATION - NW - EXISTING

SCALE: 1/8" = 1'-0"

WINDOW SCHEDULE - NEW CONSTRUCTION						
TAG	WIDTH	HEIGHT	TYPE	LITES	FUNCTION	NOTES
N1	33"	54"	SINGLE HUNG	4	OPERABLE	NEW WOOD-CLAD WINDOW
N2	33"	60"	SINGLE HUNG	4	OPERABLE	NEW WOOD-CLAD WINDOW
N3	36"	54"	SINGLE HUNG	4	OPERABLE	NEW WOOD-CLAD WINDOW
N4	36"	60"	SINGLE HUNG	4	OPERABLE	NEW WOOD-CLAD WINDOW
N5	36"	72"	SINGLE HUNG	4	OPERABLE	NEW WOOD-CLAD WINDOW
N6	42"	60"	SINGLE HUNG	4	OPERABLE	NEW WOOD-CLAD WINDOW
N7	42"	66"	SINGLE HUNG	4	OPERABLE	NEW WOOD-CLAD WINDOW
N8	42"	72"	SINGLE HUNG	4	OPERABLE	NEW WOOD-CLAD WINDOW
N9	44"	72"	SINGLE HUNG	4	OPERABLE	NEW WOOD-CLAD WINDOW

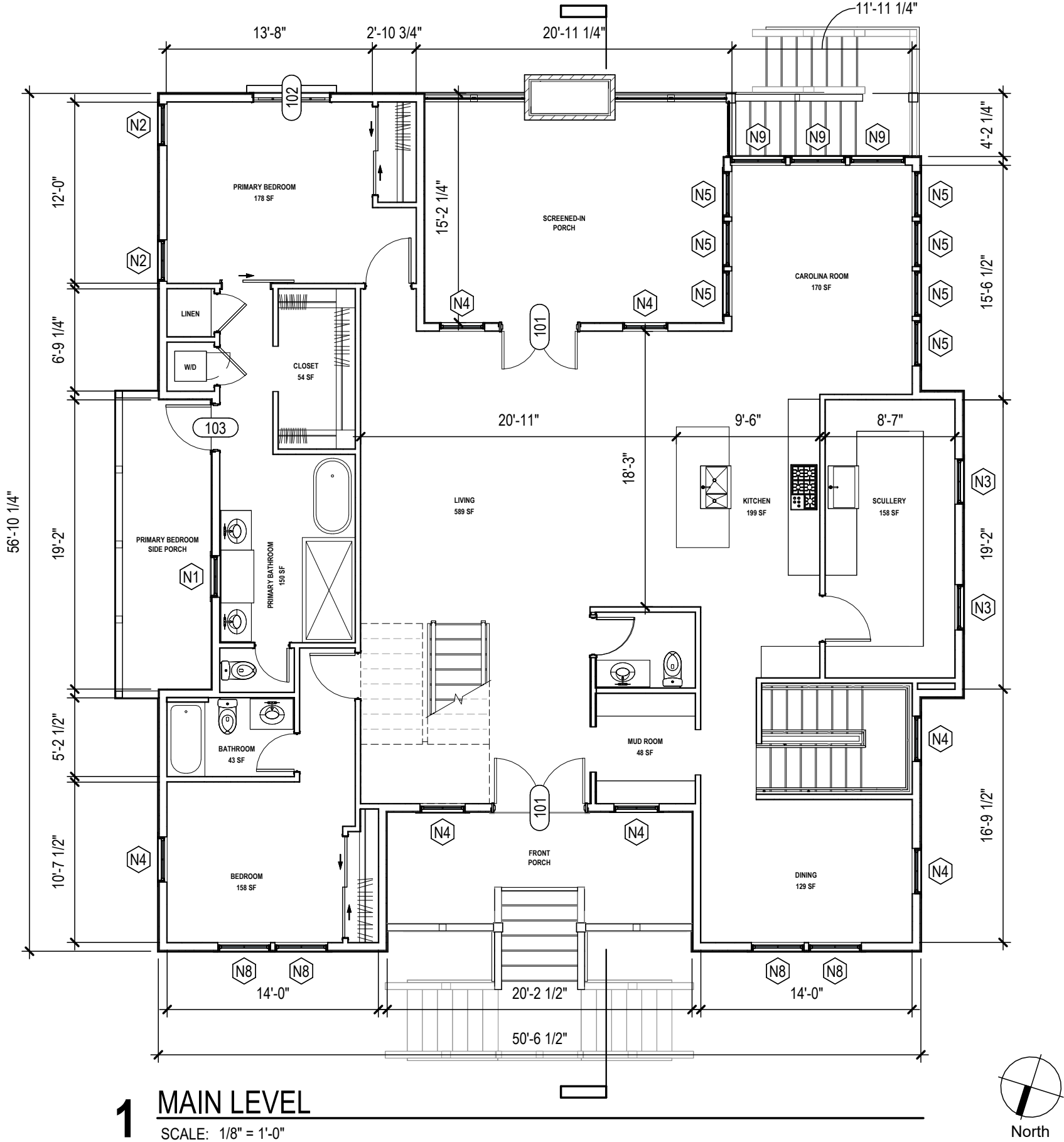
DOOR SCHEDULE - NEW CONSTRUCTION - EXT							
TAG	WIDTH	WIDTH OVERALL	HEIGHT	PANELS	LITES	MFR	MODEL
001	3'-0"	3'-0"	7'-0"	1	0	MASONITE	3-PANEL FIBERGLASS DOOR
101	3'-0"	6'-0"	8'-0"	2	6	MIRANDA	ARCH TOP MAHOGANY WOOD DOOR
102	2'-6"	5'-0"	8'-0"	2	8	TBD	4-LITE MAHOGANY WOOD DOOR
103	3'-0"	3'-0"	8'-0"	1	4	TBD	4-LITE MAHOGANY WOOD DOOR



1 GROUND LEVEL
SCALE: 1/8" = 1'-0"

WINDOW SCHEDULE - NEW CONSTRUCTION						
TAG	WIDTH	HEIGHT	TYPE	LITES	FUNCTION	NOTES
N1	33"	54"	SINGLE HUNG	4	OPERABLE	NEW WOOD-CLAD WINDOW
N2	33"	60"	SINGLE HUNG	4	OPERABLE	NEW WOOD-CLAD WINDOW
N3	36"	54"	SINGLE HUNG	4	OPERABLE	NEW WOOD-CLAD WINDOW
N4	36"	60"	SINGLE HUNG	4	OPERABLE	NEW WOOD-CLAD WINDOW
N5	36"	72"	SINGLE HUNG	4	OPERABLE	NEW WOOD-CLAD WINDOW
N6	42"	60"	SINGLE HUNG	4	OPERABLE	NEW WOOD-CLAD WINDOW
N7	42"	66"	SINGLE HUNG	4	OPERABLE	NEW WOOD-CLAD WINDOW
N8	42"	72"	SINGLE HUNG	4	OPERABLE	NEW WOOD-CLAD WINDOW
N9	44"	72"	SINGLE HUNG	4	OPERABLE	NEW WOOD-CLAD WINDOW

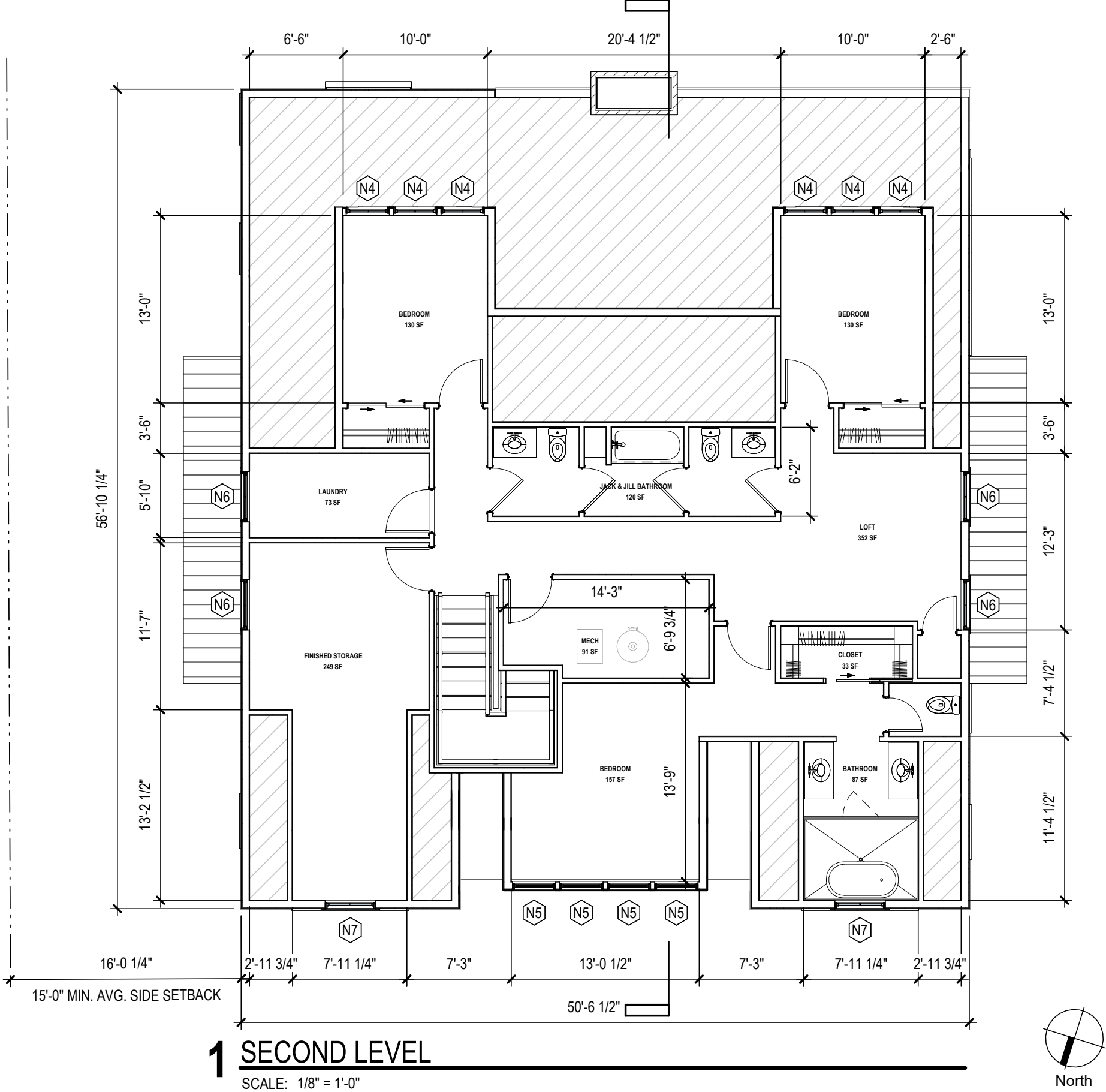
DOOR SCHEDULE - NEW CONSTRUCTION - EXT							
TAG	WIDTH	WIDTH OVERALL	HEIGHT	PANELS	LITES	MFR	MODEL
001	3'-0"	3'-0"	7'-0"	1	0	MASONITE	3-PANEL FIBERGLASS DOOR
101	3'-0"	6'-0"	8'-0"	2	6	MIRANDA	ARCH TOP MAHOGANY WOOD DOOR
102	2'-6"	5'-0"	8'-0"	2	8	TBD	4-LITE MAHOGANY WOOD DOOR
103	3'-0"	3'-0"	8'-0"	1	4	TBD	4-LITE MAHOGANY WOOD DOOR



1 MAIN LEVEL
SCALE: 1/8" = 1'-0"

WINDOW SCHEDULE - NEW CONSTRUCTION						
TAG	WIDTH	HEIGHT	TYPE	LITES	FUNCTION	NOTES
N1	33"	54"	SINGLE HUNG	4	OPERABLE	NEW WOOD-CLAD WINDOW
N2	33"	60"	SINGLE HUNG	4	OPERABLE	NEW WOOD-CLAD WINDOW
N3	36"	54"	SINGLE HUNG	4	OPERABLE	NEW WOOD-CLAD WINDOW
N4	36"	60"	SINGLE HUNG	4	OPERABLE	NEW WOOD-CLAD WINDOW
N5	36"	72"	SINGLE HUNG	4	OPERABLE	NEW WOOD-CLAD WINDOW
N6	42"	60"	SINGLE HUNG	4	OPERABLE	NEW WOOD-CLAD WINDOW
N7	42"	66"	SINGLE HUNG	4	OPERABLE	NEW WOOD-CLAD WINDOW
N8	42"	72"	SINGLE HUNG	4	OPERABLE	NEW WOOD-CLAD WINDOW
N9	44"	72"	SINGLE HUNG	4	OPERABLE	NEW WOOD-CLAD WINDOW

DOOR SCHEDULE - NEW CONSTRUCTION - EXT							
TAG	WIDTH	WIDTH OVERALL	HEIGHT	PANELS	LITES	MFR	MODEL
001	3'-0"	3'-0"	7'-0"	1	0	MASONITE	3-PANEL FIBERGLASS DOOR
101	3'-0"	6'-0"	8'-0"	2	6	MIRANDA	ARCH TOP MAHOGANY WOOD DOOR
102	2'-6"	5'-0"	8'-0"	2	8	TBD	4-LITE MAHOGANY WOOD DOOR
103	3'-0"	3'-0"	8'-0"	1	4	TBD	4-LITE MAHOGANY WOOD DOOR



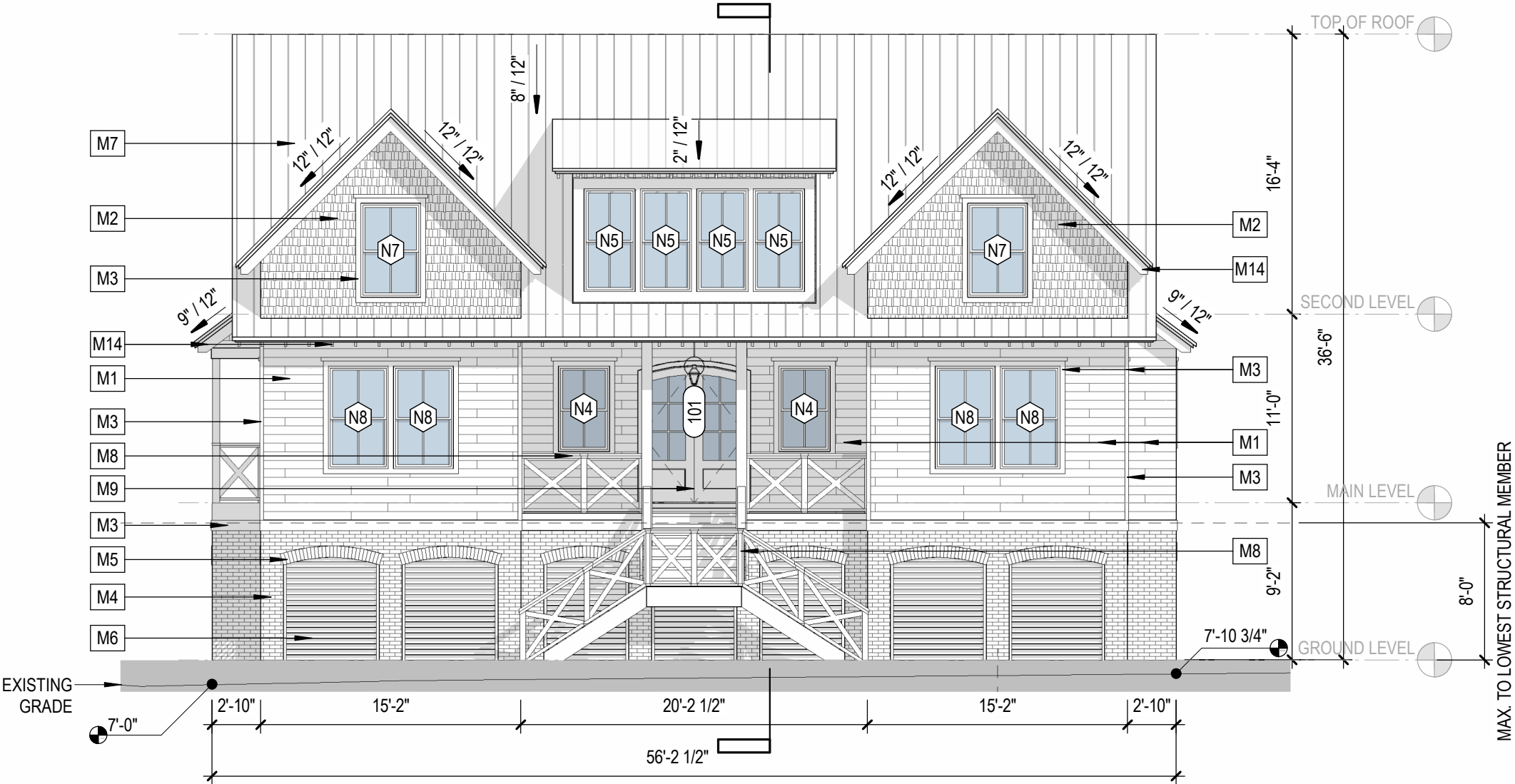
WINDOW SCHEDULE - NEW CONSTRUCTION						
TAG	WIDTH	HEIGHT	TYPE	LITES	FUNCTION	NOTES
N1	33"	54"	SINGLE HUNG	4	OPERABLE	NEW WOOD-CLAD WINDOW
N2	33"	60"	SINGLE HUNG	4	OPERABLE	NEW WOOD-CLAD WINDOW
N3	36"	54"	SINGLE HUNG	4	OPERABLE	NEW WOOD-CLAD WINDOW
N4	36"	60"	SINGLE HUNG	4	OPERABLE	NEW WOOD-CLAD WINDOW
N5	36"	72"	SINGLE HUNG	4	OPERABLE	NEW WOOD-CLAD WINDOW
N6	42"	60"	SINGLE HUNG	4	OPERABLE	NEW WOOD-CLAD WINDOW
N7	42"	66"	SINGLE HUNG	4	OPERABLE	NEW WOOD-CLAD WINDOW
N8	42"	72"	SINGLE HUNG	4	OPERABLE	NEW WOOD-CLAD WINDOW
N9	44"	72"	SINGLE HUNG	4	OPERABLE	NEW WOOD-CLAD WINDOW

DOOR SCHEDULE - NEW CONSTRUCTION - EXT							
TAG	WIDTH	WIDTH OVERALL	HEIGHT	PANELS	LITES	MFR	MODEL
001	3'-0"	3'-0"	7'-0"	1	0	MASONITE	3-PANEL FIBERGLASS DOOR
101	3'-0"	6'-0"	8'-0"	2	6	MIRANDA	ARCH TOP MAHOGANY WOOD DOOR
102	2'-6"	5'-0"	8'-0"	2	8	TBD	4-LITE MAHOGANY WOOD DOOR
103	3'-0"	3'-0"	8'-0"	1	4	TBD	4-LITE MAHOGANY WOOD DOOR

MATERIAL SCHEDULE - NEW CONSTRUCTION			
TAG	DESCRIPTION	COLOR	COMMENTS
M1	5/8" THICK JAMES HARDIE ARTISAN LAP SIDING, SMOOTH, PAINTED	SW 7637 OYSTER WHITE	
M2	TANDO SHAKE, ROUGHSAWN CEDAR SIDING, PRE-FINISHED	DESERT SAND	
M3	JAMES HARDIE TRIM, PAINTED	SW 7005 PURE WHITE	
M4	OLD MILL THIN BRICK, FIELD, SINGLES	CITADEL	
M5	OLD MILL THIN BRICK, SEGMENTAL ARCH, CORNERS	CITADEL	
M6	HORIZONTAL SLAT LOUVER, WOOD, PAINTED	SW 9130 EVERGREEN FOG	TO MATCH ASH GREY
M7	STANDING SEAM METAL ROOF, PRE-FINISHED	ASH GREY	
M8	WOOD X-BALUSTRADE, PAINTED W/ STAINED TOP RAIL	OYSTER WHITE / STAIN	W/ CABLE RAIL, RE: 2.5/A-802
M9	ARCH TOP MAHOGANY WOOD FRENCH DOOR	STAIN, SEMI-TRANSPARENT	
M10	OLD MILL THIN BRICK, BISHOP'S ARCH CHIMNEY, SINGLES	CITADEL	
M11	WOOD FRAMED SCREENED-IN PORCH	SW 7637 OYSTER WHITE	
M12	4-LITE MAHOGANY WOOD DOOR	STAIN, SEMI-TRANSPARENT	
M13	7'-0" x 8'-0" BOARD AND BATTEN SECTIONAL GARAGE DOOR	SW 9130 EVERGREEN FOG	TO MATCH ASH GREY
M14	EXPOSED WOOD ROOF RAFTER TAIL	SW 7005 PURE WHITE	

ELEVATION CLARIFICATIONS	
BASE FLOOD ELEVATION	10'
DESIGN FLOOD ELEVATION (BASE ELEVATION + 1')	11'
PROPOSED FINISHED GRADE	8.5'

JAMES HARDIE TRIM	
TEXTURE	SMOOTH
WIDTH	2-1/2", 3-1/2", 7-1/4"
THICKNESS	3/4", 1-1/2"



1 ELEVATION - NW - PROPOSED
SCALE: 1/8" = 1'-0"

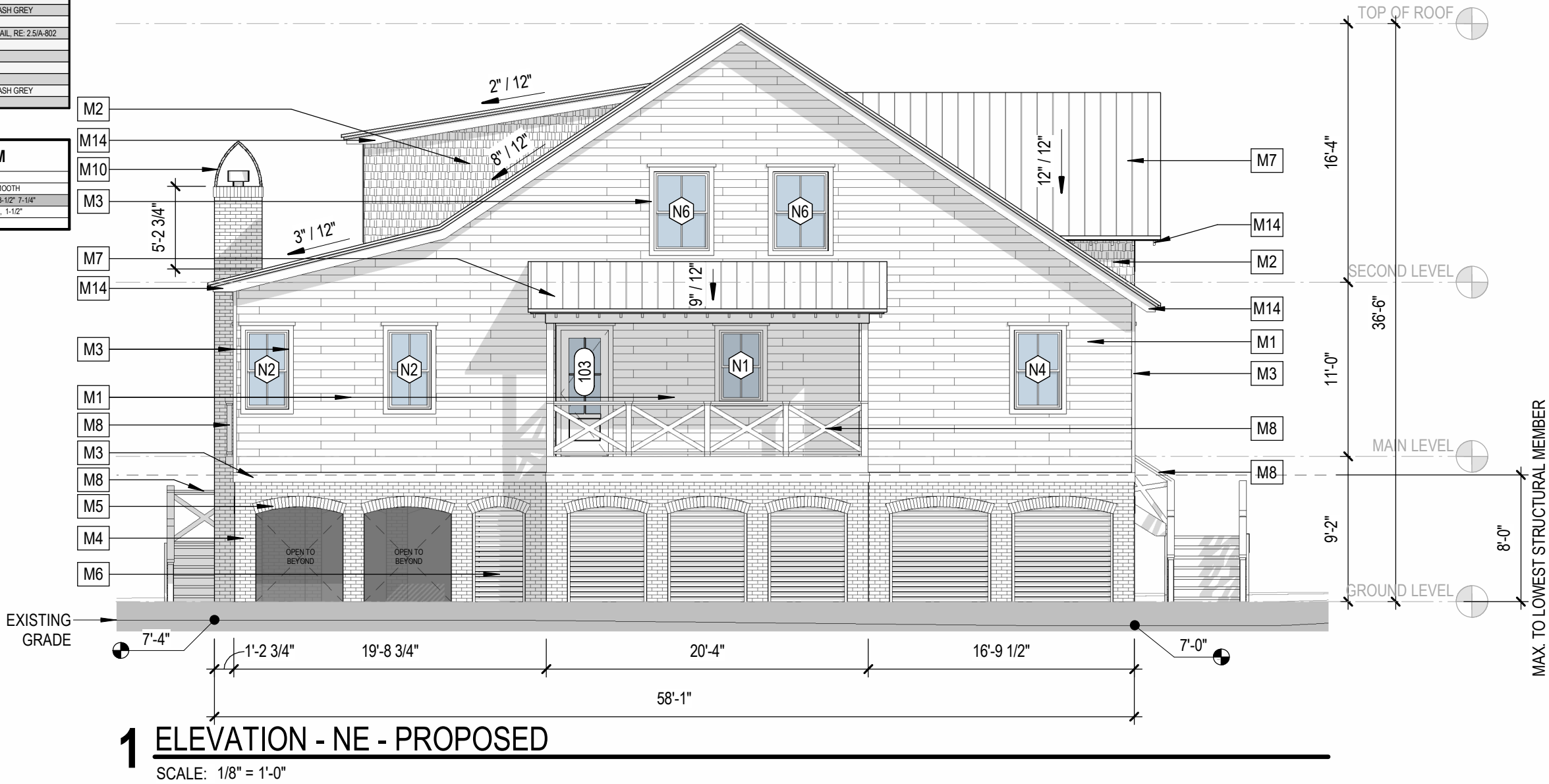
WINDOW SCHEDULE - NEW CONSTRUCTION						
TAG	WIDTH	HEIGHT	TYPE	LITES	FUNCTION	NOTES
N1	33"	54"	SINGLE HUNG	4	OPERABLE	NEW WOOD-CLAD WINDOW
N2	33"	60"	SINGLE HUNG	4	OPERABLE	NEW WOOD-CLAD WINDOW
N3	36"	54"	SINGLE HUNG	4	OPERABLE	NEW WOOD-CLAD WINDOW
N4	36"	60"	SINGLE HUNG	4	OPERABLE	NEW WOOD-CLAD WINDOW
N5	36"	72"	SINGLE HUNG	4	OPERABLE	NEW WOOD-CLAD WINDOW
N6	42"	60"	SINGLE HUNG	4	OPERABLE	NEW WOOD-CLAD WINDOW
N7	42"	66"	SINGLE HUNG	4	OPERABLE	NEW WOOD-CLAD WINDOW
N8	42"	72"	SINGLE HUNG	4	OPERABLE	NEW WOOD-CLAD WINDOW
N9	44"	72"	SINGLE HUNG	4	OPERABLE	NEW WOOD-CLAD WINDOW

DOOR SCHEDULE - NEW CONSTRUCTION - EXT							
TAG	WIDTH	WIDTH OVERALL	HEIGHT	PANELS	LITES	MFR	MODEL
001	3'-0"	3'-0"	7'-0"	1	0	MASONITE	3-PANEL FIBERGLASS DOOR
101	3'-0"	6'-0"	8'-0"	2	6	MIRANDA	ARCH TOP MAHOGANY WOOD DOOR
102	2'-6"	5'-0"	8'-0"	2	8	TBD	4-LITE MAHOGANY WOOD DOOR
103	3'-0"	3'-0"	8'-0"	1	4	TBD	4-LITE MAHOGANY WOOD DOOR

MATERIAL SCHEDULE - NEW CONSTRUCTION			
TAG	DESCRIPTION	COLOR	COMMENTS
M1	5/8" THICK JAMES HARDIE ARTISAN LAP SIDING, SMOOTH, PAINTED	SW 7637 OYSTER WHITE	
M2	TANDO SHAKE, ROUGHSAWN CEDAR SIDING, PRE-FINISHED	DESERT SAND	
M3	JAMES HARDIE TRIM, PAINTED	SW 7005 PURE WHITE	
M4	OLD MILL THIN BRICK, FIELD, SINGLES	CITADEL	
M5	OLD MILL THIN BRICK, SEGMENTAL ARCH, CORNERS	CITADEL	
M6	HORIZONTAL SLAT LOUVER, WOOD, PAINTED	SW 9130 EVERGREEN FOG	TO MATCH ASH GREY
M7	STANDING SEAM METAL ROOF, PRE-FINISHED	ASH GREY	
M8	WOOD X-BALUSTRADE, PAINTED W/ STAINED TOP RAIL	OYSTER WHITE / STAIN	W/ CABLE RAIL, RE: 2.5/A-802
M9	ARCH TOP MAHOGANY WOOD FRENCH DOOR	STAIN, SEMI-TRANSPARENT	
M10	OLD MILL THIN BRICK, BISHOP'S ARCH CHIMNEY, SINGLES	CITADEL	
M11	WOOD FRAMED SCREENED-IN PORCH	SW 7637 OYSTER WHITE	
M12	4-LITE MAHOGANY WOOD DOOR	STAIN, SEMI-TRANSPARENT	
M13	7'-0" x 8'-0" BOARD AND BATTEN SECTIONAL GARAGE DOOR	SW 9130 EVERGREEN FOG	TO MATCH ASH GREY
M14	EXPOSED WOOD ROOF RAFTER TAIL	SW 7005 PURE WHITE	

ELEVATION CLARIFICATIONS	
BASE FLOOD ELEVATION	10'
DESIGN FLOOD ELEVATION (BASE ELEVATION + 1')	11'
PROPOSED FINISHED GRADE	8.5'

JAMES HARDIE TRIM	
TEXTURE	SMOOTH
WIDTH	2-1/2", 3-1/2", 7-1/4"
THICKNESS	3/4", 1-1/2"



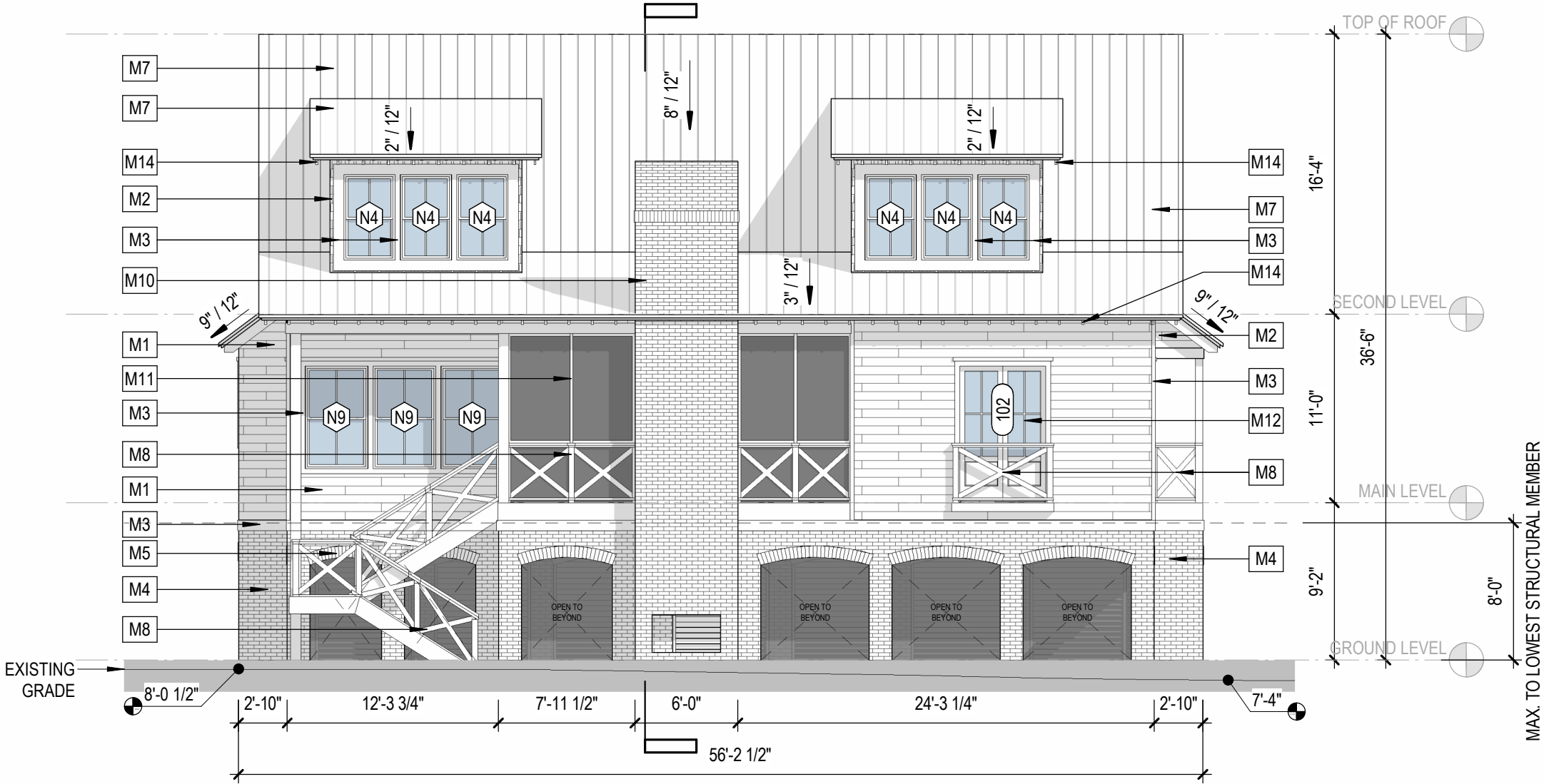
WINDOW SCHEDULE - NEW CONSTRUCTION						
TAG	WIDTH	HEIGHT	TYPE	LITES	FUNCTION	NOTES
N1	33"	54"	SINGLE HUNG	4	OPERABLE	NEW WOOD-CLAD WINDOW
N2	33"	60"	SINGLE HUNG	4	OPERABLE	NEW WOOD-CLAD WINDOW
N3	36"	54"	SINGLE HUNG	4	OPERABLE	NEW WOOD-CLAD WINDOW
N4	36"	60"	SINGLE HUNG	4	OPERABLE	NEW WOOD-CLAD WINDOW
N5	36"	72"	SINGLE HUNG	4	OPERABLE	NEW WOOD-CLAD WINDOW
N6	42"	60"	SINGLE HUNG	4	OPERABLE	NEW WOOD-CLAD WINDOW
N7	42"	66"	SINGLE HUNG	4	OPERABLE	NEW WOOD-CLAD WINDOW
N8	42"	72"	SINGLE HUNG	4	OPERABLE	NEW WOOD-CLAD WINDOW
N9	44"	72"	SINGLE HUNG	4	OPERABLE	NEW WOOD-CLAD WINDOW

DOOR SCHEDULE - NEW CONSTRUCTION - EXT							
TAG	WIDTH	WIDTH OVERALL	HEIGHT	PANELS	LITES	MFR	MODEL
001	3'-0"	3'-0"	7'-0"	1	0	MASONITE	3-PANEL FIBERGLASS DOOR
101	3'-0"	6'-0"	8'-0"	2	6	MIRANDA	ARCH TOP MAHOGANY WOOD DOOR
102	2'-6"	5'-0"	8'-0"	2	8	TBD	4-LITE MAHOGANY WOOD DOOR
103	3'-0"	3'-0"	8'-0"	1	4	TBD	4-LITE MAHOGANY WOOD DOOR

MATERIAL SCHEDULE - NEW CONSTRUCTION			
TAG	DESCRIPTION	COLOR	COMMENTS
M1	5/8" THICK JAMES HARDIE ARTISAN LAP SIDING, SMOOTH, PAINTED	SW 7637 OYSTER WHITE	
M2	TANDO SHAKE, ROUGHSAWN CEDAR SIDING, PRE-FINISHED	DESERT SAND	
M3	JAMES HARDIE TRIM, PAINTED	SW 7005 PURE WHITE	
M4	OLD MILL THIN BRICK, FIELD, SINGLES	CITADEL	
M5	OLD MILL THIN BRICK, SEGMENTAL ARCH, CORNERS	CITADEL	
M6	HORIZONTAL SLAT LOUVER, WOOD, PAINTED	SW 9130 EVERGREEN FOG	TO MATCH ASH GREY
M7	STANDING SEAM METAL ROOF, PRE-FINISHED	ASH GREY	
M8	WOOD X-BALUSTRADE, PAINTED W/ STAINED TOP RAIL	OYSTER WHITE / STAIN	W/ CABLE RAIL, RE: 2.5/A-802
M9	ARCH TOP MAHOGANY WOOD FRENCH DOOR	STAIN, SEMI-TRANSPARENT	
M10	OLD MILL THIN BRICK, BISHOP'S ARCH CHIMNEY, SINGLES	CITADEL	
M11	WOOD FRAMED SCREENED-IN PORCH	SW 7637 OYSTER WHITE	
M12	4-LITE MAHOGANY WOOD DOOR	STAIN, SEMI-TRANSPARENT	
M13	7'-0" x 8'-0" BOARD AND BATTEN SECTIONAL GARAGE DOOR	SW 9130 EVERGREEN FOG	TO MATCH ASH GREY
M14	EXPOSED WOOD ROOF RAFTER TAIL	SW 7005 PURE WHITE	

ELEVATION CLARIFICATIONS	
BASE FLOOD ELEVATION	10'
DESIGN FLOOD ELEVATION (BASE ELEVATION + 1')	11'
PROPOSED FINISHED GRADE	8.5'

JAMES HARDIE TRIM	
TEXTURE	SMOOTH
WIDTH	2-1/2", 3-1/2" 7-1/4"
THICKNESS	3/4", 1-1/2"



1 ELEVATION - SE - PROPOSED
SCALE: 1/8" = 1'-0"

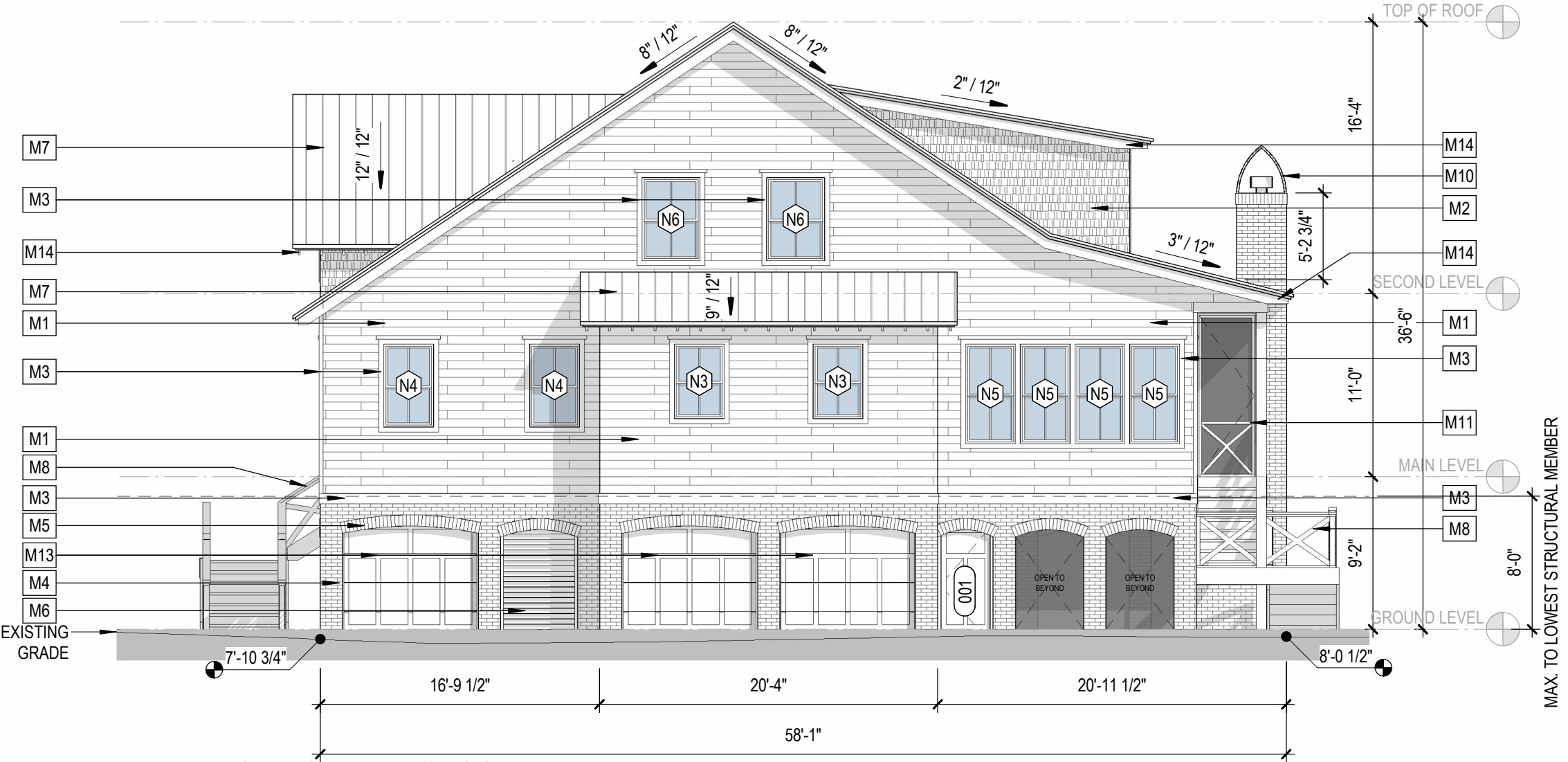
WINDOW SCHEDULE - NEW CONSTRUCTION						
TAG	WIDTH	HEIGHT	TYPE	LITES	FUNCTION	NOTES
N1	33"	54"	SINGLE HUNG	4	OPERABLE	NEW WOOD-CLAD WINDOW
N2	33"	60"	SINGLE HUNG	4	OPERABLE	NEW WOOD-CLAD WINDOW
N3	36"	54"	SINGLE HUNG	4	OPERABLE	NEW WOOD-CLAD WINDOW
N4	36"	60"	SINGLE HUNG	4	OPERABLE	NEW WOOD-CLAD WINDOW
N5	36"	72"	SINGLE HUNG	4	OPERABLE	NEW WOOD-CLAD WINDOW
N6	42"	60"	SINGLE HUNG	4	OPERABLE	NEW WOOD-CLAD WINDOW
N7	42"	66"	SINGLE HUNG	4	OPERABLE	NEW WOOD-CLAD WINDOW
N8	42"	72"	SINGLE HUNG	4	OPERABLE	NEW WOOD-CLAD WINDOW
N9	44"	72"	SINGLE HUNG	4	OPERABLE	NEW WOOD-CLAD WINDOW

DOOR SCHEDULE - NEW CONSTRUCTION - EXT							
TAG	WIDTH	WIDTH OVERALL	HEIGHT	PANELS	LITES	MFR	MODEL
001	3'-0"	3'-0"	7'-0"	1	0	MASONITE	3-PANEL FIBERGLASS DOOR
101	3'-0"	6'-0"	8'-0"	2	6	MIRANDA	ARCH TOP MAHOGANY WOOD DOOR
102	2'-6"	5'-0"	8'-0"	2	8	TBD	4-LITE MAHOGANY WOOD DOOR
103	3'-0"	3'-0"	8'-0"	1	4	TBD	4-LITE MAHOGANY WOOD DOOR

MATERIAL SCHEDULE - NEW CONSTRUCTION			
TAG	DESCRIPTION	COLOR	COMMENTS
M1	5/8" THICK JAMES HARDIE ARTISAN LAP SIDING, SMOOTH, PAINTED	SW 7637 OYSTER WHITE	
M2	TANDO SHAKE, ROUGHSAWN CEDAR SIDING, PRE-FINISHED	DESERT SAND	
M3	JAMES HARDIE TRIM, PAINTED	SW 7005 PURE WHITE	
M4	OLD MILL THIN BRICK, FIELD, SINGLES	CITADEL	
M5	OLD MILL THIN BRICK, SEGMENTAL ARCH, CORNERS	CITADEL	
M6	HORIZONTAL SLAT LOUVER, WOOD, PAINTED	SW 9130 EVERGREEN FOG	TO MATCH ASH GREY
M7	STANDING SEAM METAL ROOF, PRE-FINISHED	ASH GREY	
M8	WOOD X-BALLUSTRADE, PAINTED W/ STAINED TOP RAIL	OYSTER WHITE / STAIN	W/ CABLE RAIL, RE: 2.5/A-802
M9	ARCH TOP MAHOGANY WOOD FRENCH DOOR	STAIN, SEMI-TRANSPARENT	
M10	OLD MILL THIN BRICK, BISHOP'S ARCH CHIMNEY, SINGLES	CITADEL	
M11	WOOD FRAMED SCREENED-IN PORCH	SW 7637 OYSTER WHITE	
M12	4-LITE MAHOGANY WOOD DOOR	STAIN, SEMI-TRANSPARENT	
M13	7'-0" x 8'-0" BOARD AND BATTEN SECTIONAL GARAGE DOOR	SW 9130 EVERGREEN FOG	TO MATCH ASH GREY
M14	EXPOSED WOOD ROOF RAFTER TAIL	SW 7005 PURE WHITE	

ELEVATION CLARIFICATIONS	
BASE FLOOD ELEVATION	10'
DESIGN FLOOD ELEVATION (BASE ELEVATION + 1')	11'
PROPOSED FINISHED GRADE	8.5'

JAMES HARDIE TRIM	
TEXTURE	SMOOTH
WIDTH	2-1/2", 3-1/2" 7-1/4"
THICKNESS	3/4", 1-1/2"



1 ELEVATION - SW - PROPOSED

SCALE: 1/8" = 1'-0"

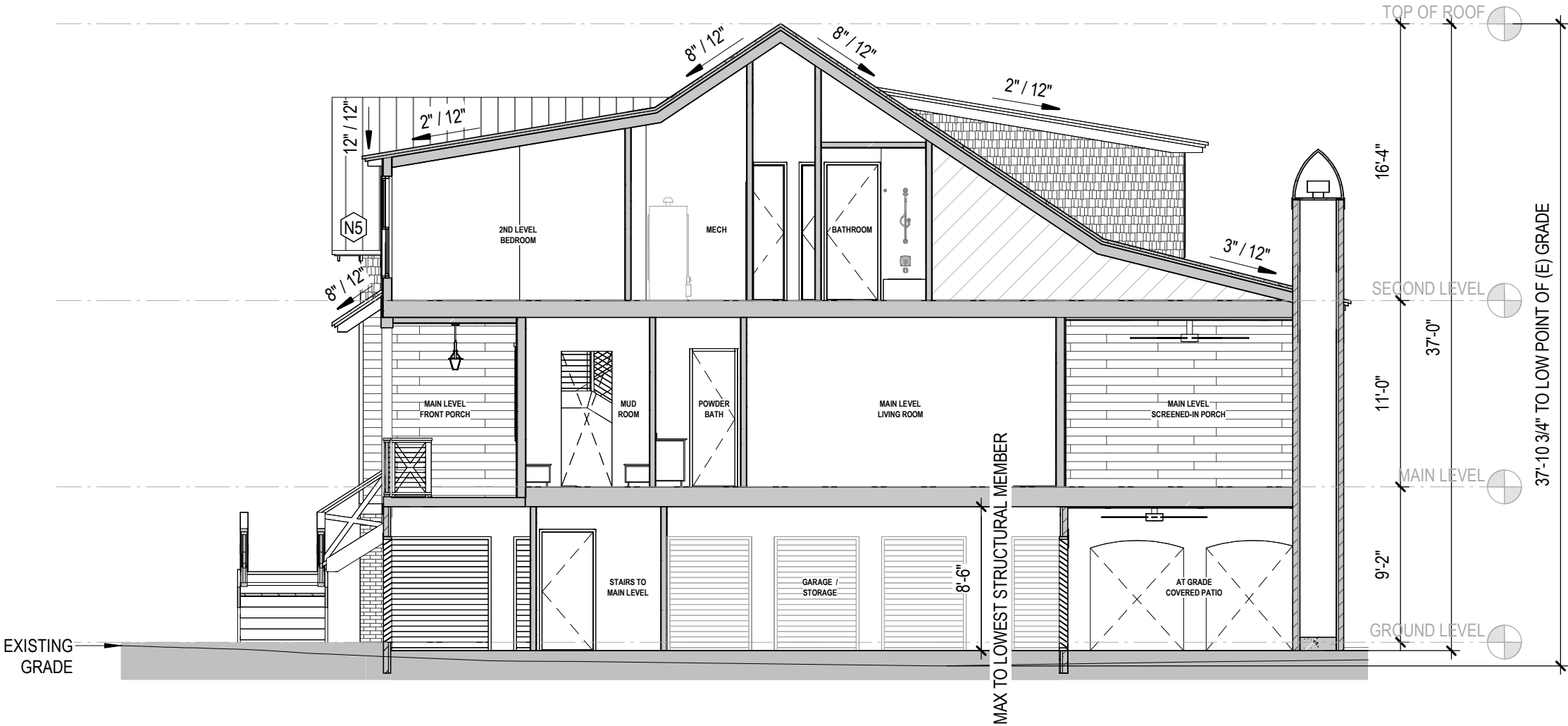
WINDOW SCHEDULE - NEW CONSTRUCTION						
TAG	WIDTH	HEIGHT	TYPE	LITES	FUNCTION	NOTES
N1	33"	54"	SINGLE HUNG	4	OPERABLE	NEW WOOD-CLAD WINDOW
N2	33"	60"	SINGLE HUNG	4	OPERABLE	NEW WOOD-CLAD WINDOW
N3	36"	54"	SINGLE HUNG	4	OPERABLE	NEW WOOD-CLAD WINDOW
N4	36"	60"	SINGLE HUNG	4	OPERABLE	NEW WOOD-CLAD WINDOW
N5	36"	72"	SINGLE HUNG	4	OPERABLE	NEW WOOD-CLAD WINDOW
N6	42"	60"	SINGLE HUNG	4	OPERABLE	NEW WOOD-CLAD WINDOW
N7	42"	66"	SINGLE HUNG	4	OPERABLE	NEW WOOD-CLAD WINDOW
N8	42"	72"	SINGLE HUNG	4	OPERABLE	NEW WOOD-CLAD WINDOW
N9	44"	72"	SINGLE HUNG	4	OPERABLE	NEW WOOD-CLAD WINDOW

DOOR SCHEDULE - NEW CONSTRUCTION - EXT							
TAG	WIDTH	WIDTH OVERALL	HEIGHT	PANELS	LITES	MFR	MODEL
001	3'-0"	3'-0"	7'-0"	1	0	MASONITE	3-PANEL FIBERGLASS DOOR
101	3'-0"	6'-0"	8'-0"	2	6	MIRANDA	ARCH TOP MAHOGANY WOOD DOOR
102	2'-6"	5'-0"	8'-0"	2	8	TBD	4-LITE MAHOGANY WOOD DOOR
103	3'-0"	3'-0"	8'-0"	1	4	TBD	4-LITE MAHOGANY WOOD DOOR

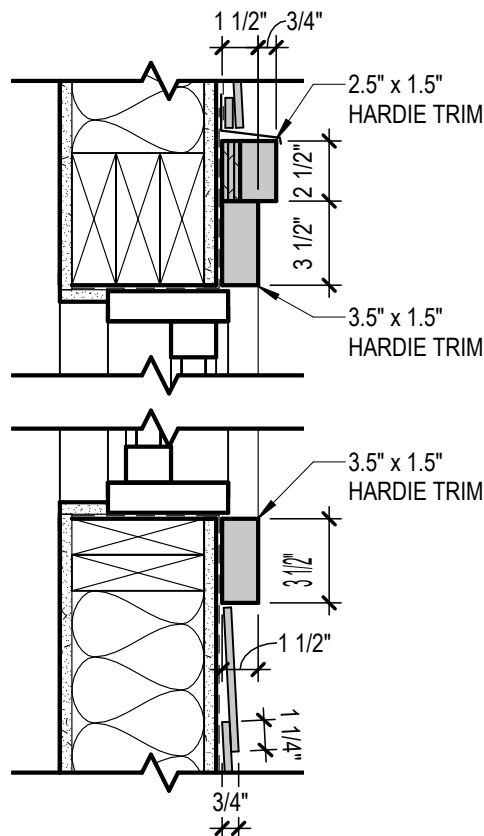
MATERIAL SCHEDULE - NEW CONSTRUCTION			
TAG	DESCRIPTION	COLOR	COMMENTS
M1	5/8" THICK JAMES HARDIE ARTISAN LAP SIDING, SMOOTH, PAINTED	SW 7637 OYSTER WHITE	
M2	TANDO SHAKE, ROUGHSAWN CEDAR SIDING, PRE-FINISHED	DESERT SAND	
M3	JAMES HARDIE TRIM, PAINTED	SW 7005 PURE WHITE	
M4	OLD MILL THIN BRICK, FIELD, SINGLES	CITADEL	
M5	OLD MILL THIN BRICK, SEGMENTAL ARCH, CORNERS	CITADEL	
M6	HORIZONTAL SLAT LOUVER, WOOD, PAINTED	SW 9130 EVERGREEN FOG	TO MATCH ASH GREY
M7	STANDING SEAM METAL ROOF, PRE-FINISHED	ASH GREY	
M8	WOOD X-BALLUSTRADE, PAINTED W/ STAINED TOP RAIL	OYSTER WHITE / STAIN	W/ CABLE RAIL, RE: 2.5/A-802
M9	ARCH TOP MAHOGANY WOOD FRENCH DOOR	STAIN, SEMI-TRANSPARENT	
M10	OLD MILL THIN BRICK, BISHOP'S ARCH CHIMNEY, SINGLES	CITADEL	
M11	WOOD FRAMED SCREENED-IN PORCH	SW 7637 OYSTER WHITE	
M12	4-LITE MAHOGANY WOOD DOOR	STAIN, SEMI-TRANSPARENT	
M13	7'-0" x 8'-0" BOARD AND BATTEN SECTIONAL GARAGE DOOR	SW 9130 EVERGREEN FOG	TO MATCH ASH GREY
M14	EXPOSED WOOD ROOF RAFTER TAIL	SW 7005 PURE WHITE	

ELEVATION CLARIFICATIONS	
BASE FLOOD ELEVATION	10'
DESIGN FLOOD ELEVATION (BASE ELEVATION + 1')	11'
PROPOSED FINISHED GRADE	8.5'

JAMES HARDIE TRIM	
TEXTURE	SMOOTH
WIDTH	2-1/2", 3-1/2" 7-1/4"
THICKNESS	3/4", 1-1/2"

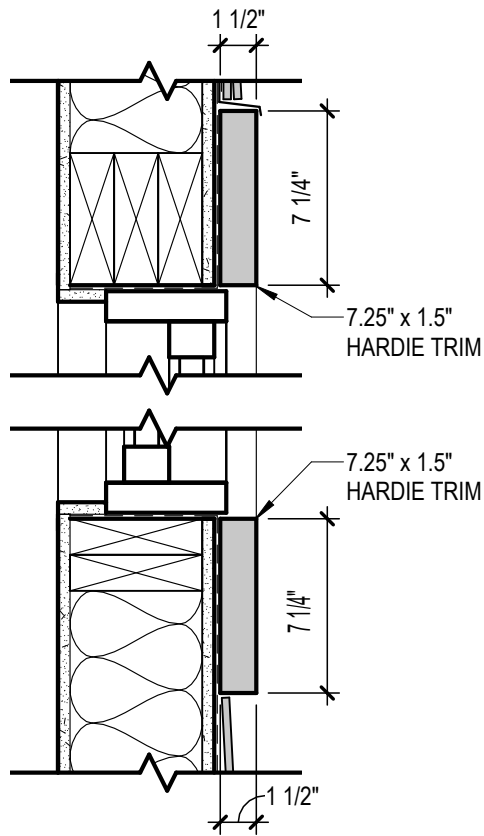


1 SECTION - LONGITUDINAL - PROPOSED
SCALE: 1/8" = 1'-0"



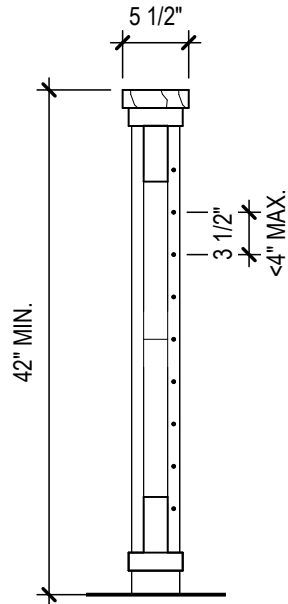
4.5 TYP. WINDOW - SECT.

SCALE: 1 1/2" = 1'-0"



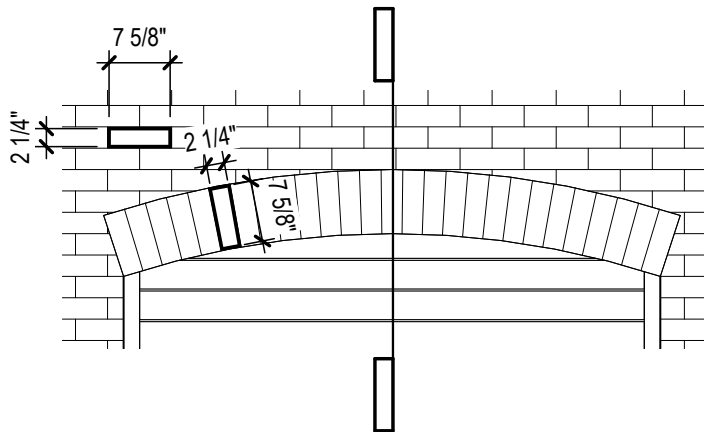
3.5 DORMER WINDOW - SECT.

SCALE: 1 1/2" = 1'-0"



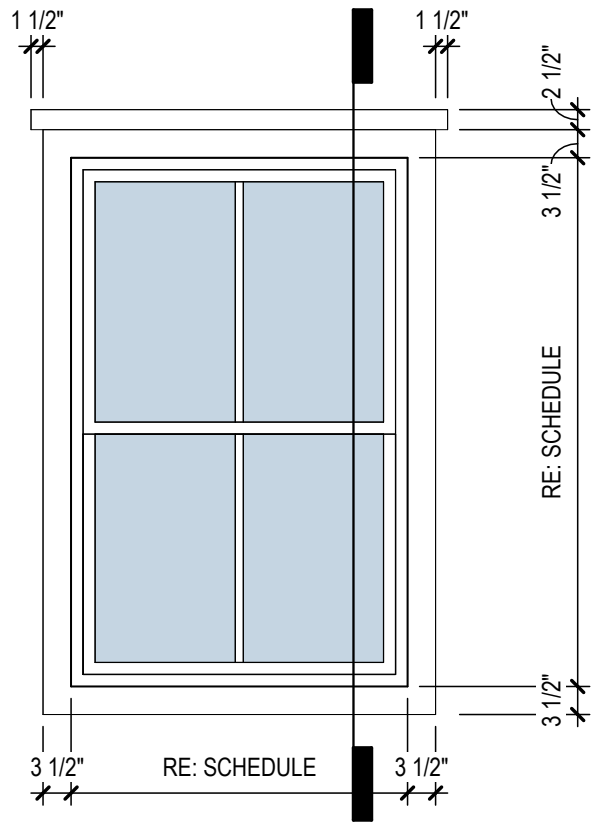
2.5 TYP. X-BALUSTRADE - SECT.

SCALE: 3/4" = 1'-0"



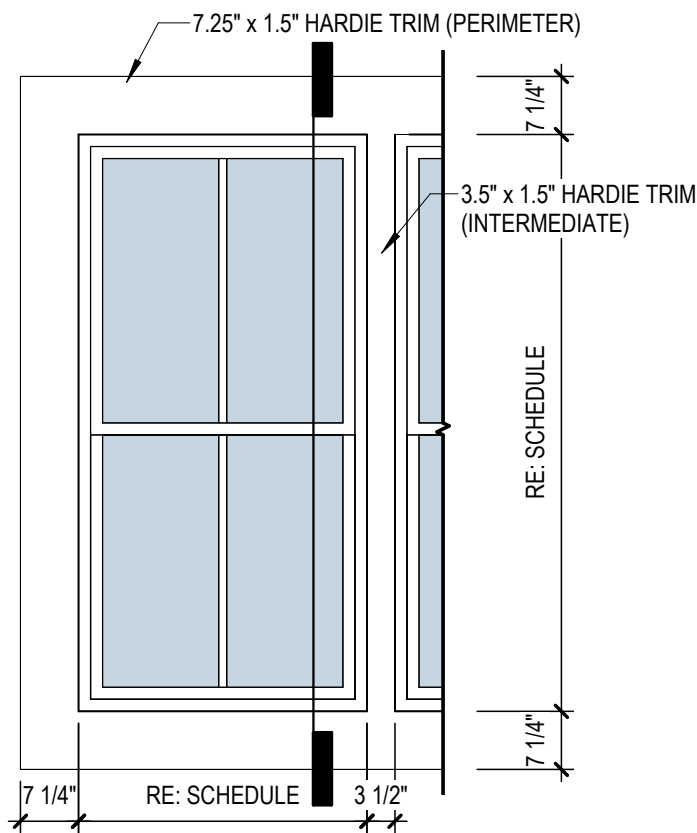
1.5 SEGMENTAL ARCH - ELEV.

SCALE: 1/2" = 1'-0"



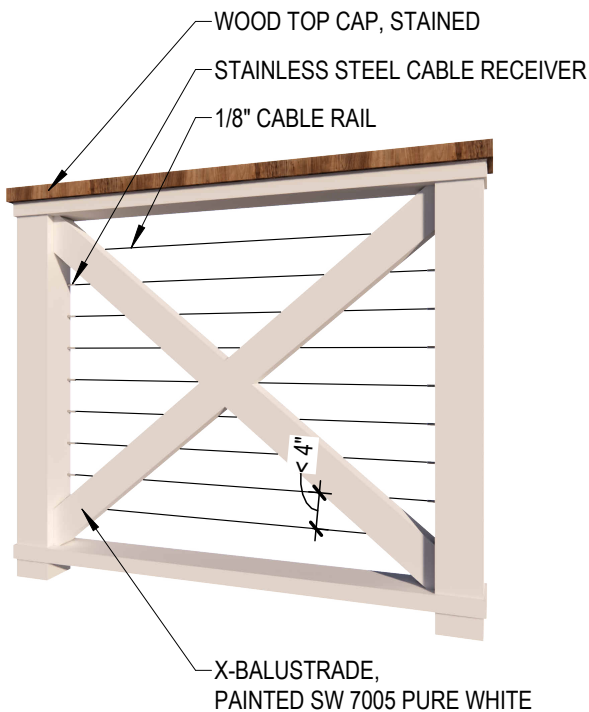
4 TYP. WINDOW - ELEV.

SCALE: 1/2" = 1'-0"



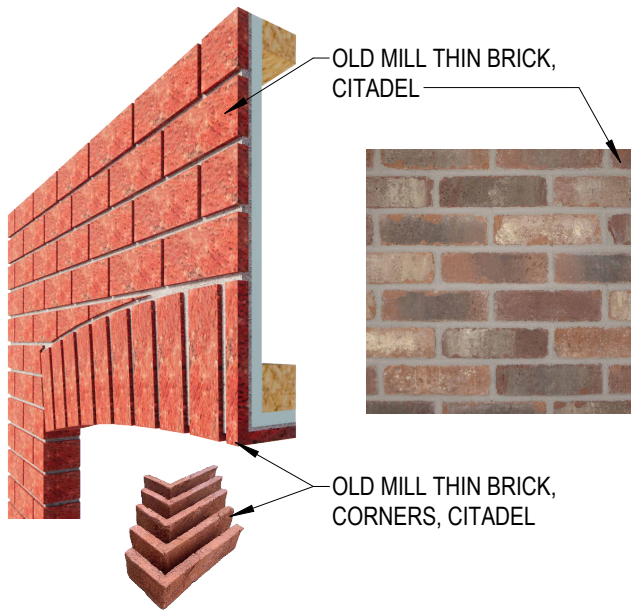
3 DORMER WINDOW - ELEV.

SCALE: 1/2" = 1'-0"



2 X-BALUSTRADE - PERSP.

SCALE: 1 1/2" = 1'-0"



1 THIN BRICK ARCH - PERSP.

SCALE: 1 1/2" = 1'-0"



NEW CONSTRUCTION - FRONT PERSPECTIVE



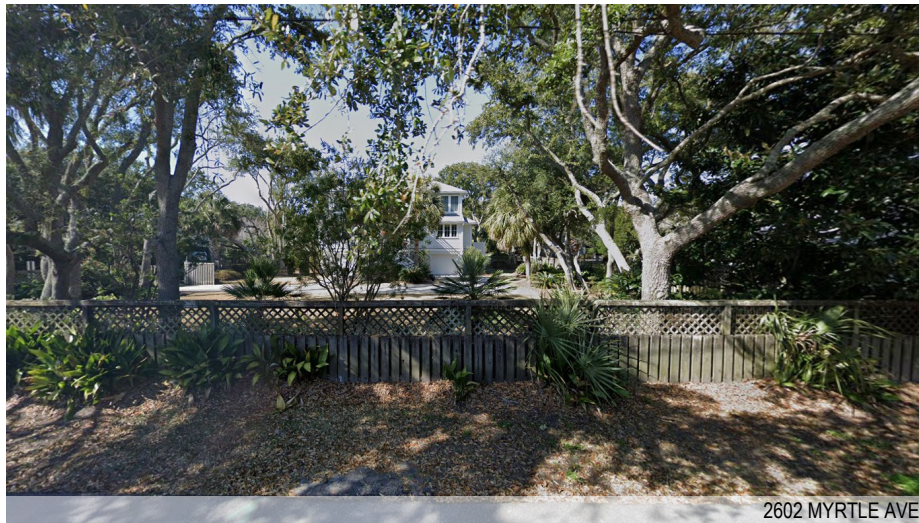
HISTORIC COTTAGE - FRONT PERSPECTIVE

NEW CONSTRUCTION - REAR PERSPECTIVE



HISTORIC COTTAGE - REAR PERSPECTIVE





2602 MYRTLE AVE



2608 MYRTLE AVE



2614 MYRTLE AVE

MYRTLE AVE STREETSCAPE



2614 MYRTLE AVE



2608 MYRTLE AVE



2602 MYRTLE AVE

GOLDBUG AVE STREETSCAPE



2602 GOLDBUG AVE



2608 GOLDBUG AVE



2614 GOLDBUG AVE

GOLDBUG AVE STREETSCAPE - ACROSS STREET