

scale: 3/16" = 1'-0"

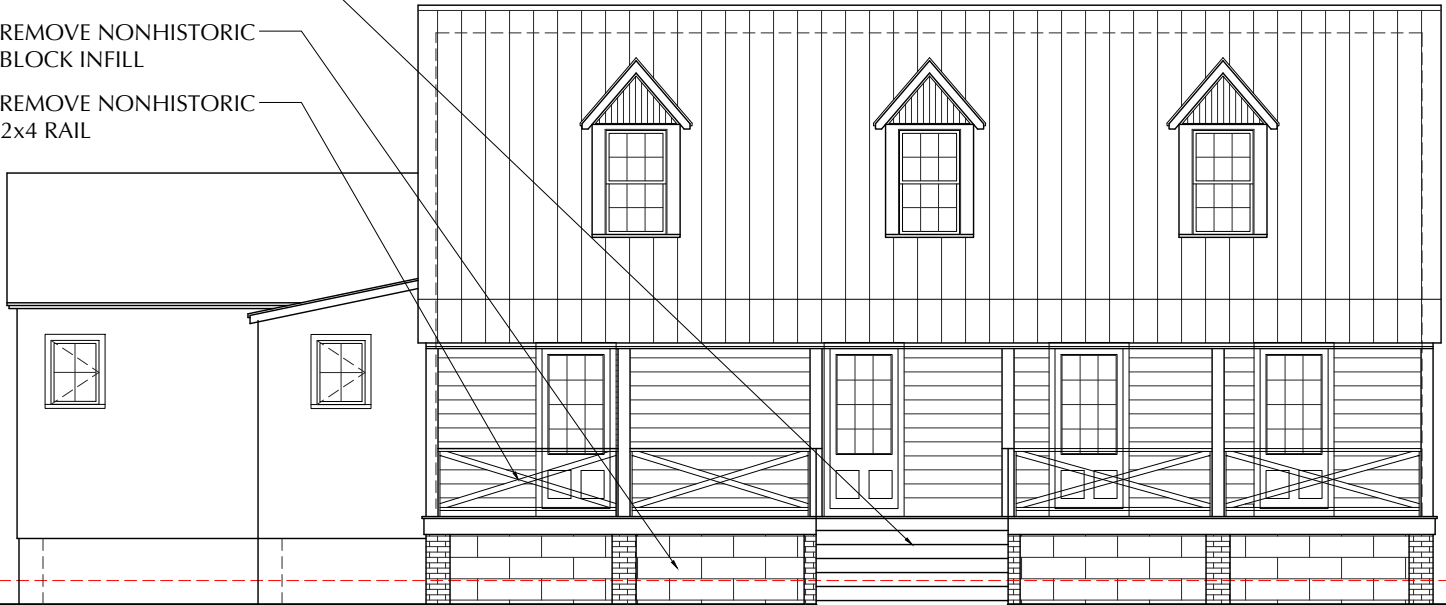
PROPOSED SITE PLAN

scale: 3/16" = 1'-0"

- REMOVE NONHISTORIC
CONCRETE STAIR
- REMOVE NONHISTORIC
BLOCK INFILL
- REMOVE NONHISTORIC
2x4 RAIL

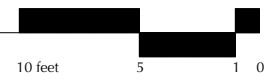
13'-0"
first floor

AE-10
9'-0"
existing grade



A. SOUTH ELEVATION : EXISTING

scale 1/8"=1'-0"



- NEW RAIL REPLICATED
FROM ORIGINAL FOUND
DURING RESTORATION
- 1x 4 VERTICAL LOUVERS
- (2) NEW WOOD STAIRS

13'-0"
first floor

AE-10
9'-0"
existing grade



A. SOUTH ELEVATION : PROPOSED

scale 1/8"=1'-0"

