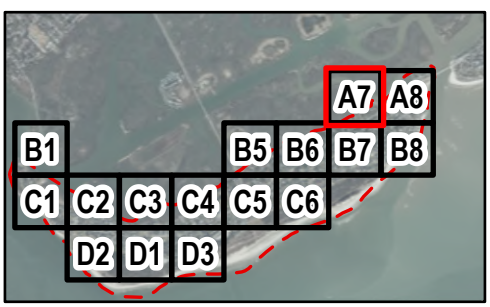


NOTES:

1. Background 2020 aerial imagery collected by Kucera International. Imagery is managed by Adam DeMars, South Carolina State GIS Coordinator and hosted by ESRI.
2. Drainage infrastructure locations are approximate.
3. Flood depths presented herein are representative of the maximum flood depth simulated for this scenario.
4. Flood depths presented herein within the immediate cross sections of open channels or ditches are not representative of actual conditions due to model limitations.
5. Condition of existing infrastructure (i.e., clogged or damaged) was assumed directly from the inventory of the existing drainage infrastructure (**Appendix A**).
6. **Appendices B.9-B.16** assume a future land cover condition (see full report for details).



### Legend

- ┌─┐ Study Boundary
- ▲ Outfall
- Inlet, End of Pipe, Manhole, or Junction
- Stormwater Pipe
- Stormwater Ditch
- Roadway

Maximum Flood Depth

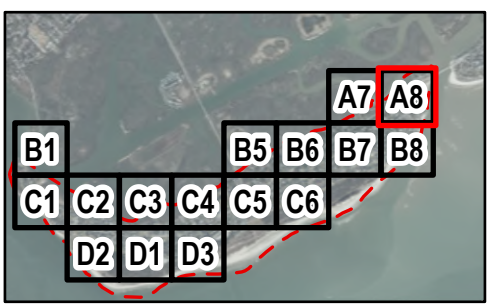
> 3.00 ft

0.10 ft



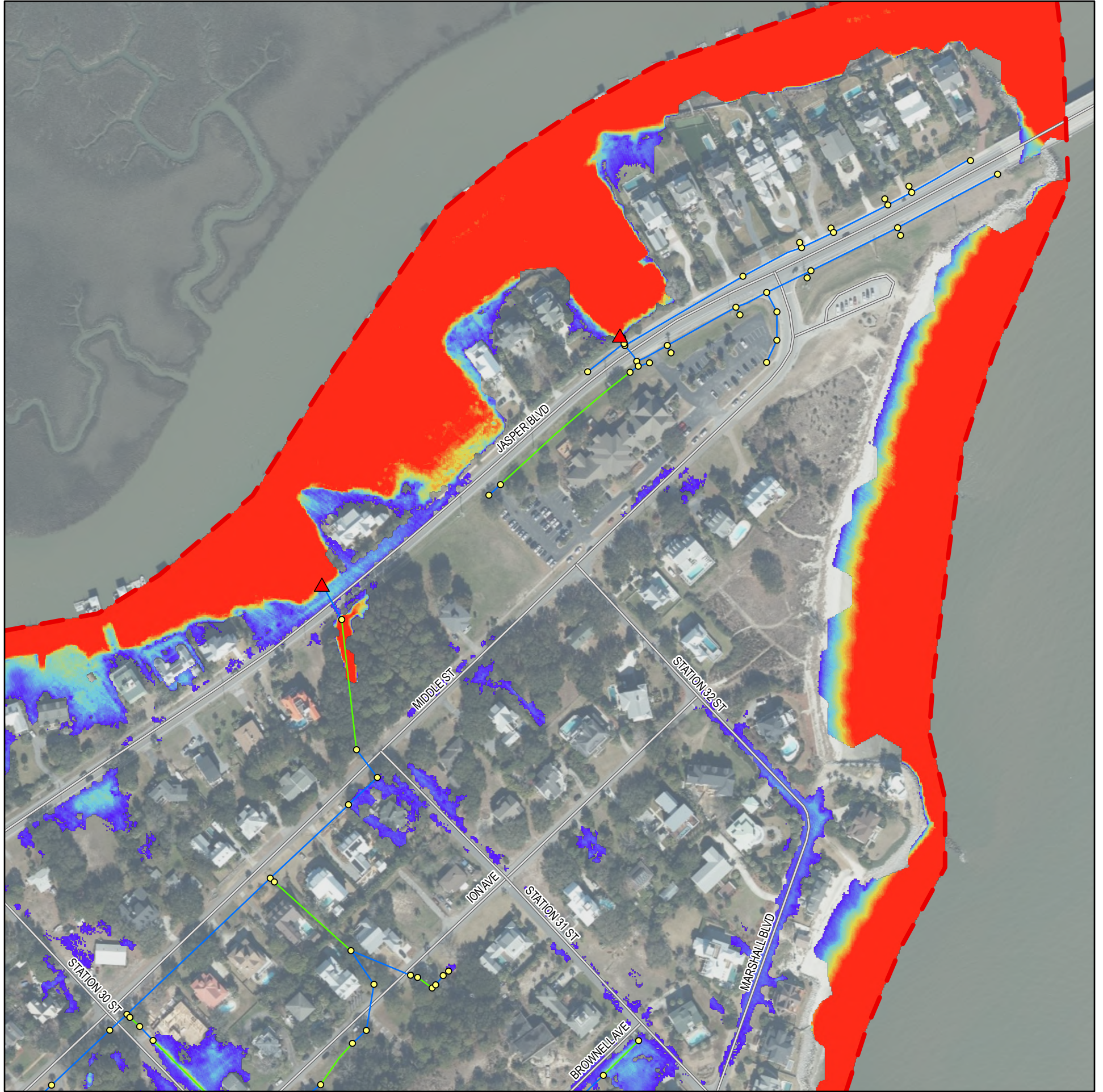
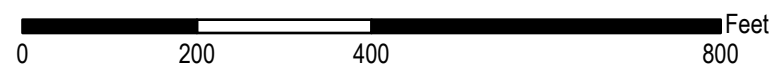
NOTES:

1. Background 2020 aerial imagery collected by Kucera International. Imagery is managed by Adam DeMars, South Carolina State GIS Coordinator and hosted by ESRI.
2. Drainage infrastructure locations are approximate.
3. Flood depths presented herein are representative of the maximum flood depth simulated for this scenario.
4. Flood depths presented herein within the immediate cross sections of open channels or ditches are not representative of actual conditions due to model limitations.
5. Condition of existing infrastructure (i.e., clogged or damaged) was assumed directly from the inventory of the existing drainage infrastructure (**Appendix A**).
6. **Appendices B.9-B.16** assume a future land cover condition (see full report for details).



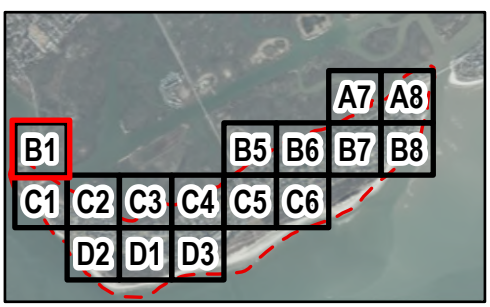
**Legend**

- Study Boundary
  - Outfall
  - Inlet, End of Pipe, Manhole, or Junction
  - Stormwater Pipe
  - Stormwater Ditch
  - Roadway
- Maximum Flood Depth
- > 3.00 ft
  - 0.10 ft



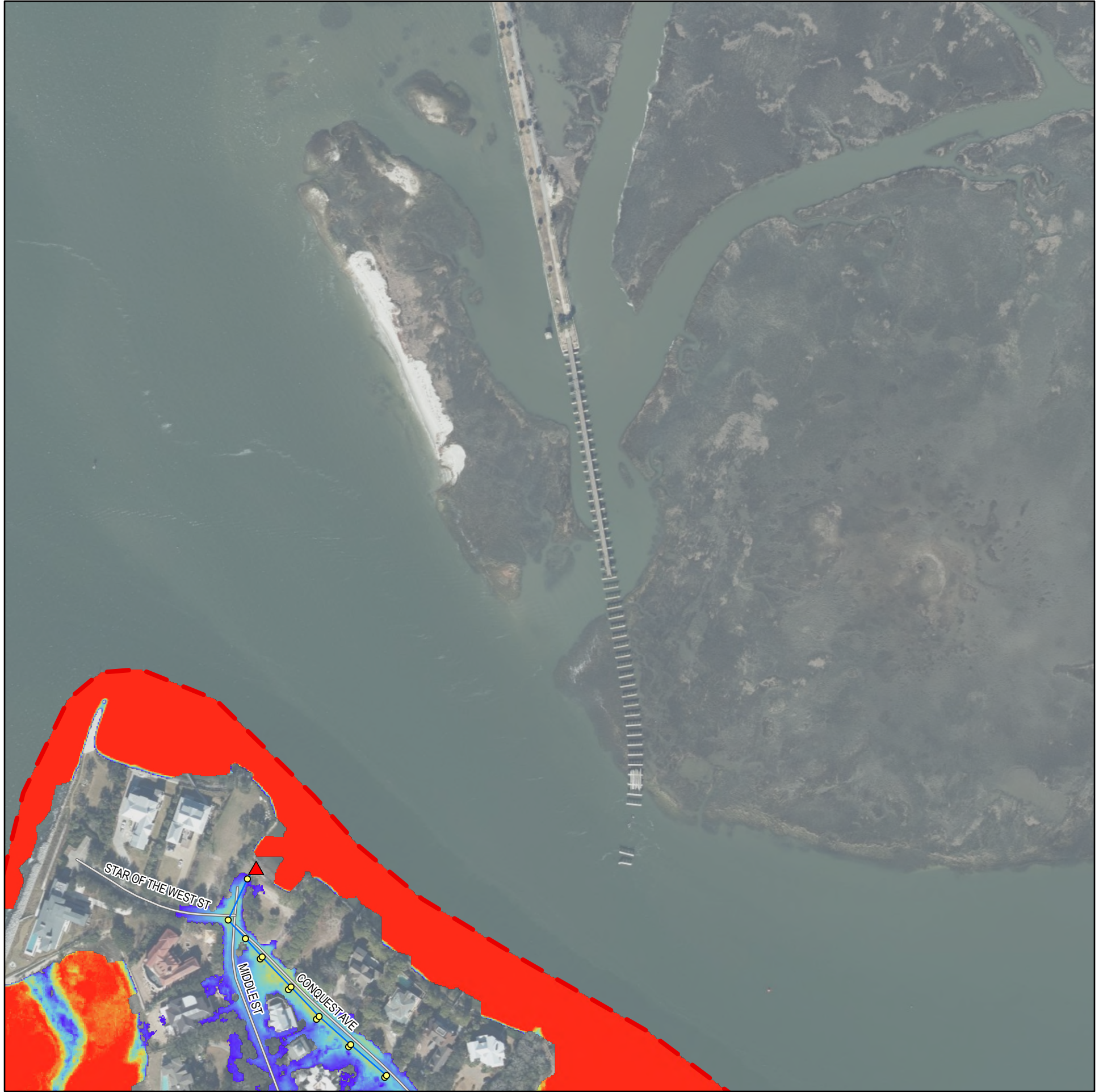
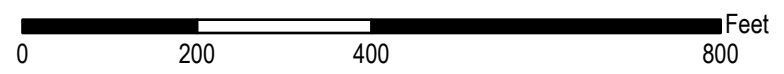
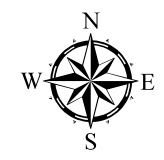
NOTES:

1. Background 2020 aerial imagery collected by Kucera International. Imagery is managed by Adam DeMars, South Carolina State GIS Coordinator and hosted by ESRI.
2. Drainage infrastructure locations are approximate.
3. Flood depths presented herein are representative of the maximum flood depth simulated for this scenario.
4. Flood depths presented herein within the immediate cross sections of open channels or ditches are not representative of actual conditions due to model limitations.
5. Condition of existing infrastructure (i.e., clogged or damaged) was assumed directly from the inventory of the existing drainage infrastructure (**Appendix A**).
6. **Appendices B.9-B.16** assume a future land cover condition (see full report for details).



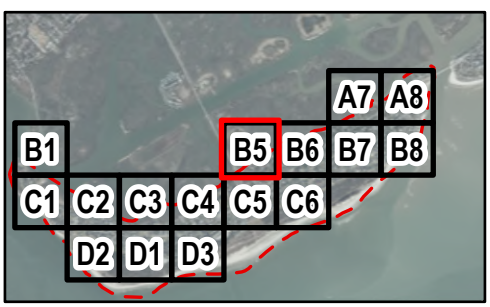
**Legend**

- Study Boundary
  - Outfall
  - Inlet, End of Pipe, Manhole, or Junction
  - Stormwater Pipe
  - Stormwater Ditch
  - Roadway
- Maximum Flood Depth
- 
- █ > 3.00 ft
  - █ 0.10 ft



NOTES:

1. Background 2020 aerial imagery collected by Kucera International. Imagery is managed by Adam DeMars, South Carolina State GIS Coordinator and hosted by ESRI.
2. Drainage infrastructure locations are approximate.
3. Flood depths presented herein are representative of the maximum flood depth simulated for this scenario.
4. Flood depths presented herein within the immediate cross sections of open channels or ditches are not representative of actual conditions due to model limitations.
5. Condition of existing infrastructure (i.e., clogged or damaged) was assumed directly from the inventory of the existing drainage infrastructure (**Appendix A**).
6. **Appendices B.9-B.16** assume a future land cover condition (see full report for details).



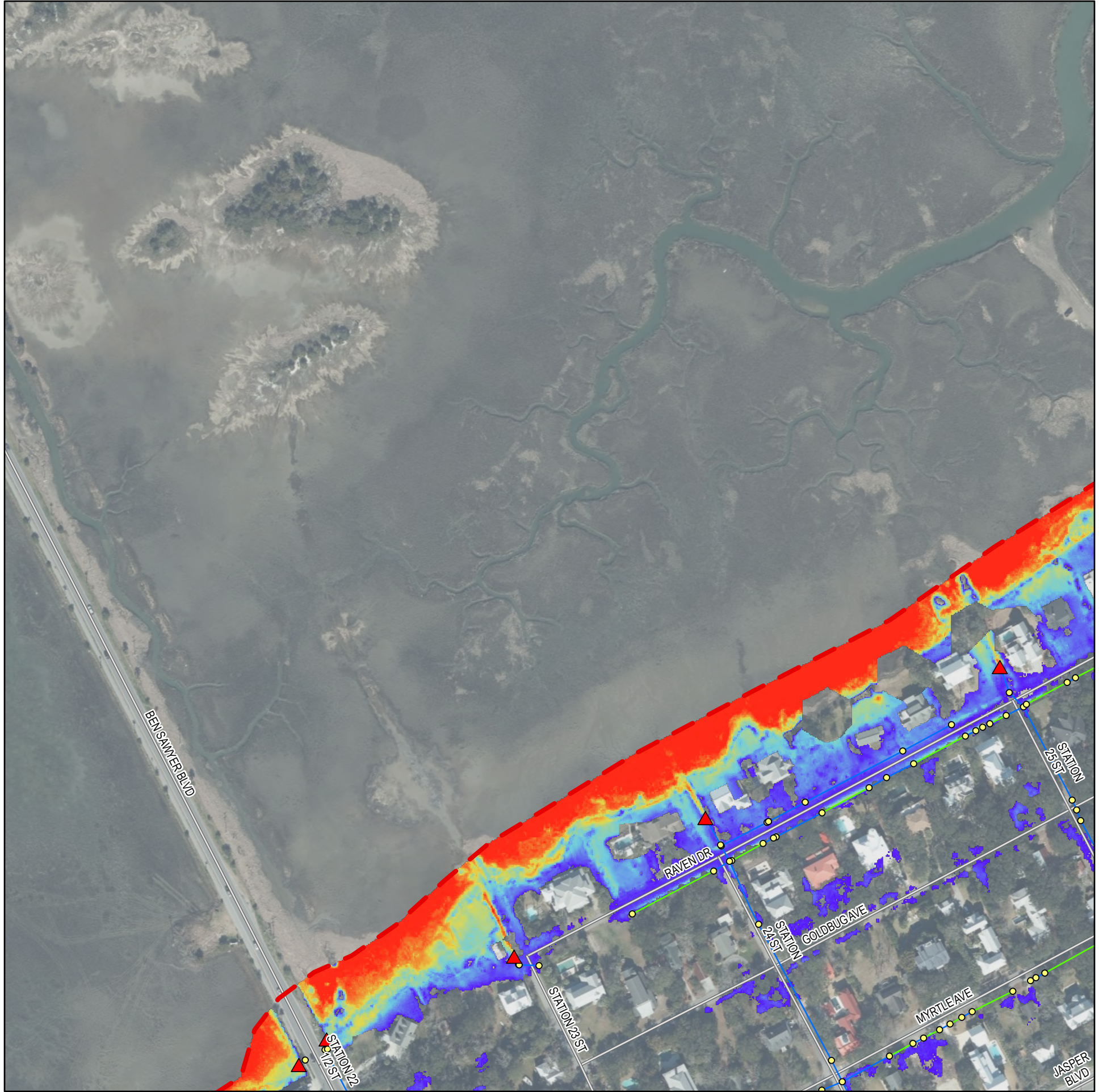
### Legend

- ┌─┐ Study Boundary
- ▲ Outfall
- Inlet, End of Pipe, Manhole, or Junction
- Stormwater Pipe
- Stormwater Ditch
- Roadway

Maximum Flood Depth

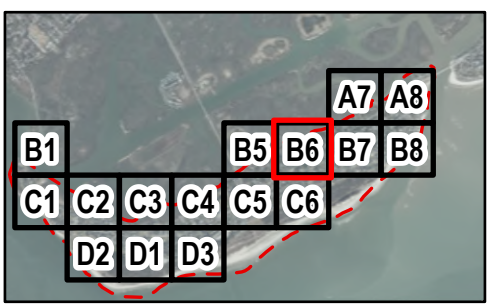
> 3.00 ft

0.10 ft



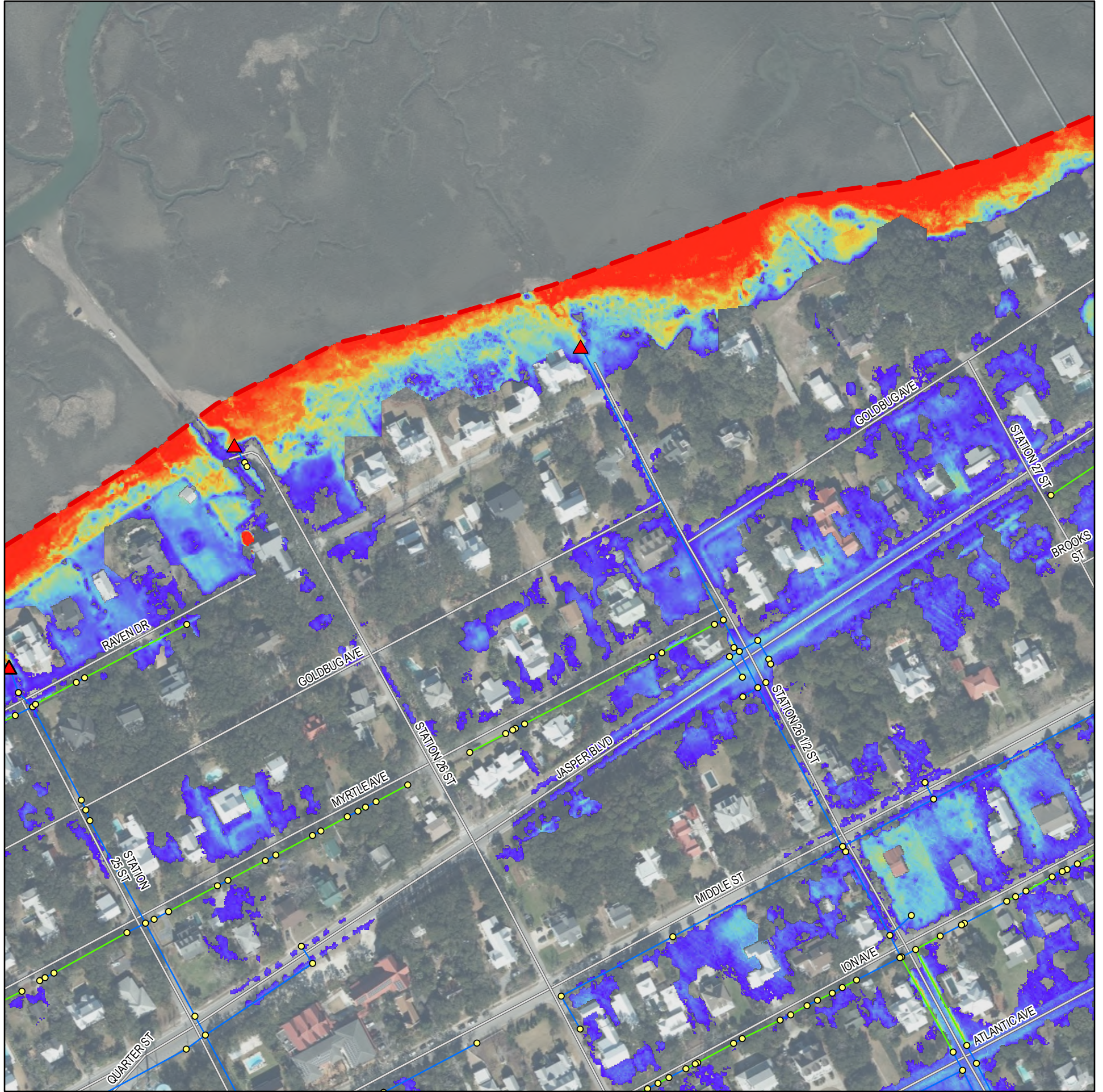
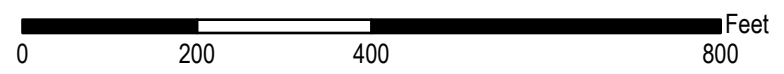
NOTES:

1. Background 2020 aerial imagery collected by Kucera International. Imagery is managed by Adam DeMars, South Carolina State GIS Coordinator and hosted by ESRI.
2. Drainage infrastructure locations are approximate.
3. Flood depths presented herein are representative of the maximum flood depth simulated for this scenario.
4. Flood depths presented herein within the immediate cross sections of open channels or ditches are not representative of actual conditions due to model limitations.
5. Condition of existing infrastructure (i.e., clogged or damaged) was assumed directly from the inventory of the existing drainage infrastructure (**Appendix A**).
6. **Appendices B.9-B.16** assume a future land cover condition (see full report for details).



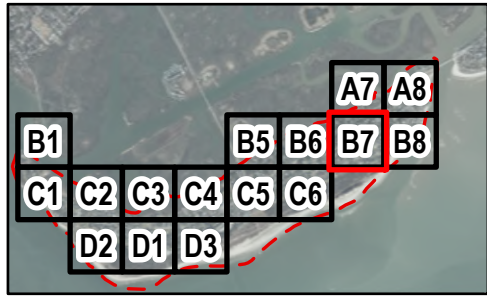
**Legend**

- Study Boundary
  - Outfall
  - Inlet, End of Pipe, Manhole, or Junction
  - Stormwater Pipe
  - Stormwater Ditch
  - Roadway
- Maximum Flood Depth
- > 3.00 ft
  - 0.10 ft



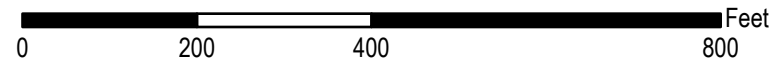
NOTES:

1. Background 2020 aerial imagery collected by Kucera International. Imagery is managed by Adam DeMars, South Carolina State GIS Coordinator and hosted by ESRI.
2. Drainage infrastructure locations are approximate.
3. Flood depths presented herein are representative of the maximum flood depth simulated for this scenario.
4. Flood depths presented herein within the immediate cross sections of open channels or ditches are not representative of actual conditions due to model limitations.
5. Condition of existing infrastructure (i.e., clogged or damaged) was assumed directly from the inventory of the existing drainage infrastructure (**Appendix A**).
6. **Appendices B.9-B.16** assume a future land cover condition (see full report for details).



**Legend**

- Study Boundary
  - Outfall
  - Inlet, End of Pipe, Manhole, or Junction
  - Stormwater Pipe
  - Stormwater Ditch
  - Roadway
- Maximum Flood Depth
- > 3.00 ft
  - 0.10 ft



**Town of Sullivan's Island, SC**  
**Island-Wide Stormwater Master Plan and Infrastructure Improvement Strategy**

Existing Conditions Flood Analysis  
 Rainfall: Future 100-Year (11.44") SC Long  
 Tidal Conditions: Typical Tide with SLR (5.65 ft NAVD88)

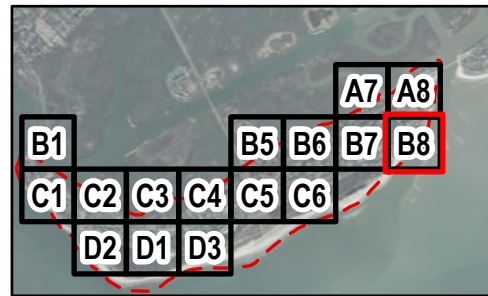
Appendix B.15

Sector B8

Page 7 of 16

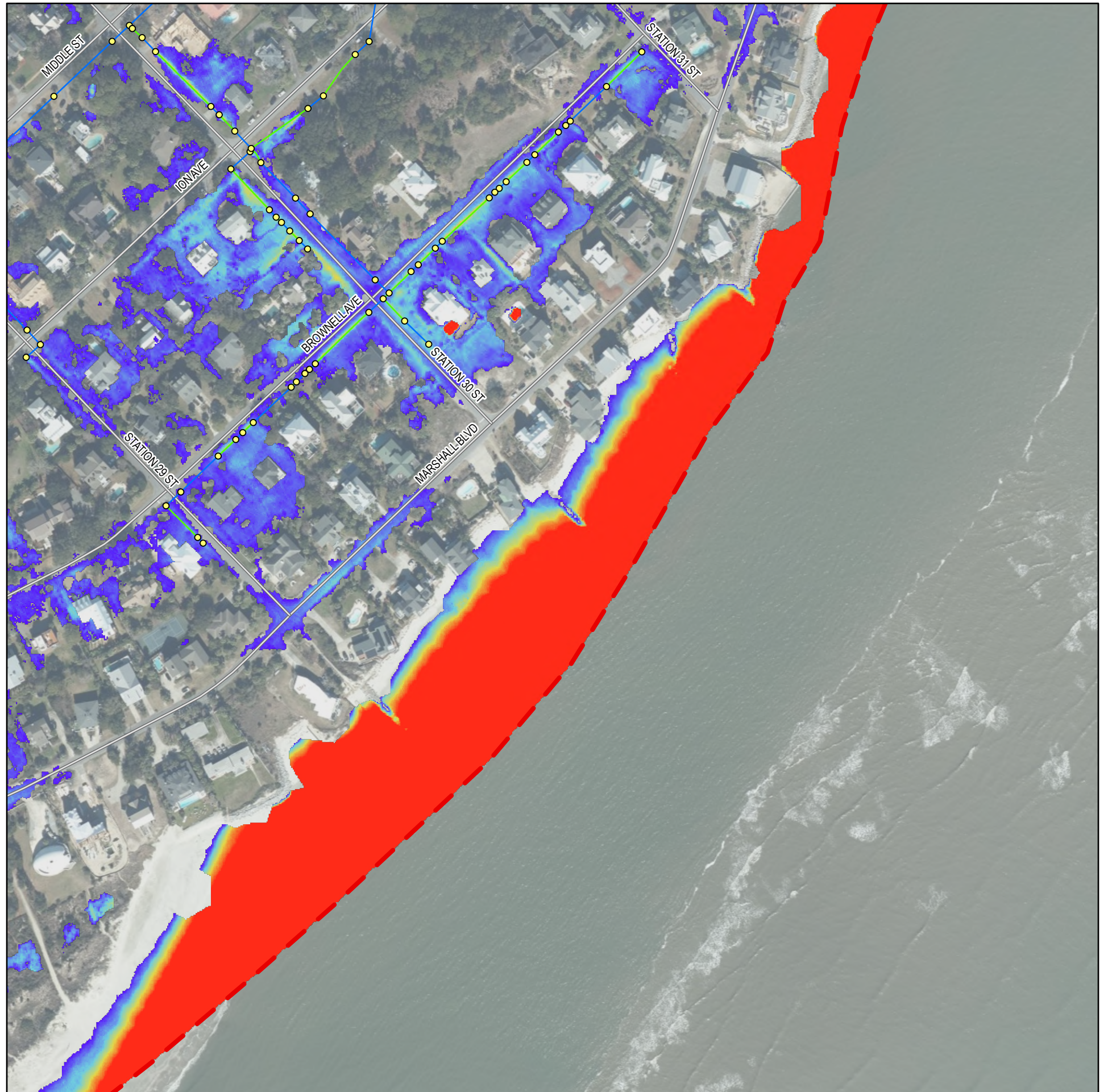
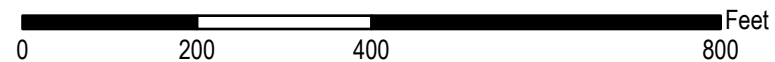
NOTES:

1. Background 2020 aerial imagery collected by Kucera International. Imagery is managed by Adam DeMars, South Carolina State GIS Coordinator and hosted by ESRI.
2. Drainage infrastructure locations are approximate.
3. Flood depths presented herein are representative of the maximum flood depth simulated for this scenario.
4. Flood depths presented herein within the immediate cross sections of open channels or ditches are not representative of actual conditions due to model limitations.
5. Condition of existing infrastructure (i.e., clogged or damaged) was assumed directly from the inventory of the existing drainage infrastructure (**Appendix A**).
6. **Appendices B.9-B.16** assume a future land cover condition (see full report for details).



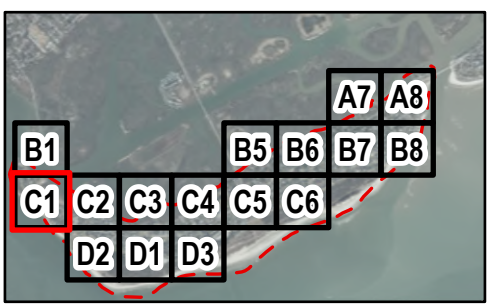
**Legend**

- Study Boundary
  - Outfall
  - Inlet, End of Pipe, Manhole, or Junction
  - Stormwater Pipe
  - Stormwater Ditch
  - Roadway
- Maximum Flood Depth
- > 3.00 ft
  - 0.10 ft



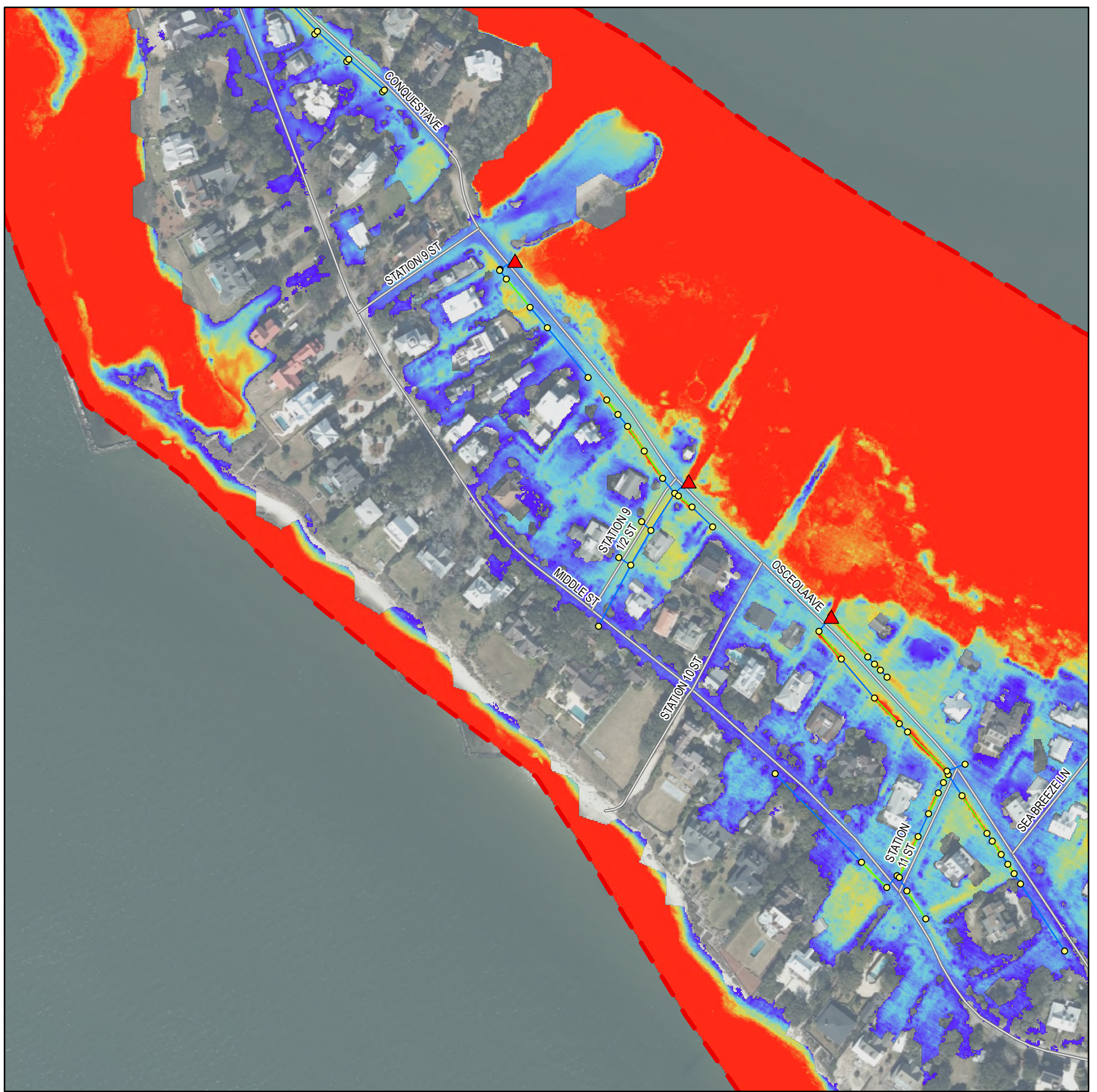
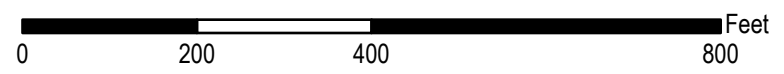
NOTES:

1. Background 2020 aerial imagery collected by Kucera International. Imagery is managed by Adam DeMars, South Carolina State GIS Coordinator and hosted by ESRI.
2. Drainage infrastructure locations are approximate.
3. Flood depths presented herein are representative of the maximum flood depth simulated for this scenario.
4. Flood depths presented herein within the immediate cross sections of open channels or ditches are not representative of actual conditions due to model limitations.
5. Condition of existing infrastructure (i.e., clogged or damaged) was assumed directly from the inventory of the existing drainage infrastructure (**Appendix A**).
6. **Appendices B.9-B.16** assume a future land cover condition (see full report for details).



**Legend**

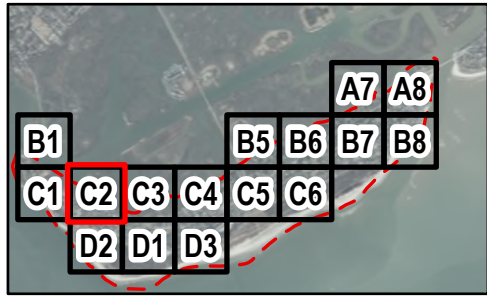
- Study Boundary
  - Outfall
  - Inlet, End of Pipe, Manhole, or Junction
  - Stormwater Pipe
  - Stormwater Ditch
  - Roadway
- Maximum Flood Depth
- > 3.00 ft
  - 0.10 ft





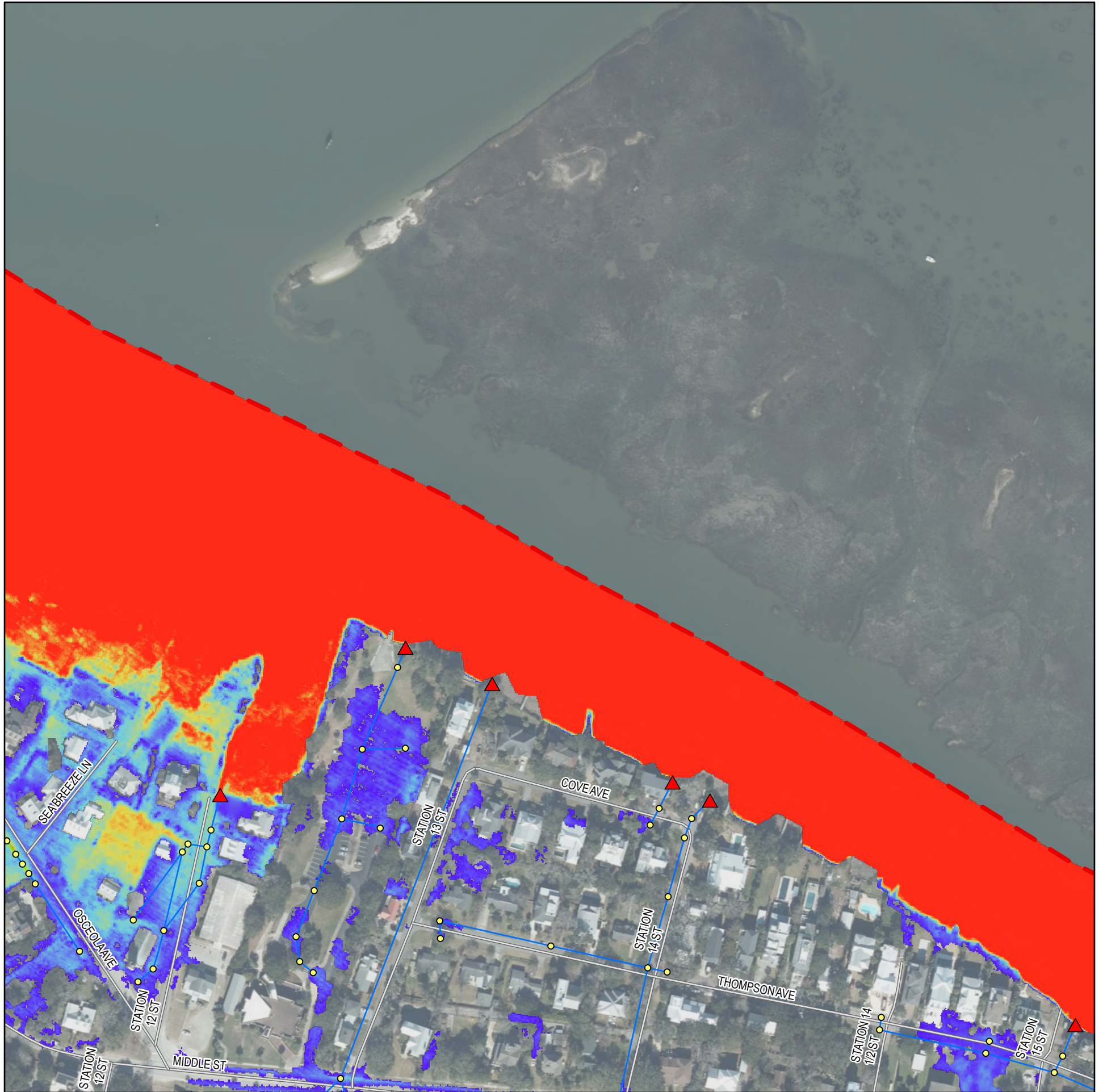
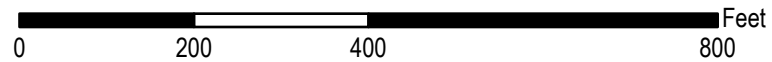
NOTES:

1. Background 2020 aerial imagery collected by Kucera International. Imagery is managed by Adam DeMars, South Carolina State GIS Coordinator and hosted by ESRI.
2. Drainage infrastructure locations are approximate.
3. Flood depths presented herein are representative of the maximum flood depth simulated for this scenario.
4. Flood depths presented herein within the immediate cross sections of open channels or ditches are not representative of actual conditions due to model limitations.
5. Condition of existing infrastructure (i.e., clogged or damaged) was assumed directly from the inventory of the existing drainage infrastructure (**Appendix A**).
6. **Appendices B.9-B.16** assume a future land cover condition (see full report for details).



**Legend**

- Study Boundary
  - Outfall
  - Inlet, End of Pipe, Manhole, or Junction
  - Stormwater Pipe
  - Stormwater Ditch
  - Roadway
- Maximum Flood Depth
- 
- > 3.00 ft  
0.10 ft



NOTES:

1. Background 2020 aerial imagery collected by Kucera International. Imagery is managed by Adam DeMars, South Carolina State GIS Coordinator and hosted by ESRI.
2. Drainage infrastructure locations are approximate.
3. Flood depths presented herein are representative of the maximum flood depth simulated for this scenario.
4. Flood depths presented herein within the immediate cross sections of open channels or ditches are not representative of actual conditions due to model limitations.
5. Condition of existing infrastructure (i.e., clogged or damaged) was assumed directly from the inventory of the existing drainage infrastructure (**Appendix A**).
6. **Appendices B.9-B.16** assume a future land cover condition (see full report for details).



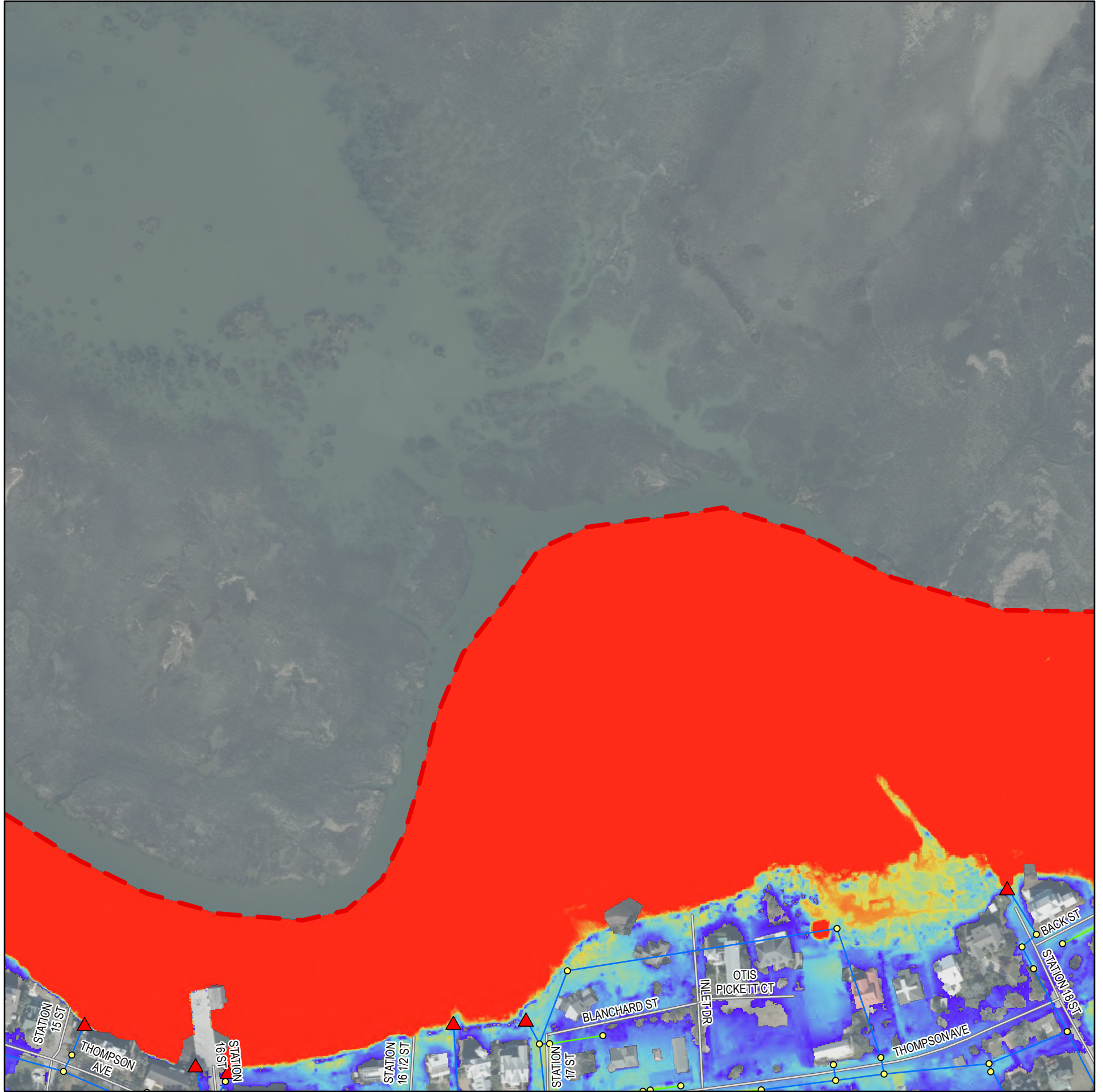
### Legend

- ┌─┐ Study Boundary
- ▲ Outfall
- Inlet, End of Pipe, Manhole, or Junction
- Stormwater Pipe
- Stormwater Ditch
- Roadway

Maximum Flood Depth

> 3.00 ft

0.10 ft



NOTES:

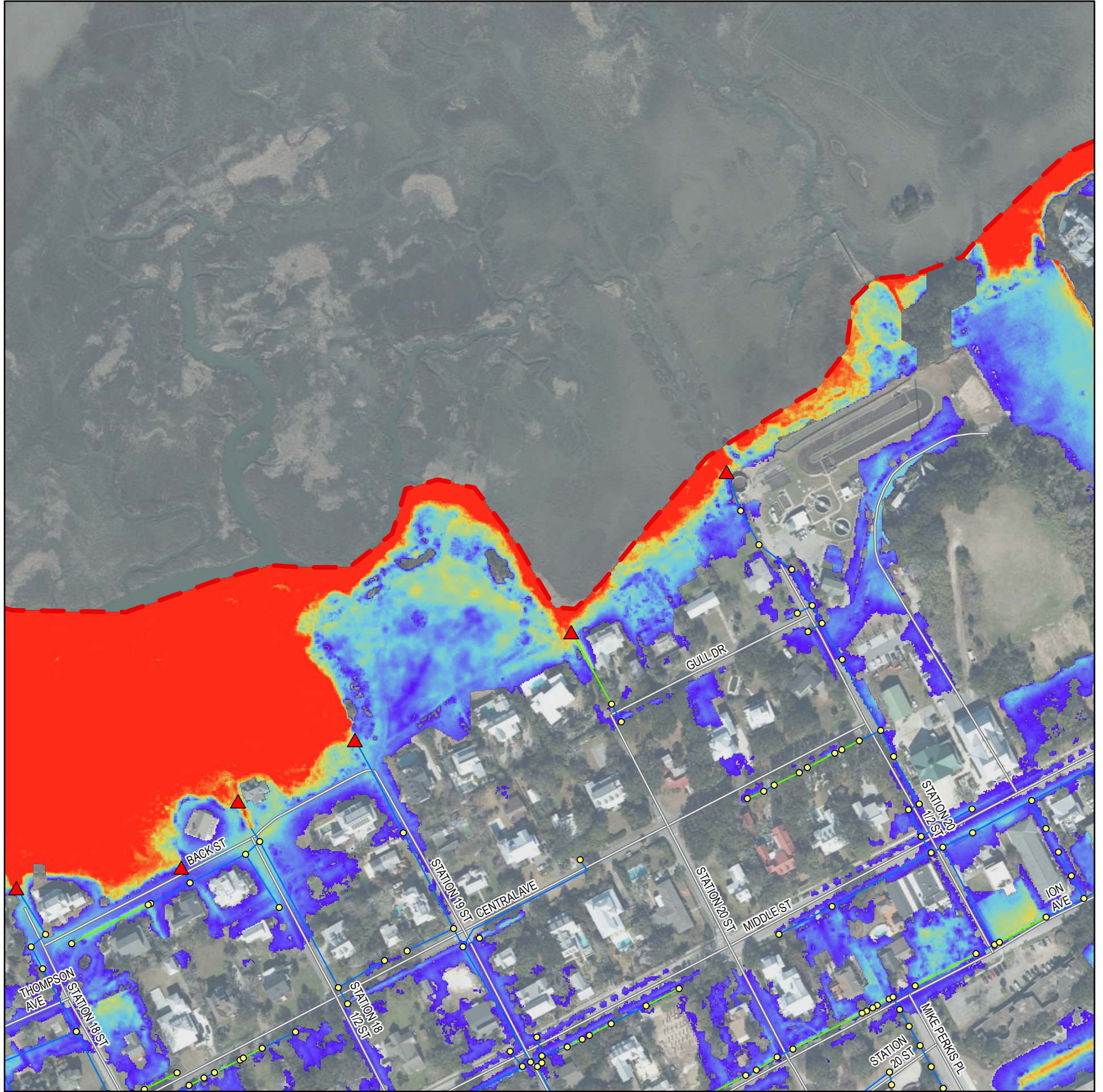
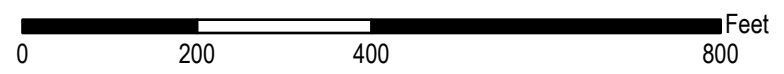
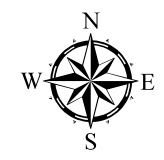
1. Background 2020 aerial imagery collected by Kucera International. Imagery is managed by Adam DeMars, South Carolina State GIS Coordinator and hosted by ESRI.
2. Drainage infrastructure locations are approximate.
3. Flood depths presented herein are representative of the maximum flood depth simulated for this scenario.
4. Flood depths presented herein within the immediate cross sections of open channels or ditches are not representative of actual conditions due to model limitations.
5. Condition of existing infrastructure (i.e., clogged or damaged) was assumed directly from the inventory of the existing drainage infrastructure (**Appendix A**).
6. **Appendices B.9-B.16** assume a future land cover condition (see full report for details).



**Legend**

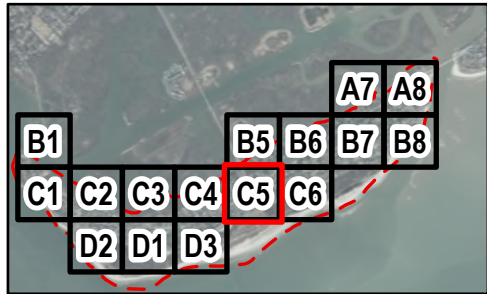
- └─┘ Study Boundary
  - ▲ Outfall
  - Inlet, End of Pipe, Manhole, or Junction
  - Stormwater Pipe
  - Stormwater Ditch
  - Roadway
- Maximum Flood Depth
- > 3.00 ft

0.10 ft



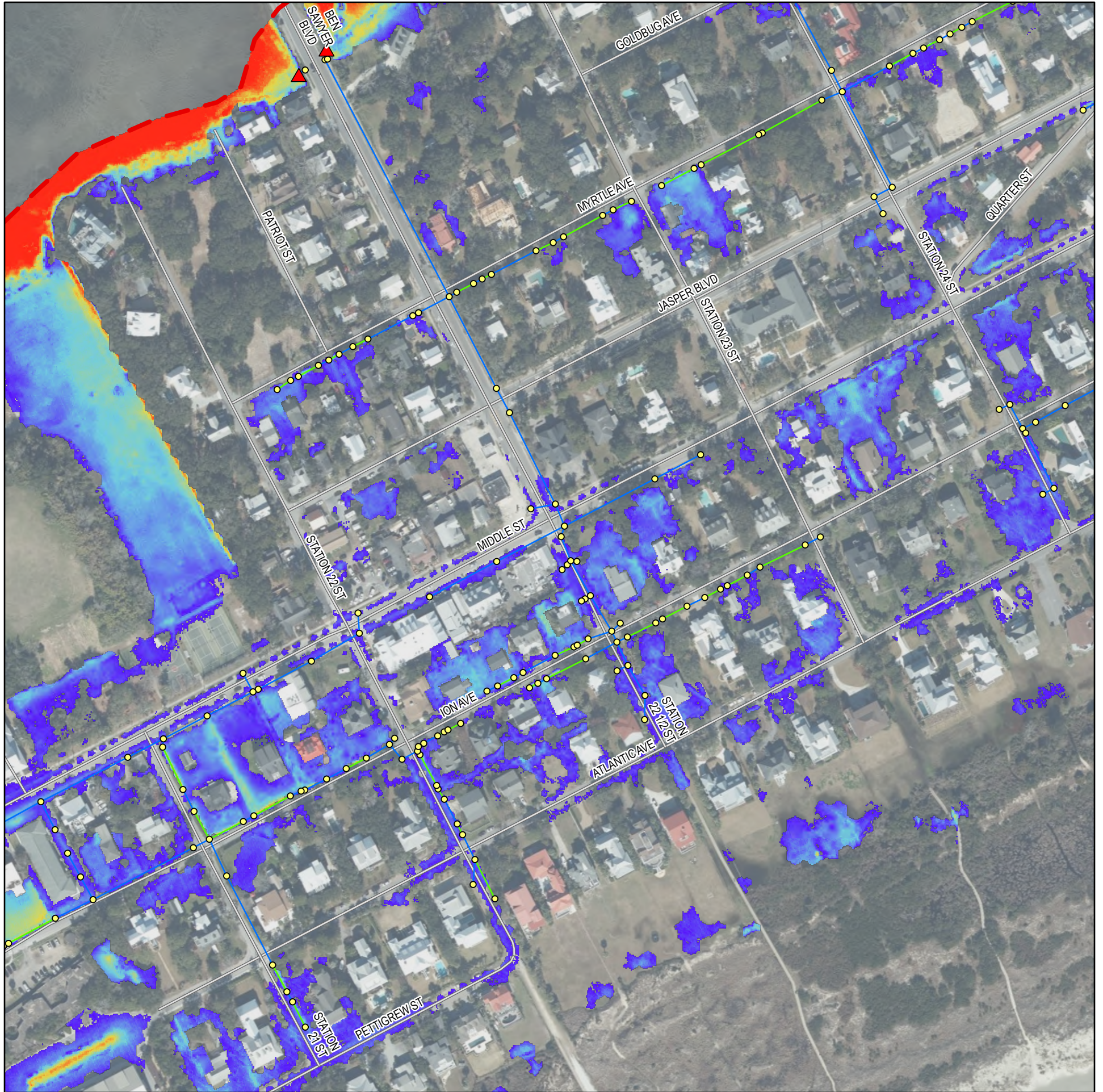
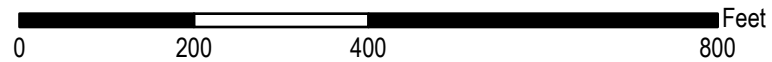
NOTES:

1. Background 2020 aerial imagery collected by Kucera International. Imagery is managed by Adam DeMars, South Carolina State GIS Coordinator and hosted by ESRI.
2. Drainage infrastructure locations are approximate.
3. Flood depths presented herein are representative of the maximum flood depth simulated for this scenario.
4. Flood depths presented herein within the immediate cross sections of open channels or ditches are not representative of actual conditions due to model limitations.
5. Condition of existing infrastructure (i.e., clogged or damaged) was assumed directly from the inventory of the existing drainage infrastructure (**Appendix A**).
6. **Appendices B.9-B.16** assume a future land cover condition (see full report for details).



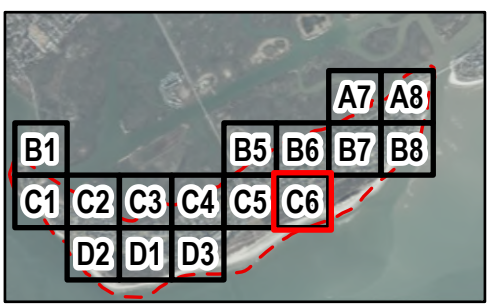
**Legend**

- Study Boundary
  - Outfall
  - Inlet, End of Pipe, Manhole, or Junction
  - Stormwater Pipe
  - Stormwater Ditch
  - Roadway
- Maximum Flood Depth
- 
- > 3.00 ft  
0.10 ft



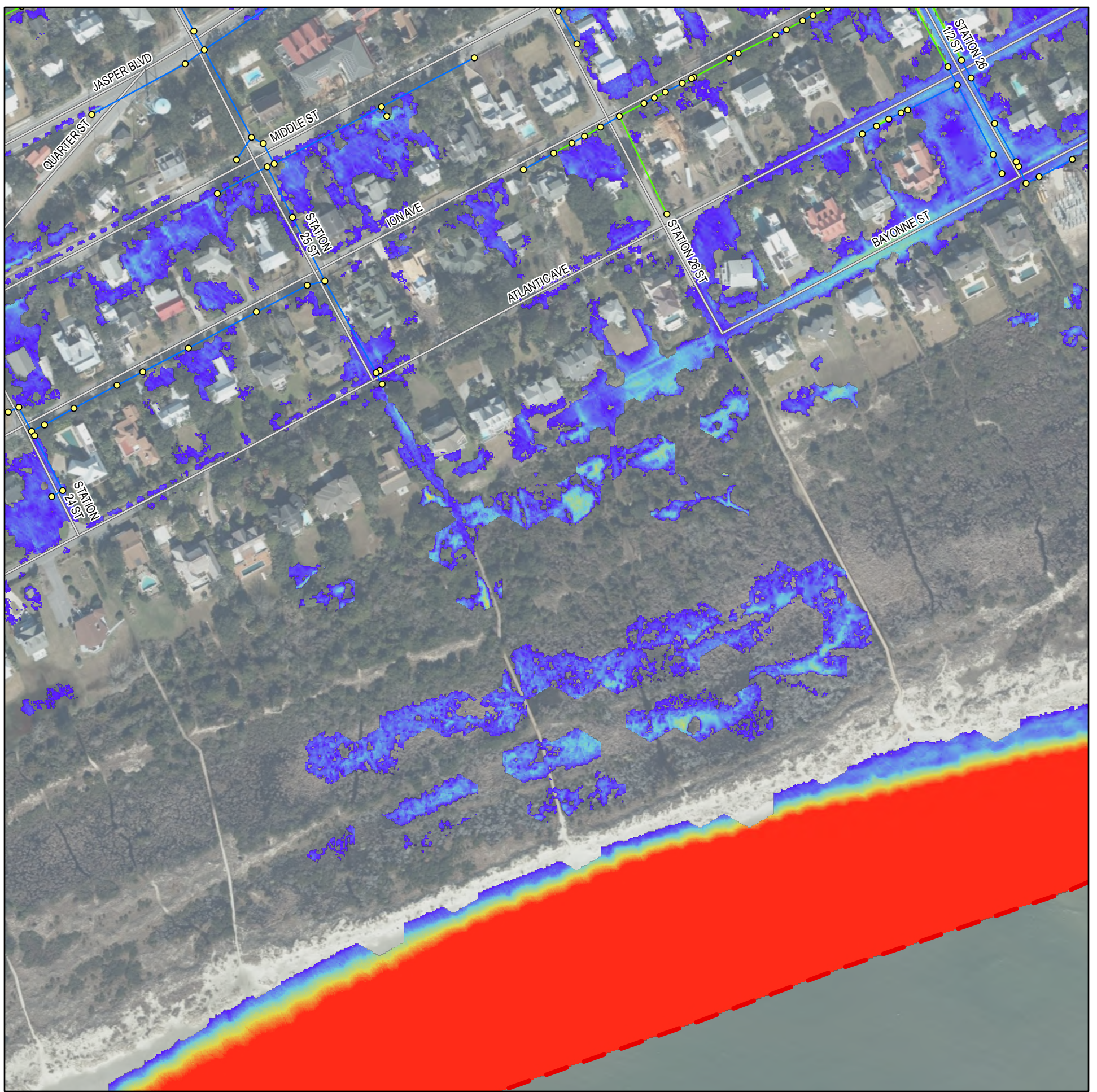
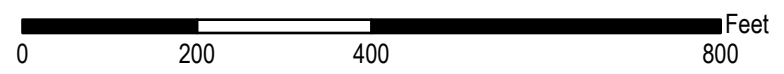
NOTES:

1. Background 2020 aerial imagery collected by Kucera International. Imagery is managed by Adam DeMars, South Carolina State GIS Coordinator and hosted by ESRI.
2. Drainage infrastructure locations are approximate.
3. Flood depths presented herein are representative of the maximum flood depth simulated for this scenario.
4. Flood depths presented herein within the immediate cross sections of open channels or ditches are not representative of actual conditions due to model limitations.
5. Condition of existing infrastructure (i.e., clogged or damaged) was assumed directly from the inventory of the existing drainage infrastructure (**Appendix A**).
6. **Appendices B.9-B.16** assume a future land cover condition (see full report for details).



**Legend**

- Study Boundary
  - Outfall
  - Inlet, End of Pipe, Manhole, or Junction
  - Stormwater Pipe
  - Stormwater Ditch
  - Roadway
- Maximum Flood Depth
- > 3.00 ft
  - 0.10 ft



**Town of Sullivan's Island, SC**  
**Island-Wide Stormwater Master Plan and Infrastructure Improvement Strategy**

Existing Conditions Flood Analysis  
 Rainfall: Future 100-Year (11.44") SC Long  
 Tidal Conditions: Typical Tide with SLR (5.65 ft NAVD88)

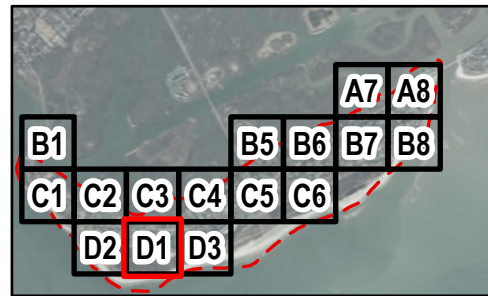
Appendix B.15

Sector D1

Page 14 of 16

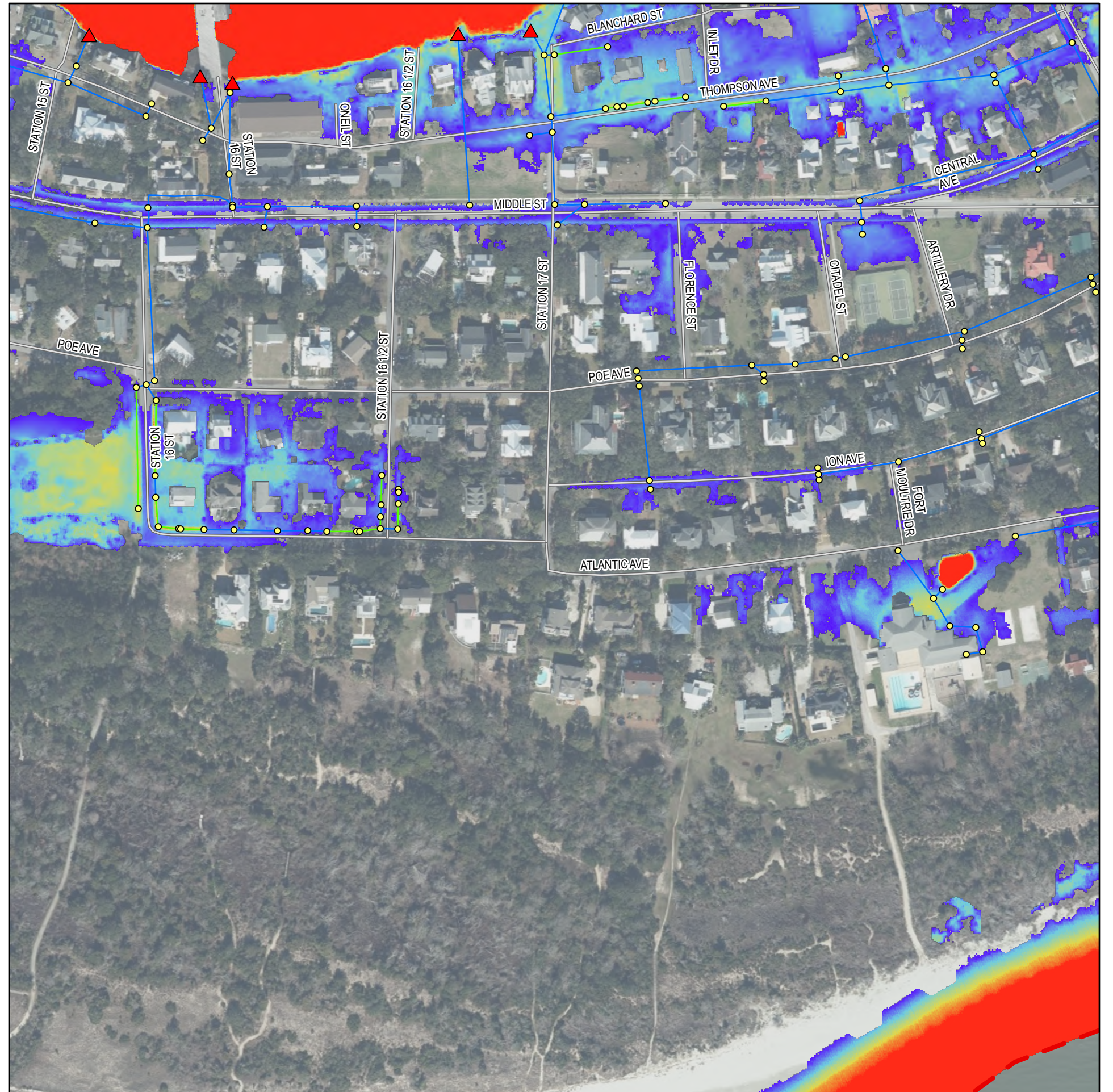
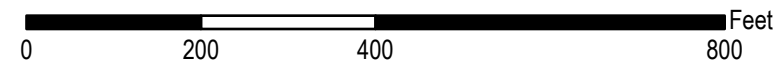
NOTES:

1. Background 2020 aerial imagery collected by Kucera International. Imagery is managed by Adam DeMars, South Carolina State GIS Coordinator and hosted by ESRI.
2. Drainage infrastructure locations are approximate.
3. Flood depths presented herein are representative of the maximum flood depth simulated for this scenario.
4. Flood depths presented herein within the immediate cross sections of open channels or ditches are not representative of actual conditions due to model limitations.
5. Condition of existing infrastructure (i.e., clogged or damaged) was assumed directly from the inventory of the existing drainage infrastructure (**Appendix A**).
6. **Appendices B.9-B.16** assume a future land cover condition (see full report for details).



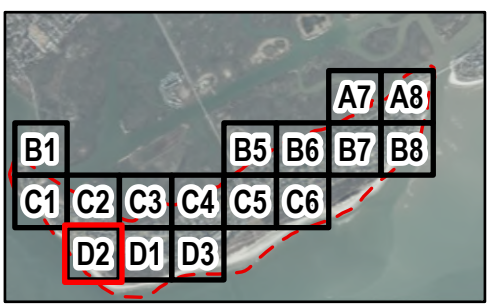
**Legend**

- Study Boundary
  - Outfall
  - Inlet, End of Pipe, Manhole, or Junction
  - Stormwater Pipe
  - Stormwater Ditch
  - Roadway
- Maximum Flood Depth
- > 3.00 ft
  - 0.10 ft



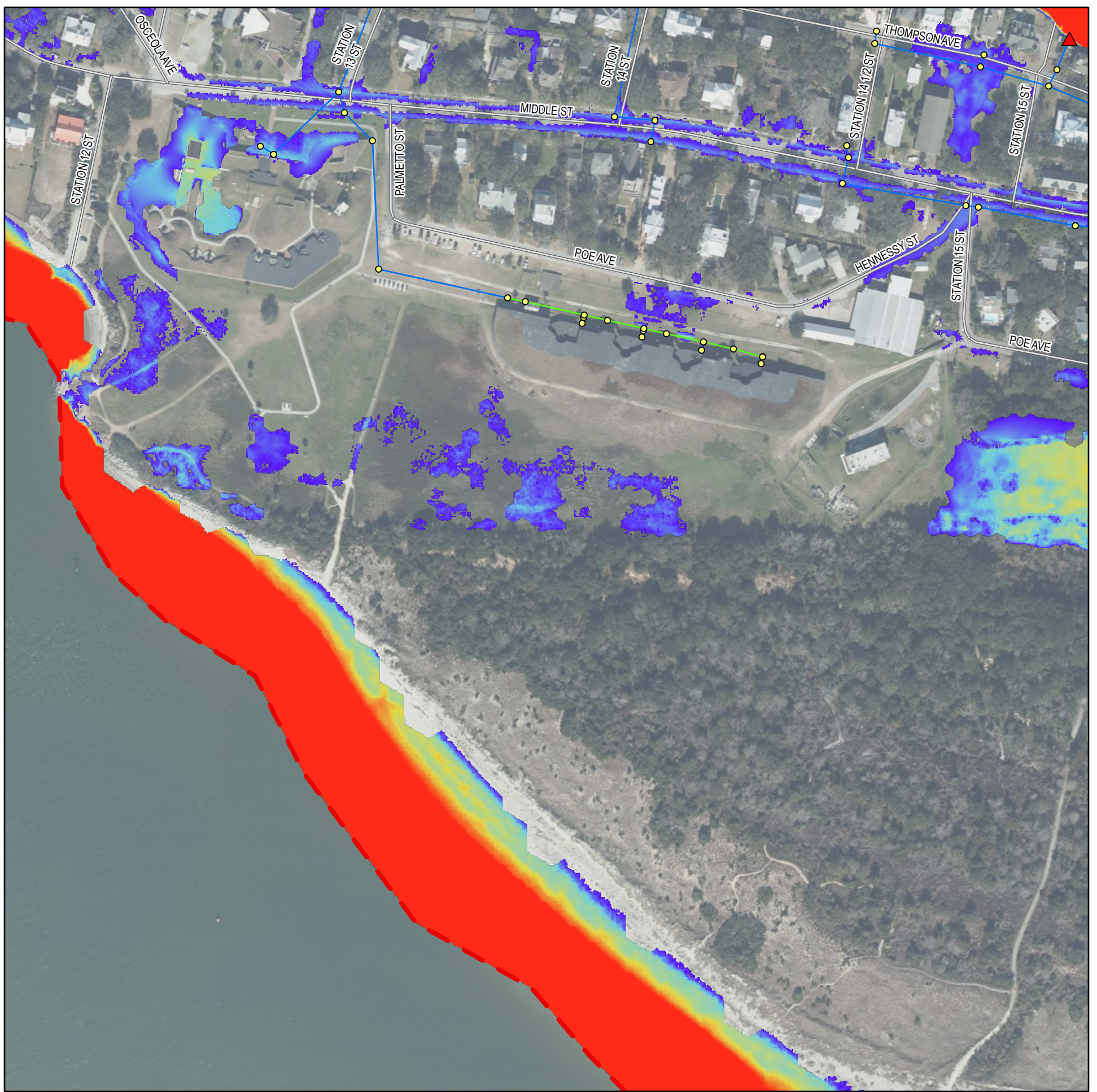
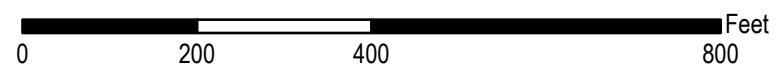
NOTES:

1. Background 2020 aerial imagery collected by Kucera International. Imagery is managed by Adam DeMars, South Carolina State GIS Coordinator and hosted by ESRI.
2. Drainage infrastructure locations are approximate.
3. Flood depths presented herein are representative of the maximum flood depth simulated for this scenario.
4. Flood depths presented herein within the immediate cross sections of open channels or ditches are not representative of actual conditions due to model limitations.
5. Condition of existing infrastructure (i.e., clogged or damaged) was assumed directly from the inventory of the existing drainage infrastructure (**Appendix A**).
6. **Appendices B.9-B.16** assume a future land cover condition (see full report for details).



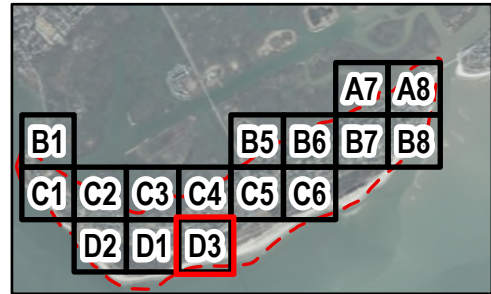
**Legend**

- Study Boundary
  - Outfall
  - Inlet, End of Pipe, Manhole, or Junction
  - Stormwater Pipe
  - Stormwater Ditch
  - Roadway
- Maximum Flood Depth
- > 3.00 ft
  - 0.10 ft



NOTES:

1. Background 2020 aerial imagery collected by Kucera International. Imagery is managed by Adam DeMars, South Carolina State GIS Coordinator and hosted by ESRI.
2. Drainage infrastructure locations are approximate.
3. Flood depths presented herein are representative of the maximum flood depth simulated for this scenario.
4. Flood depths presented herein within the immediate cross sections of open channels or ditches are not representative of actual conditions due to model limitations.
5. Condition of existing infrastructure (i.e., clogged or damaged) was assumed directly from the inventory of the existing drainage infrastructure (**Appendix A**).
6. **Appendices B.9-B.16** assume a future land cover condition (see full report for details).



**Legend**

- Study Boundary
  - Outfall
  - Inlet, End of Pipe, Manhole, or Junction
  - Stormwater Pipe
  - Stormwater Ditch
  - Roadway
- Maximum Flood Depth
- > 3.00 ft
  - 0.10 ft

