

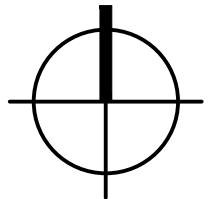
THIS PRINT QUALITY SCALE SHOWS 6 SHADED BOXES. IF 6 BOXES ARE NOT CLEARLY DEFINED, THE ORIGINAL QUALITY AND DESIGN MAY NOT DISPLAY AS INTENDED. ALL SCALES DEPICTED ON THESE SHEETS ARE FOR 24 X 36 PRINTS. THIS PRINT IS THE PROPERTY OF APPLIED BUILDING SCIENCES, INC. AND IS NOT TO BE USED FOR CONSTRUCTION, DESIGN, OR REPRODUCED WITHOUT PRIOR CONSENT. THESE DRAWINGS MUST BE PRINTED IN COLOR.

SULLIVAN’S ISLAND BEACH ACCESS BOARDWALK REPLACEMENT AT

STATION 24

SULLIVAN’S ISLAND, SOUTH CAROLINA

BID SET



1

PROJECT LOCATION MAP

SCALE: NTS

OWNER:

TOWN OF SULLIVAN’S ISLAND
PO BOX 427
SULLIVAN’S ISLAND, SOUTH CAROLINA 29482

OWNER CONTACT:

JOE HENDERSON, TOWN ADMINISTRATOR
PHONE: (843) 883-5731
EMAIL: JHENDERSON@SULLIVANSISLAND.SC.GOV

ENGINEER:

APPLIED BUILDING SCIENCES, INC.
2308 COSGROVE AVENUE
NORTH CHARLESTON, SOUTH CAROLINA 29405
(843) 724-1456

PROJECT ENGINEER:
ROBERT (BOBBY) FUNCIK, PE
BFUNCIK@APPLIEDBUILDINGSCIENCES.COM
(843) 724-1476

PROJECT INFORMATION:

JURISDICTION: TOWN OF SULLIVAN’S ISLAND
LOCATION: STATION 24 BOARDWALK
ORIGINAL CONSTRUCTION: UNKNOWN
ORIGINAL CODE: UNKNOWN
APPLICABLE CODE: 2021 SOUTH CAROLINA BUILDING CODE (2021 SCBC)

PROJECT SUMMARY:

THE PROJECT INVOLVES THE BEACH ACCESS BOARDWALK AT STATION 24. APPROXIMATELY 700’ OF EXISTING BOARDWALK WILL BE REMOVED AND REPLACED. AN ADDITIONAL 60’ OF BOARDWALK WILL BE INSTALLED AT THE NORTH END AND AN ADDITIONAL 200’ WILL BE INSTALLED AT THE SOUTH END, FOR A TOTAL NEW BOARDWALK LENGTH OF 960’. RAMPS PERPENDICULAR TO THE BOARDWALK WILL ALSO BE CONSTRUCTED AT THE FIRST INLAND DUNE AND ONE BENCH/REST AREA WILL BE CONSTRUCTED WITH THE FINAL LOCATION TBD BY THE OWNER.

THE BEACH ACCESS BOARDWALK WILL BE 6’ WIDE AND WILL BE CONSTRUCTED OF DIMENSIONAL LUMBER, TIMBER PILES, AND COMPOSITE DECKING.

REMOVAL AND PROPER DISPOSAL OF THE EXISTING BOARDWALK IS INCLUDED IN THE WORK. THE DRAWINGS SHOWN HEREIN PREPARED BY APPLIED BUILDING SCIENCES, INC. (ABS) ARE THE STRUCTURAL PLANS.

THE BASE BID SHALL CONSIST OF WEARDECK HDPE DECKING AND GUARD/BENCH COMPONENTS. THE BASE BID SHALL INCLUDE EDGE PROTECTION AT RAMPS AND RAMP LANDINGS (5’ BEYOND THE END OF RAMPS) ONLY.

GENERAL NOTES:

- DESIGN ERRORS, INCONSISTENCIES, AND OMISSIONS DISCOVERED BY THE CONTRACTOR SHALL BE REPORTED PROMPTLY TO THE ARCHITECT/ENGINEER.
- THE CONTRACTOR IS NOTIFIED THAT INCIDENTAL WORK NOT SHOWN IN THE DRAWINGS SHALL BE ACCOUNTED FOR IN THE WORK.
- DO NOT SCALE DRAWINGS FOR MEASUREMENTS.
- CONTRACTOR SHALL FIELD VERIFY ALL DIMENSIONS AND EXISTING BOARDWALK GEOMETRY, INCLUDING BOARDWALK LENGTHS.
- DIMENSIONS AND SCALES SHOWN ON THE DRAWINGS ARE FOR GENERAL REFERENCE ONLY.
- CONTACT THE ENGINEER/ARCHITECT FOR QUESTIONS OR CLARIFICATIONS CONCERNING THE DRAWINGS AND OTHER CONTRACT DOCUMENTS.
- ALL WORK TO BE PERFORMED IN ACCORDANCE WITH THE APPLICABLE BUILDING CODES; LOCAL REQUIREMENTS AND ORDINANCES HAVING JURISDICTION OVER THIS PROPERTY; ACCEPTABLE INDUSTRY STANDARDS; AND MANUFACTURERS’ PRODUCT INSTRUCTIONS.
- CONTRACTOR IS RESPONSIBLE FOR MEANS, METHODS, SCHEDULING, SEQUENCING, AND COORDINATION OF THE WORK.
- “PROVIDE” = “FURNISH AND INSTALL”
- EXISTING CONDITIONS/COMPONENTS SHOWN ON THE DRAWINGS ARE NOTED AS SUCH. ALL OTHER CONDITIONS/COMPONENTS SHOWN ON THE DRAWINGS SHALL BE UNDERSTOOD TO BE NEW AND TO BE PROVIDED BY CONTRACTOR, U.N.O.
- THE PURPOSE OF THE DRAWINGS AND SPECIFICATIONS IS TO CONVEY A DESIGN INTENT. DETAILS HAVE BEEN PROVIDED FOR THE MOST COMMON CONDITIONS. THE CONTRACTOR IS NOTIFIED THAT DETAILS FOR EVERY POSSIBLE CONDITION THAT MAY BE ENCOUNTERED ARE NOT PROVIDED. IF THE CONTRACTOR ENCOUNTERS CONDITIONS FOR WHICH THE DESIGN INTENT IS NOT REASONABLY CLEAR, THE CONTRACTOR SHALL ASK THE ARCHITECT/ENGINEER FOR CLARIFICATION IN WRITING.
- ADDITIONAL NOTES ARE PROVIDED IN THE STRUCTURAL SHEETS.

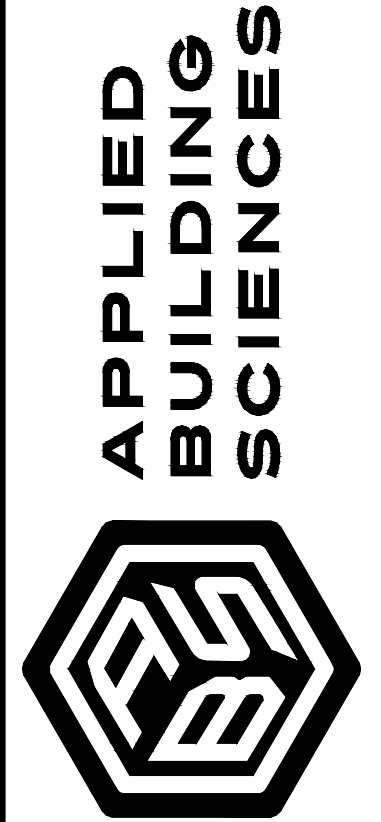
ABBREVIATIONS:

#-PLY	= NUMBER OF PLIES	PCI	= POUNDS PER CUBIC INCH
(#)	= QUANTITY	PG	= PERFORMANCE GRADE
1X	= 1” NOMINAL LUMBER	PLF	= POUNDS PER LINEAR FOOT
2X	= 2” NOMINAL LUMBER	PSF	= POUNDS PER SQUARE FOOT
ABS	= APPLIED BUILDING SCIENCES, INC.	PSI	= POUNDS PER SQUARE INCH
ACI	= AMERICAN CONCRETE INSTITUTE	PSL	= PARALLEL STRAND LUMBER
A-DWGS	= ARCHITECTURAL DRAWINGS	PT	= PRESERVATIVE TREATED
ADA	= AMERICANS WITH DISABILITIES ACT	S-DWGS	= STRUCTURAL ENGINEERING DRAWINGS
AFF	= ABOVE FINISHED FLOOR	SAM	= SELF-ADHESIVE MEMBRANE
AHJ	= AUTHORITY HAVING JURISDICTION	SCDES BCM	= SOUTH CAROLINA DEPARTMENT OF ENVIRONMENTAL SERVICES BUREAU OF COASTAL MANAGEMENT
AISC	= AMERICAN INSTITUTE OF STEEL CONSTRUCTION		
AISI	= AMERICAN IRON AND STEEL INSTITUTE	SIM	= SIMILAR
ANSI	= AMERICAN NATIONAL STANDARDS INSTITUTE	SF	= SQUARE FOOT/FEET
APA	= AMERICAN PLYWOOD ASSOCIATION	SGD	= SLIDING GLASS DOOR
ASCE	= AMERICAN SOCIETY OF CIVIL ENGINEERS	SI	= SQUARE INCHES
ASD	= ALLOWABLE STRESS DESIGN	SMAW	= SHIELDED METAL ARC WELDING
ASTM	= AMERICAN SOCIETY FOR TESTING AND MATERIALS	SS	= STAINLESS STEEL
ATC	= APPLIED TECHNOLOGY COUNCIL	SSMA	= STEEL STUD MANUFACTURERS ASSOCIATION
AWPA	= AMERICAN WOOD-PRESERVER’S ASSOCIATION	SYP	= SOUTHERN YELLOW PINE
AWS	= AMERICAN WELDING SOCIETY	T&G	= TONGUE AND GROOVE
CFR	= CODE OF FEDERAL REGULATIONS	TBD	= TO BE DETERMINED
CFS	= COLD-FORMED STEEL	TPO	= THERMOPLASTIC POLYOLEFIN
CIP	= CAST-IN-PLACE	TYP	= TYPICAL
CMU	= CONCRETE MASONRY UNIT	UNO	= UNLESS NOTED OTHERWISE
CONT.	= CONTINUOUS	VIF	= VERIFY IN FIELD
CPSC	= CONSUMER PRODUCT SAFETY COMMISSION	WFT	= WET FILM THICKNESS
DBO	= DESIGNED BY OTHERS	WOOD	= WINDOW OPENING CONTROL DEVICE
DFT	= DRY FILM THICKNESS	WRB	= WEATHER RESISTIVE BARRIER
DIA	= DIAMETER	ZMAX	= SIMPSON COATING
DP	= DESIGN PRESSURE	ZRC	= ZINC RICH COATING
(E)	= EXISTING		
EA	= EACH		
EJ	= EXPANSION JOINT		
EOR	= ENGINEER OF RECORD		
EPA	= ENVIRONMENTAL PROTECTION AGENCY		
EQ	= EQUAL		
ESJ	= ENGINEERED SEALANT JOINT		
ESR	= EVALUATION SERVICE REPORT		
FA	= FLUID-APPLIED		
FA-RMS	= FLUID-APPLIED ROOF MEMBRANE SYSTEM		
FA-WRAB	= FLUID-APPLIED WEATHER RESISTIVE AIR BARRIER		
FLR	= FLOOR		
FRP	= FIBER REINFORCED POLYMER		
FT	= FOOT OR FEET		
GA	= GAUGE		
GWB	= GYPSUM WALL BOARD		
HDG	= HOT-DIPPED GALVANIZED		
HRS	= HOURS		
HSS	= HOLLOW STRUCTURAL STEEL		
IAW	= IN ACCORDANCE WITH		
IBC	= INTERNATIONAL BUILDING CODE		
IEBC	= INTERNATIONAL EXISTING BUILDING CODE		
IFC	= INTERNATIONAL FIRE CODE		
IN	= INCH OR INCHES		
KSI	= KIPS PER SQUARE INCH		
LB OR LBS	= POUND OR POUNDS		
L.B.	= LOAD BEARING		
LF	= LINEAR FEET		
MAX	= MAXIMUM		
MIN	= MINIMUM		
MPH	= MILES PER HOUR		
(N)	= NEW		
N/A	= NOT APPLICABLE		
NIS	= NOT IN SCOPE		
NFPA	= NATIONAL FIRE PROTECTION ASSOCIATION		
N.L.B.	= NOT LOAD BEARING		
NO.	= NUMBER		
NTS	= NOT TO SCALE		
OC	= ON CENTER		
OSB	= ORIENTED STRAND BOARD		
OZ	= OUNCES		
PCA	= PORTLAND CEMENT ASSOCIATION		

SHEET INDEX

		12/05/2025 BID SET									
GENERAL											
G001	COVER SHEET	■									
G002	SCOPE & PHOTOS	■									
STRUCTURAL											
S001	NOTES & SPECIFICATIONS	■									
S002	TABLES	■									
S101	PLANS	■									
S102	PLANS	■									
S103	PLANS	■									
S201	ELEVATIONS	■									
S401	DETAILS	■									
S402	DETAILS	■									

BID SET
NOT FOR
CONSTRUCTION



2308 COSGROVE AVENUE
NORTH CHARLESTON, SC 29405
OFFICE (843) 724-1456

SULLIVAN’S ISLAND BEACH ACCESS
BOARDWALK REPLACEMENT AT
STATION 24
SULLIVAN’S ISLAND, SOUTH CAROLINA

BID SET DATE: 12/05/2025

DESIGN BY: ALM
DRAWING BY: MAE
CHECKED BY: RMF
PROJECT NO.: 800.25043

COVER SHEET

SHEET
G001

THIS PRINT QUALITY SCALE SHOWS 6 SHADED BOXES. IF 6 BOXES ARE NOT CLEARLY DEFINED, THE ORIGINAL QUALITY AND DESIGN MAY NOT DISPLAY AS INTENDED. ALL SCALES DEPICTED ON THESE SHEETS ARE FOR 24 X 36 PRINTS. THIS PRINT IS THE PROPERTY OF APPLIED BUILDING SCIENCES, INC. AND IS NOT TO BE USED FOR CONSTRUCTION, DESIGN, OR REPRODUCED WITHOUT PRIOR CONSENT. THESE DRAWINGS MUST BE PRINTED IN COLOR.



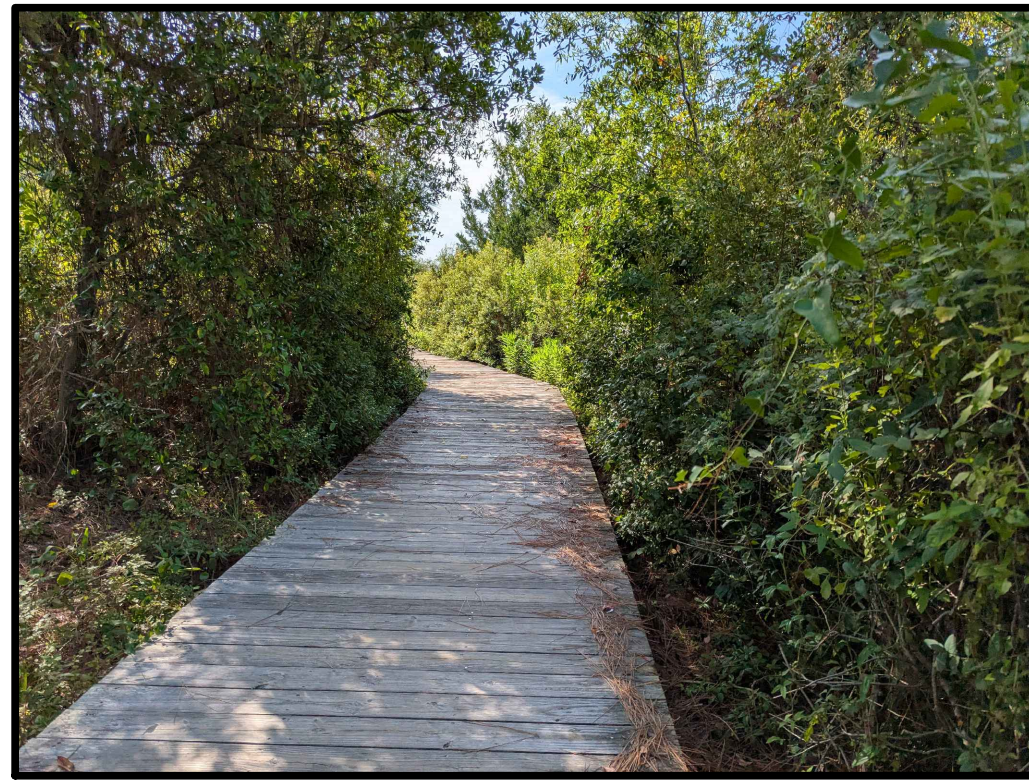
1 STATION 24 SITE PLAN & SCOPE
SCALE: NTS

- NOTES:**
1. THE NEW BEACH ACCESS BOARDWALK, INCLUDING RAMPS, SHALL BE ADA COMPLIANT PER SCBC 2021 AND 2017 ANSI A117.1.
 2. ESTIMATE CONSTRUCTION OF ONE (1) BENCH. FINAL LOCATION TO BE DETERMINED BY OWNER. CONTRACTOR IS RESPONSIBLE FOR OBTAINING PERMIT FOR BENCH FROM THE SOUTH CAROLINA DEPARTMENT OF ENVIRONMENTAL SERVICES (SCDES) BUREAU OF COASTAL MANAGEMENT (BCM).
 3. THE SITE PLAN DOES NOT CONSTITUTE A SURVEY AND IS ONLY PROVIDED TO CONCEPTUALLY SHOW THE LOCATIONS OF BOARDWALKS AND BENCHES. THE TOWN OF SULLIVAN'S ISLAND IS RESPONSIBLE FOR THE FINAL LOCATIONS OF BOARDWALKS AND BENCHES AND FOR VERIFYING ALL SCDES BCM PERMITTING IF APPLICABLE.

- SCOPE KEY**
- REMOVE AND REPLACE BOARDWALK
 - NEW BOARDWALK
 - RAMPS AT FIRST DUNE, BOTH SIDES OF BOARDWALK (SEE 1/S103)
 - PROPOSED SEATING/REST AREA (FINAL LOCATION TBD BY OWNER)



2 PHOTO OF EXISTING CONDITIONS
SCALE: NTS



3 PHOTO OF EXISTING CONDITIONS
SCALE: NTS



4 PHOTO OF EXISTING CONDITIONS
SCALE: NTS



5 PHOTO OF EXISTING CONDITIONS
SCALE: NTS



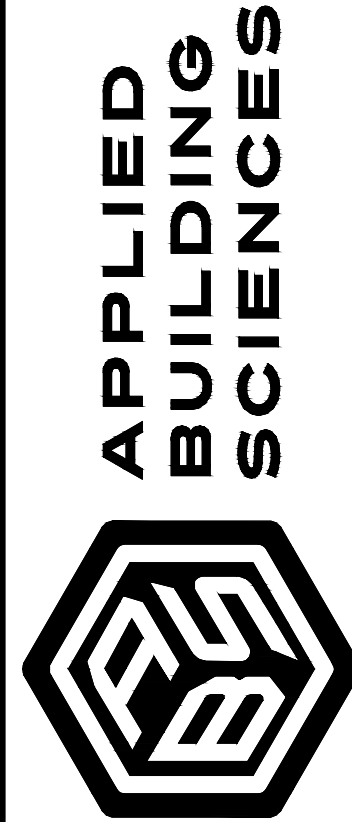
6 PHOTO OF EXISTING CONDITIONS
SCALE: NTS



7 PHOTO OF EXISTING CONDITIONS
SCALE: NTS



8 PHOTO OF EXISTING CONDITIONS
SCALE: NTS



2308 COSGROVE AVENUE
NORTH CHARLESTON, SC 29405
OFFICE (843) 724-1456

SULLIVAN'S ISLAND BEACH ACCESS
BOARDWALK REPLACEMENT AT
STATION 24
SULLIVAN'S ISLAND, SOUTH CAROLINA

BID SET DATE: 12/05/2025

DESIGN BY: ALM
DRAWING BY: MAE
CHECKED BY: RMF
PROJECT NO.: 800.25043

SCOPE & PHOTOS

SHEET

G002

BID SET
NOT FOR
CONSTRUCTION

THIS PRINT QUALITY SCALE SHOWS 6 SHADED BOXES. IF 6 BOXES ARE NOT CLEARLY DEFINED, THE ORIGINAL QUALITY AND DESIGN MAY NOT DISPLAY AS INTENDED. ALL SCALES DEPICTED ON THESE SHEETS ARE FOR 24 X 36 PRINTS. THIS PRINT IS THE PROPERTY OF APPLIED BUILDING SCIENCES, INC. AND IS NOT TO BE USED FOR CONSTRUCTION, DESIGN, OR REPRODUCED WITHOUT PRIOR CONSENT. THESE DRAWINGS MUST BE PRINTED IN COLOR.

NOTES AND SPECIFICATIONS

A. GENERAL

- CONSTRUCTION SHALL CONFORM TO THE APPLICABLE BUILDING CODE, INDUSTRY STANDARDS, MANUFACTURER INSTRUCTIONS, AND REGULATIONS OF AGENCIES HAVING JURISDICTION.
- CONTRACTOR TO VERIFY CONDITIONS AND DIMENSIONS AND NOTIFY THE ENGINEER IN WRITING OF ANY EXISTING CONDITIONS WHICH DO NOT COMPLY WITH THESE PLANS.
- THE CONTRACTOR SHALL VISIT THE SITE AND BECOME FAMILIAR WITH THE EXISTING CONDITIONS PRIOR TO BIDDING AND PRIOR TO CONSTRUCTION. THE CONTRACTOR SHALL NOT BID ANY PART OF THE PROJECT BASED ON AN ASSUMPTION OR SPECULATION OF THE DESIGN INTENT.
- CONTRACTOR IS RESPONSIBLE FOR VERIFYING LENGTHS OF NEW BOARDWALKS AND BOARDWALKS TO BE REMOVED AND REPLACED.
- CONTRACTOR IS RESPONSIBLE FOR ADEQUACY OF BRACING, SHORING, TEMPORARY SUPPORTS, ETC., DURING CONSTRUCTION.
- USACOE AND SCDES BCM PERMITS, IF APPLICABLE, SHALL BE OBTAINED BY THE CONTRACTOR. IT IS THE CONTRACTOR'S RESPONSIBILITY TO OBTAIN ALL OTHER APPLICABLE PERMITS REQUIRED FOR DEMOLITION AND CONSTRUCTION.
- CONTRACTOR SHALL VERIFY THE TYPES, LOCATIONS, SIZES, AND ELEVATIONS OF ALL UTILITIES AND UNDERGROUND STRUCTURES PRIOR TO BEGINNING WORK. CONTRACTOR SHALL TAKE SPECIAL PRECAUTIONS TO AVOID ANY CONTACT WITH ABOVE- AND BELOW-GROUND UTILITIES.
- ALL GRASSED AND LANDSCAPED AREAS DISTURBED DURING CONSTRUCTION SHALL BE RESTORED TO MATCH EXISTING.
- IT IS THE CONTRACTOR'S RESPONSIBILITY TO PROVIDE ADEQUATE WRITTEN SUBMITTALS FOR APPROVAL TO PROVE EQUIVALENCY FOR PROPOSED SUBSTITUTIONS TO SPECIFIED MATERIALS.
- CONTRACTOR SHALL PROPERLY DISPOSE OF ALL DEMOLISHED MATERIALS IN ACCORDANCE WITH APPLICABLE LAWS AND REGULATIONS.
- AT DUNES, WALKWAY SHALL HAVE 2' VERTICAL CLEARANCE BETWEEN THE SURFACE OF THE DUNE AND THE TOP OF THE WALKWAY.

B. DESIGN CRITERIA

APPLICABLE BUILDING CODE:
2021 SOUTH CAROLINA BUILDING CODE (SCBC)

REFERENCED STANDARDS AND SPECIFICATIONS:

AMERICAN WOOD PROTECTION ASSOCIATION (AWPA) STANDARD U1 "USE CATEGORIES SYSTEM" (AWPA U1);

AWPA STANDARD M4 "STANDARD FOR THE CARE OF PRESERVATIVE-TREATED WOOD PRODUCTS" (AWPA M4); AND

SOUTHERN FOREST PRODUCTS ASSOCIATION "MARINE CONSTRUCTION GUIDE, 2014";

STRUCTURE RISK CATEGORY: CATEGORY I (ASCE 7-16)

GRAVITY LOADS:

FLOOR LIVE = 100 PSF

FLOOR DEAD = 15 PSF

GROUND SNOW (P_g) = 10 PSF

WIND LOADS (ASCE 7-16):

RISK CATEGORY I, V = 133 MPH, EXPOSURE D, OTHER STRUCTURE, OPEN

q_z = 40 psf (ULTIMATE), q_z = 24 psf (ASD)

HANDRAILS AND GUARDRAILS SHALL BE CAPABLE OF WITHSTANDING A LINEAR LOAD OF 50 POUNDS PER LINEAR FOOT (PLF) OR A CONCENTRATED LOAD OF 200 POUNDS IN ANY DIRECTION, WHICHEVER IS GREATER.

C. WOOD/TIMBER FRAMING

- UNLESS NOTED OTHERWISE, ALL WOOD FRAMING SHALL BE INSTALLED IN ACCORDANCE WITH THE SCBC. ALL FRAMING CONNECTIONS SHALL MEET THE FASTENING REQUIREMENTS AS SHOWN IN THESE DRAWINGS.
- ALL DIMENSIONAL LUMBER SHALL BE PRESERVATIVE TREATED (PT) SOUTHERN PINE, SPIB GRADE NO.2 OR BETTER UNLESS OTHERWISE NOTED IN THE DRAWINGS. 6" DIAMETER PILES SHALL BE SPIB GRADE NO. 2 OR BETTER.
- PRESERVATIVE TREATMENT (PT) FOR ALL DIMENSIONAL LUMBER SHALL MEET AWPA U1 USE CATEGORY UC5C (MARINE USE SOUTHERN WATERS) OR BETTER, UNLESS OTHERWISE INDICATED IN THE DRAWINGS.
- TREATMENT SHALL BE CHROMATED COPPER ARSENATE (CCA) FOR PILES, SPLIT PILE CAPS, AND STRINGERS.
- ALL NEW LUMBER SHALL BE AIR OR KILN-DRIED AND HAVE A MAXIMUM MOISTURE CONTENT OF 19% PRIOR TO INSTALLATION, UNLESS OTHERWISE NOTED.
- ALL ENDS (FACTORY AND FIELD CUT) AND HOLES OF TREATED LUMBER, HOLES, AND INJURIES OF TIMBERS SHALL BE FIELD TREATED WITH A LIBERAL APPLICATION OF COPPER NAPHTHENATE WITH 2% METAL SOLUTION UNTIL VISIBLE EVIDENCE OF FURTHER PENETRATION INTO THE WOOD HAS CEASED, IN ACCORDANCE WITH AWPA M4.

D. FASTENERS AND HARDWARE

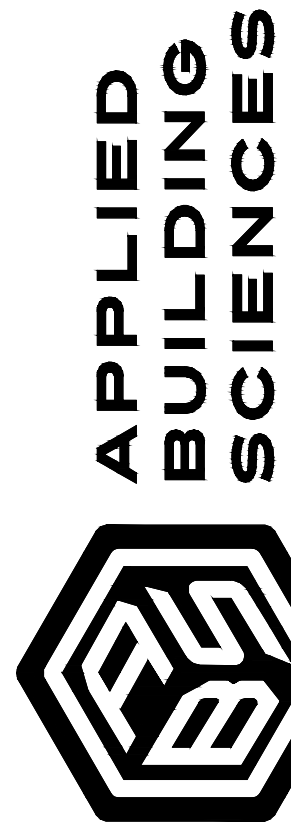
- INSTALL METAL HARDWARE AND CONNECTORS IN STRICT ACCORDANCE WITH THE MANUFACTURERS' INSTRUCTIONS.
- SEE TABLE 2 FOR BOLTS.
- SEE TABLE 3 FOR CONNECTOR SCHEDULE.

- CUT BOLT ENDS AND DAMAGED GALVANIZED COATINGS ON STEEL HARDWARE SHALL BE PREPPED AND FIELD COATED WITH SHERWIN WILLIAMS FAST CLAD ZINC HS OR APPROVED EQUIVALENT WITH A MINIMUM PAINT THICKNESS OF 2.0 DRY MILS. SUBSTRATE SURFACES SHALL BE PREPPED IN ACCORDANCE ASTM A780A-09 STANDARD PRACTICE FOR REPAIR OF DAMAGED AND UNCOATED AREAS OF HOT-DIP GALVANIZED COATINGS (ASTM A780).

E. GUARDS AND HANDRAILS

- GUARDS ARE REQUIRED IN SECTIONS WHERE THE BOARDWALK ELEVATION IS GREATER THAN 30-INCHES ABOVE GRADE WITHIN 36-INCHES HORIZONTALLY MEASURED FROM EITHER EDGE OF THE BOARDWALK. THE CONTRACTOR IS RESPONSIBLE FOR IDENTIFYING SECTIONS WHERE THE FINISHED BOARDWALK ELEVATION IS GREATER THAN 30-INCHES ABOVE GRADE.
- ALL RAMPS SHALL HAVE GRASPABLE HANDRAILS AND EDGE PROTECTION ON BOTH SIDES IN ACCORDANCE WITH THE SCBC.
- RAMPS SHALL HAVE A MAXIMUM SLOPE OF 1:12 (8.3%) AND A MAXIMUM RISE OF 30" WITHOUT A LANDING.
- RAMPS SHALL HAVE LANDINGS AT THE BOTTOM AND TOP OF EACH RAMP RUN. LANDINGS SHALL HAVE A MINIMUM LENGTH OF 60".

BID SET
NOT FOR
CONSTRUCTION



2308 COSGROVE AVENUE
NORTH CHARLESTON, SC 29405
OFFICE: (843) 724-1456

SULLIVAN'S ISLAND BEACH ACCESS
BOARDWALK REPLACEMENT AT
STATION 24

SULLIVAN'S ISLAND, SOUTH CAROLINA

BID SET DATE: 12/05/2025

DESIGN BY: ALM
DRAWING BY: MAE
CHECKED BY: RMF
PROJECT NO.: 800.25043

NOTES &
SPECIFICATIONS

SHEET

S001

THIS PRINT IS THE PROPERTY OF APPLIED BUILDING SCIENCES, INC. AND IS NOT TO BE USED FOR CONSTRUCTION, DESIGN, OR REPRODUCED WITHOUT PRIOR CONSENT. THESE DRAWINGS MUST BE PRINTED IN COLOR. ALL SCALES DEPICTED ON THESE SHEETS ARE FOR 24 X 36 PRINTS.

THIS PRINT QUALITY SCALE SHOWS 6 SHADED BOXES. IF 6 BOXES ARE NOT CLEARLY DEFINED, THE ORIGINAL QUALITY AND DESIGN MAY NOT DISPLAY AS INTENDED.

TABLE 1 – DECKING		
MATERIAL	FASTENING METHOD	NOTES
5/4 X 6" WEARDECK RPL HDPE DECKING	SIMPSON TYPE 316 #10 X 2-3/4" LONG DECK-DRIVE DCU COMPOSITE SCREW. TWO (2) FACE SCREWS EACH JOIST. SCREWS MAY BE HAVE COLOR MATCHED HEADS OR STAINLESS HEADS PER OWNER'S REQUEST.	COLOR TO BE SELECTED BY OWNER. CONTRACTOR TO PROVIDE OWNER WITH COLOR SAMPLES PRIOR TO SELECTION. INSTALL DECKING IN ACCORDANCE WITH MANUFACTURER'S INSTALLATION INSTRUCTIONS.

TABLE 2 – BOLTS		
MATERIAL	CORROSION PROTECTION	NOTES
ASTM A307 (60,000 PSI TENSILE STRENGTH)	HOT-DIPPED GALVANIZED IN ACCORDANCE WITH ASTM A153.	OGEE WASHERS, NUTS, ETC. TO MATCH

TABLE 3 – CONNECTORS/FASTENERS		
CONNECTOR	LABEL	FASTENERS
1	SIMPSON H2.5ASS	SIMPSON 0.131" Ø X 1.5" LONG SSN48 NAILS
2		NOT USED
3	3/4" THRU-BOLT ¹	3/4" THROUGH-BOLT WITH OGEE WASHER, LOCK WASHER, AND NUT
4	TYPE 316 SS 1/2" THREADED ROD	STANDARD NUT AND OGEE WASHER TYPE 316 SS
5	DECK SCREW	SIMPSON TYPE 316 SS #10 X 3" LONG DECK-DRIVE DWP WOOD SCREW (TRIM HEAD)
6	SIMPSON DTT2SS	SIMPSON 1/4" X 1-1/2" SDS TYPE 316 SS
7		NOT USED
8		NOT USED
9	TOENAIL AT BLOCKING	(8) SIMPSON SSA10D SCNR RING-SHANK CONNECTOR NAILS
10	SDWS27300SS	0.276 X 3 SIMPSON SDWS TIMBER SS SCREWS AT 6" O.C.
11	1/2" THRU-BOLT ¹	1/2" THROUGH-BOLT WITH DOCK WASHER, LOCK WASHER, AND NUT
12	SIMPSON LUC26SS	(6) #9 X 1-1/2" TYPE 316 SS SIMPSON SD CONNECTOR SCREWS (SD9112SS) INTO BEAM AND (4) #9 X 1-1/2" TYPE 316 SS SIMPSON SD CONNECTOR SCREWS (SD9112SS) INTO JOIST

NOTES:

1. SEE TABLE 2 FOR BOLT CORROSION PROTECTION.

BID SET
NOT FOR
CONSTRUCTION



APPLIED
BUILDING
SCIENCES

2308 COSGROVE AVENUE
NORTH CHARLESTON, SC 29405
OFFICE (843) 724-1456

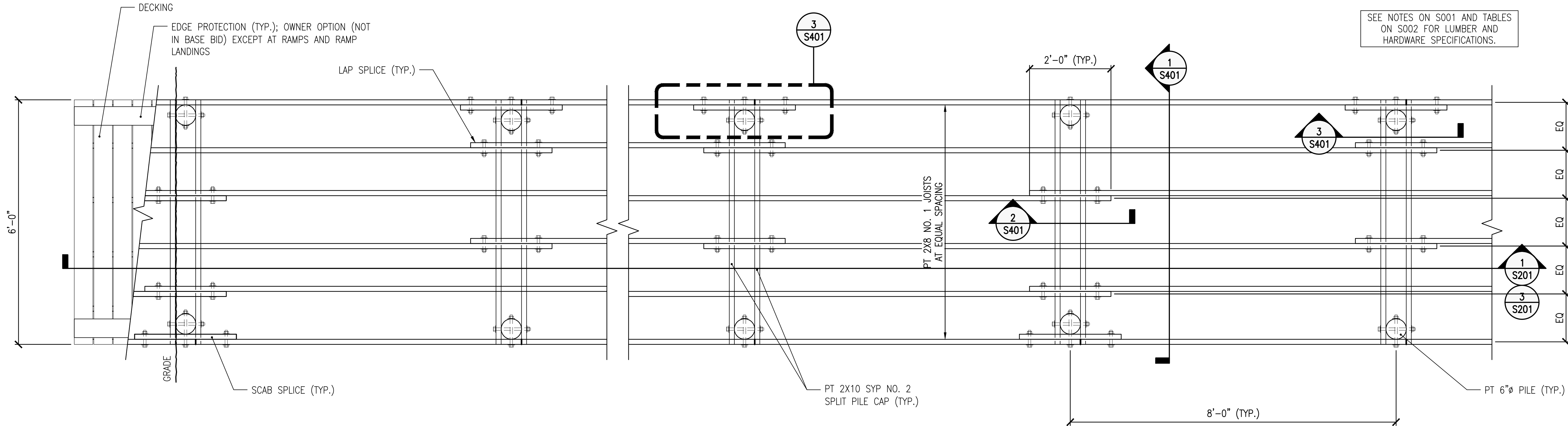
SULLIVAN’S ISLAND BEACH ACCESS
BOARDWALK REPLACEMENT AT
STATION 24
SULLIVAN’S ISLAND, SOUTH CAROLINA

BID SET DATE:	12/05/2025
DESIGN BY:	ALM
DRAWING BY:	MAE
CHECKED BY:	RMF
PROJECT NO.:	800.25043

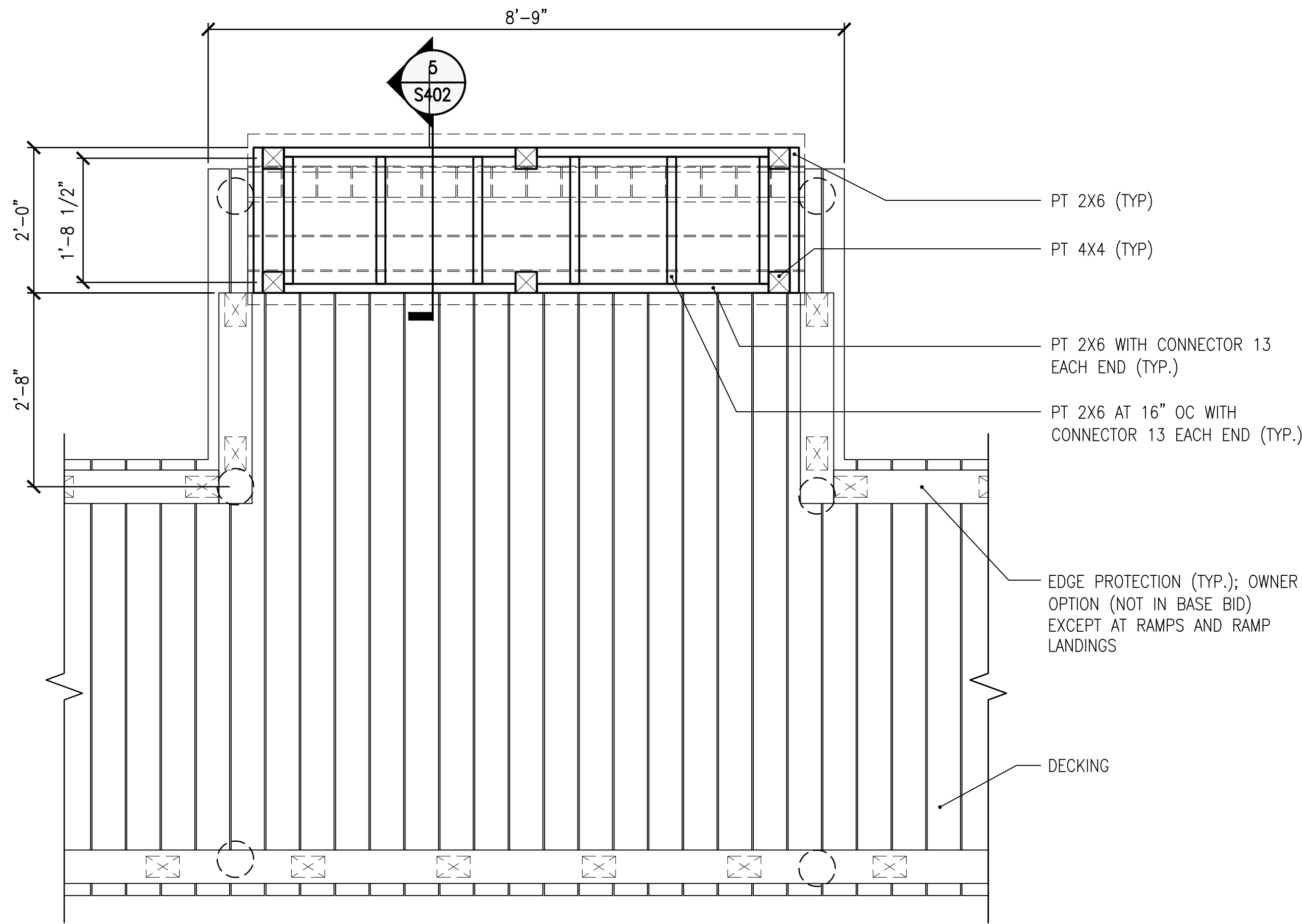
TABLES
SHEET
S002

THIS PRINT IS THE PROPERTY OF APPLIED BUILDING SCIENCES, INC. AND IS NOT TO BE USED FOR CONSTRUCTION, DESIGN, OR REPRODUCED WITHOUT PRIOR CONSENT. THESE DRAWINGS MUST BE PRINTED IN COLOR. ALL SCALES DEPICTED ON THESE SHEETS ARE FOR 24 X 36 PRINTS.

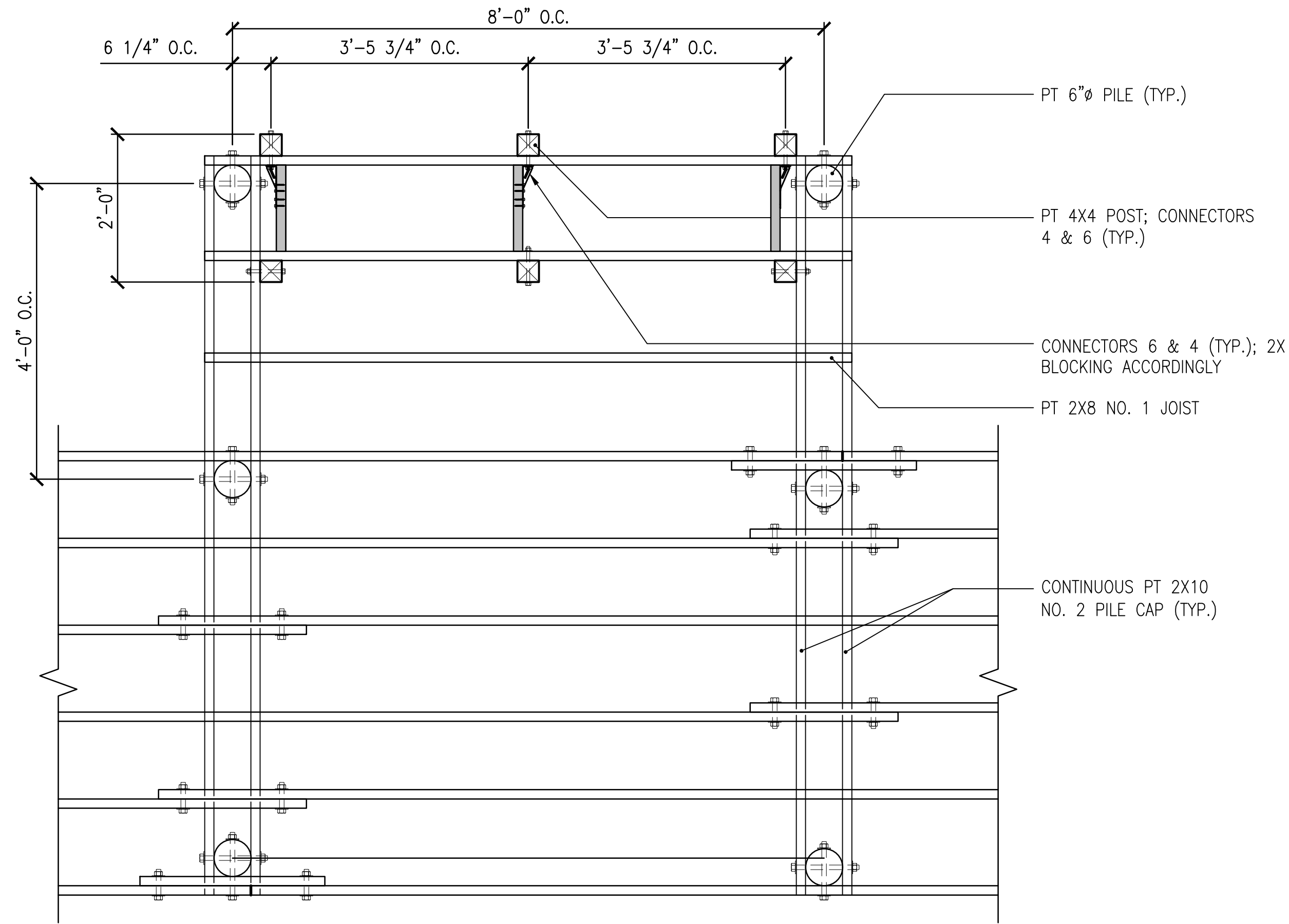
THIS PRINT QUALITY SCALE SHOWS 6 SHADED BOXES. IF 6 BOXES ARE NOT CLEARLY DEFINED, THE ORIGINAL QUALITY AND DESIGN MAY NOT DISPLAY AS INTENDED.



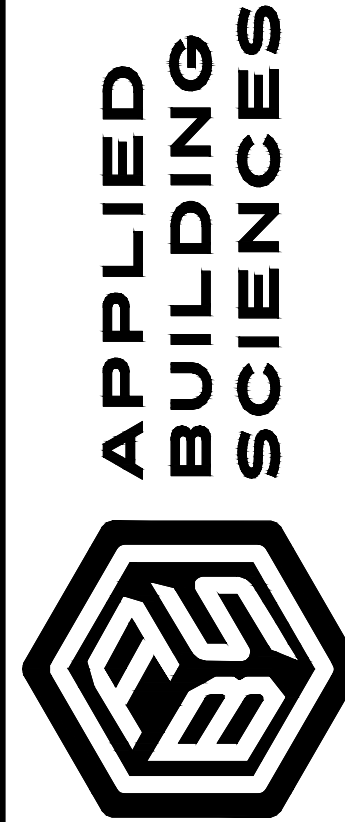
1 TYPICAL BOARDWALK FRAMING PLAN
SCALE: 3/4" = 1'-0"



2 TYPICAL BENCH AREA PLAN
SCALE: 3/4" = 1'-0"



3 TYPICAL BENCH AREA PLAN FRAMING
SCALE: 3/4" = 1'-0"



2308 COSGROVE AVENUE
NORTH CHARLESTON, SC 29405
OFFICE (843) 724-1456

SULLIVAN'S ISLAND BEACH ACCESS
BOARDWALK REPLACEMENT AT
STATION 24
SULLIVAN'S ISLAND, SOUTH CAROLINA

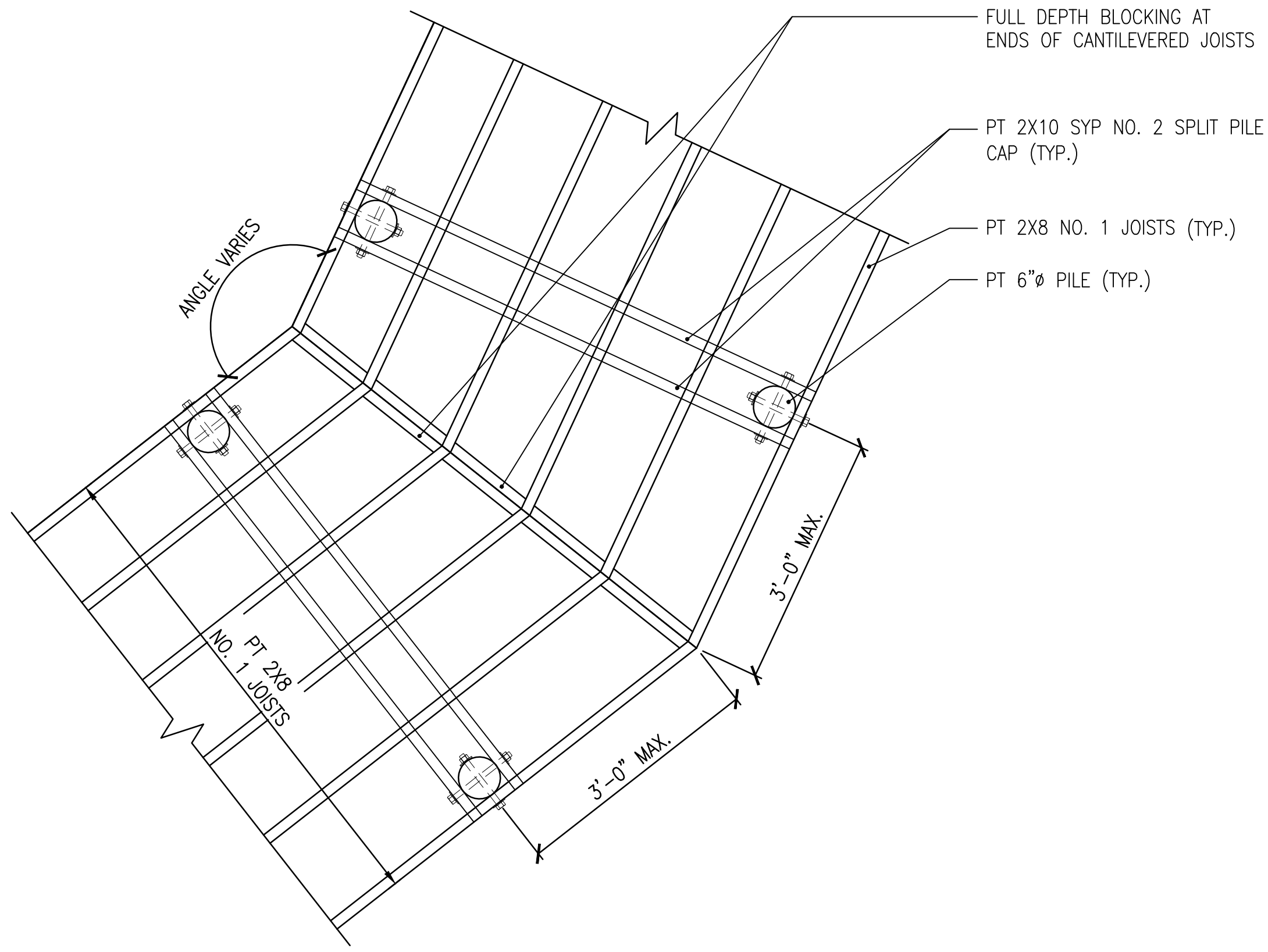
BID SET DATE: 12/05/2025

DESIGN BY: ALM
DRAWING BY: MAE
CHECKED BY: RMF
PROJECT NO.: 800.25043

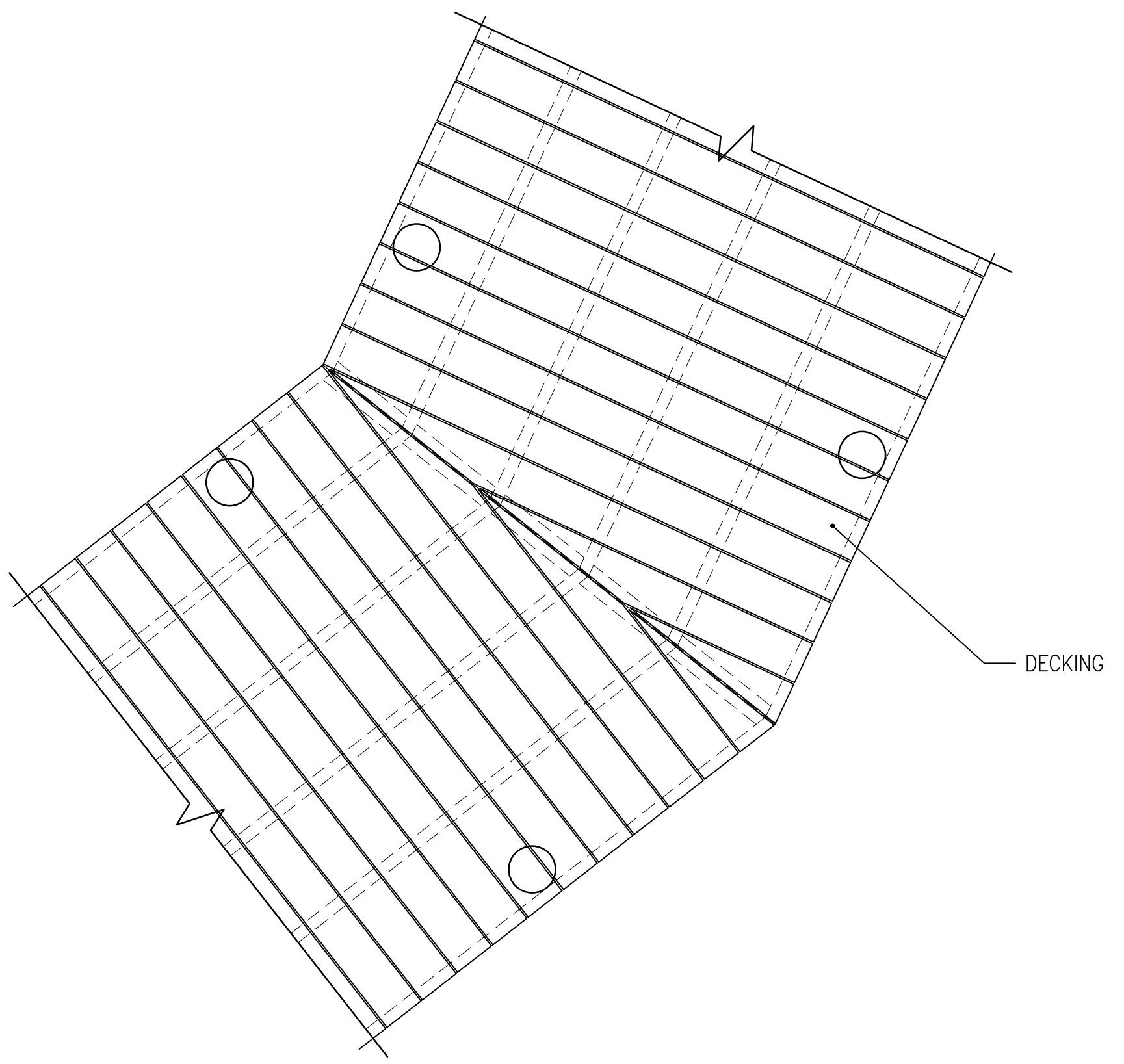
PLANS
SHEET
S101

BID SET
NOT FOR
CONSTRUCTION

THIS PRINT QUALITY SCALE SHOWS 6 SHADED BOXES. IF 6 BOXES ARE NOT CLEARLY DEFINED, THE ORIGINAL QUALITY AND DESIGN MAY NOT DISPLAY AS INTENDED.
THIS PRINT IS THE PROPERTY OF APPLIED BUILDING SCIENCES, INC. AND IS NOT TO BE USED FOR CONSTRUCTION, DESIGN, OR REPRODUCED WITHOUT PRIOR CONSENT. THESE DRAWINGS MUST BE PRINTED IN COLOR. ALL SCALES DEPICTED ON THESE SHEETS ARE FOR 24 X 36 PRINTS.



1 PROPOSED ALIGNMENT FRAMING PLAN
SCALE: 3/4" = 1'-0"



2 PROPOSED ALIGNMENT PLAN
SCALE: 3/4" = 1'-0"

SULLIVAN'S ISLAND BEACH ACCESS
BOARDWALK REPLACEMENT AT
STATION 24
SULLIVAN'S ISLAND, SOUTH CAROLINA



APPLIED
BUILDING
SCIENCES

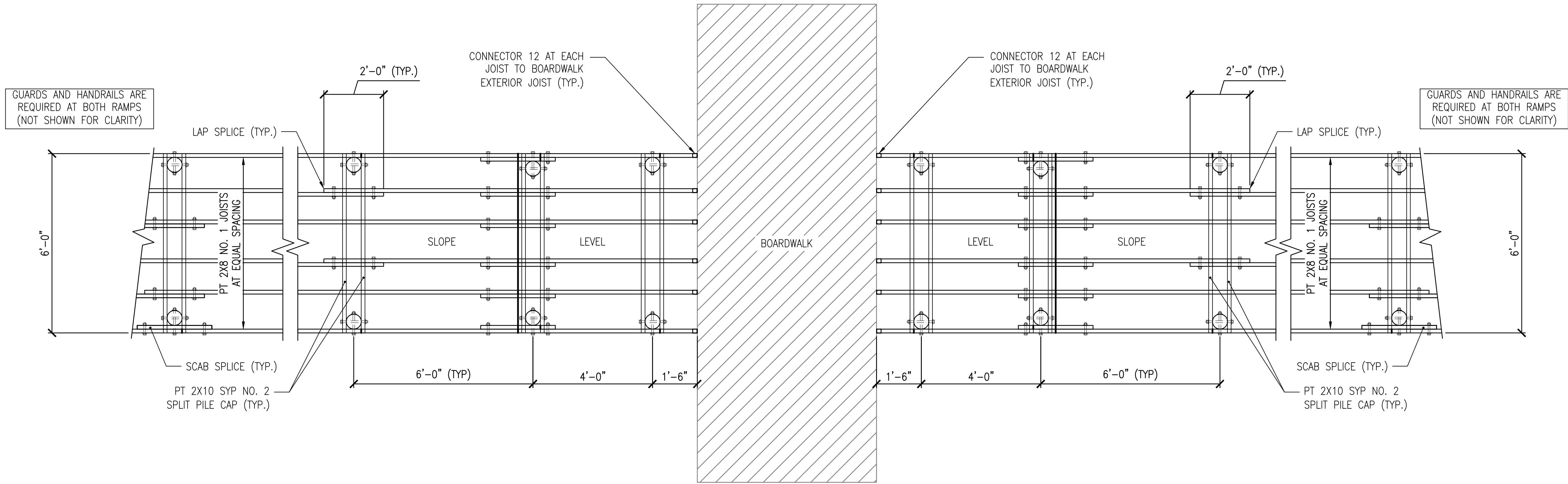
2308 COSGROVE AVENUE
NORTH CHARLESTON, SC 29405
OFFICE (843) 724-1456

BID SET
NOT FOR
CONSTRUCTION

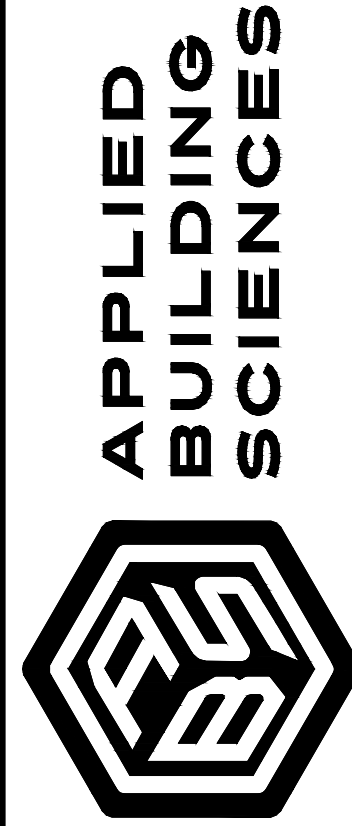
BID SET DATE:	12/05/2025
DESIGN BY:	ALM
DRAWING BY:	MAE
CHECKED BY:	RMF
PROJECT NO.:	800.25043

PLANS
SHEET
S102

THIS PRINT QUALITY SCALE SHOWS 6 SHADED BOXES. IF 6 BOXES ARE NOT CLEARLY DEFINED, THE ORIGINAL QUALITY AND DESIGN MAY NOT DISPLAY AS INTENDED.
THIS PRINT IS THE PROPERTY OF APPLIED BUILDING SCIENCES, INC. AND IS NOT TO BE USED FOR CONSTRUCTION, DESIGN, OR REPRODUCED WITHOUT PRIOR CONSENT. THESE DRAWINGS MUST BE PRINTED IN COLOR. ALL SCALES DEPICTED ON THESE SHEETS ARE FOR 24 X 36 PRINTS.



1 RAMP AT BOARDWALK PLAN
SCALE: 1/2" = 1'-0"



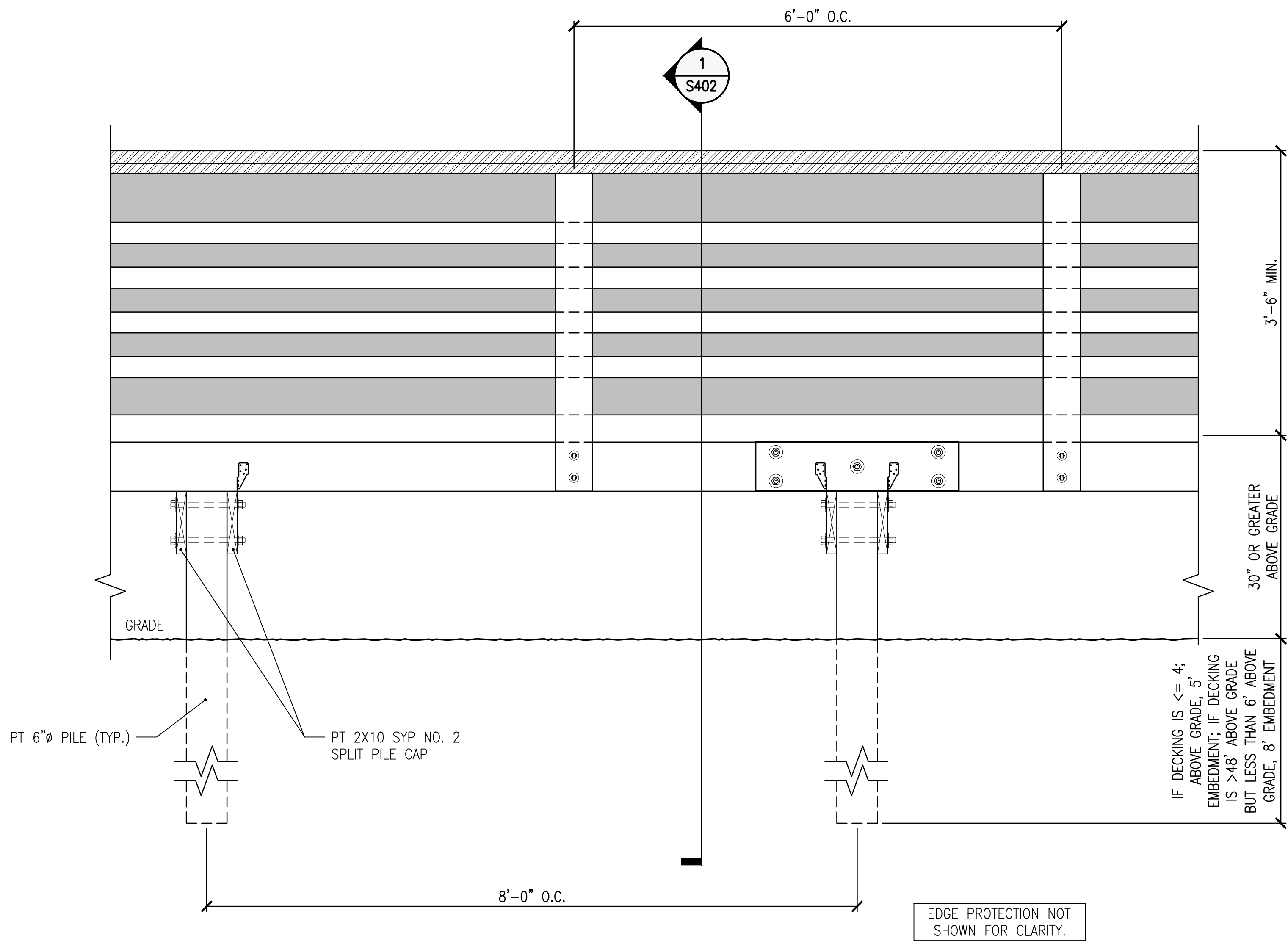
2308 COSGROVE AVENUE
NORTH CHARLESTON, SC 29405
OFFICE (843) 724-1456

SULLIVAN'S ISLAND BEACH ACCESS
BOARDWALK REPLACEMENT AT
STATION 24
SULLIVAN'S ISLAND, SOUTH CAROLINA

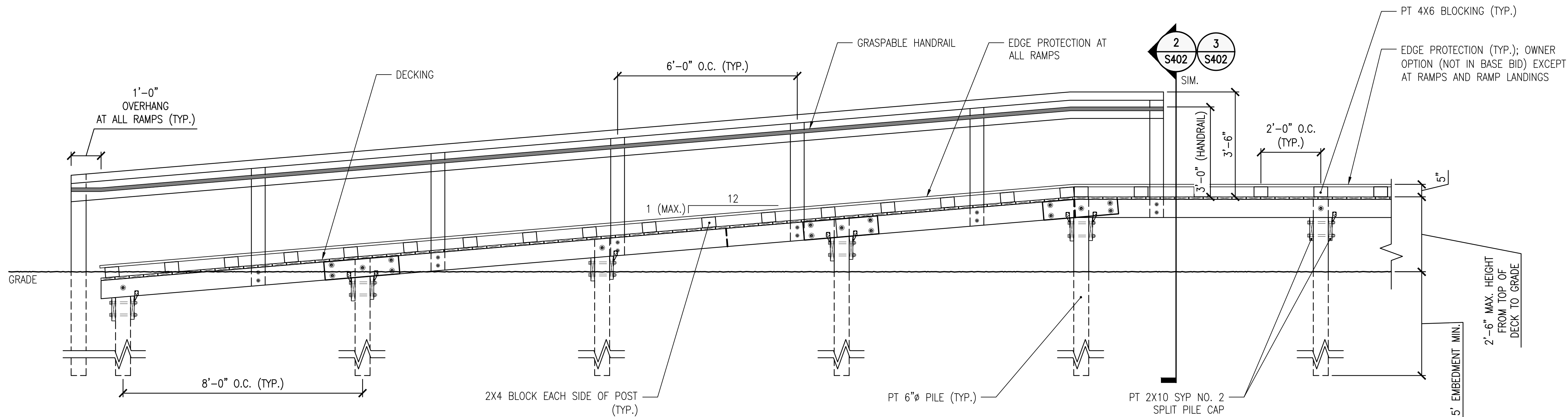
BID SET DATE:	12/05/2025
DESIGN BY:	ALM
DRAWING BY:	MAE
CHECKED BY:	RMF
PROJECT NO.:	800.25043

PLANS
SHEET
S103

THIS PRINT IS THE PROPERTY OF APPLIED BUILDING SCIENCES, INC. AND IS NOT TO BE USED FOR CONSTRUCTION, DESIGN, OR REPRODUCED WITHOUT PRIOR CONSENT. THESE DRAWINGS MUST BE PRINTED IN COLOR. ALL SCALES DEPICTED ON THESE SHEETS ARE FOR 24 X 36 PRINTS.



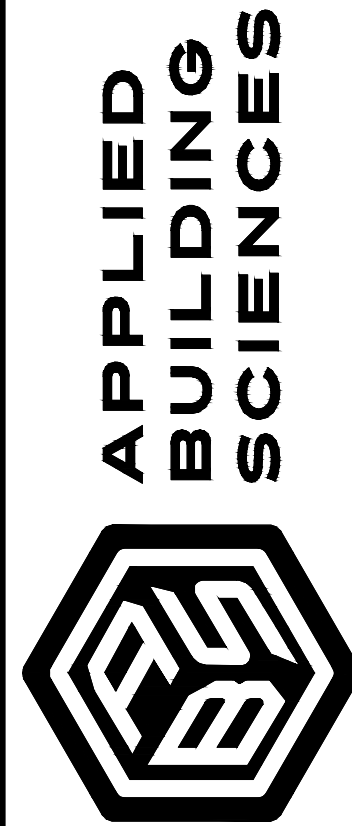
1 TYPICAL ELEVATION WITH GUARDS
SCALE: 1" = 1'-0"



3 TYPICAL RAMP ELEVATION WITH HANDRAIL
SCALE: 1/2" = 1'-0"

NOTES

- 1) MAXIMUM RISE FOR A SINGLE RAMP SHALL BE 2'-6".
- 2) RAMPS WITH A RISE GREATER THAN 2'-6" SHALL BE SEPARATED BY LANDINGS NOT LESS THAN 5'-0" IN LENGTH SUCH THAT EACH RUN SHALL HAVE A RISE OF NO MORE THAN 2'-6".
- 3) ANY PORTION OF THE BOARDWALK WITH A SLOPE IN THE DIRECTION OF TRAVEL EXCEEDING 5% SHALL BE CONSIDERED A RAMP AND SHALL HAVE GRASPABLE HANDRAILS ON BOTH SIDES OF THE BOARDWALK. SEE SECTION 1014.3 OF THE 2021 SCBC FOR GRASPABILITY REQUIREMENTS.
- 4) HANDRAILS SHALL HAVE MIN. 12" HORIZONTAL EXTENSIONS AT TOP AND BOTTOM OF ALL RAMPS.



2308 COSGROVE AVENUE
NORTH CHARLESTON, SC 29405
OFFICE (843) 724-1456

SULLIVAN'S ISLAND BEACH ACCESS
BOARDWALK REPLACEMENT AT
STATION 24
SULLIVAN'S ISLAND, SOUTH CAROLINA

BID SET DATE: 12/05/2025

DESIGN BY: ALM
DRAWING BY: MAE
CHECKED BY: RMF
PROJECT NO.: 800.25043

ELEVATIONS

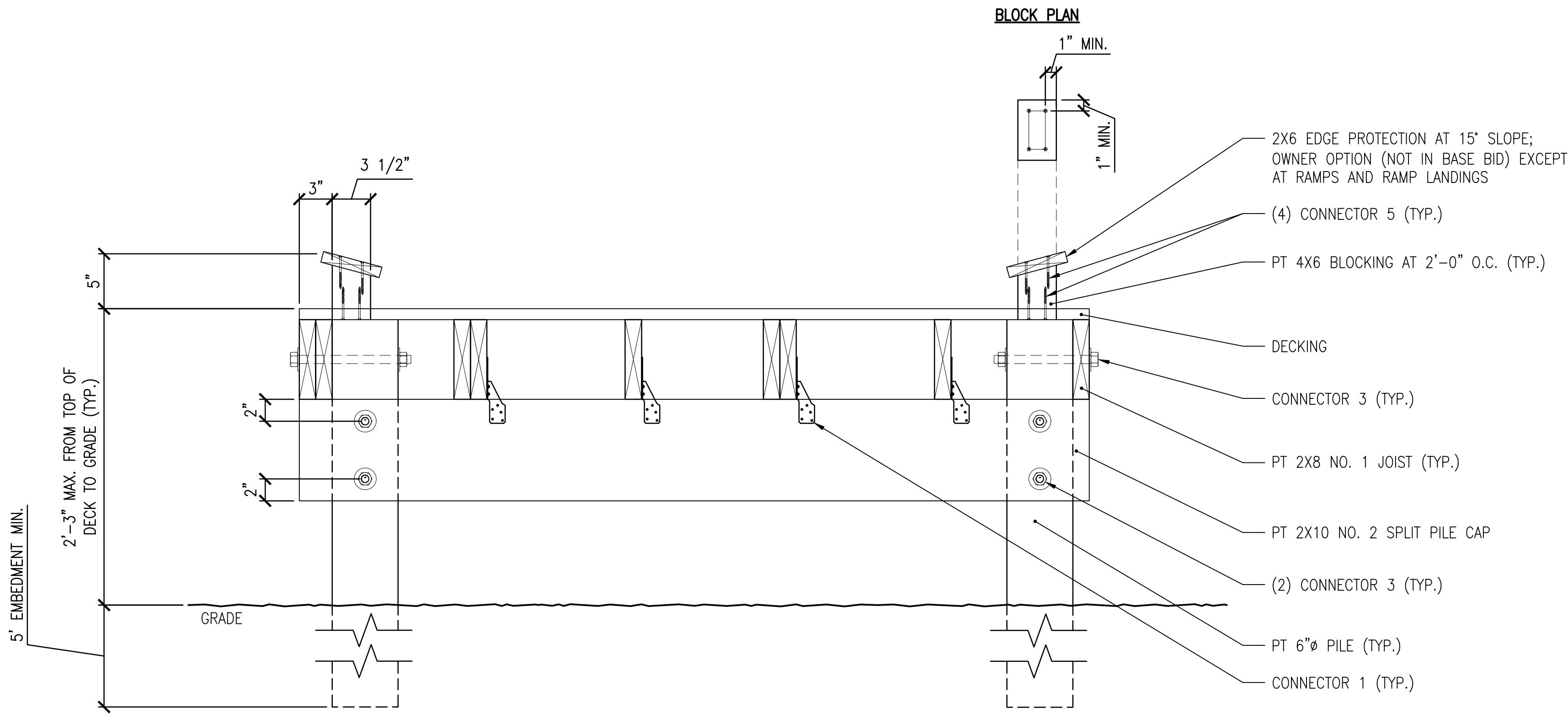
SHEET

S201

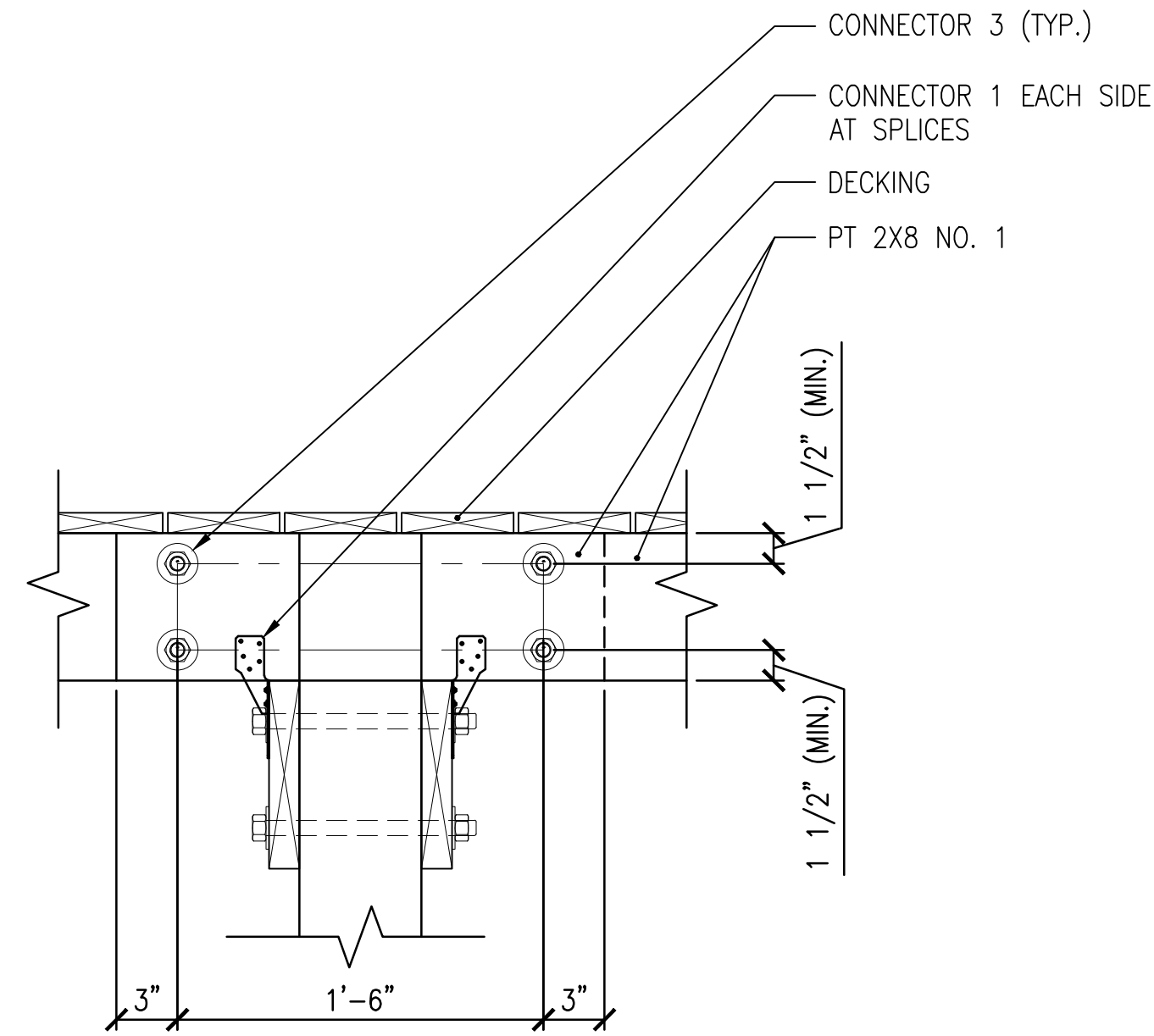
BID SET
NOT FOR
CONSTRUCTION

THIS PRINT IS THE PROPERTY OF APPLIED BUILDING SCIENCES, INC. AND IS NOT TO BE USED FOR CONSTRUCTION, DESIGN, OR REPRODUCED WITHOUT PRIOR CONSENT. THESE DRAWINGS MUST BE PRINTED IN COLOR. ALL SCALES DEPICTED ON THESE SHEETS ARE FOR 24 X 36 PRINTS.

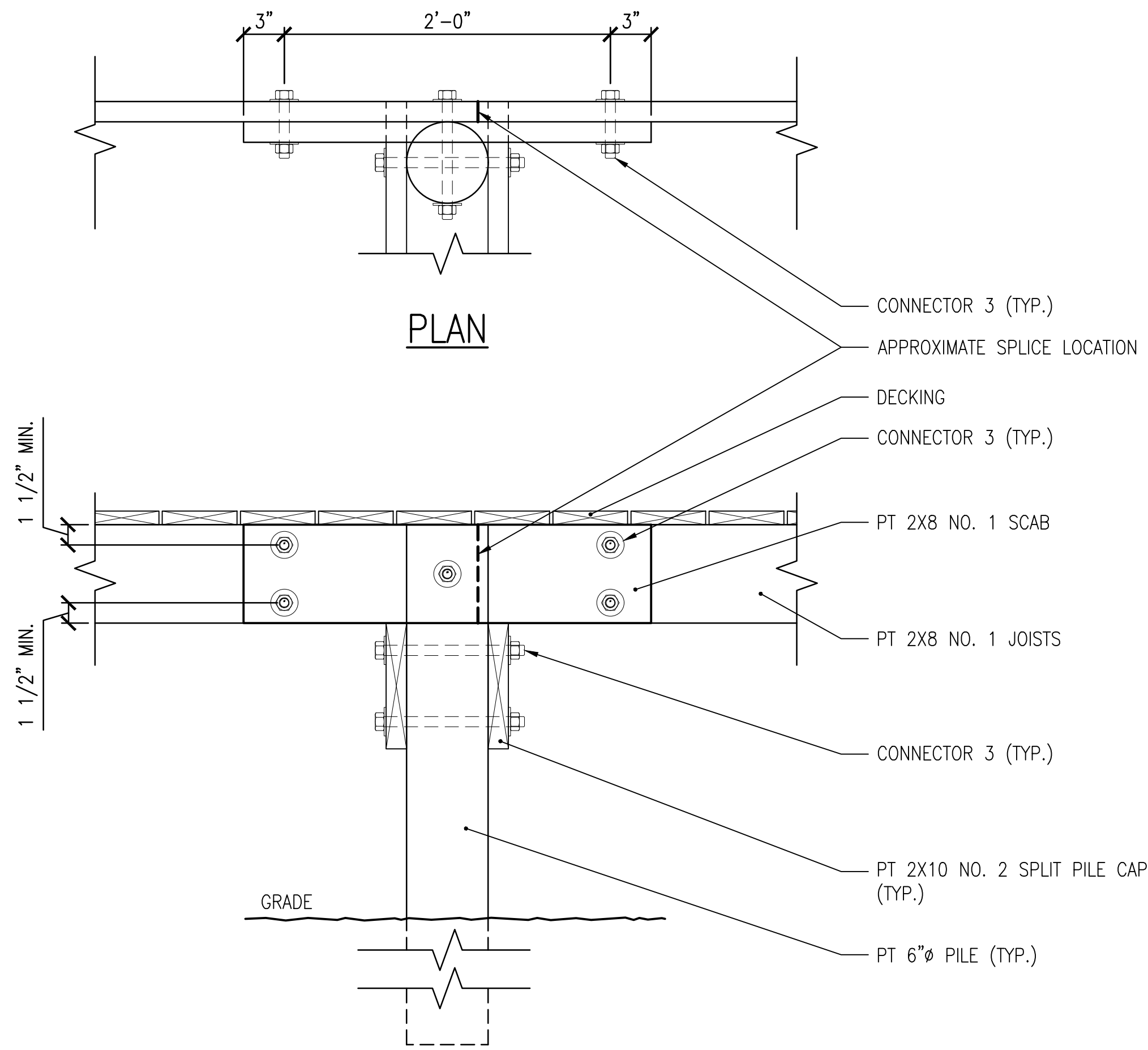
THIS PRINT QUALITY SCALE SHOWS 6 SHADED BOXES. IF 6 BOXES ARE NOT CLEARLY DEFINED, THE ORIGINAL QUALITY AND DESIGN MAY NOT DISPLAY AS INTENDED.



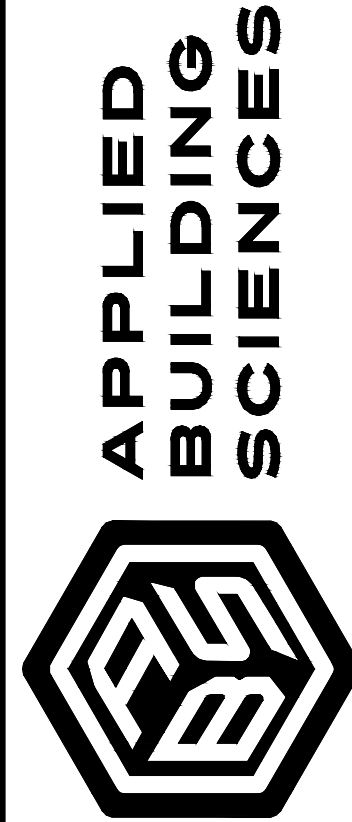
1 BOARDWALK SECTION
SCALE: 1-1/2" = 1'-0"



2 LAP SPLICE
SCALE: 1-1/2" = 1'-0"



3 SCAB SPLICE
SCALE: 1-1/2" = 1'-0"



2308 COSGROVE AVENUE
NORTH CHARLESTON, SC 29405
OFFICE (843) 724-1456

SULLIVAN'S ISLAND BEACH ACCESS
BOARDWALK REPLACEMENT AT
STATION 24

SULLIVAN'S ISLAND, SOUTH CAROLINA

BID SET DATE: 12/05/2025

DESIGN BY: ALM
DRAWING BY: MAE
CHECKED BY: RMF
PROJECT NO.: 800.25043

DETAILS

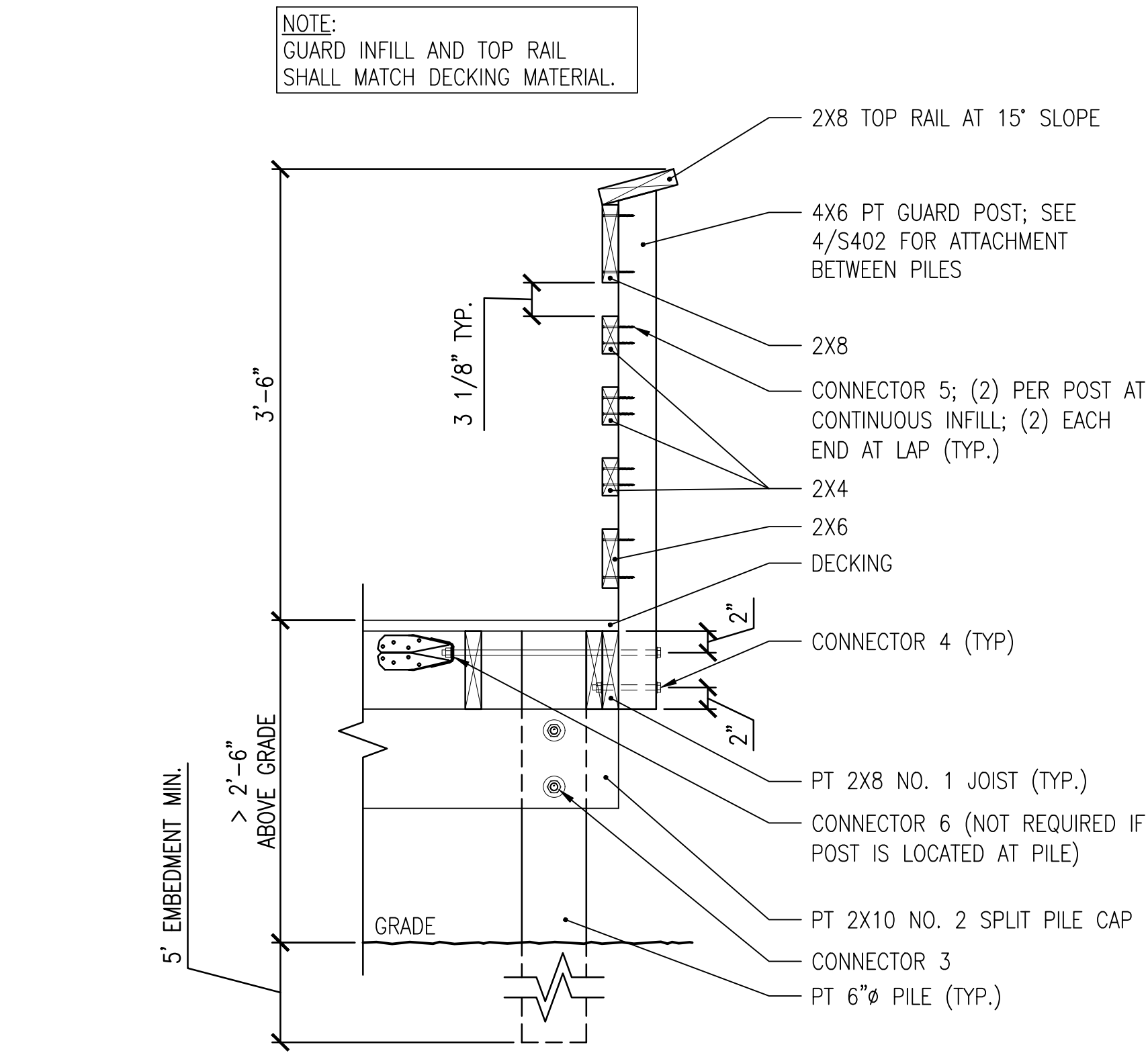
SHEET

S401

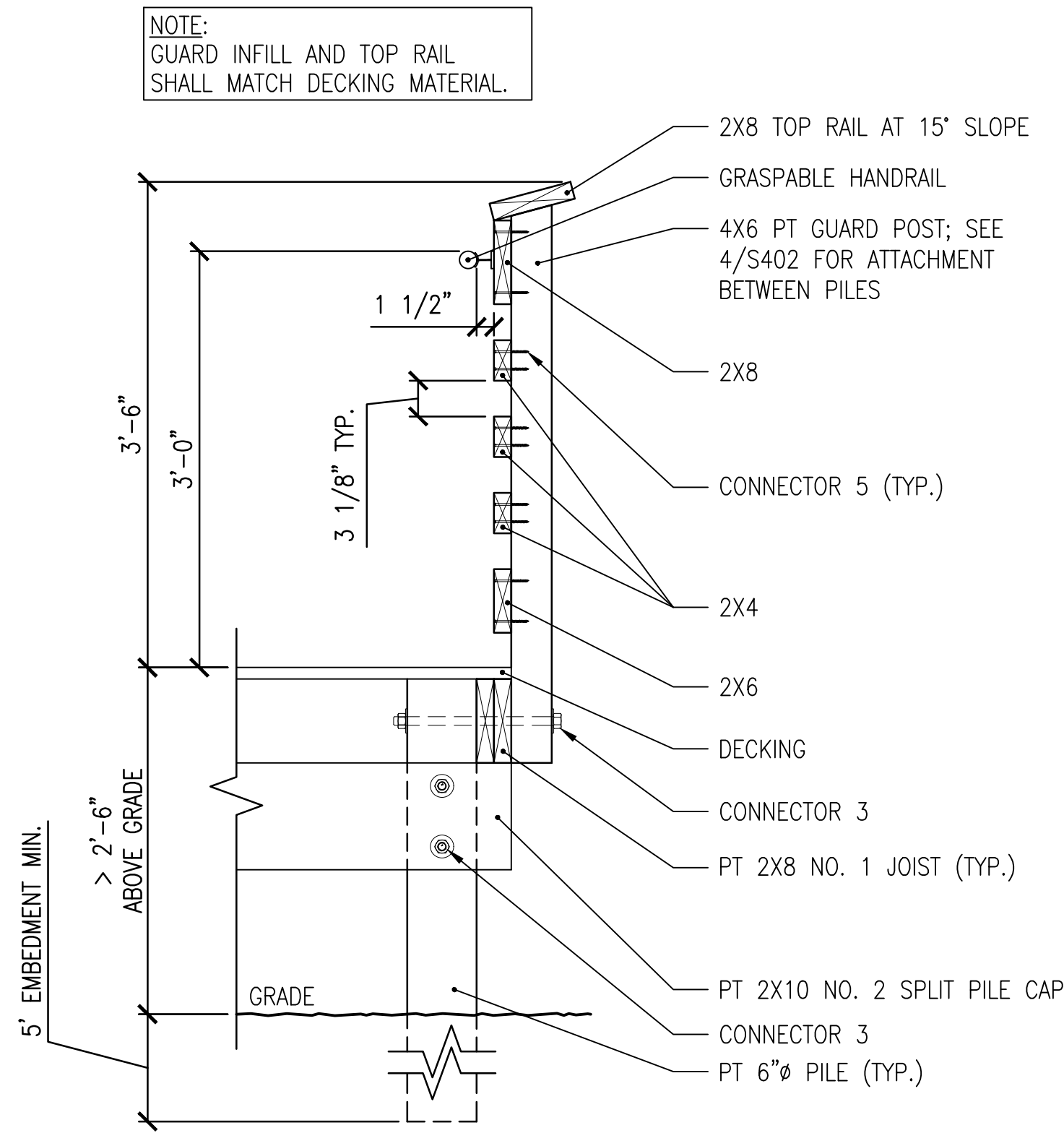
BID SET
NOT FOR
CONSTRUCTION

THIS PRINT IS THE PROPERTY OF APPLIED BUILDING SCIENCES, INC. AND IS NOT TO BE USED FOR CONSTRUCTION, DESIGN, OR REPRODUCED WITHOUT PRIOR CONSENT. THESE DRAWINGS MUST BE PRINTED IN COLOR. ALL SCALES DEPICTED ON THESE SHEETS ARE FOR 24 X 36 PRINTS.

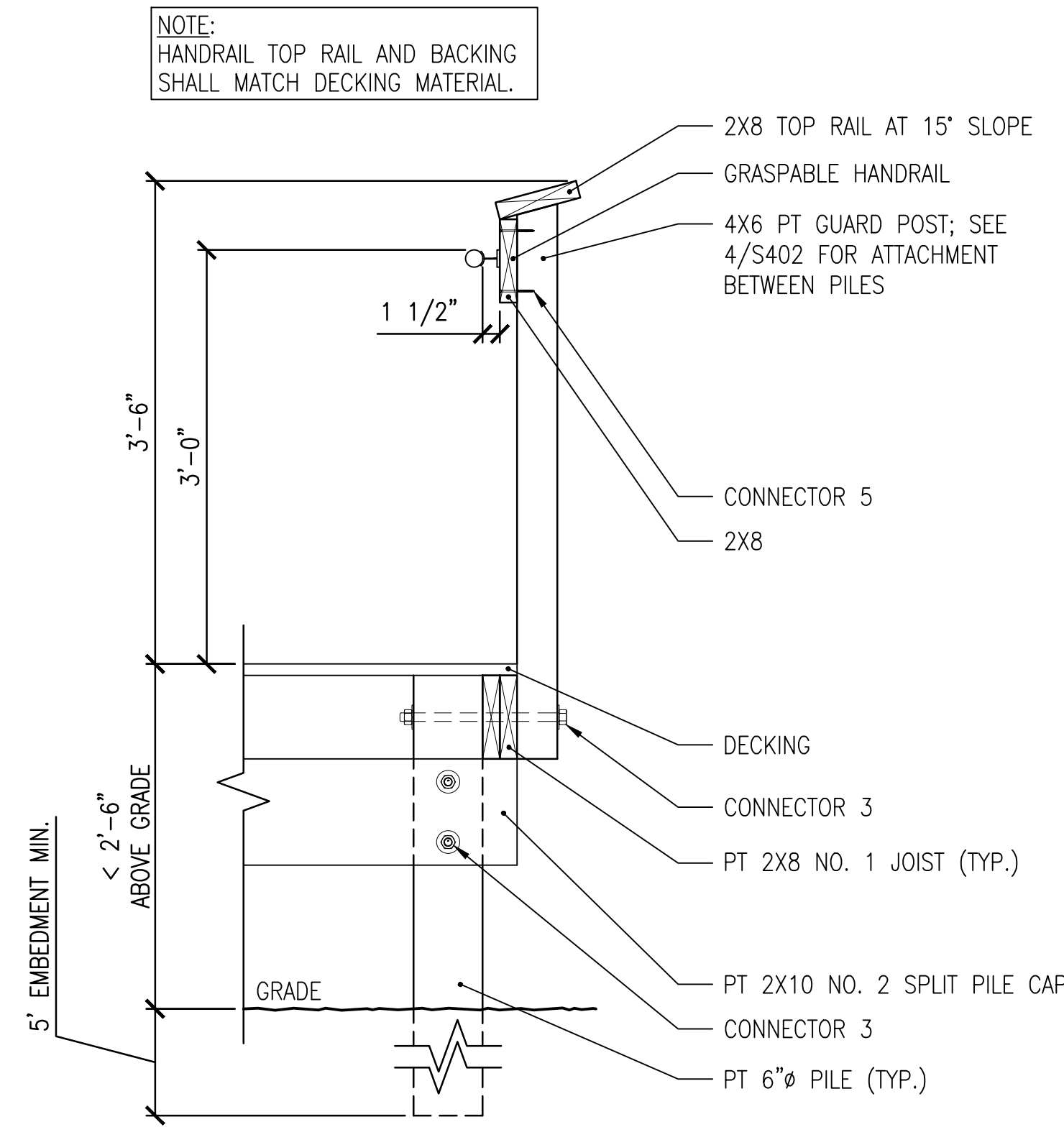
THIS PRINT QUALITY SCALE SHOWS 6 SHADED BOXES. IF 6 BOXES ARE NOT CLEARLY DEFINED, THE ORIGINAL QUALITY AND DESIGN MAY NOT DISPLAY AS INTENDED.



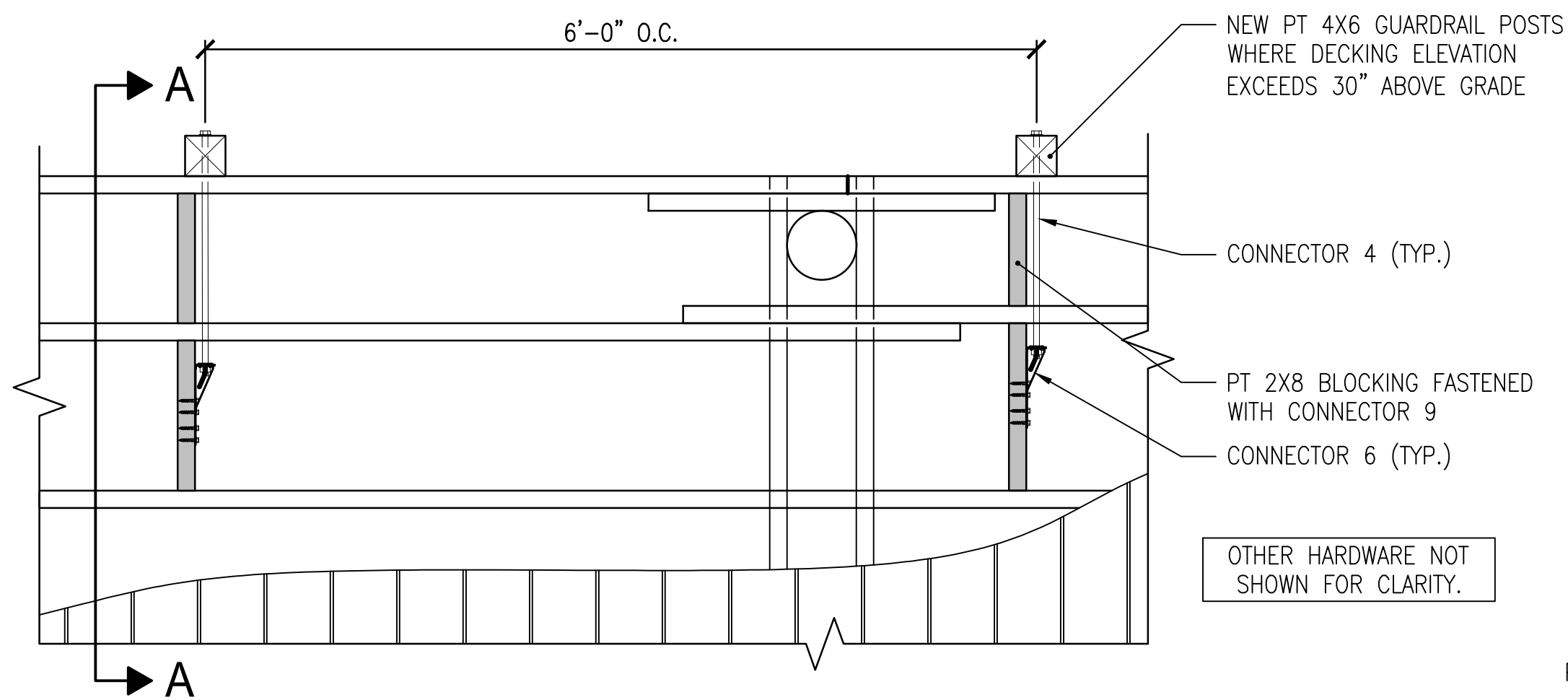
1 TYPICAL GUARD SECTION
SCALE: 1" = 1'-0"



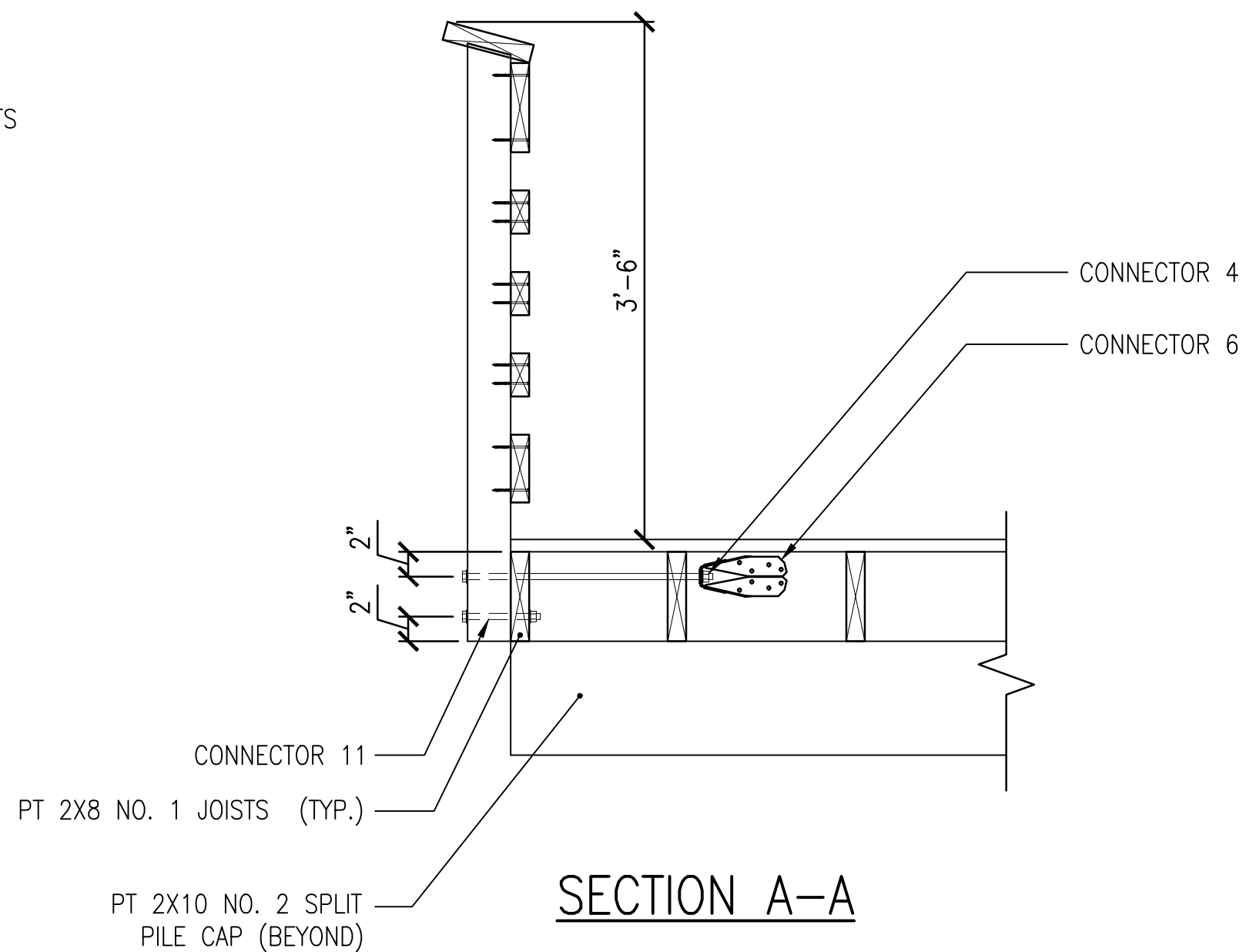
2 TYPICAL GUARD SECTION WITH GRASPABLE RAIL AT PILE
SCALE: 1" = 1'-0"



3 TYPICAL HANDRAIL WITH NO GUARD INFILL
SCALE: 1" = 1'-0"

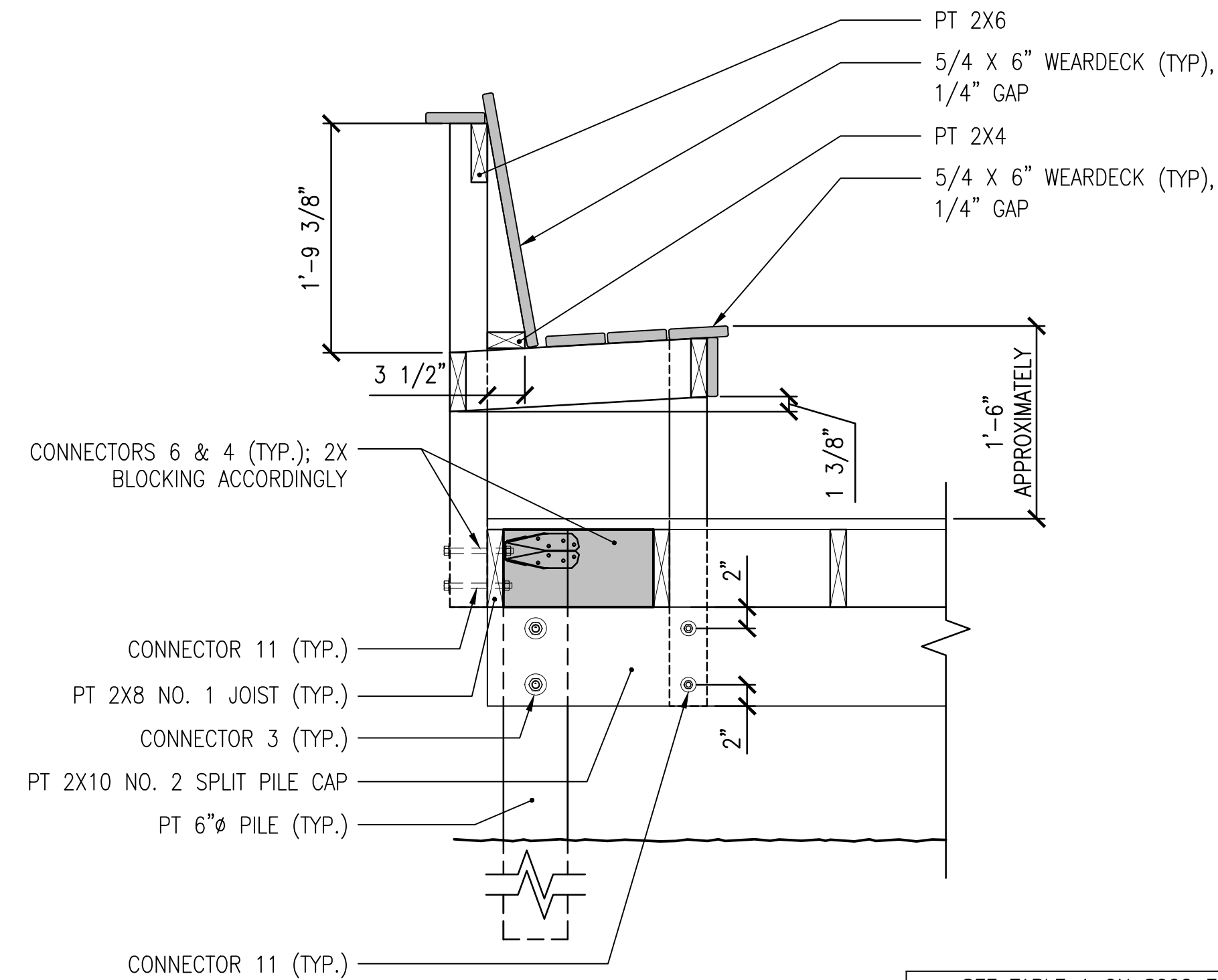


PLAN



SECTION A-A

4 GUARD POST ATTACHMENT BETWEEN PILES
SCALE: 1" = 1'-0"



5 BENCH
SCALE: 1" = 1'-0"

BID SET

NOT FOR CONSTRUCTION

APPLIED BUILDING SCIENCES

2308 COSGROVE AVENUE
NORTH CHARLESTON, SC 29405
OFFICE (843) 724-1456

SULLIVAN'S ISLAND BEACH ACCESS BOARDWALK REPLACEMENT AT STATION 24

SULLIVAN'S ISLAND, SOUTH CAROLINA

BID SET DATE: 12/05/2025

DESIGN BY: ALM

DRAWING BY: MAE

CHECKED BY: RMF

PROJECT NO.: 800.25043

DETAILS

SHEET

S402