

SULLIVAN'S ISLAND BEACHFRONT NATURE TRAIL

Phase 2 (SC Recreational Trails Program)



PHASE 2 OVERVIEW

Development Summary

- There is a pre-existing network of trails used on a daily basis by dog walkers, visitors and nature enthusiasts; Project will add wayfinding signs, trail head signs and provide benches along the way, connecting the Charleston Light to Fort Moultrie.
- The trail is a 6-10' wide sand path and increases accessibility between Station 18 and 18 ½ with phenomenal views of the lighthouse and ocean.
- This provides an excellent educational opportunity to highlight the maritime forest and dune communities, as the path transitions from closed canopy to scrub thickets to early successional dune communities.



Development Summary

- SCPRT Funding Opportunity identified in 2018 Comprehensive Plan, pursued and awarded based on public comments (see Comp Plan 2018 App. A) regarding extending the trail and placing it on higher ground to avoid flooded conditions of Phase I nature trail

PHASE 2 OVERVIEW



2018
Comprehensive
Plan pg. 35

PHASE 2 OVERVIEW

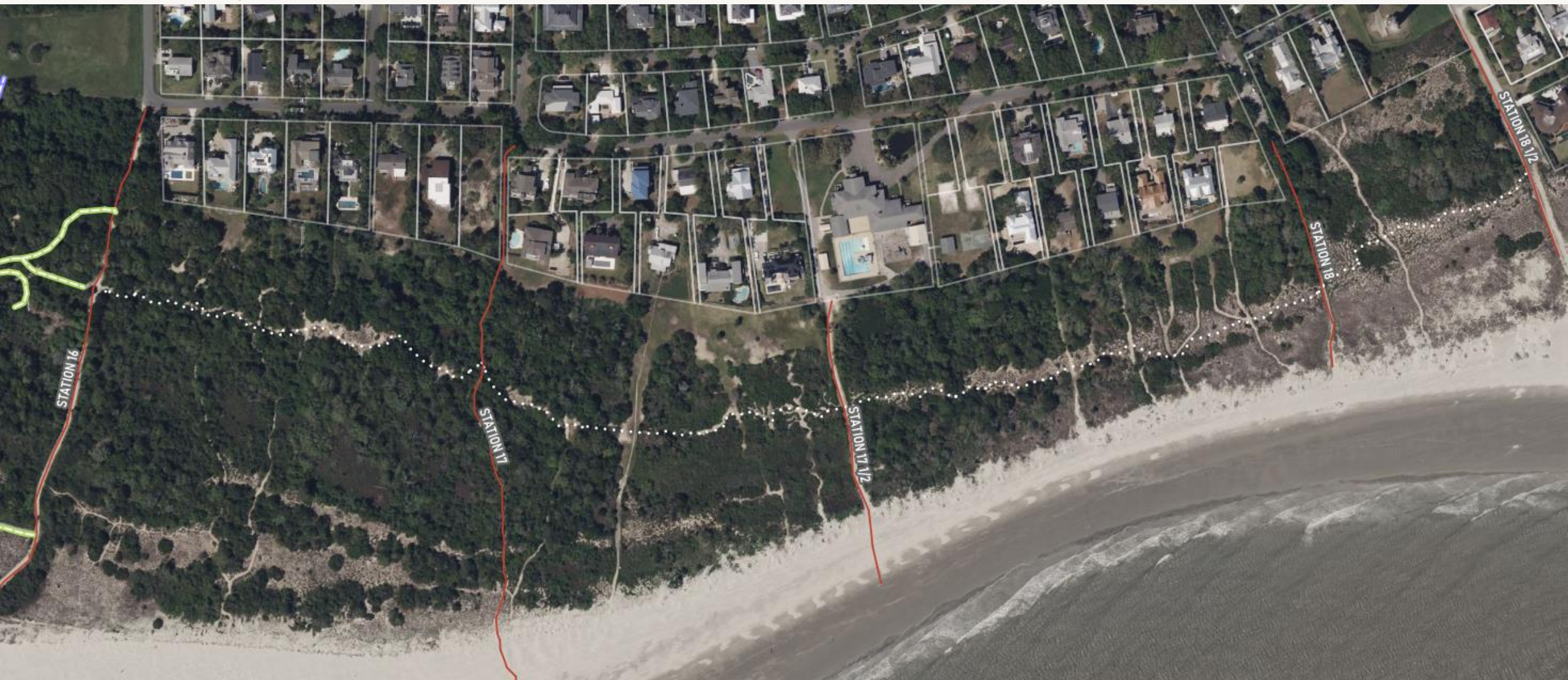
Trail Summary

- Distance - $\frac{3}{4}$ mile along existing foot path, offering for 1 $\frac{1}{2}$ mile loop with beach
- Minimal tree and brush clearing
 - 3 Saplings ~1.5" diameters
 - Wax Myrtle thicket
 - Greenbriar and Poison Ivy
- 6-8 benches + 3 Eagle Scout Benches
- ADA matting at foot of lighthouse (550' feet)
- 300' of boardwalks , including ramps to beach access boardwalks and 2 low spots



TRAIL VIEWS

Trail Summary

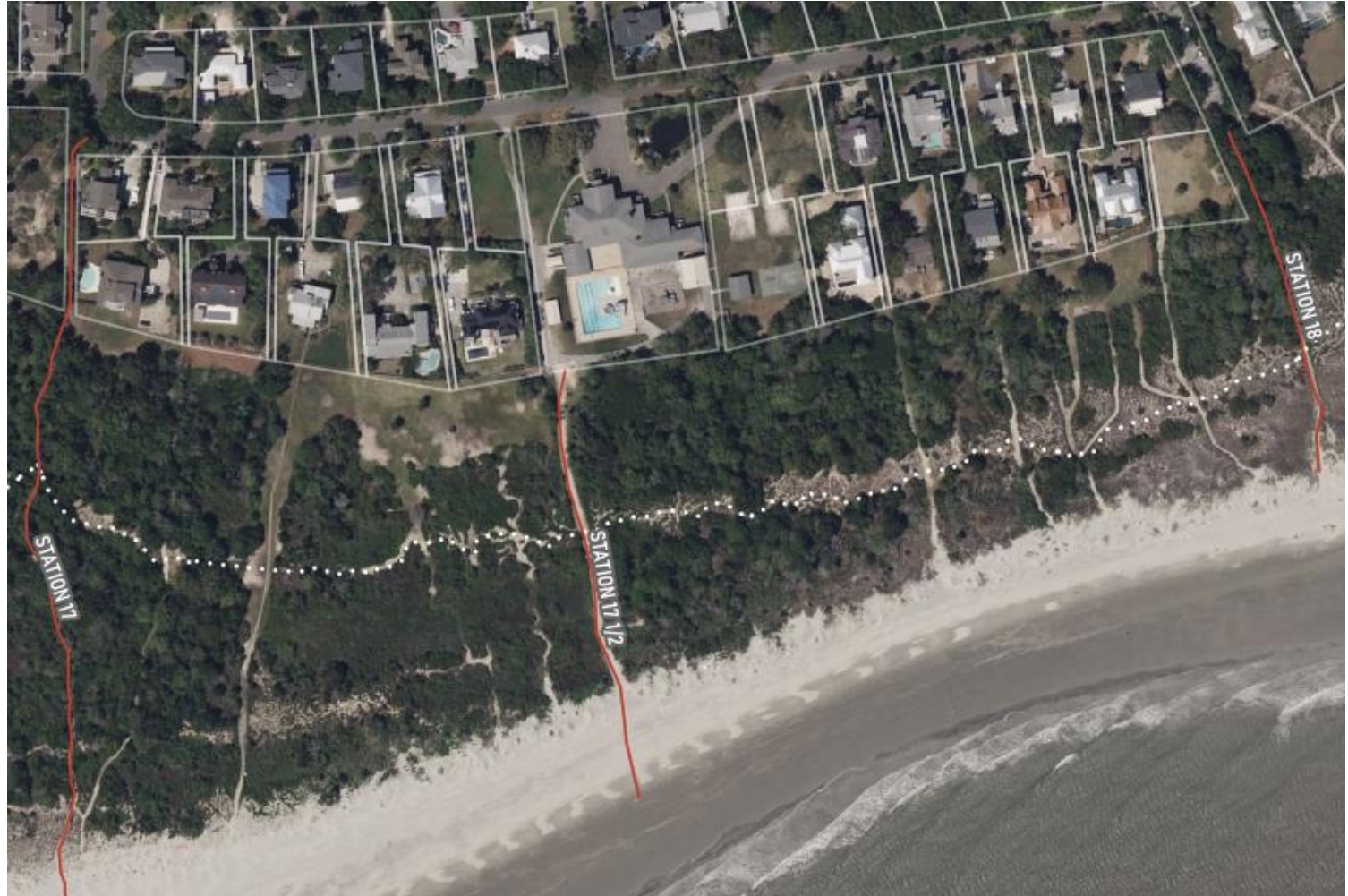


STATION 17 TO 18 - TRAIL VIEWS

Pre-Existing Phase II Trail Photos



JUNE 2024



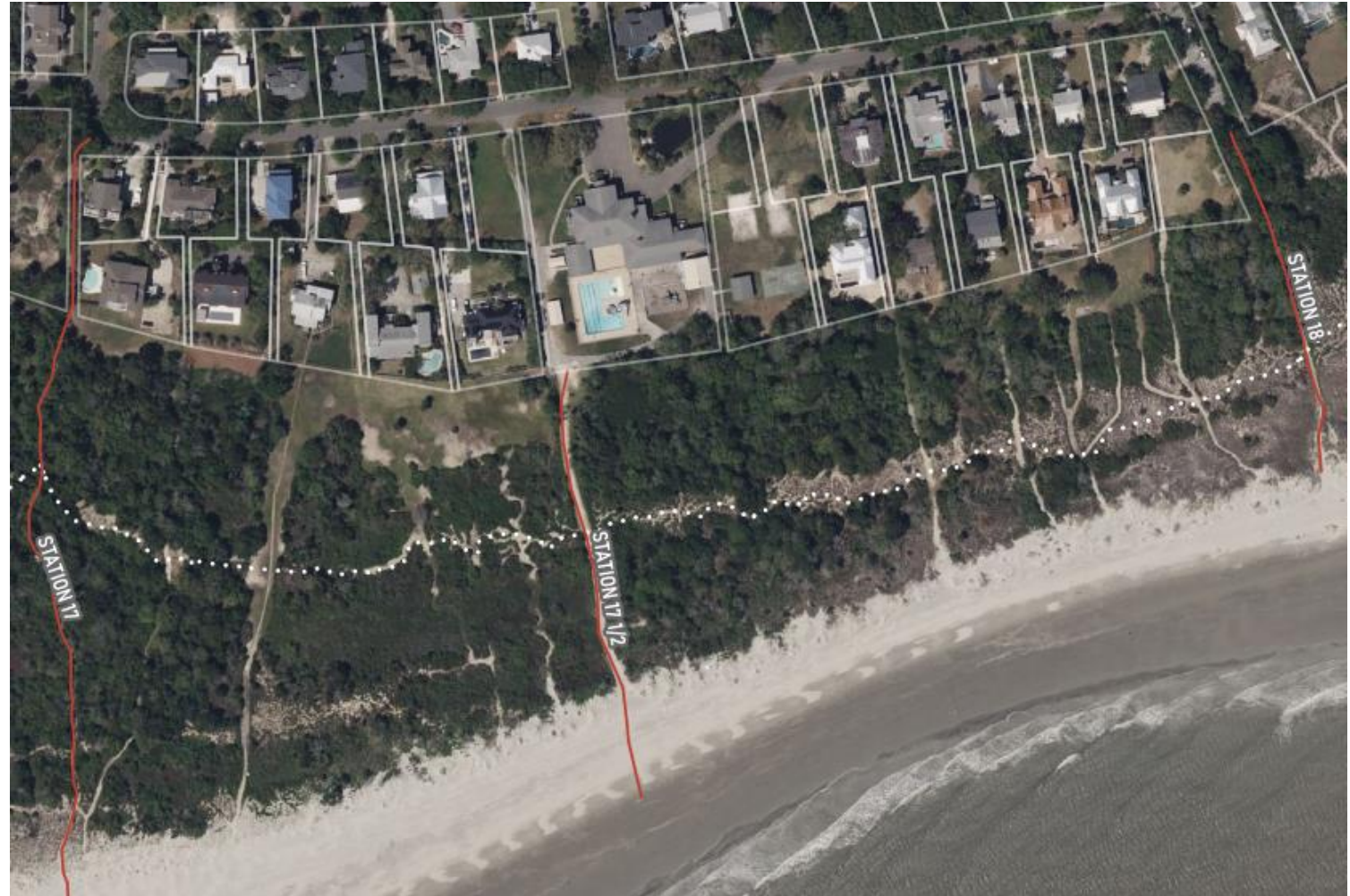
PRT RECREATIONAL TRAILS PROGRAM 2023

STATION 17 TO 18 - TRAIL VIEWS

Pre-Existing Phase II Trail Photos



JUNE 2024



PRT RECREATIONAL TRAILS PROGRAM 2023

TRAIL VIEWS

Current Views



TRAIL VIEWS



MOBI MAT



QUESTIONS?

