

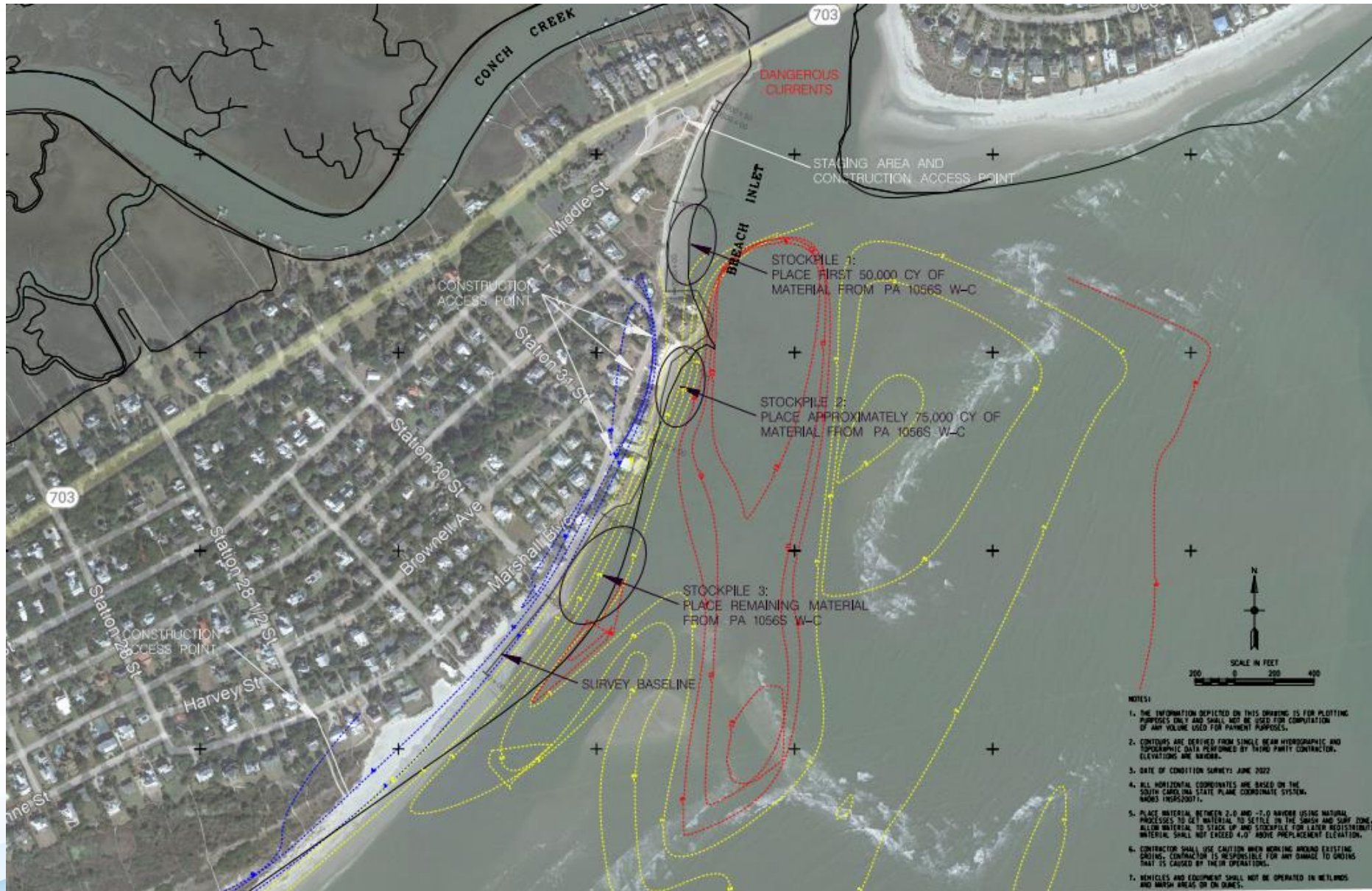


# Town of Sullivan's Island USACE Supplemental Project Update



# USACE Project Status

- Sand placement expected to start this week (~Aug 20)
- Placement in three locations along Breach Inlet
- Total expected volume 757,000 cy (IOP and Sullivans)
- Expected Sullivans Quantity – 160,000 – 200,000
- Sand will be placed along lower intertidal beach and not shaped into beach
- Construction thru September or early October
- Work will occur 24/7
- Temporary beach closures within active construction area
- Public safety, beach closure areas are contract responsibility of Ahtna
- Beneficial use project vs beach nourishment project



- NOTES**
1. THE INFORMATION DEPICTED ON THIS DRAWING IS FOR PLOTTING PURPOSES ONLY AND SHALL NOT BE USED FOR COMPUTATION OF ANY VOLUME USED FOR PAYMENT PURPOSES.
  2. CONTOURS ARE DERIVED FROM SINGLE BEAM HYDROGRAPHIC AND TOPOGRAPHIC DATA PERFORMED BY THIRD PARTY CONTRACTOR. ELEVATIONS ARE MHW.
  3. DATE OF CONDITION SURVEY: JUNE 2022
  4. ALL HORIZONTAL COORDINATES ARE BASED ON THE SOUTH CAROLINA STATE PLANE COORDINATE SYSTEM, NAD83 (NSRS2011).
  5. PLACE MATERIAL BETWEEN -2.0 AND -7.0 NAVD83 USING NATURAL PROCESSES TO GET MATERIAL TO SETTLE ON THE BRUSH AND SAND ZONE. ALLOW MATERIAL TO STACK UP AND STOCKPILE FOR LEAK RESISTANT MATERIAL SHALL NOT EXCEED 4.0' ABOVE REPLACEMENT ELEVATION.
  6. CONTRACTOR SHALL USE CAUTION WHEN WORKING AROUND EXISTING GRIDS. CONTRACTOR IS RESPONSIBLE FOR ANY DAMAGE TO GRIDS THAT IS CAUSED BY THEIR OPERATIONS.
  7. VEHICLES AND EQUIPMENT SHALL NOT BE OPERATED IN WETLANDS AND MARSH AREAS OR ON DUNE.

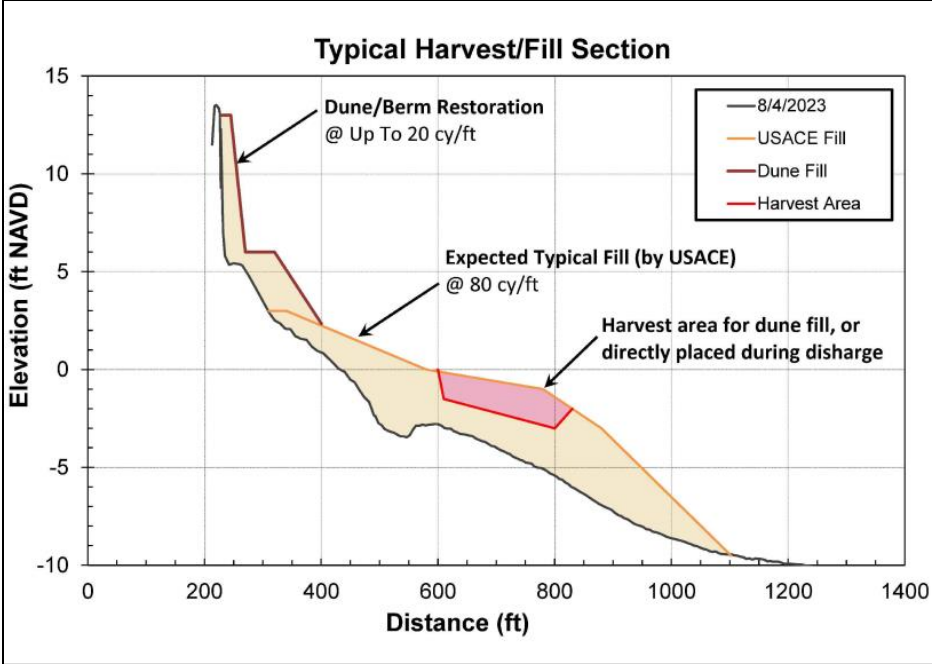


# Town Sponsored Supplemental Project

- Purpose: Utilize available sand resource to restore dunes, improve storm protection, improve public access, and prolong sand retention
- Scope: Transfer up to 71,000 cy of sand from USACE placement to higher elevations
- Includes stockpile area for sand resource for future use by Town/owners
- Approximately 50% of sand would be for dune restoration, remainder for dry sand beach construction
- Shifts material away from Breach Inlet currents into more stable and beneficial areas
- Costs are expected to be 10-20% compared to trucking sand from inland.

# Scope

**Note:**  
 The sand source will be provided by USACE from the FY24 beneficial use sediment rehandling at Breach Inlet, AIWW project No.9674 (Sheet C03)  
**Material Source:** PA 1056S W-C (AIWW adjacent to Swinton Creek)

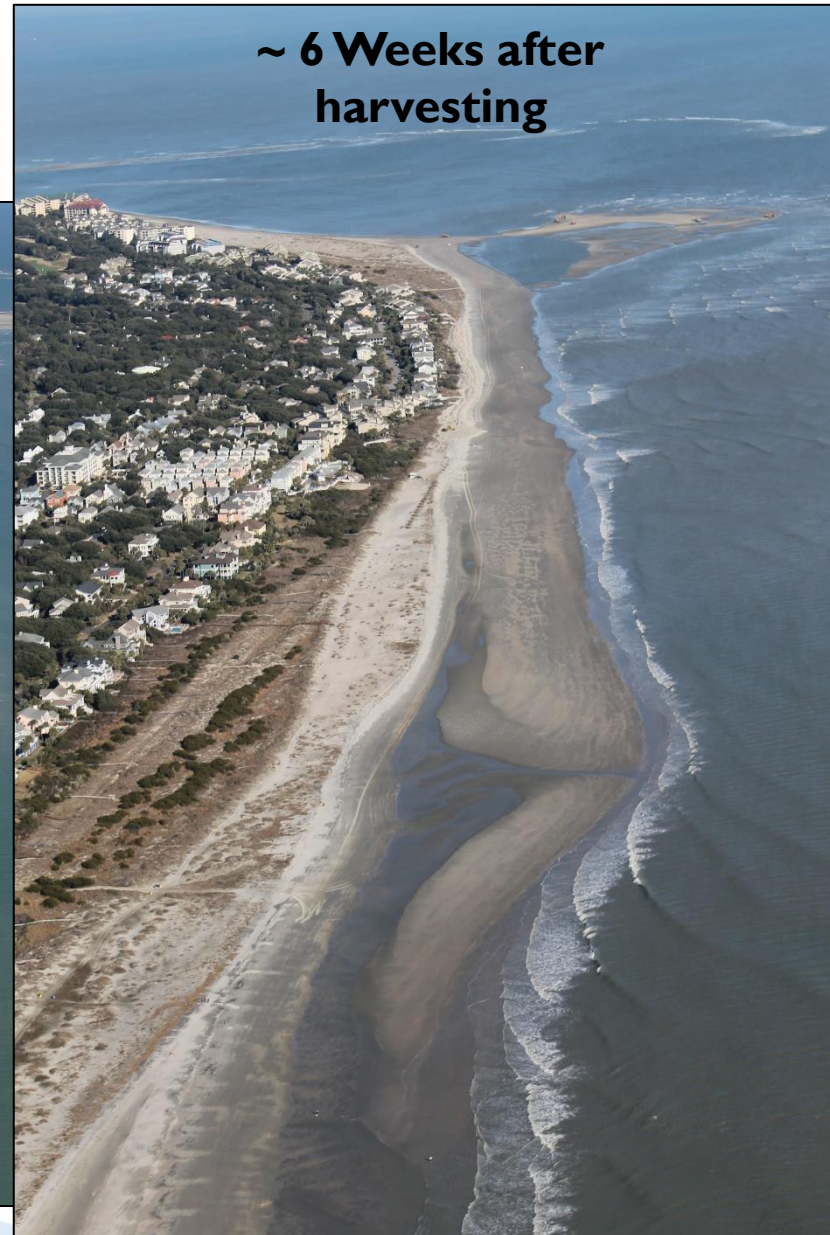


# Expectations

- Project construction 2-3 weeks
- Permit being reviewed with agencies, expected state permit in 2-3 weeks
- Currently in bid process for work
  - Opening bids on Aug 30<sup>th</sup>, expected award September 17<sup>th</sup>.
- Work will focus on improvements to dune protection, access over/around structures, expansion of recreational area around Thompson Park, overall management of sand supply on western end
- Work in conjunction with USACE contractors as much as practicable to minimize public impacts



# Sand Transfer Process





# Recommendation

- Assuming a reasonable bid, CSE and Elko Coastal recommend the Town proceed with awarding the full permit scope to take advantage of the USACE sand resource.
- Consideration of bids at workshop on Sept 9 with final recommendation, Council meeting Sept 17
- Permitting work and construction administration have already been approved by the Town under prior agreements.

