

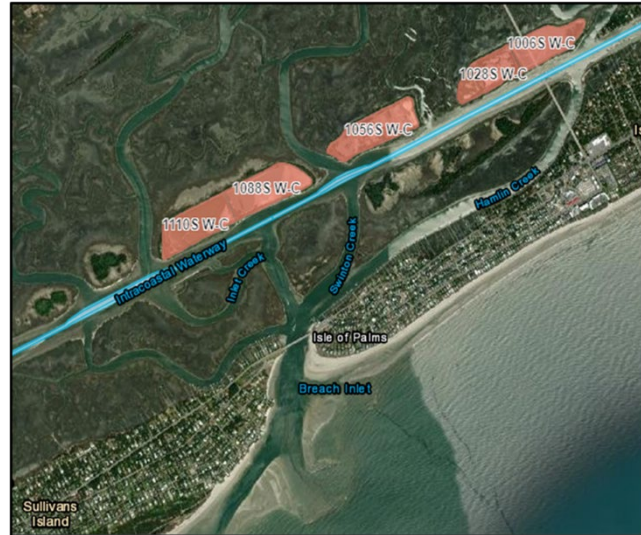


FY24 Beneficial Use Sediment Rehandling at Breach Inlet Atlantic Intracoastal Waterway (AIWW) Operation & Maintenance

Frequently Asked Questions:

What is the purpose of this project?

- The primary purpose of this project is to support the Operation & Maintenance (O&M) of the AIWW by removing previously dredged sediment from several upland dredged material placement areas along the waterway. The capacity gained in the placement areas will support the future dredging needs of the AIWW. Since the sediment is primarily sand, the project has the opportunity to beneficially use this sediment to support local beaches. The sediment will be excavated from the placement areas and transported hydraulically via dredge to the beaches adjacent to Breach Inlet on Isle of Palms and Sullivan's Island. The project is funded in part by the Bi-partisan Infrastructure Law (BIL) as well as regular AIWW O&M Funding.



Where will the sediment be placed?

- The project will place approximately 500,000 cubic yards of sand along the intertidal zone (below high tide) between 2nd and 10th Avenue on Isle of Palms. The project also includes placing approximately 200,000 cubic yards of sand on Sullivan's Island near the inlet.

Why will it be placed below high tide line?

- The project does not seek to build a dry sand beach like a traditional beach re-nourishment. This is for two reasons; to reduce project cost and to allow tidal cycles to “wash” the sediment of undesirable materials (silts, clay, vegetation, etc.). The sand will naturally migrate up and along the beach over time. Harvesting the sand for use under a separate project will require a Regulatory Permit from the Charleston District.

When will the project begin and end?

- Construction started in July in the AIWW placement areas. Clearing, dewatering, and material stockpiling is ongoing. It is expected that sediment placement will start on Sullivan's Island starting mid to late August and is expected to take 4-6 weeks. Placement on Isle of Palms will follow and is

expected to continue for approximately 4 months. Beach placement will be a 24/7 operation with heavy equipment on the beach during this time. The required contract completion date is January 26, 2025.

Will the project prevent public access to the beach?

- Access to the beach will be preserved to the maximum extent practical. For the safety of beachgoers and the crews working, during placement operations portions of the beach will be closed in the immediate work area. Where dredge pipes transit the beach, the contractor will be required to provide access ramps over the pipe at public access points and a minimum of every 300' along the pipeline. Closures of the beach will be minimized to limit impacts to the public. We have confidence that any short-term inconveniences caused by the project are outweighed by its long-term benefits.

What measures are being taken to protect turtle nests and other endangered species on the beach?

- The contractor is required to employ night-time beach monitoring and is also partnering with the local turtle team volunteers who will survey project locations to ensure compliance with federal protocols for endangered species. The turtle monitoring team will monitor the beach to ensure that the project will not affect sea turtle nesting. The nesting and hatching season for sea turtles on these beaches is May 1st through October 31st.

Questions?

<https://www.sac.usace.army.mil/Contact/>