

# EXISTING CONDITIONS





OVERARCHING THEMES FROM PUBLIC MEETING #1

Following the analysis of feedback and comments from our first community outreach meeting, the following prominent themes have emerged:

PRESERVATION OF NATURAL ELEMENTS AND EXISTING ISLAND CONTEXT:

The community has emphasized the importance of architectural design, play equipment, and materials that harmonize with nature, preserving the island's unique context.

COMMUNITY GATHERING SPACE:

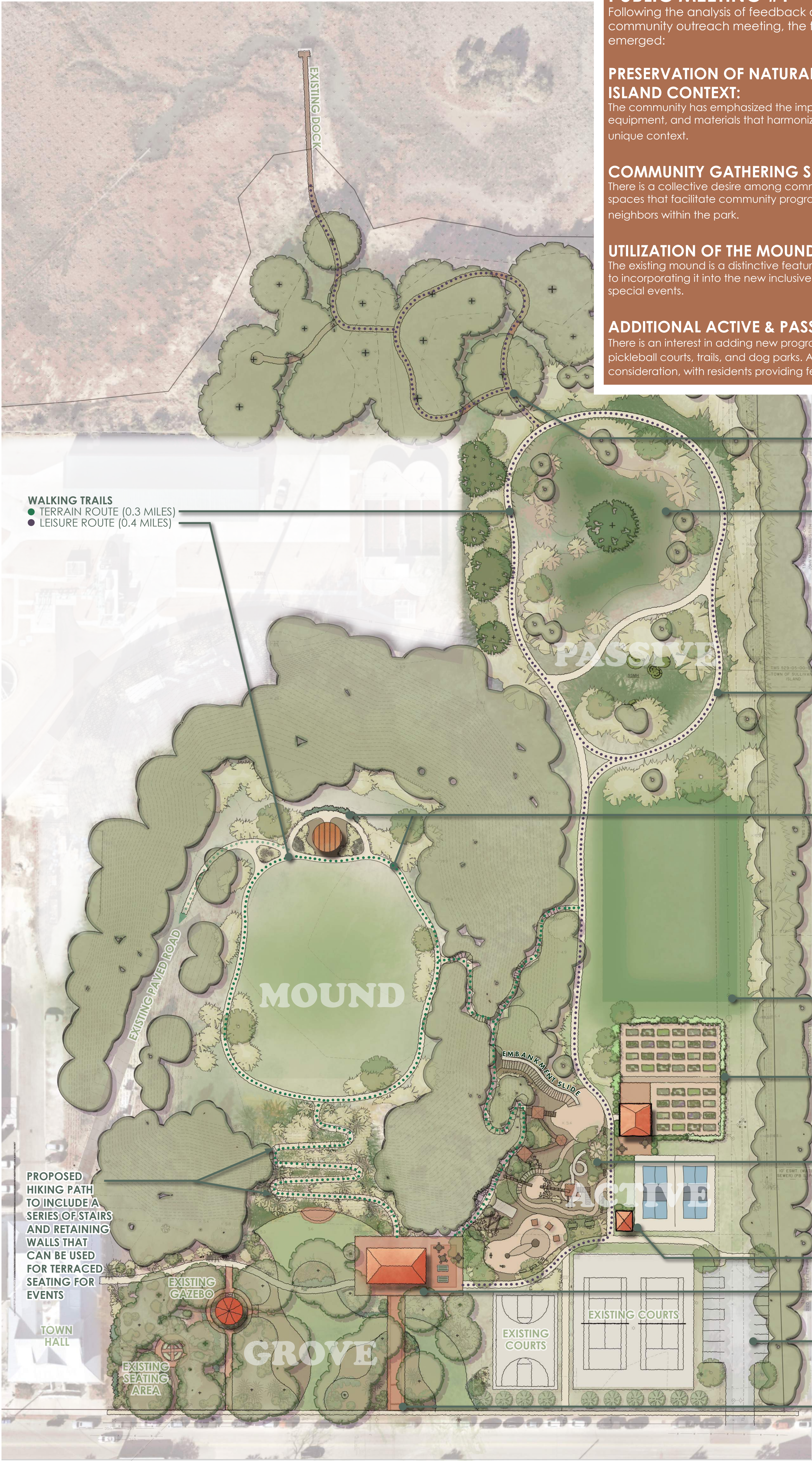
There is a collective desire among community members for well-defined spaces that facilitate community programming and connections with neighbors within the park.

UTILIZATION OF THE MOUND:

The existing mound is a distinctive feature in the park, and residents are open to incorporating it into the new inclusive playground and using its top for special events.

ADDITIONAL ACTIVE & PASSIVE PROGRAMMING:

There is an interest in adding new programming within the park, such as pickleball courts, trails, and dog parks. A community garden is also under consideration, with residents providing feedback on this option.





# CONCEPTUAL MASTER PLAN



## OPTION 1

- (A) TWO PICKLE BALL COURTS
- (B) SHADED STRUCTURE TO SERVE SPORTS COURTS AND PLAY AREAS
- (C) COMMUNITY GARDEN
  - SHADED STRUCTURE
  - GARDENING STATIONS
  - WORKSHOP/LEARNING AREA

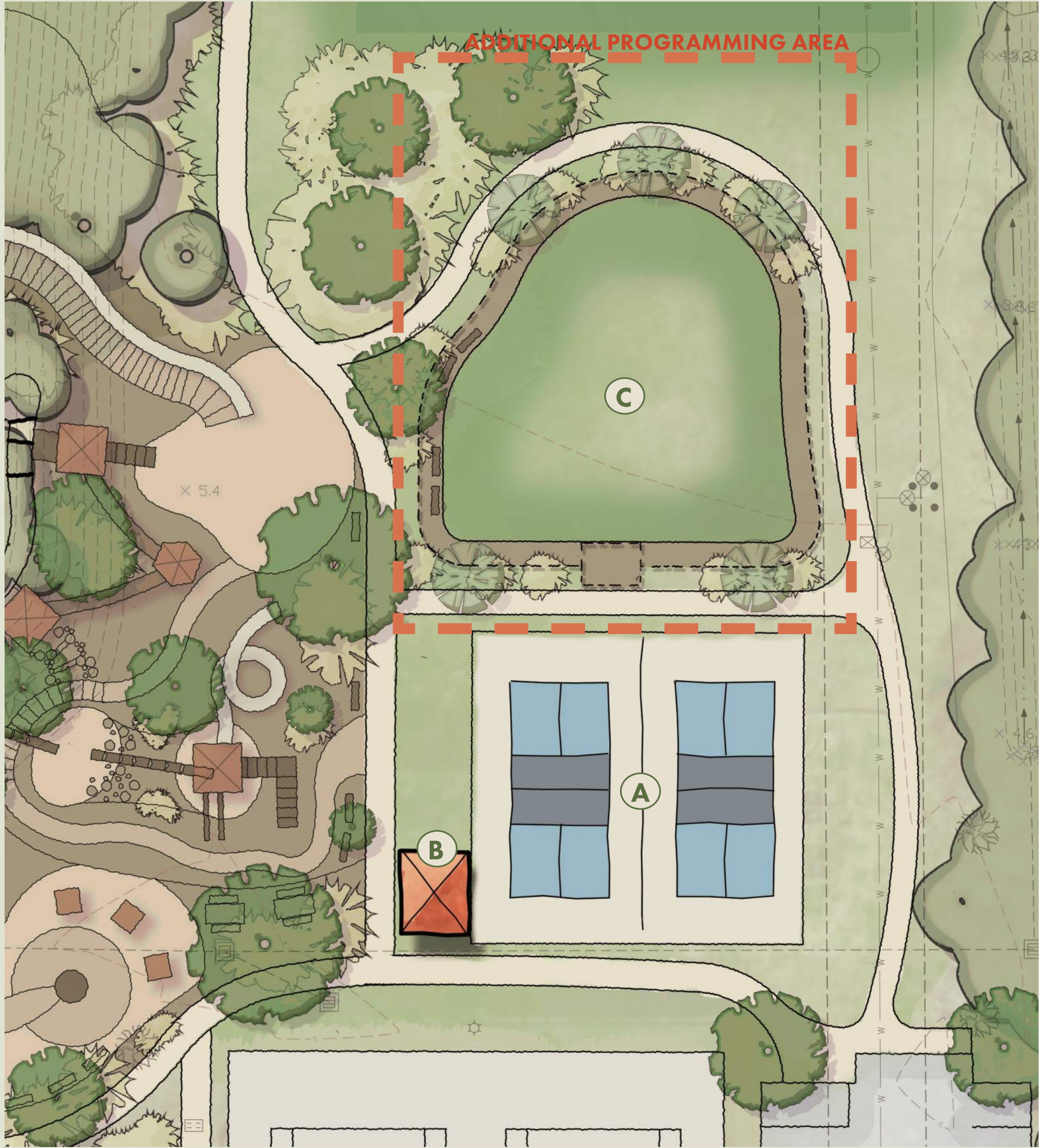
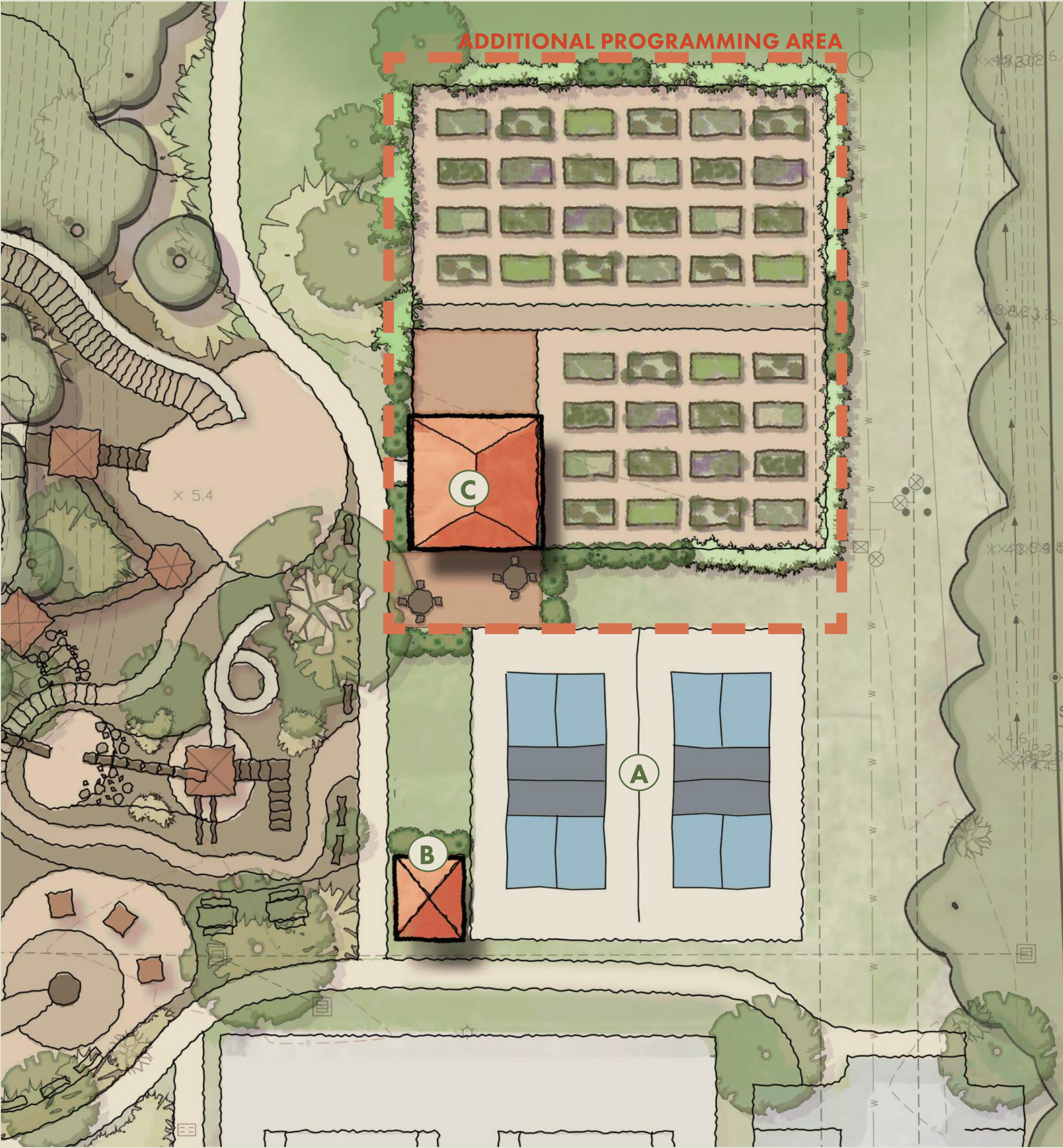


## PLAY FOR ALL AGES



## OPTION 2

- (A) TWO PICKLE BALL COURTS
- (B) SHADED STRUCTURE TO SERVE SPORTS COURTS AND PLAY AREAS
- (C) FENCED IN DOG PARK



### J. MARSHALL STITH PARK MASTER PLAN

SULLIVAN'S ISLAND, SC

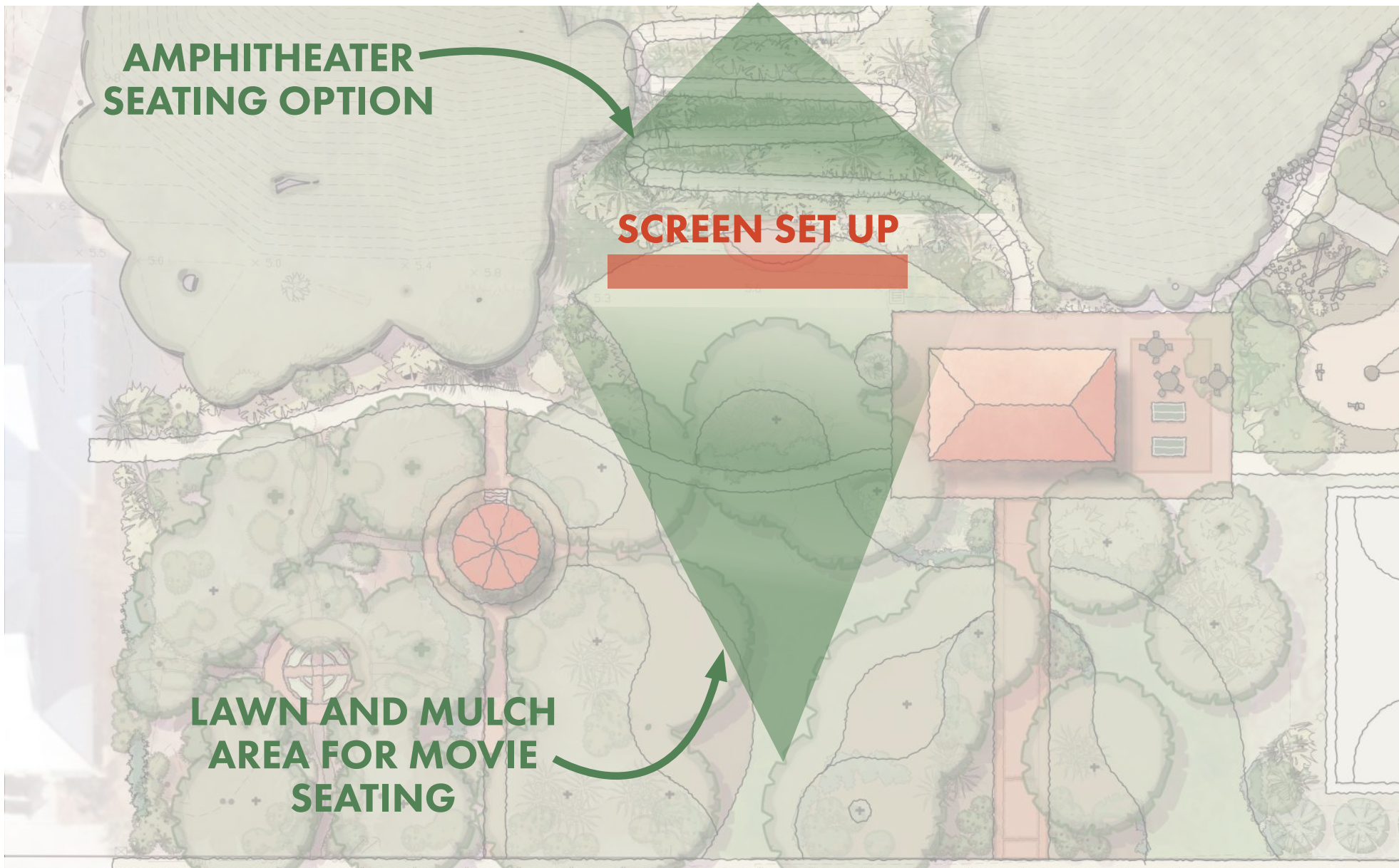
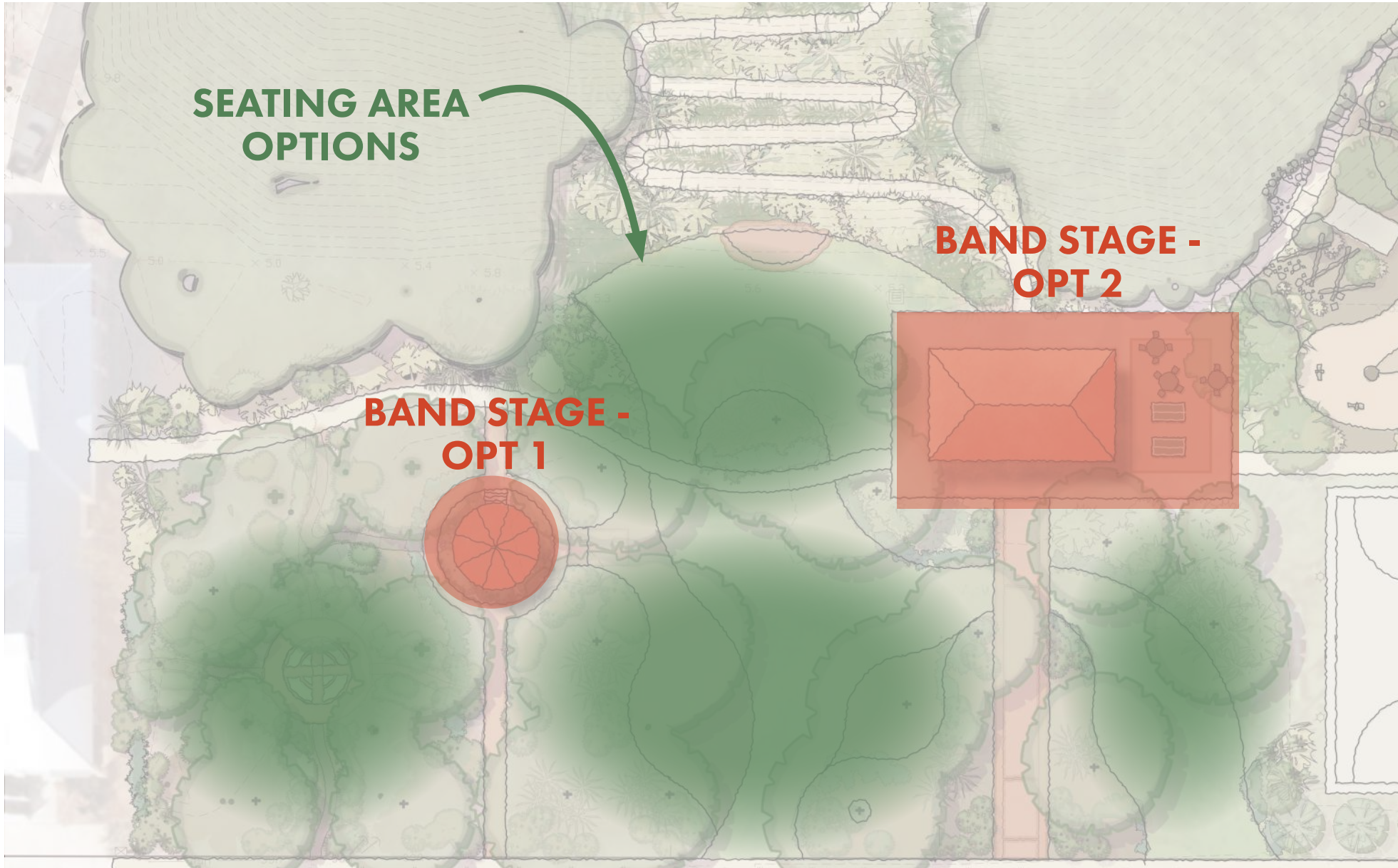
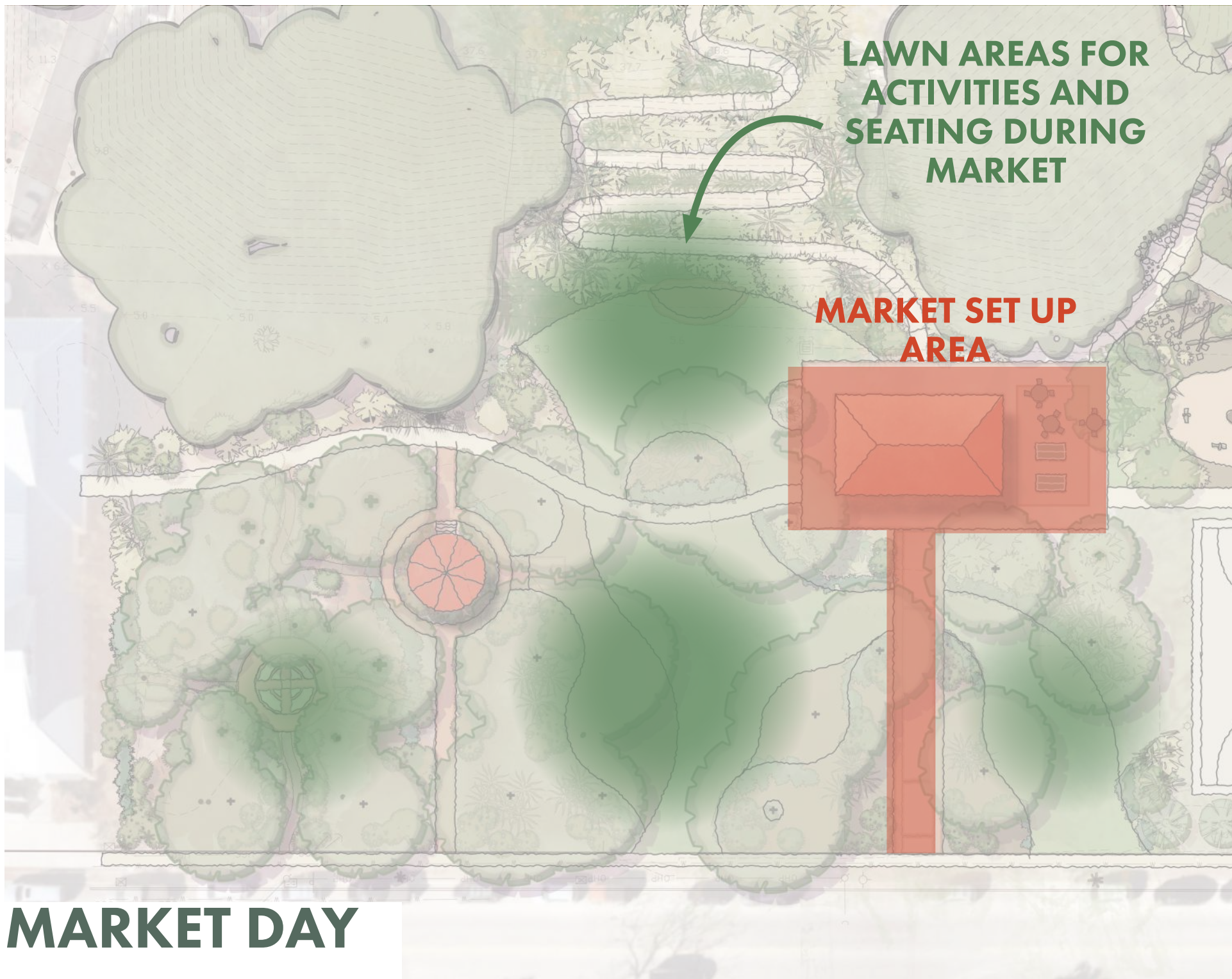
OCTOBER 2023



This map illustrates a general plan of the development which is for discussion purposes only, does not constitute a contract, and is subject to change and revision without prior written notice to the holder. Dimensions, boundaries, and position locations are for illustrative purposes only and are subject to an accurate survey and property description.



GROVE



J. MARSHALL STITH PARK MASTER PLAN

SULLIVAN'S ISLAND, SC

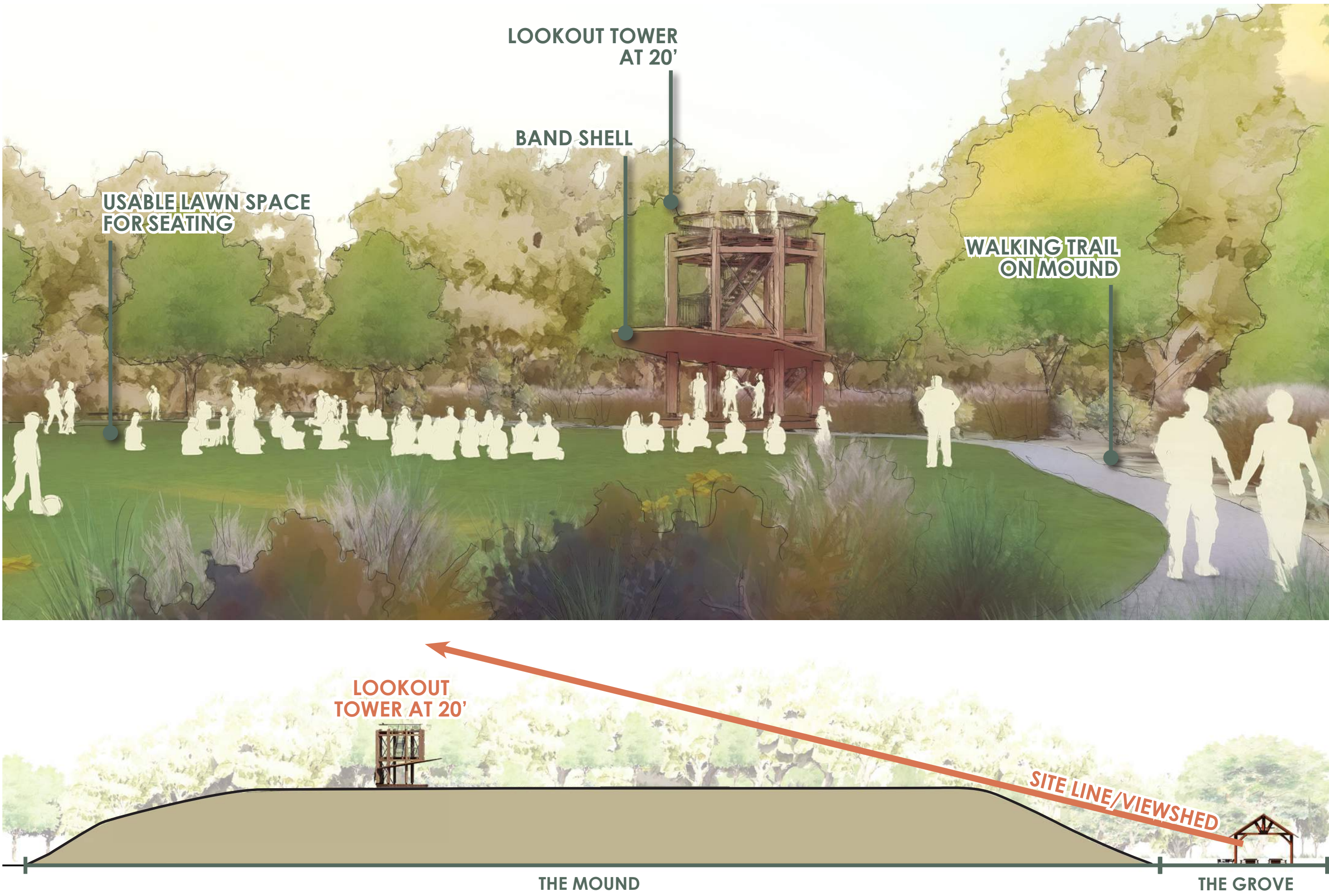
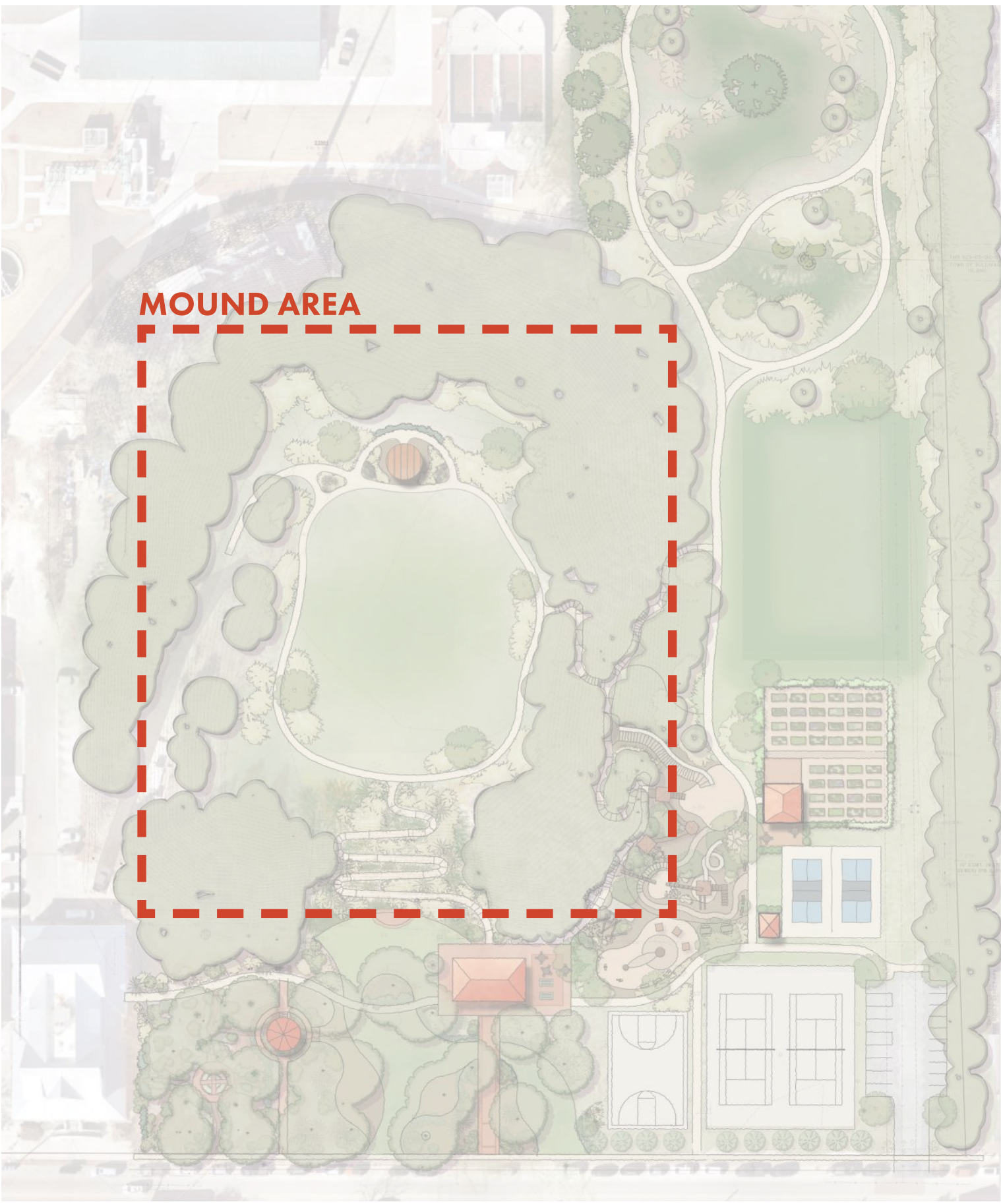
OCTOBER 2023



This map illustrates a general plan of the development which is for discussion purposes only, does not constitute a contract, and is subject to change and revision without prior written notice to the holder. Dimensions, boundaries, and position locations are for illustrative purposes only and are subject to an accurate survey and property description.



# MOUND



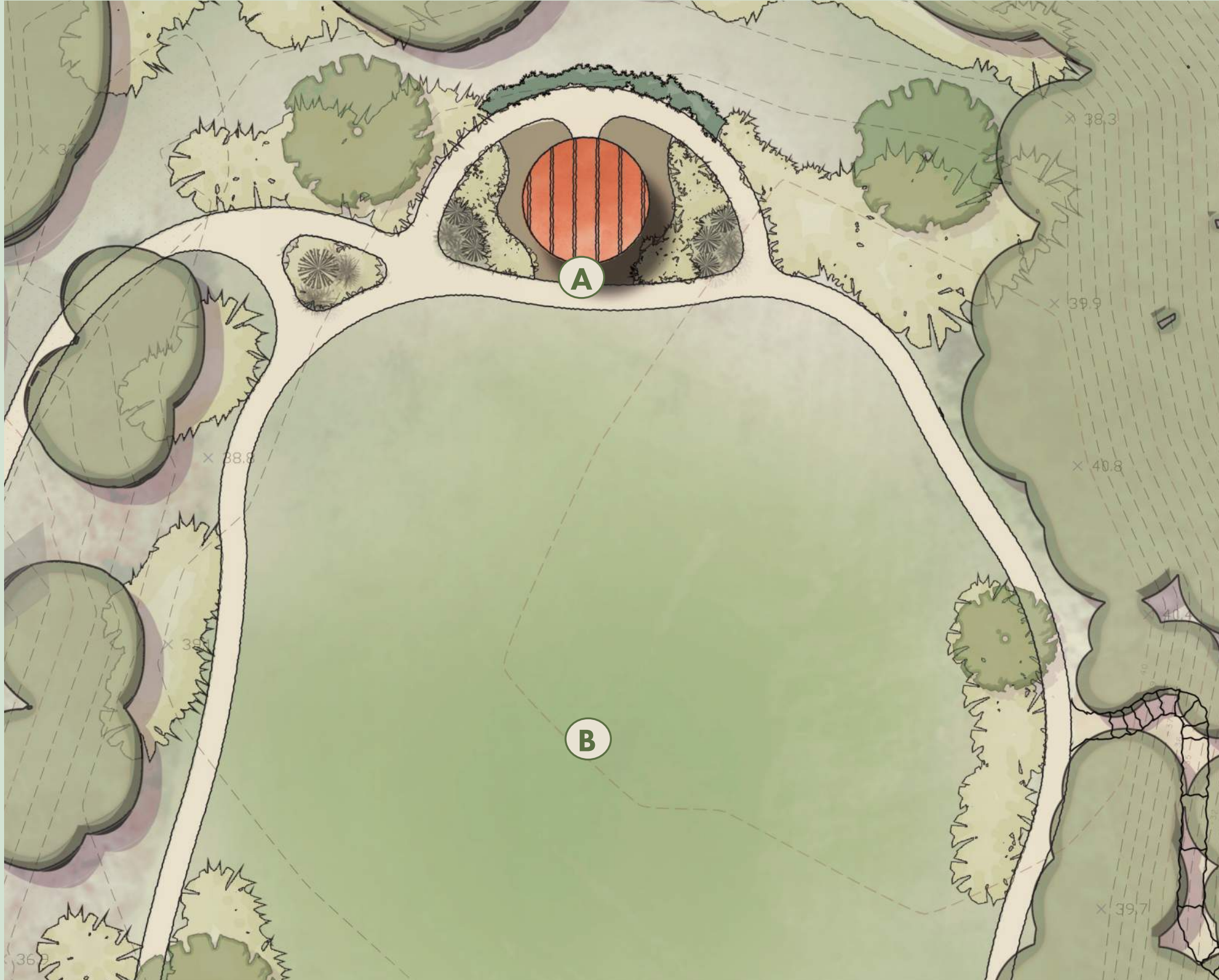
## OPTION 1 - MOUND ON THE MOUND

- A MOUND - 20 FEET TALL AT PEAK
- B WALKING PATH AT 5 TO 1 SLOPE MAX
- C STEPS THAT BLEND IN WITH NATURE
- D LAWN FOR SEATING



## OPTION 2 - BANDSHELL ON THE MOUND

- A BANDSHELL
- B OPEN LAWN FOR SEATING



## OPTION 3 - BANDSHELL ON THE MOUND WITH LOOKOUT TOWER



### J. MARSHALL STITH PARK MASTER PLAN

SULLIVAN'S ISLAND, SC

OCTOBER 2023



This map illustrates a general plan of the development which is for discussion purposes only, does not constitute a contract, and is subject to change and revision without prior written notice to the holder. Dimensions, boundaries, and position locations are for illustrative purposes only and are subject to an accurate survey and property description.



