

## Meeting #2 Public Comments

**Project:** Town of Sullivan's Island – Stith Park Playground / T&H J-30388.0000

**Date:** October 26, 2023

**Location:** Town of Sullivan's Island

**Attended By:** Town of Sullivan's Island, John Winters (T&H), Sam Mizell (T&H)

---

### Card 1

- No community garden needed.
- Need 4 pickleball courts, not 2 – put in garden.
- Golf cart parking great, can you do more?
- Water fountain? (drinking)
- Dog run or park would be great.
- Love the mound proposal.
- Additional pickleball first, then smaller dog park.
- Water for tennis and pickleball players.
- Lighted courts.

### Card 2

- Love the lookout tower with Option 1.

### Card 3

- Soccer fields!

### Card 4

- Community garden already existing! Messy looking and would require maintenance. Keep it in its current location. Farmer's market not feasible. Hard to find vendors. Turns into craft market instead of fresh food.

### Card 5

- Leave space to slide down the mound!

### Card 6

- Need minimum of 4 pickleball courts.
- Dog run.

### Card 7

## Meeting #2 Public Comments

- Is the tennis wall remaining or being relocated? It gets used quite a bit (gentlemen out there now) and that is really the only way to practice tennis without taking up a court – and I don't even play tennis. Thanks!

### Card 8

- Refillable water machine – refill water bottles.
- Slide on mound – embankment slide – dug into mound.
- Space for more community events.
- Terraced seating.
- Utilize the mound.
- Keep bamboo forest.
- Sunshade or trees covering playground.
- Climbing wall.

### Card 9

- Need sunshades over playgrounds.
- Garden center will require major maintenance, replace with fruit tree orchard or low maintenance green space.
- Refillable water station.

### Card 10

- Concerns:
  - Are we/SI prepared to draw more people to the Island? Do we really need all of this?
  - Security/safety concerns – we are now drawing people back and up.

### Card 11

- The mound is a wonderful and unique part of our Island. Kids have enjoyed sliding down the mound since the (almost) beginning. I think making the mound useful for all ages to enjoy would be awesome. Comfortable walking areas, slides, and a nice area to enjoy the views. Please keep as much green on the mound as possible, as I know you will.

### Card 12

- I love the walking paths in the back going to the dock. I like them around the mound so we can utilize it. Is it for people to use them (paths around the mound) in the summer? I would but would a lot of people.
- Love the open space on the mound if that's where "movie night" would take place or space friends and families can utilize it and enjoy the views.

### Card 13

- Can we please add water stations to refill water and new water fountains?

## Meeting #2 Public Comments

### Card 14

- I would like to see 4 pickleball courts and less "additional programming" area.
- I think movie night and music in the grove are good ideas and realistically I think many will use it (families/friends).

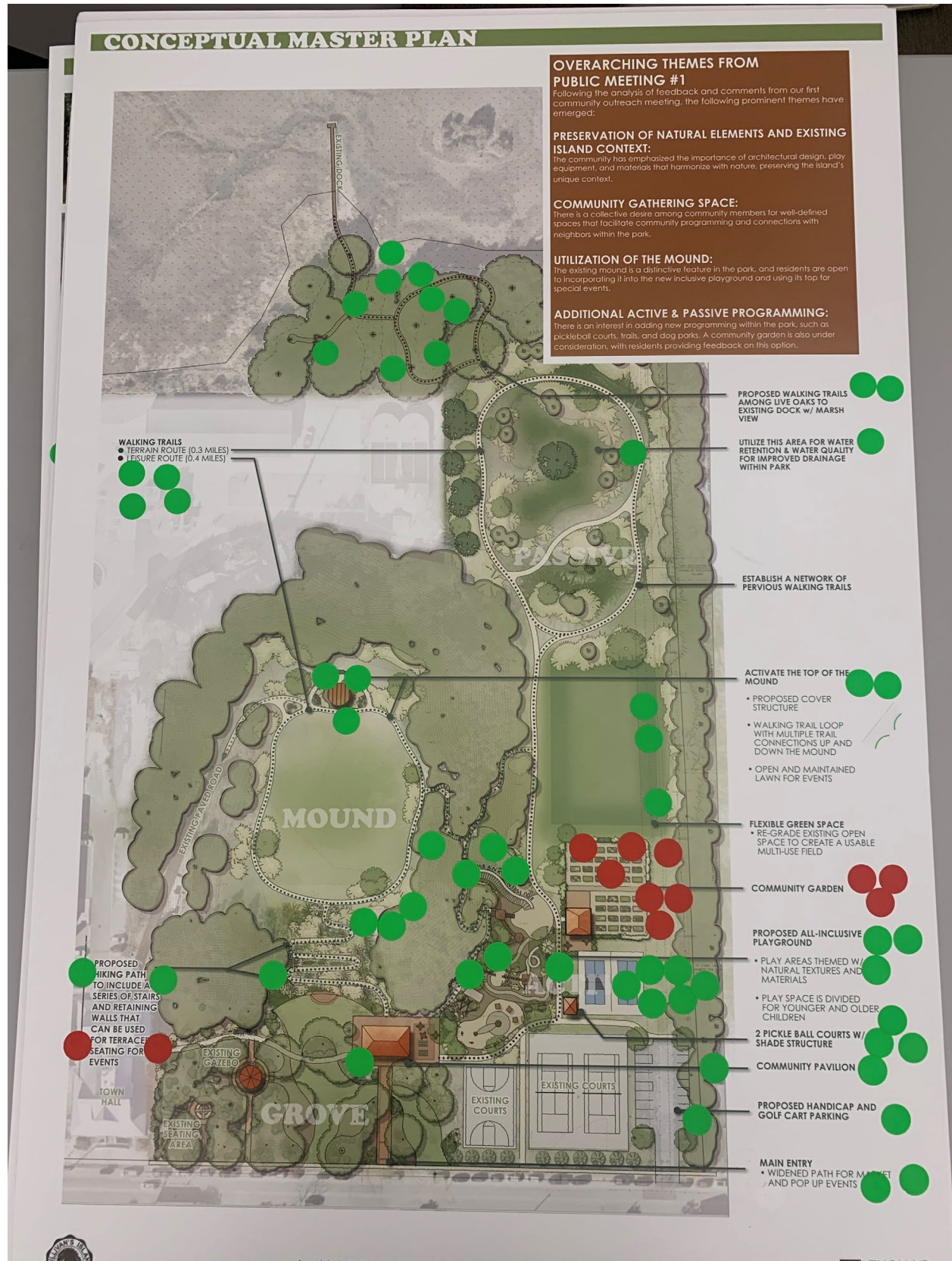
### Card 15

- Preserve the open field space on the east side of the mound from playground to marsh.
- No retention pond or \_\_\_\_\_ pond breaking up this space. A running/walking track around the \_\_\_\_\_ is good. Landscape and path leading from park field edge to the dock that is not now accessible.
- Preserve 1/3 of the face of the mound as is to go up and down on foot/cardboard.
- 2/3 could be some stairs, plateau, slide, etc.
- Like movie/band performances but no amphitheater. People bring chairs and blankets to sit for July 4<sup>th</sup>.
- Like space for farmers market.

### Card 16

- Much improved from first attempt – thanks for listening.
- I don't want to block visitors but also don't want to draw them here. Too many big improvements to the mound will be a huge draw – could add us to more "must see" lists. I want to see the mound cleaned up, sandspurs controlled, erosion control, flood control at base, but don't add a big slide on the mound – natural or not.
- Don't need a dog park! Lots of space for dogs to run in yards and on beach – again – more draw for off island.
- Keep large playground area – kids need to be the focus – keep a field to run and play – open space.
- No junky community garden – never looks good – we have yards on SI!
- Pickleball, sure – just prioritize the kids! (Mine are grown but spent so many hours there from birth and on).

## Meeting #2 Public Comments



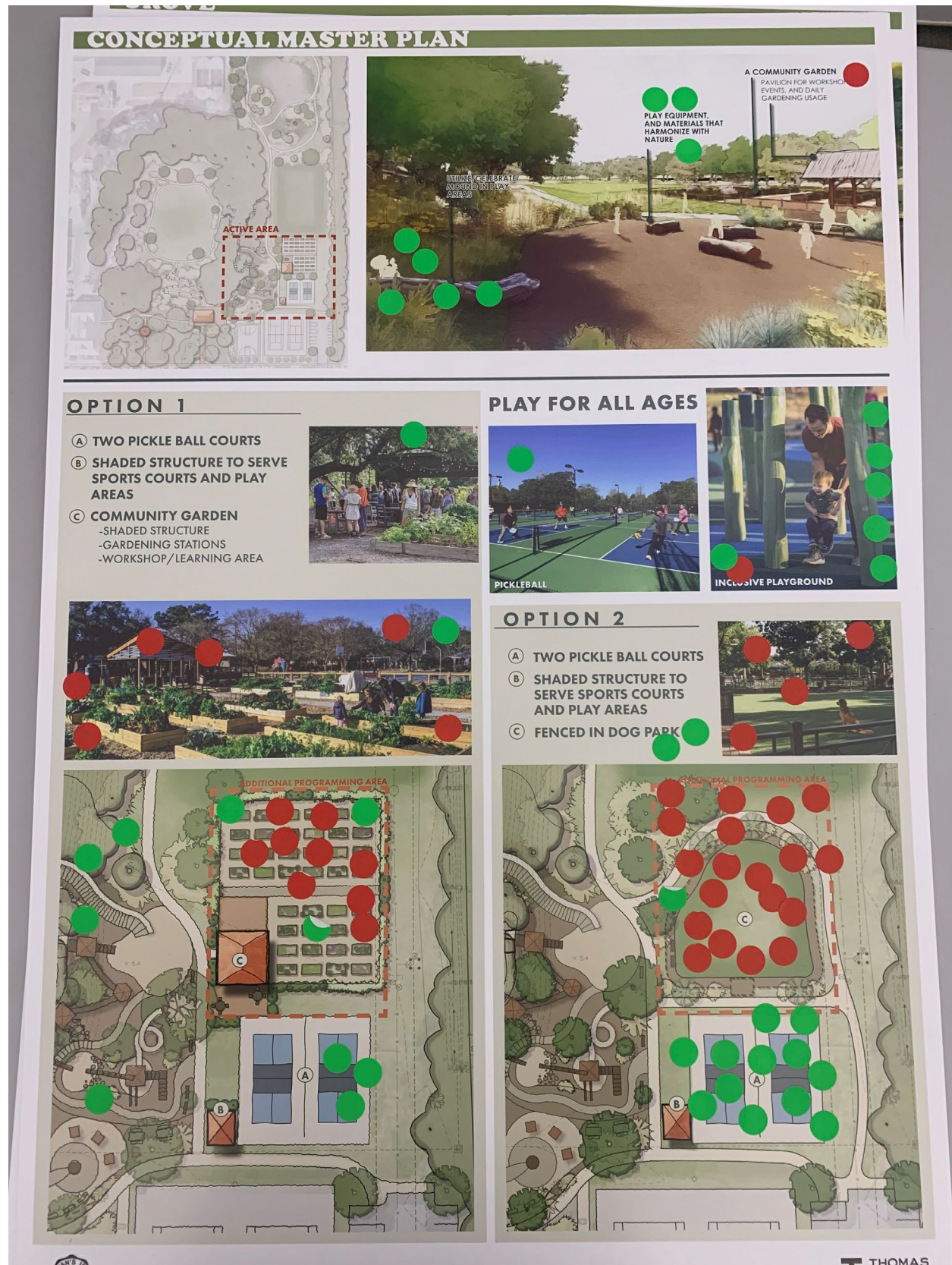


## Meeting #2 Public Comments



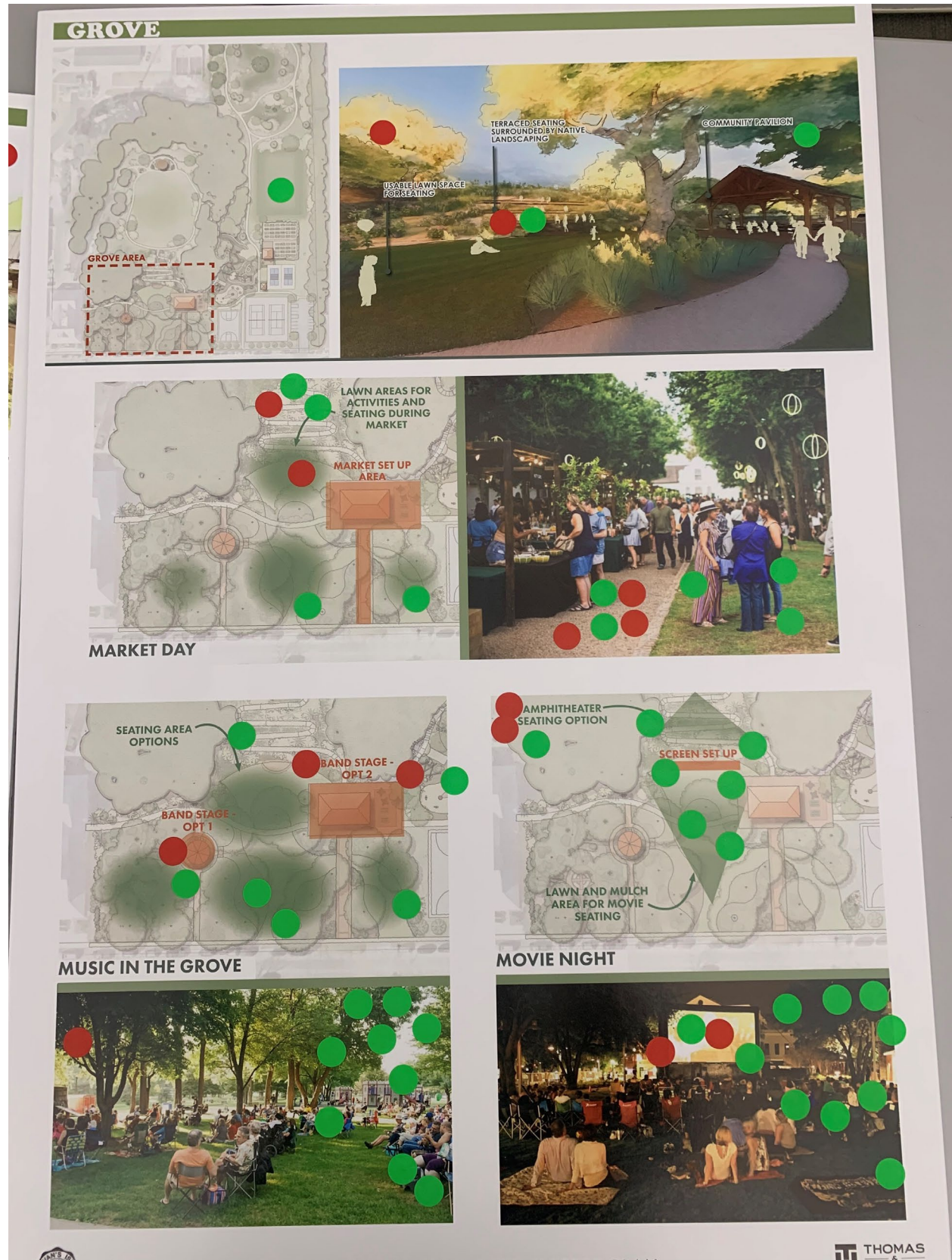


## Meeting #2 Public Comments





## Meeting #2 Public Comments



## **Meeting #2 Public Comments**