

Town of Sullivan's Island
Public Facilities Committee Minutes
Fire Station Training Room
August 5, 2015
8:30 a.m.

The Public Facilities Committee met on August 5, 2015 at 8:30 a.m., all Freedom of Information Act requirements being met. In attendance were Committee members Bachman Smith (Chair), and Chauncey Clark; Administrator Andy Benke, Fire Chief Anthony Stith, Police Chief Danny Howard, Zoning Administrator Joe Henderson, Town Clerk Ellen Miller, and Sullivan's Island Elementary School Principal Susan King. In the audience were Councilmember Rita Langley and resident Manda Poletti.

Chair Smith called the meeting to order at 8:35, and stated the purpose of the meeting was to discuss bicycle access to Sullivan's Island Elementary School, specifically from the western end of the Island. This was previously discussed at the August 3, 2015 Council Workshop. Chauncey Clark presented maps to help explain possible options. An option needs to be chosen for implementation before school begins on August 17, 2015.

Three main options suggested:

1. The Flag Street access. (Attachment 1) It is a long-term option, as it may require surveying and clearing; and reviewing the school lease, easements, right-of- ways, plats, and legal issues. Police Chief Howard noted that only children living on Flag and Thee Streets would benefit because students not on these streets would still be moving against traffic.
2. The I'on Avenue access diagram shows different possibilities: possible one-way street; possible sidewalk; possible dual-lane entry. (Attachment 2) The sidewalk option is a long-range possibility. The one-way street option would involve DOT, barricades and extra manpower.

Susan King stated she wanted to continue to look at Flag Street and the I'on sidewalk; however she does not like the one-way street suggestion. The confusion of a one-way street to students and parents may not help the safety issue.

She then suggested the school, along with the Police Department, conduct a bicycle safety class before school starts to communicate whatever traffic plan is chosen. Everyone agreed that the education component is the main safety factor. To eliminate the danger of that particular section of I'on Avenue, the plan should be publicized to faculty, students, and the Town, as well as the crossing guard. Susan King offered a suggestion for the bicyclists to go through the little

street in front of Poe Library; however, because vehicular traffic starts at Station 18-1/2, utilizing any access into the library would still have students moving against the traffic.

3. The Middle Street route. (Attachment 3) It is using Middle Street sidewalk and/or what is not shown on the map - using Central as bicycle access for even students on I'on and Atlantic. Last year vehicles turned at Station 19; however, during the first week of school the que line of cars started backing up, and it was changed to Station 18-1/2 Street. With cars turning at Station 18-1/2, the bicycle crossing moved to Station 18 which can be a dangerous intersection.

The use of a double queue line within the school property was discussed, and that decision will be at the discretion of Susan King. Also, the plan will be to change dismissal so the bicyclists and walkers leave last, instead of a little earlier than the car-riders.

Bachman Smith summarized the meeting: It is agreed that we will reroute vehicular traffic to turn down Station 19 instead of Station 18-1/2 to access the school; a map will be created with the route that directs walkers and bicyclists on the ocean side of Middle Street up to Station 18-1/2 to cross at Station 18-1/2 to access the sidewalk on Middle Street. The route will continue to Station 20-1/2 where the students will cross to access the school. Also, Principal King will educate the students and cross guard when crossing Station 20-1/2 to only cross on the fire station side of Middle, and then cross back over Middle on the post office side of Station 20-1/2. School staff will be available at the crosswalk from the post office across I'on Avenue.

Also:

- Administrator Benke will contact SCDOT regarding painting crosswalk at Station 18-1/2. If they are unavailable before August 17th, perhaps private vendor could paint.
- Administrator Benke will have crosswalk painted at Station 20-1/2 from post office sidewalk across I'on Avenue. (This was erroneously painted in another area and will be corrected).
- Wheel stops will be placed in front of sidewalk near new fence to provide a boundary between drivers' parking cars and bicyclists/pedestrians.

This temporary plan may address the problem, and no further action would be required.

It was noted that an additional crossing guard is not available in the immediate future if needed for any option, unless there is a procedure for an emergency request. Charleston County School System requests crossing guards through the Charleston County Sheriff's Office, and the requests are approved in January for the budget cycle.

Administrator Benke noted that if Middle Street does become the preferred route for pedestrians and cyclists, perhaps a sidewalk on the ocean side of Middle Street could be considered.

Motion was made by Bachman Smith, seconded by Chauncey Clark to adjourn at 9:30 a.m., carried unanimously.

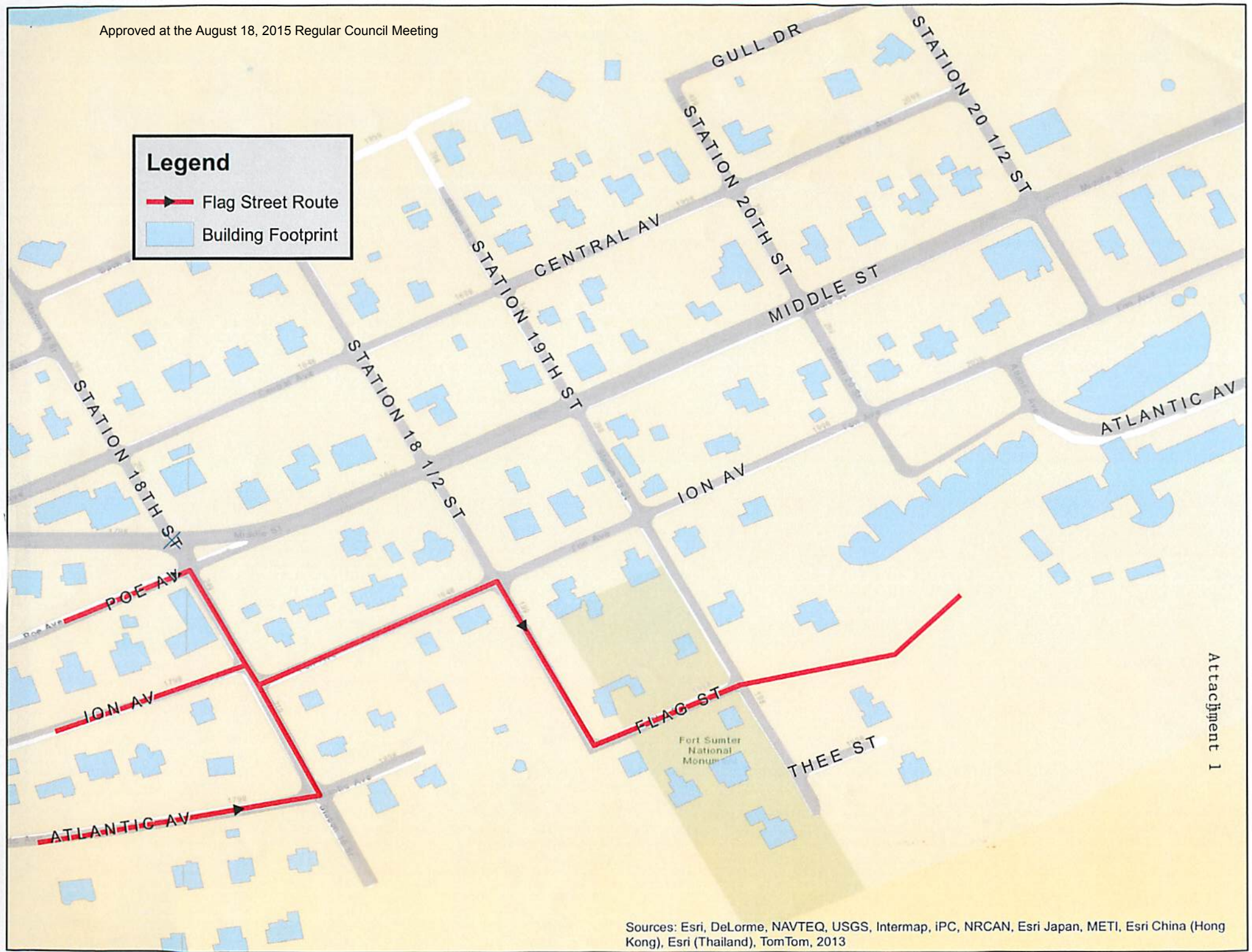
Respectfully submitted,

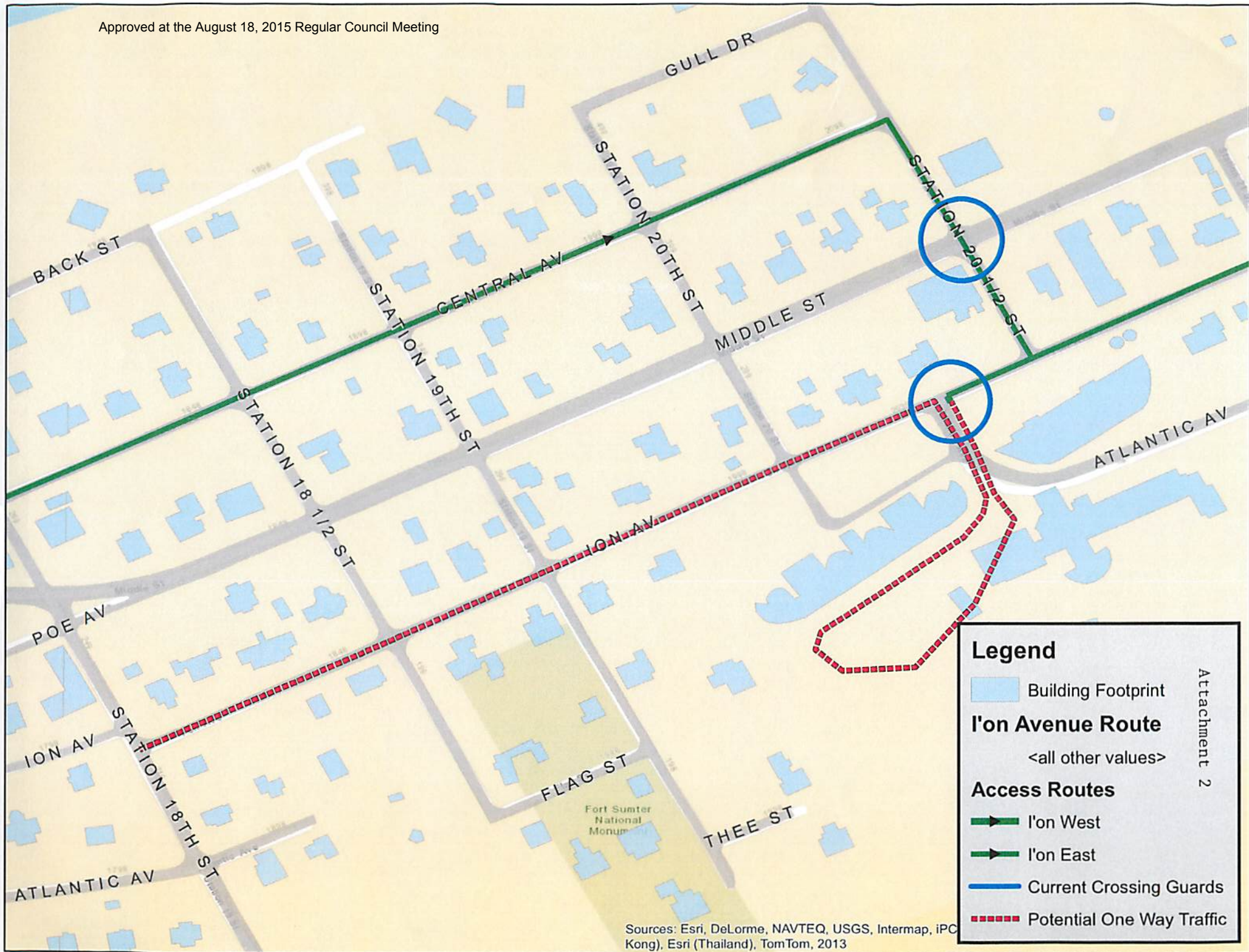


Ellen Miller

Legend

- ▶ Flag Street Route
- Building Footprint





Legend

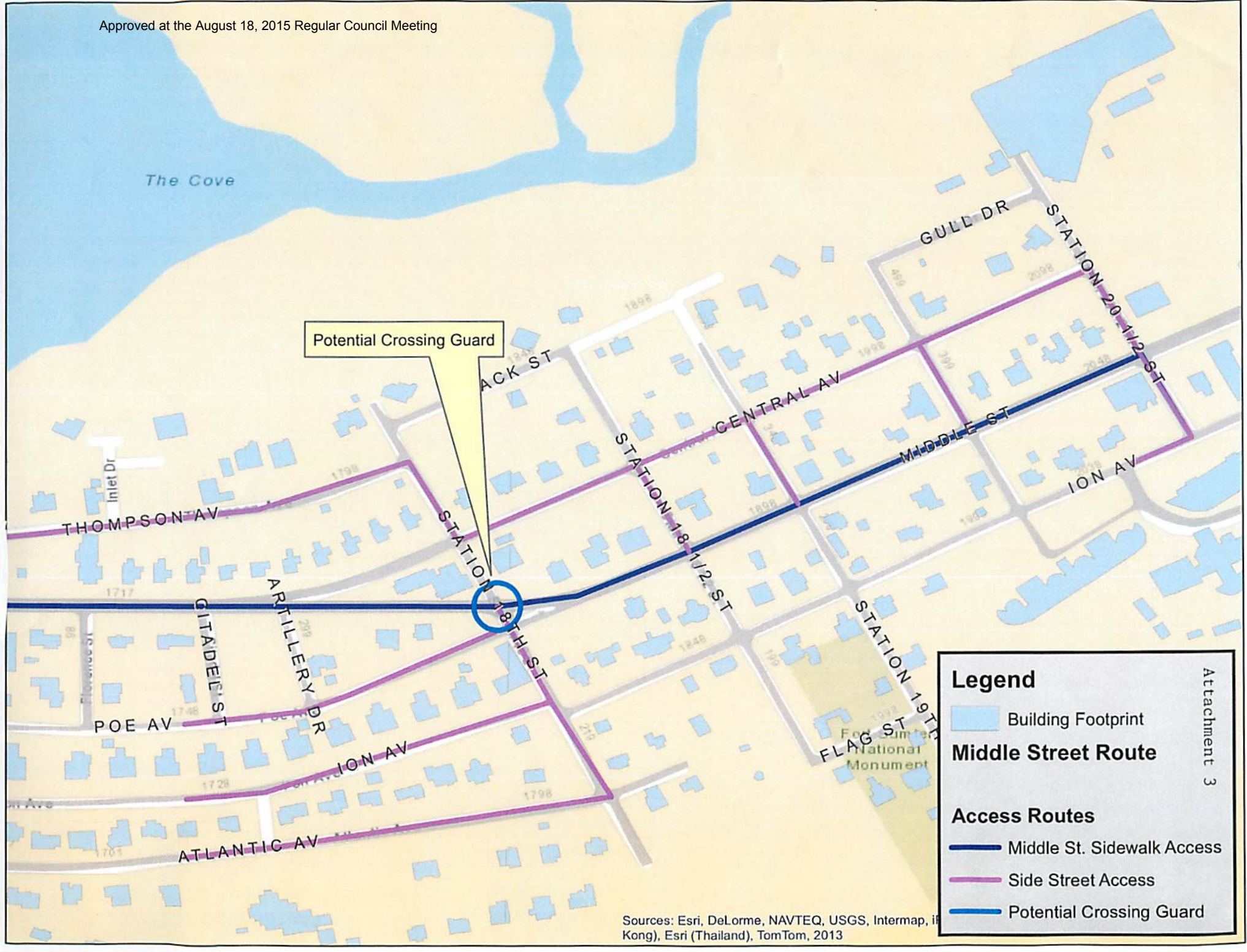
- Building Footprint
- I'on Avenue Route**
<all other values>
- Access Routes**
 - I'on West
 - I'on East
 - Current Crossing Guards
 - Potential One Way Traffic

Attachment 2

Sources: Esri, DeLorme, NAVTEQ, USGS, Intermap, iPC (Kong), Esri (Thailand), TomTom, 2013

The Cove

Potential Crossing Guard



Legend

- Building Footprint
- Middle Street Route**
- Access Routes**
 - Middle St. Sidewalk Access
 - Side Street Access
 - Potential Crossing Guard

Attachment 3

Sources: Esri, DeLorme, NAVTEQ, USGS, Intermap, iFong, Esri (Thailand), TomTom, 2013