



DEPARTMENT OF THE ARMY
CHARLESTON DISTRICT, CORPS OF ENGINEERS
69A HAGOOD AVENUE
CHARLESTON, SOUTH CAROLINA 29403-5107

May 6, 2021

Regulatory Division

Mr. Andy Benke
Town of Sullivan's Island
PO Box 427
Sullivan's Island, SC 29482

Dear Mr. Benke:

This is in response to your request for a Delineation Concurrence (SAC-2021-00391), received in our office on March 24, 2021, for a 238 acre site located seaward of homes behind the critical line within the Town of Sullivan's Island, Charleston County, South Carolina (Latitude: 32.7555°, Longitude: -79.8499°).

Based on a review of the information you submitted, the delineated boundaries depicted on the map titled WETLANDS EXHIBIT – PART 1 - 3 SULLIVAN'S ISLAND ACCRETED LANDS CHARLESTON COUNTY, SC and dated March 22, 2021, are a reasonable representation of the aquatic resources located onsite.

This information is sufficient for planning and permitting purposes with our office. Unless otherwise requested, no further correspondence will be forthcoming regarding this request.

In all future correspondence, please refer to file number SAC-2021-00391. A copy of this letter is forwarded to State and/or Federal agencies for their information. If you have any questions, please contact Shawn Boone, Project Manager, at (843) 329-8158, or by email at Shawn.A.Boone@usace.army.mil.

Sincerely,

Shawn Boone

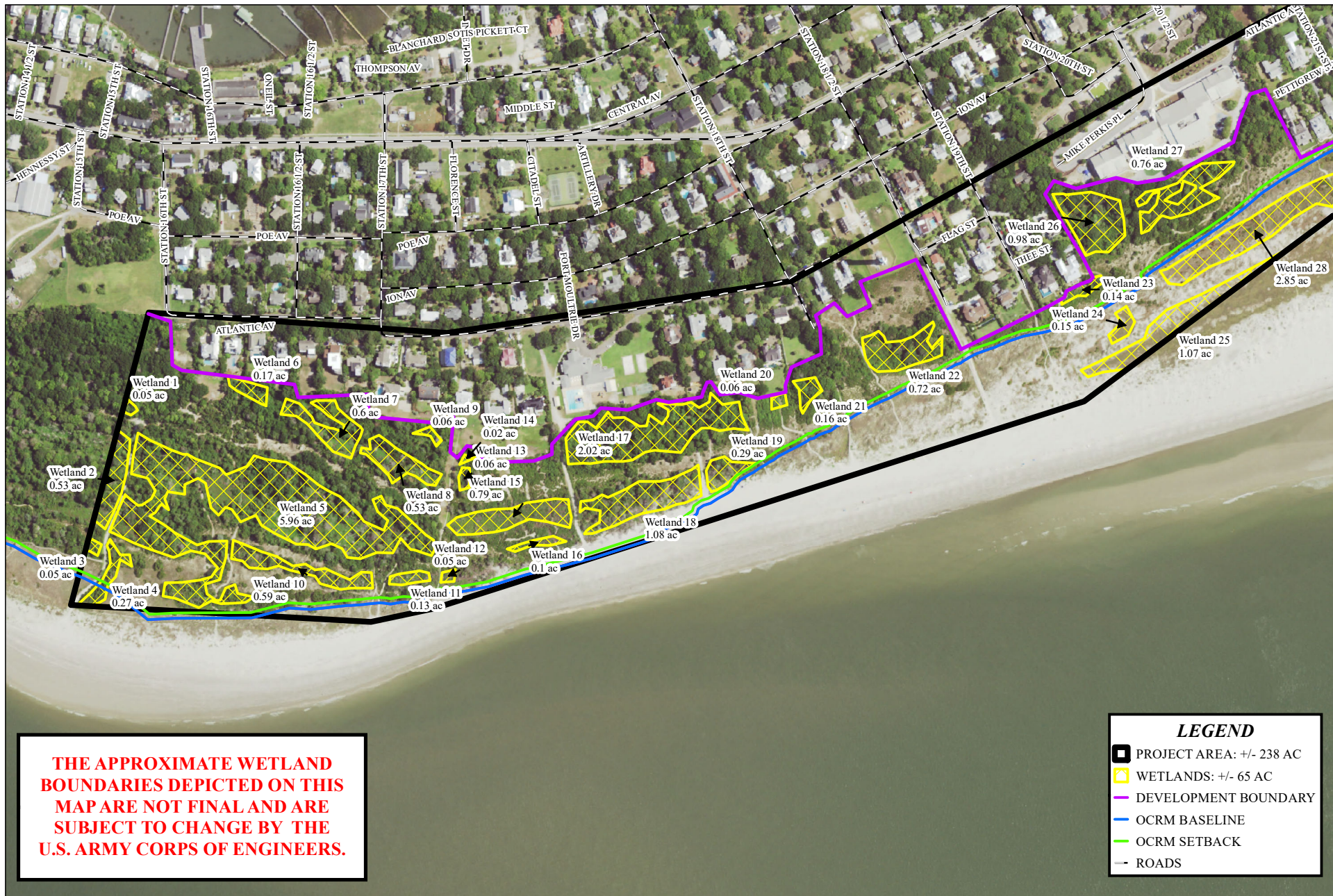
Shawn Boone
Project Manager

Enclosures:
WETLANDS EXHIBIT- PART 1-3 SULLIVAN'S ISLAND ACCRETED LANDS CHARLESTON COUNTY, SC

Copies Furnished:

SC DHEC - Bureau of Water
2600 Bull Street
Columbia, South Carolina 29201
WQCWetlands@dhec.sc.gov

SC DHEC - OCRM
1362 McMillan Avenue, Suite 400
North Charleston, South Carolina 29405
OCRMPermitting@dhec.sc.gov



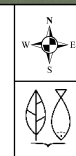
EXTERNAL SOURCES: NAIP 2019 TRUE COLOR AERIAL, U.S. CENSUS ROADS

Created By: Stephen Bennett
Date Created: March 19, 2021
Copyright 2021 Sabine & Waters, Inc.
R:\cusa\dr\thomas & hutton\sullivan's island\mapping\usa\approx_wet1.mxd

Sabine & Waters, Inc.
Environmental Land Management Consultants
P.O. Box 1072 Summerville, SC 29484
843.871.5383 (phone) 843.871.2050 (fax)
<http://www.sabine.net>

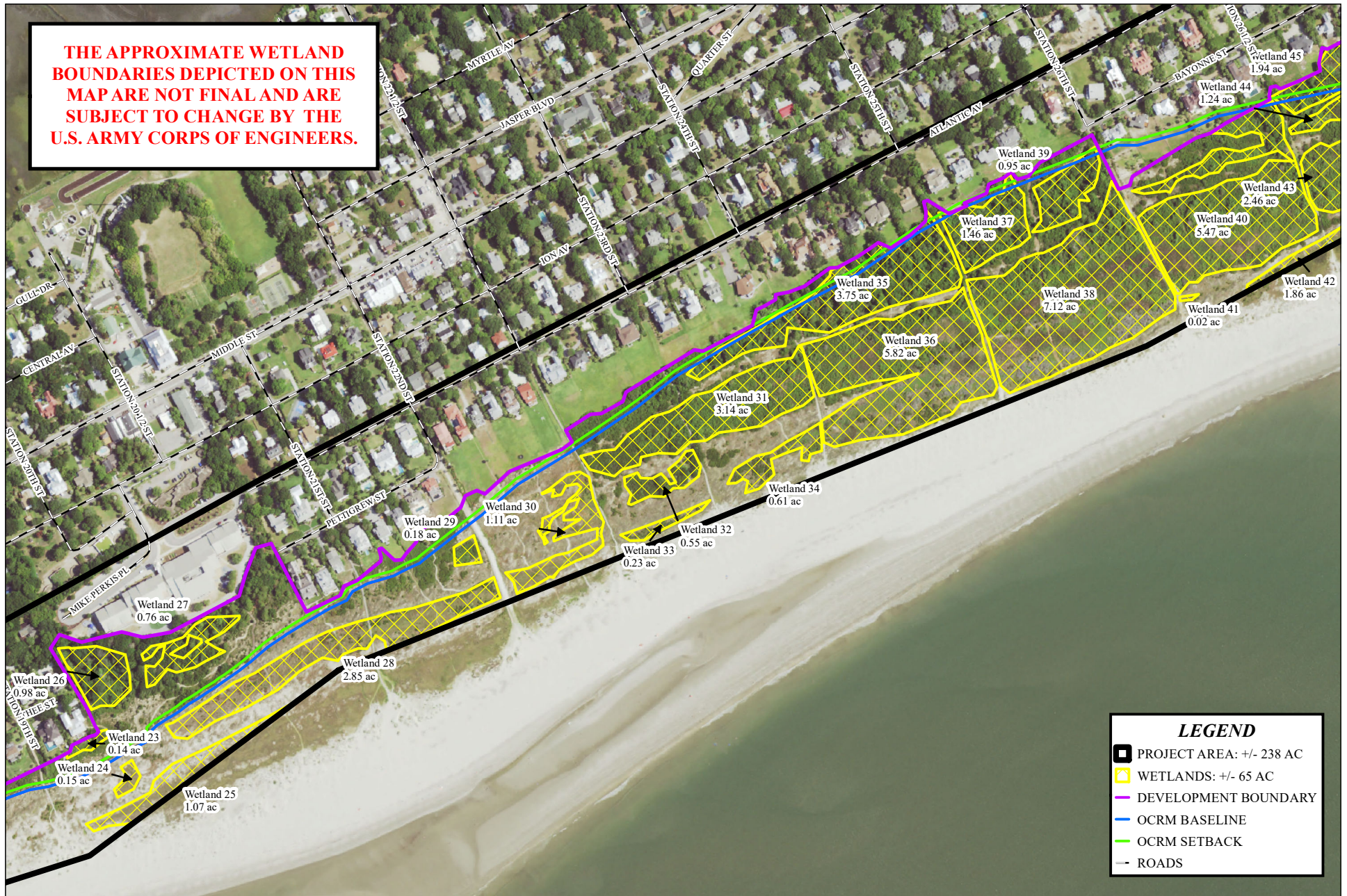
Disclaimer: This map is a graphic representation of data obtained from various sources. All efforts have been made to warrant the accuracy of this map. However, Sabine & Waters, Inc. disclaims all responsibility and liability for the use of this map.

REVISED: 3/30/2021



NOTES

**THE APPROXIMATE WETLAND
BOUNDARIES DEPICTED ON THIS
MAP ARE NOT FINAL AND ARE
SUBJECT TO CHANGE BY THE
U.S. ARMY CORPS OF ENGINEERS.**



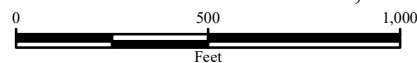
EXTERNAL SOURCES: NAIP 2019 TRUE COLOR AERIAL, U.S. CENSUS ROADS

Created By: Stephen Bennett
Date Created: March 30, 2021
Copyright 2021 Sabine & Waters, Inc.
R:\cusa\dl\thomas & hutton\sullivan's
island\mapping\usace\wet_exhibit2.mxd
Sabine & Waters, Inc.
Environmental Land Management Consultants
P.O. Box 1072 Summerville, SC 29484
843.871.5383 (phone) 843.871.2050 (fax)
<http://www.sabine.net>

Disclaimer: This map is a graphic representation of data obtained from various sources. All efforts have been made to warrant the accuracy of this map. However, Sabine & Waters, Inc. disclaims all responsibility and liability for the use of this map.

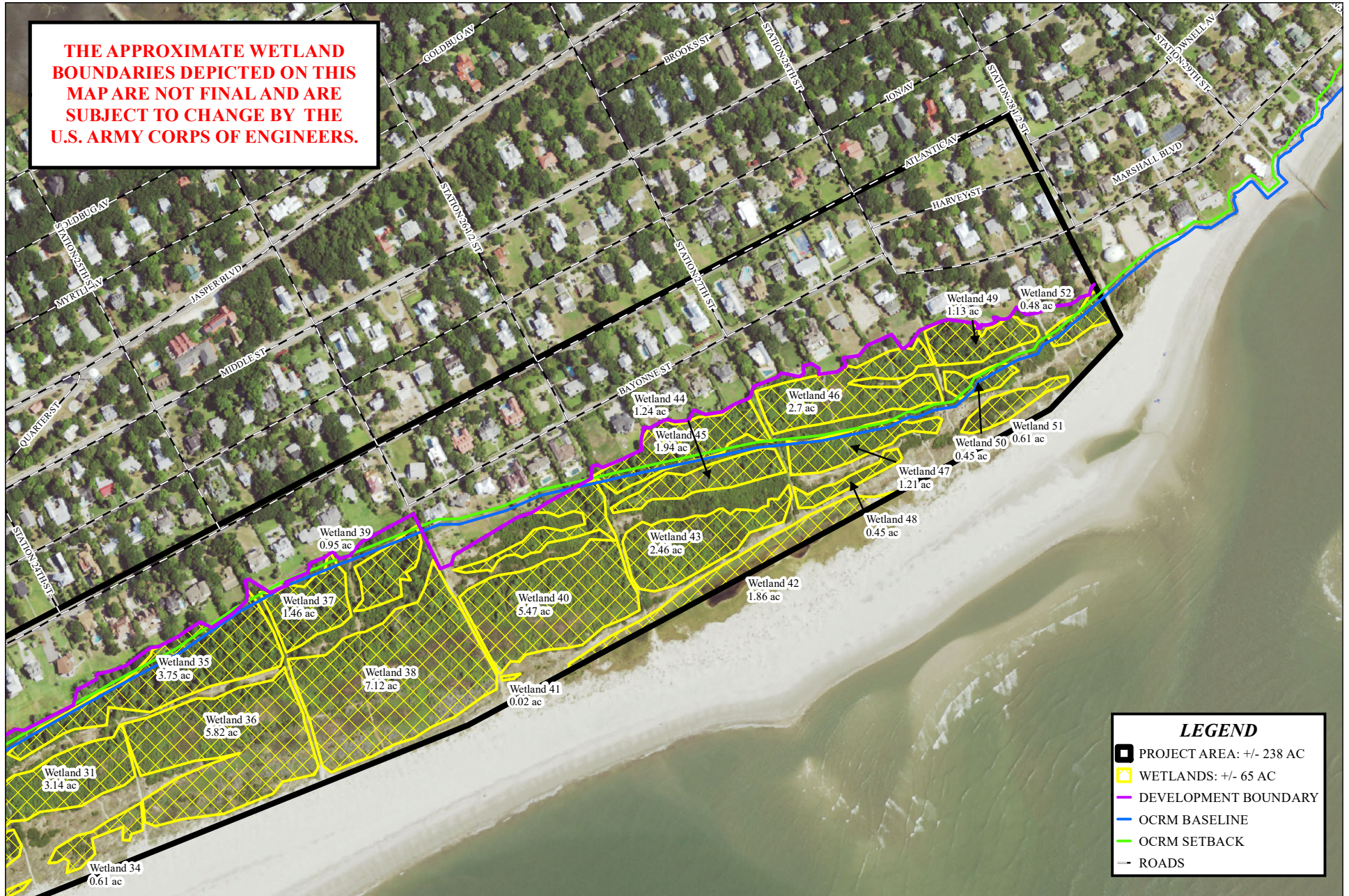
REVISED: 3/30/2021

WETLANDS EXHIBIT - PART 2 SULLIVAN'S ISLAND ACCRETED LANDS CHARLESTON COUNTY, SC



NOTES

**THE APPROXIMATE WETLAND
BOUNDARIES DEPICTED ON THIS
MAP ARE NOT FINAL AND ARE
SUBJECT TO CHANGE BY THE
U.S. ARMY CORPS OF ENGINEERS.**



LEGEND

- PROJECT AREA: +/- 238 AC
- WETLANDS: +/- 65 AC
- DEVELOPMENT BOUNDARY
- OCR M BASELINE
- OCR M SETBACK
- ROADS

EXTERNAL SOURCES: NAIP 2019 TRUE COLOR AERIAL, U.S. CENSUS ROADS

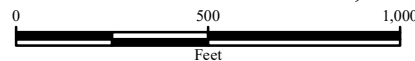
Created By: Stephen Bennett
Date Created: March 30, 2021
Copyright 2021 Sabine & Waters, Inc.
R:\cadd\thomas & hutton\sullivan's island\mapping\usace\wet_exhibit3.mxd

Sabine & Waters, Inc.
Environmental Land Management Consultants
P.O. Box 1072 Summerville, SC 29484
843.871.5383 (phone) 843.871.2050 (fax)
<http://www.sabine.net>

Disclaimer: This map is a graphic representation of data obtained from various sources. All efforts have been made to warrant the accuracy of this map. However, Sabine & Waters, Inc. disclaims all responsibility and liability for the use of this map.

REVISED: 3/30/2021

**WETLANDS EXHIBIT - PART 3
SULLIVAN'S ISLAND ACCRETED LANDS
CHARLESTON COUNTY, SC**



NOTES